

Converting Colors

YIQ(198.0740, 23.5190, 8.7910)

Have a look what the booklet for
YIQ(198.0740, 23.5190, 8.7910)
contains.

YIQ(198.0740, 23.5190, 8.7910)	3
<i>Conversions</i>	4
<i>Details</i>	6
<i>Harmonies</i>	12
<i>Previews</i>	24
<i>Color Blindness Simulation</i>	28
<i>CSS Examples</i>	31

Color

**YIQ(198.0740, 23.5190,
8.7910)**

Conversions

Conversions Part 1

Format	Color
Hex	E2BABB
RGB	226, 186, 187
RGB Percent	89%, 73%, 73%
CMY	0.1136, 0.2706, 0.2666
CMYK	0.00, 0.18, 0.17, 0.11
HSL	358°, 41%, 81%
HSV	358°, 18%, 89%
XYZ	57.8992, 54.8723, 54.5668
YIQ	198.0740, 23.5190, 8.7910

Conversions

Conversions Part 2

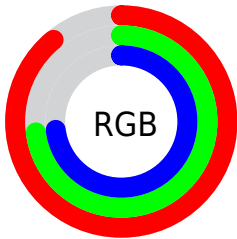
Format	Color
R _Y B	226, 186, 187
Decimal	14858939
CIE Lab	78.97, 14.51, 4.88
CIE LCh	79, 15.306, 18.574
Yxy	54.8723, 0.3460, 0.3279
Android (android.graphics.Color)	4293049019 (0xFFE2BABB)
YUV	198.0740, -5.4595, 24.4911
Hunter-Lab	74.0758, 9.8866, 8.1781

Details

The YIQ color $198.0740, 23.5190, 8.7910$ is a light color, and the websafe version is hex FFCCCC . A complement of this color would be $213.9260, -23.5190, -8.7910$, and the grayscale version is $198.0000, -0.0000, 0.0000$.

A 20% lighter version of the original color is $246.0010, 7.4270, 3.0670$, and $144.1770, 21.7310, 8.1550$ is the 20% darker color. If you saturate the color by 10%, you get $182.0650, 36.9060, 13.9780$, and if you desaturate by 10%, it is $214.0830, 10.1320, 3.6040$.

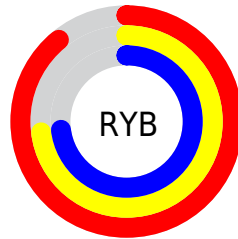
Distribution



Red (89%)

Green (73%)

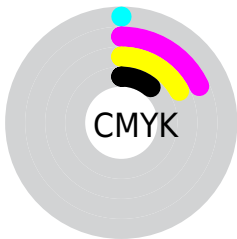
Blue (73%)



Red (89%)

Yellow (73%)

Blue (73%)

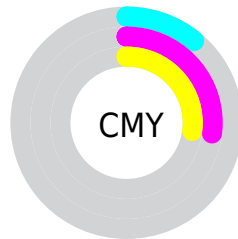


Cyan (0%)

Magenta (18%)

Yellow (17%)

Black (11%)



Cyan (11%)


Magenta (27%)


Yellow (27%)

Brightness & Saturation Gradients


These gradients show how the YIQ color 198.0740, 23.5190, 8.7910 changes by changing the brightness by 10 percent. The first figure shows a shift by +10% for each color and the second figure -10%.


Similar to the brightness gradients but the following saturation gradients show a change of the YIQ color 198.0740, 23.5190, 8.7910 by changing the saturation by 10% instead.


 198.0740, 23.5190,
8.7910


 198.0740, 23.5190,
8.7910


255.0000, -0.0000,
-0.0000


 170.7750, 22.9230,
8.5790


 246.0010, 7.4270,
3.0670

 144.1770, 21.7310,
8.1550

 117.9920, 20.8140,
8.2540

 93.2800, 19.9430,
7.5190

 69.6820, 18.7510,
7.0950

 47.1980, 17.2380,
6.9820

 25.6000, 16.0460,

6.5580

■ 6.5780, 13.1120,
4.6640

■ 0.0000, 0.0000,
0.0000

■ 198.0740, 23.5190,
8.7910

■ 198.0740, 23.5190,
8.7910

■ 182.0650, 36.9060,
13.9780

■ 214.0830, 10.1320,
3.6040

■ 166.6430, 50.0180,
18.6420

■ 229.5050, -2.9800,
-1.0600

■ 150.6340, 63.4050,
23.8290

■ 245.5140,
-16.3670, -6.2470

■ 135.2120, 76.5170,
28.4930

■ 246.3290,
-17.2840, -6.1480

■ 119.2030, 89.9040,
33.6800

■ 103.1940,
103.2910, 38.8670

■ 87.7720, 116.4030,
43.5310

■ 71.7630, 129.7900,
48.7180

■ 68.2580, 132.7700,
49.7780

Harmonies

Analogous

The Analogous color harmony consists of three colors that are next to each other on the color wheel.



198.2890, 15.7240, 12.3960



198.0740, 23.5190, 8.7910



196.9830, 25.0330, 3.3770

Triad

The Triadic color harmony groups three colors that are evenly spaced from another and form a triangle on the color wheel.



198.0740, 23.5190, 8.7910



192.1700, -3.8950, -12.0150



193.6740, -22.3290, 2.6870

Complementary

The Complementary color scheme is a pair of colors which are on the opposite of each other on the color wheel.



198.0740, 23.5190, 8.7910



213.9260, -23.5190, -8.7910

Split Complementary

Split-complementary colors differ from the complementary color scheme. The scheme consists of three colors, the original color and two neighbors of the complement color.



191.6360, -28.3340, -4.1260



198.0740, 23.5190, 8.7910



191.2270, -17.2370, -12.5090

Square

The Square scheme is like the rectangle color scheme, but the four colors are evenly spaced on the color wheel.



198.0740, 23.5190, 8.7910



193.8080, 8.9880, -8.7080



190.5450, -26.8200, -9.5400



196.2950, -10.7760, 8.0720

Rectangle

The Rectangle color scheme consists of four colors that form a rectangle on the color wheel.



198.0740, 23.5190, 8.7910



195.9670, 21.9620, -1.5420



190.5450, -26.8200, -9.5400



193.2390, -25.5380, 0.2700

Sweetspot

The Sweet Spot groups the original color and five complimentary colors.



198.0740, 23.5190, 8.7910



246.0010, 7.4270, 3.0670



202.2210, 10.4040, 20.7080



122.3920, 4.7680, 1.6960



0.0000, 0.0000, 0.0000



128.0000, -0.0000, -0.0000

Same Dimension

The Same Dimension uses a secret algorithm to generate beautiful new colors.



198.0740, 23.5190, 8.7910



217.3740, 31.5420, 12.0700



209.1130, 18.6150, -1.4570



104.2890, 6.5560, 2.3320



53.1940, 103.2910, 38.8670



14.4660, 28.2870, 10.4870

Inverse Universe

The Inverse Universe completely reimagines the original color for something new.



198.0740, 23.5190, 8.7910



217.3740, 31.5420, 12.0700



202.8870, -18.6150, 1.4570



104.2890, 6.5560, 2.3320



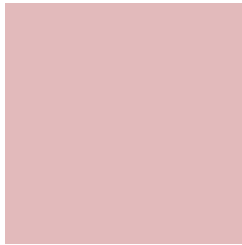
53.1940, 103.2910, 38.8670



14.4660, 28.2870, 10.4870

Previews

White Background



This preview shows how the YIQ color 198.0740, 23.5190, 8.7910 looks on a white background.

Color Contrast Check

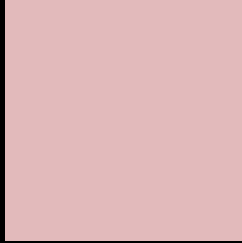
Large Text (above 18pt) WCAG AA × Fail

Any Text WCAG AA × Fail

Large Text (above 18pt) WCAG AAA × Fail

Any Text WCAG AAA × Fail

Black Background



This preview shows how the YIQ color 198.0740, 23.5190, 8.7910 looks on a black background.

Color Contrast Check

Large Text (above 18pt) WCAG AA ✓ Pass

Any Text WCAG AA ✓ Pass

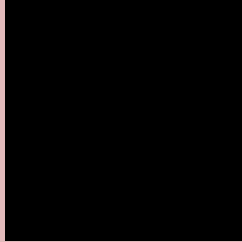
Large Text (above 18pt) WCAG AAA ✓ Pass

Any Text WCAG AAA ✓ Pass

If you want to check with other color combinations, try the [Color Contrast Checker](#).

YIQ 198.0740, 23.5190, 8.7910

Background



This preview shows how black text looks on a background with the YIQ color 198.0740, 23.5190, 8.7910.



This preview shows how white text looks on a background with the YIQ color 198.0740, 23.5190,

8.7910.

Color Blindness Simulation

Color vision deficiency is a very complex topic, and I could not describe the different causes any better than Wikipedia does, so if you want to learn more, you should check out their [article about color blindness](#).

Dichromacy



Original Color

198.0740, 23.5190, 8.7910

Protanopia

196.1530, 3.9430, 0.1270

Deuteranopia

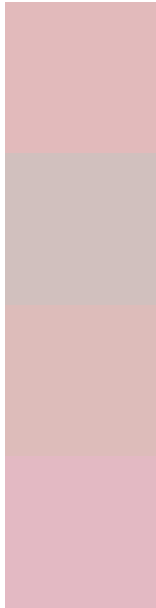
197.3290, 18.2470, 5.2150



Tritanopia

198.5670, 20.8130, 13.7810

Trichromacy



Original Color

198.0740, 23.5190, 8.7910

Protanomaly

196.8550, 10.7740, 2.9820

Deuteranomaly

197.6390, 20.3100, 6.3740

Tritanomaly

198.6980, 21.8220, 12.0140

Monochromacy



Original Color

198.0740, 23.5190, 8.7910

Achromatopsia

198.0000, -0.0000, 0.0000

Achromatomaly

198.1860, 8.3440, 2.9680

CSS Examples

Text

The CSS property to change the color of the text to YIQ 198.0740, 23.5190, 8.7910 is called "color". The color property can be set on classes, ids or directly on the HTML element.

This example shows how text in the color `rgb(226, 186, 187)` looks like.

```
.text, #text, p{  
    color:rgb(226, 186, 187)  
}
```

If you want to add a text shadow in that color use the text-shadow property, you can generate a text shadow directly with our [CSS Text Shadow Generator](#).

Here you see how black text with a 4 pixel rgb(226, 186, 187) colored shadow looks like.

```
.shadow{ text-shadow: 4px 4px 2px rgb(226, 186, 187) }
```

Border

The CSS property to change the border of an element to YIQ 198.0740, 23.5190, 8.7910 is called "border". The border property can be set on classes, ids or directly on the HTML element.

This example shows the color as border, it can be applied via the CSS property "border" or "border-color".

```
.border, #border, table{ border:4px solid rgb(226, 186, 187) }
```


If only the border color should be changed use the property `border-color`.

```
.border{ border-color:rgb(226, 186, 187) }
```

If you want to add a box shadow in that color use:

Here you see how a box with a 4 pixel `rgb(226, 186, 187)` colored shadow looks like.

```
.boxshadow{ -moz-box-shadow:4px 4px 4px  
4px rgb(226, 186, 187); -webkit-box-  
shadow:4px 4px 4px 4px rgb(226, 186, 187);  
box-shadow:4px 4px 4px 4px rgb(226, 186,  
187) }
```

Background

The CSS property to change the background color of an element to YIQ 198.0740, 23.5190, 8.7910 is called "background". The background property can be set on classes, ids or directly on the HTML element.

```
.background, #background, body{  
background: rgb(226, 186, 187) }
```

If only the background color should be changed can be used:

```
.background{ background-color: rgb(226,  
186, 187) }
```

This example shows the color as background, it is applied via the CSS property "background".

To optimize and compress your CSS code, you can use our [online CSS compressor and optimizer](#) based on csstidy. If you want to create a linear or radial gradient as background or border, check our [CSS Gradient Generator](#).

Hey! You found this booklet interesting? Support Converting Colors with the new Membership Option!

The pro membership hides all ads, plus gives you double the colors in the color bucket, and more awesome pro features!

[Learn more, Memberships starting at \\$2.50/m!](#)

**Follow me
on Twitter!**

@ConvertingColor