

Converting Colors

YIQ(199.3110, 9.4900, 4.2260)

Have a look what the booklet for
YIQ(199.3110, 9.4900, 4.2260)
contains.

YIQ(199.3110, 9.4900, 4.2260)	3
<i>Conversions</i>	4
<i>Details</i>	6
<i>Harmonies</i>	12
<i>Previews</i>	24
<i>Color Blindness Simulation</i>	28
<i>CSS Examples</i>	31

Color

**YIQ(199.3110, 9.4900,
4.2260)**

Conversions

Conversions Part 1

Format	Color
Hex	D3C2C4
RGB	211, 194, 196
RGB Percent	83%, 76%, 77%
CMY	0.1725, 0.2392, 0.2313
CMYK	0.00, 0.08, 0.07, 0.17
HSL	353°, 16%, 79%
HSV	353°, 8%, 83%
XYZ	56.1221, 56.4168, 60.1616
YIQ	199.3110, 9.4900, 4.2260

Conversions

Conversions Part 2

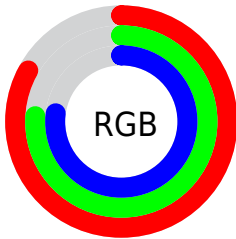
Format	Color
R _Y B	211, 194, 196
Decimal	13877956
CIE Lab	79.85, 6.32, 1.14
CIE LCh	80, 6.425, 10.255
Yxy	56.4168, 0.3250, 0.3267
Android (android.graphics.Color)	4292068036 (0xFFD3C2C4)
YUV	199.3110, -1.6323, 10.2513
Hunter-Lab	75.1111, 1.9285, 5.0884

Details

The YIQ color $199.3110, 9.4900, 4.2260$ is a light color, and the websafe version is hex `CCCCCC`. A complement of this color would be $205.6890, -9.4900, -4.2260$, and the grayscale version is $199.0000, -0.0000, 0.0000$.

A 20% lighter version of the original color is $251.8370, 2.0170, 1.9930$, and $145.0120, 8.8940, 4.0140$ is the 20% darker color. If you saturate the color by 10%, you get $184.8180, 21.3640, 9.3000$, and if you desaturate by 10%, it is $213.8040, -2.3840, -0.8480$.

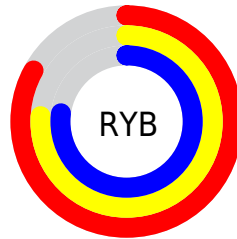
Distribution



Red (83%)

Green (76%)

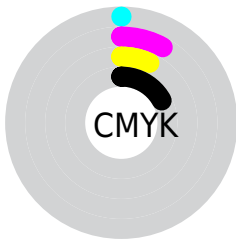
Blue (77%)



Red (83%)

Yellow (76%)

Blue (77%)

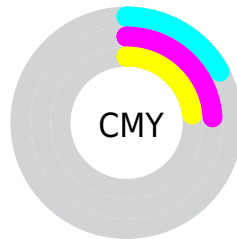


Cyan (0%)

Magenta (8%)

Yellow (7%)

Black (17%)



Cyan (17%)

Magenta (24%)

Yellow (23%)

Brightness & Saturation Gradients

These gradients show how the YIQ color 199.3110, 9.4900, 4.2260 changes by changing the brightness by 10 percent. The first figure shows a shift by +10% for each color and the second figure -10%.

Similar to the brightness gradients but the following saturation gradients show a change of the YIQ color 199.3110, 9.4900, 4.2260 by changing the saturation by 10% instead.

■ 199.3110, 9.4900,
4.2260

■ 199.3110, 9.4900,
4.2260

■ 255.0000, -0.0000,
-0.0000

■ 172.0120, 8.8940,
4.0140

■ 251.8370, 2.0170,
1.9930

■ 145.0120, 8.8940,
4.0140

■ 119.7130, 8.2980,
3.8020

■ 94.7130, 8.2980,
3.8020

■ 71.4140, 7.7020,
3.5900

■ 49.0010, 7.4270,
3.0670

■ 27.8160, 6.5100,

3.1660

■ 4.1860, 8.3440,
2.9680

■ 0.0000, 0.0000,
0.0000

■ 199.3110, 9.4900,
4.2260

■ 199.3110, 9.4900,
4.2260

■ 184.8180, 21.3640,
9.3000

■ 213.8040, -2.3840,
-0.8480

■ 170.4390, 32.9170,
14.6850

■ 228.1830,
-13.9370, -6.2330

■ 155.9460, 44.7910,
19.7590

■ 241.5020,
-25.2610, -10.2610

■ 141.5670, 56.3440,
25.1440

■ 241.8440,
-26.2240, -9.3280

■ 126.4870, 68.4930,
30.7410

■ 111.9940, 80.3670,
35.8150

■ 97.6150, 91.9200,
41.2000

■ 83.1220, 103.7940,
46.2740

■ 68.7430, 115.3470,
51.6590

Harmonies

Analogous

The Analogous color harmony consists of three colors that are next to each other on the color wheel.



199.0980, 5.7760, 5.4560



199.3110, 9.4900, 4.2260



199.2140, 11.1410, 1.8370

Triad

The Triadic color harmony groups three colors that are evenly spaced from another and form a triangle on the color wheel.



199.3110, 9.4900, 4.2260



196.9520, -0.0450, -4.6930



197.4380, -10.0410, 0.2550

Complementary

The Complementary color scheme is a pair of colors which are on the opposite of each other on the color wheel.



199.3110, 9.4900, 4.2260



205.6890, -9.4900, -4.2260

Split Complementary

Split-complementary colors differ from the complementary color scheme. The scheme consists of three colors, the original color and two neighbors of the complement color.



196.3730, -11.4160, -2.3600



199.3110, 9.4900, 4.2260



196.3150, -5.5010, -4.9330

Square

The Square scheme is like the rectangle color scheme, but the four colors are evenly spaced on the color wheel.



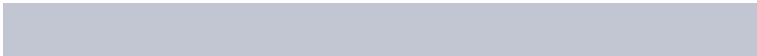
199.3110, 9.4900, 4.2260



197.5290, 5.6400, -3.0960



196.3900, -10.0860, -4.4380



198.1720, -6.2360, 2.8840

Rectangle

The Rectangle color scheme consists of four colors that form a rectangle on the color wheel.



199.3110, 9.4900, 4.2260



198.9750, 10.3160, 0.2680



196.3900, -10.0860, -4.4380



196.7260, -10.9120, -0.4800

Sweetspot

The Sweet Spot groups the original color and five complimentary colors.



199.3110, 9.4900, 4.2260



251.6090, 2.6590, 1.3710



200.4230, 3.4830, 8.4670



125.8970, 1.7880, 0.6360



0.0000, 0.0000, 0.0000



128.0000, -0.0000, -0.0000

Same Dimension

The Same Dimension uses a secret algorithm to generate beautiful new colors.



199.3110, 9.4900, 4.2260



237.8170, 13.9370, 6.2330



202.6050, 8.4820, 0.4660



97.4030, 6.2350, 2.6430



52.5120, 93.7080, 41.8360



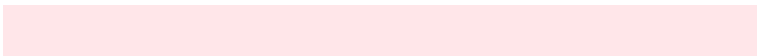
12.8290, 22.8310, 10.2470

Inverse Universe

The Inverse Universe completely reimagines the original color for something new.



199.3110, 9.4900, 4.2260



237.8170, 13.9370, 6.2330



202.3950, -8.4820, -0.4660



97.4030, 6.2350, 2.6430



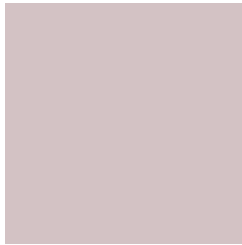
52.5120, 93.7080, 41.8360



12.8290, 22.8310, 10.2470

Previews

White Background



This preview shows how the YIQ color 199.3110, 9.4900, 4.2260 looks on a white background.

Color Contrast Check

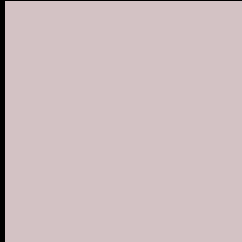
Large Text (above 18pt) WCAG AA × Fail

Any Text WCAG AA × Fail

Large Text (above 18pt) WCAG AAA × Fail

Any Text WCAG AAA × Fail

Black Background



This preview shows how the YIQ color 199.3110, 9.4900, 4.2260 looks on a black background.

Color Contrast Check

Large Text (above 18pt) WCAG AA ✓ Pass

Any Text WCAG AA ✓ Pass

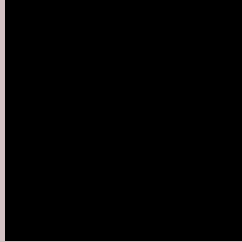
Large Text (above 18pt) WCAG AAA ✓ Pass

Any Text WCAG AAA ✓ Pass

If you want to check with other color combinations, try the [Color Contrast Checker](#).

YIQ 199.3110, 9.4900, 4.2260

Background



This preview shows how black text looks on a background with the YIQ color 199.3110, 9.4900, 4.2260.



This preview shows how white text looks on a background with the YIQ color 199.3110, 9.4900,

4.2260.

Color Blindness Simulation

Color vision deficiency is a very complex topic, and I could not describe the different causes any better than Wikipedia does, so if you want to learn more, you should check out their [article about color blindness](#).

Dichromacy



Original Color

199.3110, 9.4900, 4.2260

Protanopia

198.3100, 2.0630, 1.1590

Deuteranopia

200.2300, 14.2120, 6.7560



Tritanopia

199.9890, 7.7010, 9.1170

Trichromacy



Original Color

199.3110, 9.4900, 4.2260

Protanomaly

198.8050, 5.0430, 2.2190

Deuteranomaly

199.9200, 12.1490, 5.5970

Tritanomaly

199.8210, 8.1140, 7.1380

Monochromacy



Original Color

199.3110, 9.4900, 4.2260

Achromatopsia

199.0000, -0.0000, 0.0000

Achromatomaly

198.9080, 3.2550, 1.5830

CSS Examples

Text

The CSS property to change the color of the text to YIQ 199.3110, 9.4900, 4.2260 is called "color". The color property can be set on classes, ids or directly on the HTML element.

This example shows how text in the color `rgb(211, 194, 196)` looks like.

```
.text, #text, p{  
    color:rgb(211, 194, 196)  
}
```

If you want to add a text shadow in that color use the text-shadow property, you can generate a text shadow directly with our [CSS Text Shadow Generator](#).

Here you see how black text with a 4 pixel rgb(211, 194, 196) colored shadow looks like.

```
.shadow{ text-shadow: 4px 4px 2px rgb(211, 194, 196) }
```

Border

The CSS property to change the border of an element to YIQ 199.3110, 9.4900, 4.2260 is called "border". The border property can be set on classes, ids or directly on the HTML element.

This example shows the color as border, it can be applied via the CSS property "border" or "border-color".

```
.border, #border, table{ border:4px solid rgb(211, 194, 196) }
```


If only the border color should be changed use the property `border-color`.

```
.border{ border-color:rgb(211, 194, 196) }
```

If you want to add a box shadow in that color use:

Here you see how a box with a 4 pixel `rgb(211, 194, 196)` colored shadow looks like.

```
.boxshadow{ -moz-box-shadow:4px 4px 4px  
4px rgb(211, 194, 196); -webkit-box-  
shadow:4px 4px 4px 4px rgb(211, 194, 196);  
box-shadow:4px 4px 4px 4px rgb(211, 194,  
196) }
```

Background

The CSS property to change the background color of an element to YIQ 199.3110, 9.4900, 4.2260 is called "background". The background property can be set on classes, ids or directly on the HTML element.

```
.background, #background, body{  
background: rgb(211, 194, 196) }
```

If only the background color should be changed can be used:

```
.background{ background-color: rgb(211,  
194, 196) }
```

This example shows the color as background, it is applied via the CSS property "background".

To optimize and compress your CSS code, you can use our [online CSS compressor and optimizer](#) based on csstidy. If you want to create a linear or radial gradient as background or border, check our [CSS Gradient Generator](#).

Hey! You found this booklet interesting? Support Converting Colors with the new Membership Option!

The pro membership hides all ads, plus gives you double the colors in the color bucket, and more awesome pro features!

[Learn more, Memberships starting at \\$2.50/m!](#)

**Follow me
on Twitter!**

@ConvertingColor