

Converting Colors

YIQ(199.3240, 16.6430, 1.2430)

Have a look what the booklet for
YIQ(199.3240, 16.6430, 1.2430)
contains.

YIQ(199.3240, 16.6430, 1.2430)	3
<i>Conversions</i>	4
<i>Details</i>	6
<i>Harmonies</i>	12
<i>Previews</i>	24
<i>Color Blindness Simulation</i>	28
<i>CSS Examples</i>	31

Color

**YIQ(199.3240, 16.6430,
1.2430)**

Conversions

Conversions Part 1

Format	Color
Hex	D8C2B7
RGB	216, 194, 183
RGB Percent	85%, 76%, 72%
CMY	0.1529, 0.2392, 0.2823
CMYK	0.00, 0.10, 0.15, 0.15
HSL	20°, 30%, 78%
HSV	20°, 15%, 85%
XYZ	56.1613, 56.5998, 52.7750
YIQ	199.3240, 16.6430, 1.2430

Conversions

Conversions Part 2

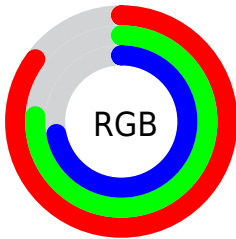
Format	Color
R _Y B	216, 200, 183
Decimal	14205623
CIE Lab	79.95, 5.97, 8.33
CIE LCh	80, 10.254, 54.369
Yxy	56.5998, 0.3393, 0.3419
Android (android.graphics.Color)	4292395703 (0xFFD8C2B7)
YUV	199.3240, -8.0477, 14.6249
Hunter-Lab	75.2329, 1.5926, 11.0718

Details

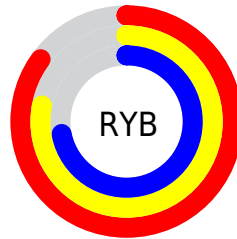
The YIQ color $199.3240, 16.6430, 1.2430$ is a light color, and the websafe version is hex `CCCCCC`. A complement of this color would be $199.6760, -16.6430, -1.2430$, and the grayscale version is $199.0000, -0.0000, 0.0000$.

A 20% lighter version of the original color is $250.2410, 6.5110, -2.3610$, and $145.1390, 15.7260, 1.3420$ is the 20% darker color. If you saturate the color by 10%, you get $188.5980, 27.5550, 1.7230$, and if you desaturate by 10%, it is $210.0500, 5.7310, 0.7630$.

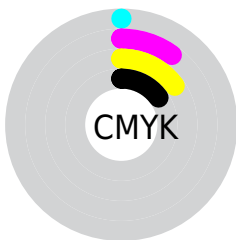
Distribution



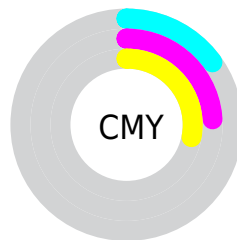
- Red (85%)
- Green (76%)
- Blue (72%)



- Red (85%)
- Yellow (78%)
- Blue (72%)



- Cyan (0%)
- Magenta (10%)
- Yellow (15%)
- Black (15%)



- Cyan (15%)
- Magenta (24%)
- Yellow (28%)

Brightness & Saturation Gradients


These gradients show how the YIQ color 199.3240, 16.6430, 1.2430 changes by changing the brightness by 10 percent. The first figure shows a shift by +10% for each color and the second figure -10%.


Similar to the brightness gradients but the following saturation gradients show a change of the YIQ color 199.3240, 16.6430, 1.2430 by changing the saturation by 10% instead.


 199.3240, 16.6430,
1.2430

 199.3240, 16.6430,
1.2430


255.0000, -0.0000,
-0.0000


 172.0250, 16.0470,
1.0310


 250.2410, 6.5110,
-2.3610

 145.1390, 15.7260,
1.3420

 119.8400, 15.1300,
1.1300

 94.6550, 14.2130,
1.2290

 71.0570, 13.0210,
0.8050

 48.7580, 12.4250,
0.5930

 27.4590, 11.8290,

0.3810

■ 4.1860, 8.3440,
2.9680

■ 0.0000, 0.0000,
0.0000

■ 199.3240, 16.6430,
1.2430

■ 199.3240, 16.6430,
1.2430

■ 188.5980, 27.5550,
1.7230

■ 210.0500, 5.7310,
0.7630

■ 177.3990, 38.4210,
3.0370

■ 221.2490, -5.1350,
-0.5510

■ 166.6730, 49.3330,
3.5170

■ 231.9750,
-16.0470, -1.0310

■ 155.4740, 60.1990,
4.8310

■ 241.5780,
-22.4190, -6.6990

■ 144.7480, 71.1110,
5.3110

■ 243.3390,
-23.2440, -8.2680

■ 134.0220, 82.0230,
5.7910

■ 122.8230, 92.8890,
7.1050

■ 112.0970,
103.8010, 7.5850

■ 106.8480,
108.9360, 8.1360

Harmonies

Analogous

The Analogous color harmony consists of three colors that are next to each other on the color wheel.



199.9590, 16.4130, 5.4130



199.3240, 16.6430, 1.2430



198.2370, 12.3340, -3.2660

Triad

The Triadic color harmony groups three colors that are evenly spaced from another and form a triangle on the color wheel.



199.3240, 16.6430, 1.2430



195.3140, -12.9280, -8.0000



198.8780, -5.2280, 6.6440

Complementary

The Complementary color scheme is a pair of colors which are on the opposite of each other on the color wheel.



199.3240, 16.6430, 1.2430



199.6760, -16.6430, -1.2430

Split Complementary

Split-complementary colors differ from the complementary color scheme. The scheme consists of three colors, the original color and two neighbors of the complement color.



197.7520, -13.8010, 2.3190



199.3240, 16.6430, 1.2430



195.5570, -17.9260, -5.5260

Square

The Square scheme is like the rectangle color scheme, but the four colors are evenly spaced on the color wheel.



199.3240, 16.6430, 1.2430



196.3920, -4.4000, -8.3680



196.0780, -17.8350, -1.6670



200.1950, 4.1250, 7.8450

Rectangle

The Rectangle color scheme consists of four colors that form a rectangle on the color wheel.



199.3240, 16.6430, 1.2430



197.4320, 7.2910, -5.4850



196.0780, -17.8350, -1.6670



198.3830, -8.2080, 5.5840

Sweetspot

The Sweet Spot groups the original color and five complimentary colors.



199.3240, 16.6430, 1.2430



248.2350, 6.6480, 0.6640



195.4890, 12.2850, 14.1490



123.5660, 4.2180, 0.6500



0.0000, 0.0000, 0.0000



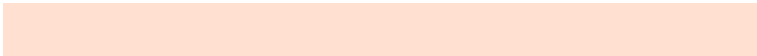
128.0000, -0.0000, -0.0000

Same Dimension

The Same Dimension uses a secret algorithm to generate beautiful new colors.



199.3240, 16.6430, 1.2430



231.5590, 23.2910, 1.9070



208.7160, 12.2430, -7.1250



101.6370, 5.4560, 0.2400



84.5880, 86.2410, 6.4410



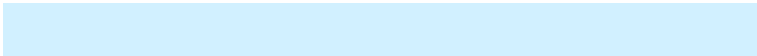
21.0750, 21.7780, 1.7940

Inverse Universe

The Inverse Universe completely reimagines the original color for something new.



199.6760, -16.6430, -1.2430



232.4410, -23.2910, -1.9070



190.2840, -12.2430, 7.1250



101.9500, -5.7310, -0.7630



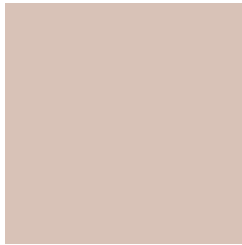
86.4120, -86.2410, -6.4410



21.9250, -21.7780, -1.7940

Previews

White Background



This preview shows how the YIQ color 199.3240, 16.6430, 1.2430 looks on a white background.

Color Contrast Check

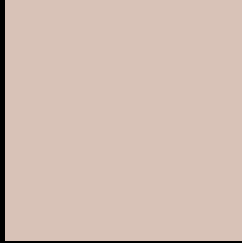
Large Text (above 18pt) WCAG AA × Fail

Any Text WCAG AA × Fail

Large Text (above 18pt) WCAG AAA × Fail

Any Text WCAG AAA × Fail

Black Background



This preview shows how the YIQ color 199.3240, 16.6430, 1.2430 looks on a black background.

Color Contrast Check

Large Text (above 18pt) WCAG AA ✓ Pass

Any Text WCAG AA ✓ Pass

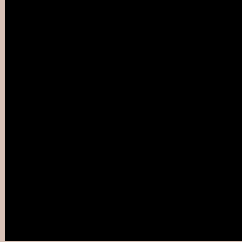
Large Text (above 18pt) WCAG AAA ✓ Pass

Any Text WCAG AAA ✓ Pass

If you want to check with other color combinations, try the [Color Contrast Checker](#).

YIQ 199.3240, 16.6430, 1.2430

Background



This preview shows how black text looks on a background with the YIQ color 199.3240, 16.6430, 1.2430.



This preview shows how white text looks on a background with the YIQ color 199.3240, 16.6430,

Color Blindness Simulation

Color vision deficiency is a very complex topic, and I could not describe the different causes any better than Wikipedia does, so if you want to learn more, you should check out their [article about color blindness](#).

Dichromacy



Original Color

199.3240, 16.6430, 1.2430

Protanopia

198.6110, 8.3450, -2.5590

Deuteranopia

199.7700, 21.3190, 4.6070



Tritanopia

201.0820, 11.8730, 10.6010

Trichromacy



Original Color

199.3240, 16.6430, 1.2430

Protanomaly

199.1060, 11.3250, -1.4990

Deuteranomaly

199.4600, 19.2560, 3.4480

Tritanomaly

200.4580, 13.5700, 7.3780

Monochromacy



Original Color

199.3240, 16.6430, 1.2430

Achromatopsia

199.0000, -0.0000, 0.0000

Achromatomaly

198.9360, 6.0520, 0.4520

CSS Examples

Text

The CSS property to change the color of the text to YIQ 199.3240, 16.6430, 1.2430 is called "color". The color property can be set on classes, ids or directly on the HTML element.

This example shows how text in the color `rgb(216, 194, 183)` looks like.

```
.text, #text, p{  
    color:rgb(216, 194, 183)  
}
```

If you want to add a text shadow in that color use the text-shadow property, you can generate a text shadow directly with our [CSS Text Shadow Generator](#).

Here you see how black text with a 4 pixel rgb(216, 194, 183) colored shadow looks like.

```
.shadow{ text-shadow: 4px 4px 2px rgb(216, 194, 183) }
```

Border

The CSS property to change the border of an element to YIQ 199.3240, 16.6430, 1.2430 is called "border". The border property can be set on classes, ids or directly on the HTML element.

This example shows the color as border, it can be applied via the CSS property "border" or "border-color".

```
.border, #border, table{ border:4px solid rgb(216, 194, 183) }
```


If only the border color should be changed use the property border-color.

```
.border{ border-color:rgb(216, 194, 183) }
```

If you want to add a box shadow in that color use:

Here you see how a box with a 4 pixel rgb(216, 194, 183) colored shadow looks like.

```
.boxshadow{ -moz-box-shadow:4px 4px 4px  
4px rgb(216, 194, 183); -webkit-box-  
shadow:4px 4px 4px 4px rgb(216, 194, 183);  
box-shadow:4px 4px 4px 4px rgb(216, 194,  
183) }
```

Background

The CSS property to change the background color of an element to YIQ 199.3240, 16.6430, 1.2430 is called "background". The background property can be set on classes, ids or directly on the HTML element.

```
.background, #background, body{  
background: rgb(216, 194, 183) }
```

If only the background color should be changed can be used:

```
.background{ background-color: rgb(216,  
194, 183) }
```

This example shows the color as background, it is applied via the CSS property "background".

To optimize and compress your CSS code, you can use our [online CSS compressor and optimizer](#) based on csstidy. If you want to create a linear or radial gradient as background or border, check our [CSS Gradient Generator](#).

Hey! You found this booklet interesting? Support Converting Colors with the new Membership Option!

The pro membership hides all ads, plus gives you double the colors in the color bucket, and more awesome pro features!

[Learn more, Memberships starting at \\$2.50/m!](#)

**Follow me
on Twitter!**

@ConvertingColor