

Converting Colors

YIQ(199.5260, 18.8900, -0.9340)

Have a look what the booklet for
YIQ(199.5260, 18.8900, -0.9340)
contains.

YIQ(199.5260, 18.8900, -0.9340)	3
<i>Conversions</i>	4
<i>Details</i>	6
<i>Harmonies</i>	12
<i>Previews</i>	24
<i>Color Blindness Simulation</i>	28
<i>CSS Examples</i>	31

Color

**YIQ(199.5260, 18.8900,
-0.9340)**

Conversions

Conversions Part 1

Format	Color
Hex	D9C3B1
RGB	217, 195, 177
RGB Percent	85%, 76%, 69%
CMY	0.1490, 0.2353, 0.3058
CMYK	0.00, 0.10, 0.18, 0.15
HSL	27°, 34%, 77%
HSV	27°, 18%, 85%
XYZ	56.0695, 56.9546, 49.6450
YIQ	199.5260, 18.8900, -0.9340

Conversions

Conversions Part 2

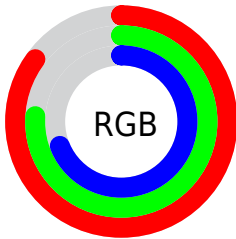
Format	Color
R _Y B	217, 210, 177
Decimal	14271409
CIE Lab	80.15, 4.88, 11.85
CIE LCh	80, 12.815, 67.604
Yxy	56.9546, 0.3447, 0.3501
Android (android.graphics.Color)	4292461489 (0xFFD9C3B1)
YUV	199.5260, -11.1053, 15.3247
Hunter-Lab	75.4683, 0.5479, 13.8253

Details

The YIQ color $199.5260, 18.8900, -0.9340$ is a light color, and the websafe version is hex `CCCCCC`. A complement of this color would be $194.4740, -18.8900, 0.9340$, and the grayscale version is $200.0000, -0.0000, -0.0000$.

A 20% lighter version of the original color is $250.7310, 7.8870, -5.2730$, and $145.3410, 17.9730, -0.8350$ is the 20% darker color. If you saturate the color by 10%, you get $189.9740, 29.2520, -1.5000$, and if you desaturate by 10%, it is $209.0780, 8.5280, -0.3680$.

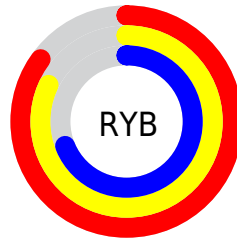
Distribution



Red (85%)

Green (76%)

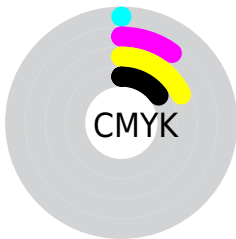
Blue (69%)



Red (85%)

Yellow (82%)

Blue (69%)

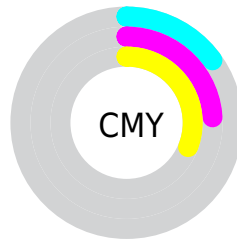


Cyan (0%)

Magenta (10%)

Yellow (18%)

Black (15%)



Cyan (15%)


Magenta (24%)


Yellow (31%)

Brightness & Saturation Gradients


These gradients show how the YIQ color 199.5260, 18.8900, -0.9340 changes by changing the brightness by 10 percent. The first figure shows a shift by +10% for each color and the second figure -10%.


Similar to the brightness gradients but the following saturation gradients show a change of the YIQ color 199.5260, 18.8900, -0.9340 by changing the saturation by 10% instead.


 199.5260, 18.8900,
-0.9340


 199.5260, 18.8900,
-0.9340


255.0000, -0.0000,
-0.0000


 172.2270, 18.2940,
-1.1460


 250.7310, 7.8870,
-5.2730

 145.3410, 17.9730,
-0.8350

 119.8570, 16.4600,
-0.9480

 94.9710, 16.1390,
-0.6370

 71.3730, 14.9470,
-1.0610

 48.8890, 13.4340,
-1.1740

 27.2480, 13.8010,

-2.3190

■ 3.8870, 7.7480,
2.7560

■ 0.0000, 0.0000,
0.0000

■ 199.5260, 18.8900,
-0.9340

■ 199.5260, 18.8900,
-0.9340

■ 189.9740, 29.2520,
-1.5000

■ 209.0780, 8.5280,
-0.3680

■ 180.5360, 39.2930,
-1.7550

■ 218.5160, -1.5130,
-0.1130

■ 170.9840, 49.6550,
-2.3210

■ 228.0680,
-11.8750, 0.4530

■ 161.4320, 60.0170,
-2.8870

■ 236.5940,
-19.3480, -1.7800

■ 151.9940, 70.0580,
-3.1420

■ 243.6380,
-22.6480, -8.0560

■ 142.4420, 80.4200,
-3.7080

■ 132.8900, 90.7820,
-4.2740

■ 123.3380,
101.1440, -4.8400

■ 122.4090,
102.3820, -5.2500

Harmonies

Analogous

The Analogous color harmony consists of three colors that are next to each other on the color wheel.



200.7700, 21.3190, 4.6070



199.5260, 18.8900, -0.9340



198.3570, 11.8760, -5.9800

Triad

The Triadic color harmony groups three colors that are evenly spaced from another and form a triangle on the color wheel.



199.5260, 18.8900, -0.9340



194.6660, -19.8510, -9.1870



200.6120, -1.4230, 9.2730

Complementary

The Complementary color scheme is a pair of colors which are on the opposite of each other on the color wheel.



199.5260, 18.8900, -0.9340



194.4740, -18.8900, 0.9340

Split Complementary

Split-complementary colors differ from the complementary color scheme. The scheme consists of three colors, the original color and two neighbors of the complement color.



198.9310, -12.7470, 5.2450



199.5260, 18.8900, -0.9340



195.1480, -24.0240, -5.1440

Square

The Square scheme is like the rectangle color scheme, but the four colors are evenly spaced on the color wheel.



199.5260, 18.8900, -0.9340



195.4020, -10.3600, -10.4880



196.5770, -20.6780, 0.2980



201.2990, 9.7640, 10.2760

Rectangle

The Rectangle color scheme consists of four colors that form a rectangle on the color wheel.



199.5260, 18.8900, -0.9340



196.8830, 4.4030, -8.2130



196.5770, -20.6780, 0.2980



199.9320, -5.3200, 8.3120

Sweetspot

The Sweet Spot groups the original color and five complimentary colors.



199.5260, 18.8900, -0.9340



248.5940, 7.0150, -0.4810



191.5820, 16.4570, 15.6330



124.0390, 4.2640, -0.1840



0.0000, 0.0000, 0.0000



128.0000, -0.0000, -0.0000

Same Dimension

The Same Dimension uses a secret algorithm to generate beautiful new colors.



199.5260, 18.8900, -0.9340



230.4190, 26.5010, -1.2030



210.6790, 13.6650, -10.8710



105.2240, 5.1810, -0.2830



97.5130, 81.6580, -4.1180



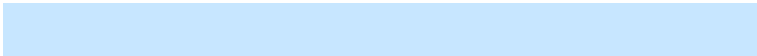
26.0810, 21.6410, -1.2310

Inverse Universe

The Inverse Universe completely reimagines the original color for something new.



194.4740, -18.8900, 0.9340



223.5810, -26.5010, 1.2030



183.3210, -13.6650, 10.8710



103.7760, -5.1810, 0.2830



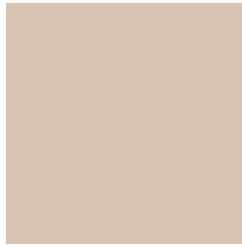
75.4870, -81.6580, 4.1180



19.9190, -21.6410, 1.2310

Previews

White Background



This preview shows how the YIQ color 199.5260, 18.8900, -0.9340 looks on a white background.

Color Contrast Check

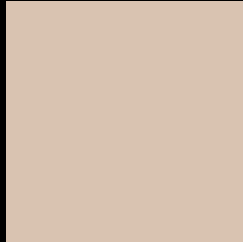
Large Text (above 18pt) WCAG AA × Fail

Any Text WCAG AA × Fail

Large Text (above 18pt) WCAG AAA × Fail

Any Text WCAG AAA × Fail

Black Background



This preview shows how the YIQ color 199.5260, 18.8900, -0.9340 looks on a black background.

Color Contrast Check

Large Text (above 18pt) WCAG AA ✓ Pass

Any Text WCAG AA ✓ Pass

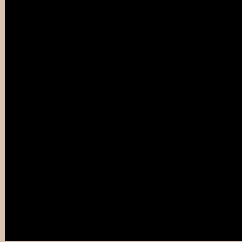
Large Text (above 18pt) WCAG AAA ✓ Pass

Any Text WCAG AAA ✓ Pass

If you want to check with other color combinations, try the [Color Contrast Checker](#).

YIQ 199.5260, 18.8900, -0.9340

Background



This preview shows how black text looks on a background with the YIQ color 199.5260, 18.8900, -0.9340.



This preview shows how white text looks on a background with the YIQ color 199.5260, 18.8900,

-0.9340.

Color Blindness Simulation

Color vision deficiency is a very complex topic, and I could not describe the different causes any better than Wikipedia does, so if you want to learn more, you should check out their [article about color blindness](#).

Dichromacy



Original Color

199.5260, 18.8900, -0.9340

Protanopia

198.5250, 11.4630, -4.0010

Deuteranopia

200.5700, 24.7580, 2.8540



Tritanopia

201.6800, 13.0650, 11.0250

Trichromacy



Original Color

199.5260, 18.8900, -0.9340

Protanomaly

199.0200, 14.4430, -2.9410

Deuteranomaly

200.2600, 22.6950, 1.6950

Tritanomaly

200.7140, 15.7250, 6.8690

Monochromacy



Original Color

199.5260, 18.8900, -0.9340

Achromatopsia

200.0000, -0.0000, -0.0000

Achromatomaly

199.7080, 6.6940, -0.1700

CSS Examples

Text

The CSS property to change the color of the text to YIQ 199.5260, 18.8900, -0.9340 is called "color". The color property can be set on classes, ids or directly on the HTML element.

This example shows how text in the color `rgb(217, 195, 177)` looks like.

```
.text, #text, p{  
    color:rgb(217, 195, 177)  
}
```

If you want to add a text shadow in that color use the text-shadow property, you can generate a text shadow directly with our [CSS Text Shadow Generator](#).

Here you see how black text with a 4 pixel rgb(217, 195, 177) colored shadow looks like.

```
.shadow{ text-shadow: 4px 4px 2px rgb(217, 195, 177) }
```

Border

The CSS property to change the border of an element to YIQ 199.5260, 18.8900, -0.9340 is called "border". The border property can be set on classes, ids or directly on the HTML element.

This example shows the color as border, it can be applied via the CSS property "border" or "border-color".

```
.border, #border, table{ border:4px solid rgb(217, 195, 177) }
```


If only the border color should be changed use the property `border-color`.

```
.border{ border-color:rgb(217, 195, 177) }
```

If you want to add a box shadow in that color use:

Here you see how a box with a 4 pixel `rgb(217, 195, 177)` colored shadow looks like.

```
.boxshadow{ -moz-box-shadow:4px 4px 4px  
4px rgb(217, 195, 177); -webkit-box-  
shadow:4px 4px 4px 4px rgb(217, 195, 177);  
box-shadow:4px 4px 4px 4px rgb(217, 195,  
177) }
```

Background

The CSS property to change the background color of an element to YIQ 199.5260, 18.8900, -0.9340 is called "background". The background property can be set on classes, ids or directly on the HTML element.

```
.background, #background, body{  
background: rgb(217, 195, 177) }
```

If only the background color should be changed can be used:

```
.background{ background-color: rgb(217,  
195, 177) }
```

This example shows the color as background, it is applied via the CSS property "background".

To optimize and compress your CSS code, you can use our [online CSS compressor and optimizer](#) based on csstidy. If you want to create a linear or radial gradient as background or border, check our [CSS Gradient Generator](#).

Hey! You found this booklet interesting? Support Converting Colors with the new Membership Option!

The pro membership hides all ads, plus gives you double the colors in the color bucket, and more awesome pro features!

[Learn more, Memberships starting at \\$2.50/m!](#)

**Follow me
on Twitter!**

@ConvertingColor