

Converting Colors

YIQ(199.9160, 17.9720, 4.6920)

Have a look what the booklet for
YIQ(199.9160, 17.9720, 4.6920)
contains.

YIQ(199.9160, 17.9720, 4.6920)	3
<i>Conversions</i>	4
<i>Details</i>	6
<i>Harmonies</i>	12
<i>Previews</i>	24
<i>Color Blindness Simulation</i>	28
<i>CSS Examples</i>	31

Color

**YIQ(199.9160, 17.9720,
4.6920)**

Conversions

Conversions Part 1

Format	Color
Hex	DCC0BC
RGB	220, 192, 188
RGB Percent	86%, 75%, 74%
CMY	0.1372, 0.2471, 0.2627
CMYK	0.00, 0.13, 0.15, 0.14
HSL	7°, 31%, 80%
HSV	7°, 15%, 86%
XYZ	57.4463, 56.5440, 55.4740
YIQ	199.9160, 17.9720, 4.6920

Conversions

Conversions Part 2

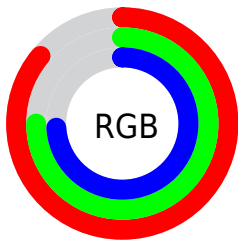
Format	Color
R _Y B	220, 193, 188
Decimal	14467260
CIE Lab	79.92, 9.29, 5.65
CIE LCh	80, 10.868, 31.301
Yxy	56.5440, 0.3390, 0.3337
Android (android.graphics.Color)	4292657340 (0xFFDCC0BC)
YUV	199.9160, -5.8746, 17.6137
Hunter-Lab	75.1957, 4.7740, 8.8971

Details

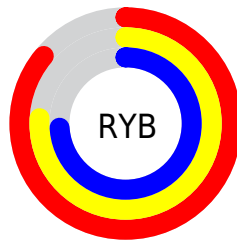
The YIQ color **199.9160, 17.9720, 4.6920** is a light color, and the websafe version is hex **FFCCCC**. A complement of this color would be **208.0840, -17.9720, -4.6920**, and the grayscale version is **200.0000, -0.0000, -0.0000**.

A 20% lighter version of the original color is **249.6370, 5.4560, 0.2400**, and **146.3180, 16.7800, 4.2680** is the 20% darker color. If you saturate the color by 10%, you get **186.2550, 30.2590, 7.7870**, and if you desaturate by 10%, it is **213.5770, 5.6850, 1.5970**.

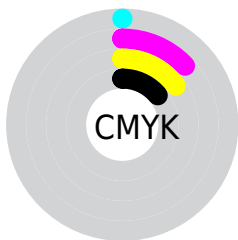
Distribution



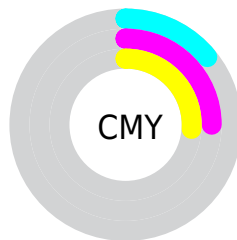
- Red (86%)
- Green (75%)
- Blue (74%)



- Red (86%)
- Yellow (76%)
- Blue (74%)



- Cyan (0%)
- Magenta (13%)
- Yellow (15%)
- Black (14%)





- Cyan (14%)
- Magenta (25%)
- Yellow (26%)

Brightness & Saturation Gradients


These gradients show how the YIQ color 199.9160, 17.9720, 4.6920 changes by changing the brightness by 10 percent. The first figure shows a shift by +10% for each color and the second figure -10%.

Similar to the brightness gradients but the following saturation gradients show a change of the YIQ color 199.9160, 17.9720, 4.6920 by changing the saturation by 10% instead.


 199.9160, 17.9720,
4.6920


 199.9160, 17.9720,
4.6920


255.0000, -0.0000,
-0.0000


 172.6170, 17.3760,
4.4800


 249.6370, 5.4560,
0.2400

 146.3180, 16.7800,
4.2680

 120.1330, 15.8630,
4.3670

 95.4210, 14.9920,
3.6320

 71.5350, 14.6710,
3.9430

 48.9370, 13.4790,
3.5190

 27.4530, 11.9660,

3.4060

■ 5.9800, 11.9200,
4.2400

■ 0.0000, 0.0000,
0.0000

■ 199.9160, 17.9720,
4.6920

■ 199.9160, 17.9720,
4.6920

■ 186.2550, 30.2590,
7.7870

■ 213.5770, 5.6850,
1.5970

■ 172.0070, 42.8210,
11.4050

■ 227.8250, -6.8770,
-2.0210

■ 158.3460, 55.1080,
14.5000

■ 241.4860,
-19.1640, -5.1160

■ 144.6850, 67.3950,
17.5950

■ 244.5350,
-20.8600, -7.4200

■ 131.0240, 79.6820,
20.6900

■ 116.7760, 92.2440,
24.3080

■ 103.1150,
104.5310, 27.4030

■ 89.4540, 116.8180,
30.4980

■ 81.6290, 123.6950,
32.5190

Harmonies

Analogous

The Analogous color harmony consists of three colors that are next to each other on the color wheel.



200.1700, 14.4410, 8.1130



199.9160, 17.9720, 4.6920



198.7970, 16.6890, 0.4090

Triad

The Triadic color harmony groups three colors that are evenly spaced from another and form a triangle on the color wheel.



199.9160, 17.9720, 4.6920



195.3100, -7.1050, -8.9050



197.8770, -12.6550, 3.5770

Complementary

The Complementary color scheme is a pair of colors which are on the opposite of each other on the color wheel.



199.9160, 17.9720, 4.6920



208.0840, -17.9720, -4.6920

Split Complementary

Split-complementary colors differ from the complementary color scheme. The scheme consists of three colors, the original color and two neighbors of the complement color.



196.4200, -18.7980, -0.7340



199.9160, 17.9720, 4.6920



194.6450, -15.3580, -8.0140

Square

The Square scheme is like the rectangle color scheme, but the four colors are evenly spaced on the color wheel.



199.9160, 17.9720, 4.6920



196.9260, 2.8440, -7.4920



195.1870, -19.7600, -5.3280



199.0740, -2.8440, 7.4920

Rectangle

The Rectangle color scheme consists of four colors that form a rectangle on the color wheel.



199.9160, 17.9720, 4.6920



198.1340, 14.1220, -2.6300



195.1870, -19.7600, -5.3280



197.2680, -15.3140, 2.2060

Sweetspot

The Sweet Spot groups the original color and five complimentary colors.



199.9160, 17.9720, 4.6920



248.5770, 5.6850, 1.5970



200.7600, 10.0840, 15.4920



123.6800, 3.8970, 0.9610



0.0000, 0.0000, 0.0000



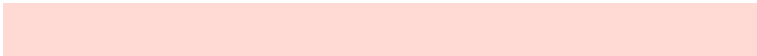
128.0000, -0.0000, -0.0000

Same Dimension

The Same Dimension uses a secret algorithm to generate beautiful new colors.



199.9160, 17.9720, 4.6920



227.7920, 24.2530, 6.5010



209.3080, 13.5720, -3.6760



102.8760, 6.2810, 1.8090



64.6410, 97.0580, 25.1700



17.2760, 25.7660, 6.6140

Inverse Universe

The Inverse Universe completely reimagines the original color for something new.



208.0840, -17.9720, -4.6920



239.2080, -24.2530, -6.5010



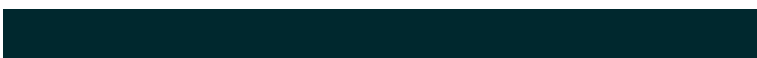
198.6920, -13.5720, 3.6760



105.5370, -6.0060, -1.2860



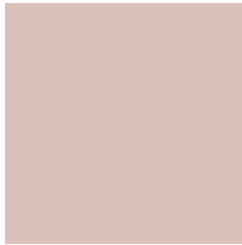
108.9460, -97.3330, -25.6930



28.7240, -25.7660, -6.6140

Previews

White Background



This preview shows how the YIQ color 199.9160, 17.9720, 4.6920 looks on a white background.

Color Contrast Check

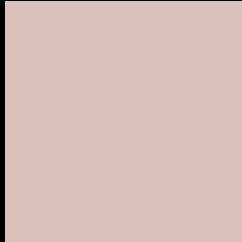
Large Text (above 18pt) WCAG AA × Fail

Any Text WCAG AA × Fail

Large Text (above 18pt) WCAG AAA × Fail

Any Text WCAG AAA × Fail

Black Background



This preview shows how the YIQ color 199.9160, 17.9720, 4.6920 looks on a black background.

Color Contrast Check

Large Text (above 18pt) WCAG AA ✓ Pass

Any Text WCAG AA ✓ Pass

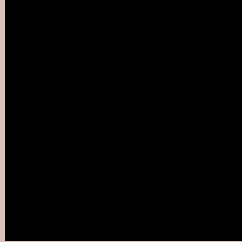
Large Text (above 18pt) WCAG AAA ✓ Pass

Any Text WCAG AAA ✓ Pass

If you want to check with other color combinations, try the [Color Contrast Checker](#).

YIQ 199.9160, 17.9720, 4.6920

Background



This preview shows how black text looks on a background with the YIQ color 199.9160, 17.9720, 4.6920.



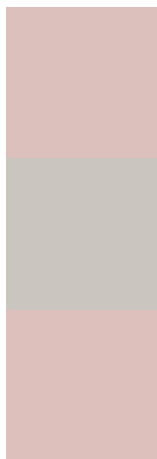
This preview shows how white text looks on a background with the YIQ color 199.9160, 17.9720,

4.6920.

Color Blindness Simulation

Color vision deficiency is a very complex topic, and I could not describe the different causes any better than Wikipedia does, so if you want to learn more, you should check out their [article about color blindness](#).

Dichromacy



Original Color

199.9160, 17.9720, 4.6920

Protanopia

198.1100, 5.5020, -0.5940

Deuteranopia

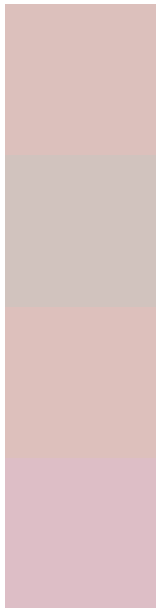
200.2150, 18.5680, 4.9040



Tritanopia

200.5770, 14.8530, 11.6610

Trichromacy



Original Color

199.9160, 17.9720, 4.6920

Protanomaly

198.6160, 9.9490, 1.4130

Deuteranomaly

200.2150, 18.5680, 4.9040

Tritanomaly

200.1810, 15.9080, 9.0600

Monochromacy



Original Color

199.9160, 17.9720, 4.6920

Achromatopsia

200.0000, -0.0000, -0.0000

Achromatomaly

199.8760, 6.2810, 1.8090

CSS Examples

Text

The CSS property to change the color of the text to YIQ 199.9160, 17.9720, 4.6920 is called "color". The color property can be set on classes, ids or directly on the HTML element.

This example shows how text in the color `rgb(220, 192, 188)` looks like.

```
.text, #text, p{  
    color:rgb(220, 192, 188)  
}
```

If you want to add a text shadow in that color use the text-shadow property, you can generate a text shadow directly with our [CSS Text Shadow Generator](#).

Here you see how black text with a 4 pixel rgb(220, 192, 188) colored shadow looks like.

```
.shadow{ text-shadow: 4px 4px 2px rgb(220, 192, 188) }
```

Border

The CSS property to change the border of an element to YIQ 199.9160, 17.9720, 4.6920 is called "border". The border property can be set on classes, ids or directly on the HTML element.

This example shows the color as border, it can be applied via the CSS property "border" or "border-color".

```
.border, #border, table{ border:4px solid rgb(220, 192, 188) }
```


If only the border color should be changed use the property `border-color`.

```
.border{ border-color:rgb(220, 192, 188) }
```

If you want to add a box shadow in that color use:

Here you see how a box with a 4 pixel `rgb(220, 192, 188)` colored shadow looks like.

```
.boxshadow{ -moz-box-shadow:4px 4px 4px 4px rgb(220, 192, 188); -webkit-box-shadow:4px 4px 4px 4px rgb(220, 192, 188); box-shadow:4px 4px 4px 4px rgb(220, 192, 188) }
```

Background

The CSS property to change the background color of an element to YIQ 199.9160, 17.9720, 4.6920 is called "background". The background property can be set on classes, ids or directly on the HTML element.

```
.background, #background, body{  
background: rgb(220, 192, 188) }
```

If only the background color should be changed can be used:

```
.background{ background-color: rgb(220,  
192, 188) }
```

This example shows the color as background, it is applied via the CSS property "background".

To optimize and compress your CSS code, you can use our [online CSS compressor and optimizer](#) based on csstidy. If you want to create a linear or radial gradient as background or border, check our [CSS Gradient Generator](#).

Hey! You found this booklet interesting? Support Converting Colors with the new Membership Option!

The pro membership hides all ads, plus gives you double the colors in the color bucket, and more awesome pro features!

[Learn more, Memberships starting at \\$2.50/m!](#)

**Follow me
on Twitter!**

@ConvertingColor