

Converting Colors

YIQ(200.4740, 7.4730, 2.2330)

Have a look what the booklet for
YIQ(200.4740, 7.4730, 2.2330)
contains.

| | |
|--|----|
| YIQ(200.4740, 7.4730, 2.2330) | 3 |
| <i>Conversions</i> | 4 |
| <i>Details</i> | 6 |
| <i>Harmonies</i> | 12 |
| <i>Previews</i> | 24 |
| <i>Color Blindness Simulation</i> | 28 |
| <i>CSS Examples</i> | 31 |

Color

**YIQ(200.4740, 7.4730,
2.2330)**

Conversions

Conversions Part 1

| Format | Color |
|---------------|---------------------------|
| Hex | D1C5C4 |
| RGB | 209, 197, 196 |
| RGB Percent | 82%, 77%, 77% |
| CMY | 0.1804, 0.2275, 0.2313 |
| CMYK | 0.00, 0.06, 0.06, 0.18 |
| HSL | 5°, 12%, 79% |
| HSV | 5°, 6%, 82% |
| XYZ | 56.2263, 57.4724, 60.3590 |
| YIQ | 200.4740, 7.4730, 2.2330 |

Conversions

Conversions Part 2

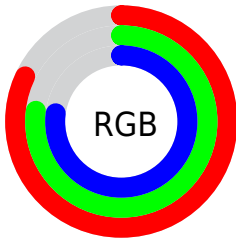
| Format | Color |
|-------------------------------------|------------------------------|
| R_{YB} | 209, 197, 196 |
| Decimal | 13747652 |
| CIE Lab | 80.44, 4.02, 1.99 |
| CIE LCh | 80, 4.486, 26.318 |
| Yxy | 57.4724, 0.3230, 0.3302 |
| Android (android.graphics.Color) | 4291937732 (0xFFD1C5C4) |
| YUV | 200.4740, -2.2057, 7.4773 |
| Hunter-Lab | 75.8106, -0.2807, 5.8618 |

Details

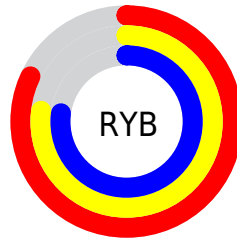
The YIQ color $200.4740, 7.4730, 2.2330$ is a light color, and the websafe version is hex `CCCCCC`. A complement of this color would be $204.5260, -7.4730, -2.2330$, and the grayscale version is $200.0000, -0.0000, -0.0000$.

A 20% lighter version of the original color is $254.1850, 0.9170, -0.0990$, and $146.4740, 7.4730, 2.2330$ is the 20% darker color. If you saturate the color by 10%, you get $186.9270, 19.4390, 5.6390$, and if you desaturate by 10%, it is $214.0210, -4.4930, -1.1730$.

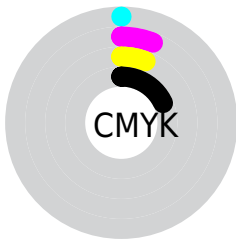
Distribution



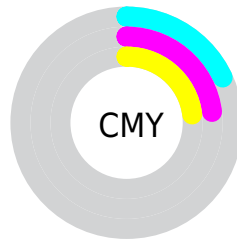
- Red (82%)
- Green (77%)
- Blue (77%)



- Red (82%)
- Yellow (77%)
- Blue (77%)



- Cyan (0%)
- Magenta (6%)
- Yellow (6%)
- Black (18%)



- Cyan (18%)
- Magenta (23%)
- Yellow (23%)

Brightness & Saturation Gradients

These gradients show how the YIQ color 200.4740, 7.4730, 2.2330 changes by changing the brightness by 10 percent. The first figure shows a shift by +10% for each color and the second figure -10%.

Similar to the brightness gradients but the following saturation gradients show a change of the YIQ color 200.4740, 7.4730, 2.2330 by changing the saturation by 10% instead.

■ 200.4740, 7.4730,
2.2330

■ 200.4740, 7.4730,
2.2330

255.0000, -0.0000,
-0.0000

■ 173.1750, 6.8770,
2.0210

254.1850, 0.9170,
-0.0990

■ 146.4740, 7.4730,
2.2330

■ 121.1750, 6.8770,
2.0210

■ 95.8760, 6.2810,
1.8090

■ 71.9900, 5.9600,
2.1200

■ 49.5770, 5.6850,
1.5970

■ 28.6910, 5.3640,

1.9080

■ 3.8870, 7.7480,
2.7560

■ 0.0000, 0.0000,
0.0000

■ 200.4740, 7.4730,
2.2330

■ 200.4740, 7.4730,
2.2330

■ 186.9270, 19.4390,
5.6390

■ 214.0210, -4.4930,
-1.1730

■ 172.7930, 31.6800,
9.5680

■ 228.1550,
-16.7340, -5.1020

■ 159.2460, 43.6460,
12.9740

■ 241.2460,
-27.4160, -9.7520

■ 145.6990, 55.6120,
16.3800

■ 131.6790, 67.5320,
20.6200

■ 118.1320, 79.4980,
24.0260

■ 104.5850, 91.4640,
27.4320

■ 91.0380, 103.4300,
30.8380

■ 76.9040, 115.6710,
34.7670

Harmonies

Analogous

The Analogous color harmony consists of three colors that are next to each other on the color wheel.



200.6310, 5.5930, 3.2650



200.4740, 7.4730, 2.2330



200.1210, 6.9690, 0.3530

Triad

The Triadic color harmony groups three colors that are evenly spaced from another and form a triangle on the color wheel.



200.4740, 7.4730, 2.2330



198.8100, -2.5210, -3.8730



199.4170, -5.5480, 1.4280

Complementary

The Complementary color scheme is a pair of colors which are on the opposite of each other on the color wheel.



200.4740, 7.4730, 2.2330



204.5260, -7.4730, -2.2330

Split Complementary

Split-complementary colors differ from the complementary color scheme. The scheme consists of three colors, the original color and two neighbors of the complement color.



198.5800, -7.5650, -0.5650



200.4740, 7.4730, 2.2330



198.3690, -5.5930, -3.2650

Square

The Square scheme is like the rectangle color scheme, but the four colors are evenly spaced on the color wheel.



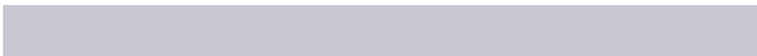
200.4740, 7.4730, 2.2330



198.7890, 1.9720, -2.7000



198.5260, -7.4730, -2.2330



200.2110, -1.9720, 2.7000

Rectangle

The Rectangle color scheme consists of four colors that form a rectangle on the color wheel.



200.4740, 7.4730, 2.2330



199.9960, 5.8230, -0.9050



198.5260, -7.4730, -2.2330



199.4060, -7.0150, 0.4810

Sweetspot

The Sweet Spot groups the original color and five complimentary colors.



200.4740, 7.4730, 2.2330



251.4950, 2.9800, 1.0600



201.2550, 3.8960, 6.4880



125.8970, 1.7880, 0.6360



0.0000, 0.0000, 0.0000



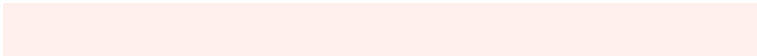
128.0000, -0.0000, -0.0000

Same Dimension

The Same Dimension uses a secret algorithm to generate beautiful new colors.



200.4740, 7.4730, 2.2330



243.5560, 10.1780, 2.7700



203.9960, 5.8230, -0.9050



99.2780, 5.0890, 1.3850



57.8630, 96.5530, 28.8170



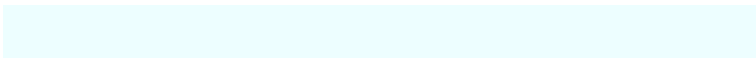
14.0200, 23.6110, 7.1230

Inverse Universe

The Inverse Universe completely reimagines the original color for something new.



204.5260, -7.4730, -2.2330



249.0310, -10.4530, -3.2930



201.0040, -5.8230, 0.9050



101.7220, -5.0890, -1.3850



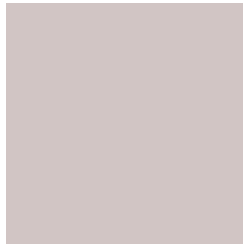
110.1370, -96.5530, -28.8170



26.9800, -23.6110, -7.1230

Previews

White Background



This preview shows how the YIQ color 200.4740, 7.4730, 2.2330 looks on a white background.

Color Contrast Check

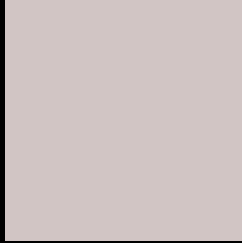
Large Text (above 18pt) WCAG AA × Fail

Any Text WCAG AA × Fail

Large Text (above 18pt) WCAG AAA × Fail

Any Text WCAG AAA × Fail

Black Background



This preview shows how the YIQ color 200.4740, 7.4730, 2.2330 looks on a black background.

Color Contrast Check

Large Text (above 18pt) WCAG AA ✓ Pass

Any Text WCAG AA ✓ Pass

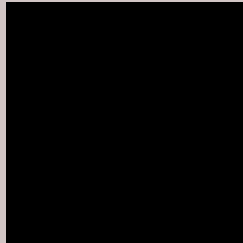
Large Text (above 18pt) WCAG AAA ✓ Pass

Any Text WCAG AAA ✓ Pass

If you want to check with other color combinations, try the [Color Contrast Checker](#).

YIQ 200.4740, 7.4730, 2.2330

Background



This preview shows how black text looks on a background with the YIQ color 200.4740, 7.4730, 2.2330.



This preview shows how white text looks on a background with the YIQ color 200.4740, 7.4730,

Color Blindness Simulation

Color vision deficiency is a very complex topic, and I could not describe the different causes any better than Wikipedia does, so if you want to learn more, you should check out their [article about color blindness](#).

Dichromacy



Original Color

200.4740, 7.4730, 2.2330

Protanopia

200.2670, 3.6220, 0.4380

Deuteranopia

201.5290, 14.8080, 6.9680



Tritanopia

201.4940, 4.7210, 8.0570

Trichromacy



Original Color

200.4740, 7.4730, 2.2330

Protanomaly

200.2780, 5.0890, 1.3850

Deuteranomaly

200.9200, 12.1490, 5.5970

Tritanomaly

201.2120, 5.4550, 5.7670

Monochromacy



Original Color

200.4740, 7.4730, 2.2330

Achromatopsia

200.0000, -0.0000, -0.0000

Achromatomaly

200.1960, 2.3840, 0.8480

CSS Examples

Text

The CSS property to change the color of the text to YIQ 200.4740, 7.4730, 2.2330 is called "color". The color property can be set on classes, ids or directly on the HTML element.

This example shows how text in the color `rgb(209, 197, 196)` looks like.

```
.text, #text, p{  
    color:rgb(209, 197, 196)  
}
```

If you want to add a text shadow in that color use the text-shadow property, you can generate a text shadow directly with our [CSS Text Shadow Generator](#).

Here you see how black text with a 4 pixel rgb(209, 197, 196) colored shadow looks like.

```
.shadow{ text-shadow: 4px 4px 2px rgb(209, 197, 196) }
```

Border

The CSS property to change the border of an element to YIQ 200.4740, 7.4730, 2.2330 is called "border". The border property can be set on classes, ids or directly on the HTML element.

This example shows the color as border, it can be applied via the CSS property "border" or "border-color".

```
.border, #border, table{ border:4px solid rgb(209, 197, 196) }
```


If only the border color should be changed use the property `border-color`.

```
.border{ border-color:rgb(209, 197, 196) }
```

If you want to add a box shadow in that color use:

Here you see how a box with a 4 pixel `rgb(209, 197, 196)` colored shadow looks like.

```
.boxshadow{ -moz-box-shadow:4px 4px 4px  
4px rgb(209, 197, 196); -webkit-box-  
shadow:4px 4px 4px 4px rgb(209, 197, 196);  
box-shadow:4px 4px 4px 4px rgb(209, 197,  
196) }
```

Background

The CSS property to change the background color of an element to YIQ 200.4740, 7.4730, 2.2330 is called "background". The background property can be set on classes, ids or directly on the HTML element.

```
.background, #background, body{  
background: rgb(209, 197, 196) }
```

If only the background color should be changed can be used:

```
.background{ background-color: rgb(209,  
197, 196) }
```

This example shows the color as background, it is applied via the CSS property "background".

To optimize and compress your CSS code, you can use our [online CSS compressor and optimizer](#) based on csstidy. If you want to create a linear or radial gradient as background or border, check our [CSS Gradient Generator](#).

Hey! You found this booklet interesting? Support Converting Colors with the new Membership Option!

The pro membership hides all ads, plus gives you double the colors in the color bucket, and more awesome pro features!

[Learn more, Memberships starting at \\$2.50/m!](#)

**Follow me
on Twitter!**

@ConvertingColor