

Converting Colors

YIQ(200.8700, 23.6130, -3.9310)

Have a look what the booklet for
YIQ(200.8700, 23.6130, -3.9310)
contains.

YIQ(200.8700, 23.6130, -3.9310)	3
<i>Conversions</i>	4
<i>Details</i>	6
<i>Harmonies</i>	12
<i>Previews</i>	24
<i>Color Blindness Simulation</i>	28
<i>CSS Examples</i>	31

Color

**YIQ(200.8700, 23.6130,
-3.9310)**

Conversions

Conversions Part 1

Format	Color
Hex	DDC5A8
RGB	221, 197, 168
RGB Percent	87%, 77%, 66%
CMY	0.1333, 0.2275, 0.3411
CMYK	0.00, 0.11, 0.24, 0.13
HSL	33°, 44%, 76%
HSV	33°, 24%, 87%
XYZ	56.8564, 58.1299, 45.2838
YIQ	200.8700, 23.6130, -3.9310

Conversions

Conversions Part 2

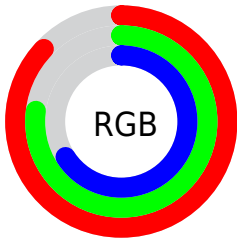
Format	Color
R _Y B	212, 221, 168
Decimal	14534056
CIE Lab	80.81, 4.00, 17.63
CIE LCh	81, 18.077, 77.203
Yxy	58.1299, 0.3548, 0.3627
Android (android.graphics.Color)	4292724136 (0xFFDDC5A8)
YUV	200.8700, -16.2049, 17.6540
Hunter-Lab	76.2429, -0.3129, 18.1553

Details

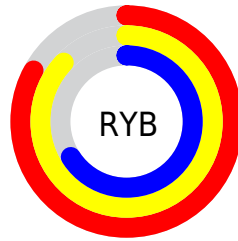
The YIQ color $200.8700, 23.6130, -3.9310$ is a light color, and the websafe version is hex $CCCC99$. A complement of this color would be $188.1300, -23.6130, 3.9310$, and the grayscale version is $201.0000, -0.0000, 0.0000$.

A 20% lighter version of the original color is $250.7650, 10.5470, -9.4290$, and $146.5000, 21.7790, -3.7330$ is the 20% darker color. If you saturate the color by 10%, you get $192.4920, 33.4250, -5.5430$, and if you desaturate by 10%, it is $209.2480, 13.8010, -2.3190$.

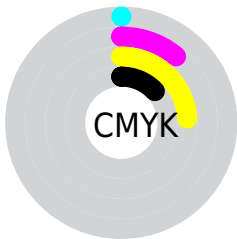
Distribution



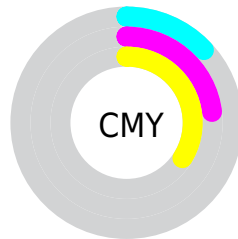
- Red (87%)
- Green (77%)
- Blue (66%)



- Red (83%)
- Yellow (87%)
- Blue (66%)



- Cyan (0%)
- Magenta (11%)
- Yellow (24%)
- Black (13%)



- Cyan (13%)
- Magenta (23%)
- Yellow (34%)

Brightness & Saturation Gradients

These gradients show how the YIQ color 200.8700, 23.6130, -3.9310 changes by changing the brightness by 10 percent. The first figure shows a shift by +10% for each color and the second figure -10%.

Similar to the brightness gradients but the following saturation gradients show a change of the YIQ color 200.8700, 23.6130, -3.9310 by changing the saturation by 10% instead.

■ 200.8700, 23.6130,
-3.9310

■ 200.8700, 23.6130,
-3.9310

255.0000, -0.0000,
-0.0000

■ 173.6850, 22.6960,
-3.8320

■ 250.7650, 10.5470,
-9.4290

■ 146.5000, 21.7790,
-3.7330

■ 254.6580, 0.9630,
-0.9330

■ 121.2010, 21.1830,
-3.9450

■ 96.1300, 19.9450,
-3.5350

■ 72.5320, 18.7530,
-3.9590

■ 49.1620, 16.9190,
-3.7610

■ 27.8200, 17.8820,

-4.6940

■ 4.1860, 8.3440,
2.9680

■ 0.0000, 0.0000,
0.0000

■ 200.8700, 23.6130,
-3.9310

■ 200.8700, 23.6130,
-3.9310

■ 192.4920, 33.4250,
-5.5430

■ 209.2480, 13.8010,
-2.3190

■ 184.1140, 43.2370,
-7.1550

■ 217.6260, 3.9890,
-0.7070

■ 175.7360, 53.0490,
-8.7670

■ 226.0040, -5.8230,
0.9050

■ 167.3580, 62.8610,
-10.3790

■ 234.2680,
-15.3140, 2.2060

■ 158.9800, 72.6730,
-11.9910

■ 240.1380,
-18.0640, -3.0240

■ 150.4880, 82.8060,
-13.9140

■ 244.8340,
-20.2640, -7.2080

■ 142.1100, 92.6180,
-15.5260

■ 137.1060, 98.4410,
-16.4310

Harmonies

Analogous

The Analogous color harmony consists of three colors that are next to each other on the color wheel.



202.4350, 29.5720, 3.7160



200.8700, 23.6130, -3.9310



199.3090, 11.8310, -10.6730

Triad

The Triadic color harmony groups three colors that are evenly spaced from another and form a triangle on the color wheel.



200.8700, 23.6130, -3.9310



194.1530, -31.5880, -11.2360



203.1120, 3.1610, 14.3050

Complementary

The Complementary color scheme is a pair of colors which are on the opposite of each other on the color wheel.



200.8700, 23.6130, -3.9310



188.1300, -23.6130, 3.9310

Split Complementary

Split-complementary colors differ from the complementary color scheme. The scheme consists of three colors, the original color and two neighbors of the complement color.



201.3810, -13.8940, 9.5140



200.8700, 23.6130, -3.9310



195.2870, -34.6610, -5.1010

Square

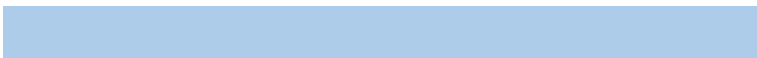
The Square scheme is like the rectangle color scheme, but the four colors are evenly spaced on the color wheel.



200.8700, 23.6130, -3.9310



195.2050, -20.1710, -14.4030



198.0370, -27.7850, 2.4470



204.1260, 17.7410, 14.3890

Rectangle

The Rectangle color scheme consists of four colors that form a rectangle on the color wheel.



200.8700, 23.6130, -3.9310



197.7530, 1.6530, -13.4430



198.0370, -27.7850, 2.4470



202.9480, -2.2490, 13.2310

Sweetspot

The Sweet Spot groups the original color and five complimentary colors.



200.8700, 23.6130, -3.9310



248.2520, 7.9780, -1.4140



186.6970, 23.5630, 19.0110



123.8110, 4.9060, -0.8060



0.0000, 0.0000, 0.0000



128.0000, -0.0000, -0.0000

Same Dimension

The Same Dimension uses a secret algorithm to generate beautiful new colors.



200.8700, 23.6130, -3.9310



226.6060, 33.1040, -5.2320



214.3600, 15.8210, -16.9070



105.8110, 4.9060, -0.8060



107.4920, 76.9830, -13.0090



28.4290, 20.5410, -3.3230

Inverse Universe

The Inverse Universe completely reimagines the original color for something new.



188.1300, -23.6130, 3.9310



209.3940, -33.1040, 5.2320



174.6400, -15.8210, 16.9070



103.1890, -4.9060, 0.8060



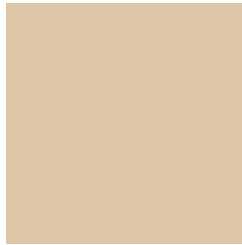
66.0950, -77.2580, 12.4860



17.5710, -20.5410, 3.3230

Previews

White Background



This preview shows how the YIQ color 200.8700, 23.6130, -3.9310 looks on a white background.

Color Contrast Check

Large Text (above 18pt) WCAG AA × Fail

Any Text WCAG AA × Fail

Large Text (above 18pt) WCAG AAA × Fail

Any Text WCAG AAA × Fail

Black Background



This preview shows how the YIQ color 200.8700, 23.6130, -3.9310 looks on a black background.

Color Contrast Check

Large Text (above 18pt) WCAG AA ✓ Pass

Any Text WCAG AA ✓ Pass

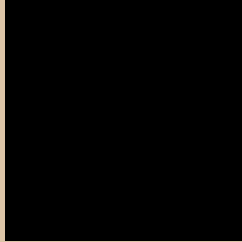
Large Text (above 18pt) WCAG AAA ✓ Pass

Any Text WCAG AAA ✓ Pass

If you want to check with other color combinations, try the [Color Contrast Checker](#).

YIQ 200.8700, 23.6130, -3.9310

Background



This preview shows how black text looks on a background with the YIQ color 200.8700, 23.6130, -3.9310.



This preview shows how white text looks on a background with the YIQ color 200.8700, 23.6130,

-3.9310.

Color Blindness Simulation

Color vision deficiency is a very complex topic, and I could not describe the different causes any better than Wikipedia does, so if you want to learn more, you should check out their [article about color blindness](#).

Dichromacy



Original Color

200.8700, 23.6130, -3.9310

Protanopia

199.8690, 16.1860, -6.9980

Deuteranopia

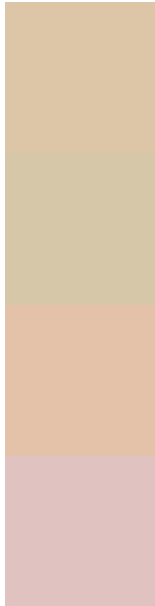
201.6260, 30.3520, 0.5920



Tritanopia

203.7620, 15.7700, 11.5620

Trichromacy



Original Color

200.8700, 23.6130, -3.9310

Protanomaly

200.3640, 19.1660, -5.9380

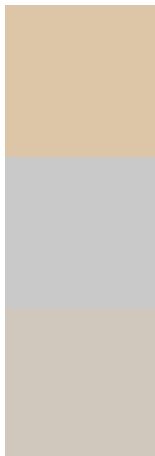
Deuteranomaly

201.0170, 27.6930, -0.7790

Tritanomaly

202.7420, 18.5220, 5.7380

Monochromacy



Original Color

200.8700, 23.6130, -3.9310

Achromatopsia

201.0000, -0.0000, 0.0000

Achromatomaly

201.1380, 8.2990, -1.7250

CSS Examples

Text

The CSS property to change the color of the text to YIQ 200.8700, 23.6130, -3.9310 is called "color". The color property can be set on classes, ids or directly on the HTML element.

This example shows how text in the color `rgb(221, 197, 168)` looks like.

```
.text, #text, p{  
    color:rgb(221, 197, 168)  
}
```

If you want to add a text shadow in that color use the text-shadow property, you can generate a text shadow directly with our [CSS Text Shadow Generator](#).

Here you see how black text with a 4 pixel rgb(221, 197, 168) colored shadow looks like.

```
.shadow{ text-shadow: 4px 4px 2px rgb(221, 197, 168) }
```

Border

The CSS property to change the border of an element to YIQ 200.8700, 23.6130, -3.9310 is called "border". The border property can be set on classes, ids or directly on the HTML element.

This example shows the color as border, it can be applied via the CSS property "border" or "border-color".

```
.border, #border, table{ border:4px solid rgb(221, 197, 168) }
```


If only the border color should be changed use the property border-color.

```
.border{ border-color:rgb(221, 197, 168) }
```

If you want to add a box shadow in that color use:

Here you see how a box with a 4 pixel rgb(221, 197, 168) colored shadow looks like.

```
.boxshadow{ -moz-box-shadow:4px 4px 4px  
4px rgb(221, 197, 168); -webkit-box-  
shadow:4px 4px 4px 4px rgb(221, 197, 168);  
box-shadow:4px 4px 4px 4px rgb(221, 197,  
168) }
```

Background

The CSS property to change the background color of an element to YIQ 200.8700, 23.6130, -3.9310 is called "background". The background property can be set on classes, ids or directly on the HTML element.

```
.background, #background, body{  
background: rgb(221, 197, 168) }
```

If only the background color should be changed can be used:

```
.background{ background-color: rgb(221,  
197, 168) }
```

This example shows the color as background, it is applied via the CSS property "background".

To optimize and compress your CSS code, you can use our [online CSS compressor and optimizer](#) based on csstidy. If you want to create a linear or radial gradient as background or border, check our [CSS Gradient Generator](#).

Hey! You found this booklet interesting? Support Converting Colors with the new Membership Option!

The pro membership hides all ads, plus gives you double the colors in the color bucket, and more awesome pro features!

[Learn more, Memberships starting at \\$2.50/m!](#)

**Follow me
on Twitter!**

@ConvertingColor