

Converting Colors

YIQ(200.8710, 13.8450, 7.9010)

Have a look what the booklet for
YIQ(200.8710, 13.8450, 7.9010)
contains.

YIQ(200.8710, 13.8450, 7.9010)	3
<i>Conversions</i>	4
<i>Details</i>	6
<i>Harmonies</i>	12
<i>Previews</i>	24
<i>Color Blindness Simulation</i>	28
<i>CSS Examples</i>	31

Color

**YIQ(200.8710, 13.8450,
7.9010)**

Conversions

Conversions Part 1

Format	Color
Hex	DBC0C7
RGB	219, 192, 199
RGB Percent	86%, 75%, 78%
CMY	0.1411, 0.2471, 0.2196
CMYK	0.00, 0.12, 0.09, 0.14
HSL	344°, 27%, 81%
HSV	344°, 12%, 86%
XYZ	58.3761, 56.8812, 61.9429
YIQ	200.8710, 13.8450, 7.9010

Conversions

Conversions Part 2

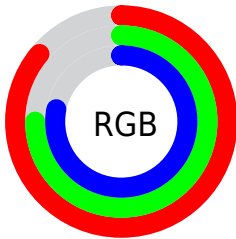
Format	Color
R _Y B	219, 192, 199
Decimal	14401735
CIE Lab	80.11, 10.73, -0.01
CIE LCh	80, 10.734, 359.957
Yxy	56.8812, 0.3294, 0.3210
Android (android.graphics.Color)	4292591815 (0xFFDBC0C7)
YUV	200.8710, -0.9224, 15.8991
Hunter-Lab	75.4196, 6.1778, 4.0982

Details

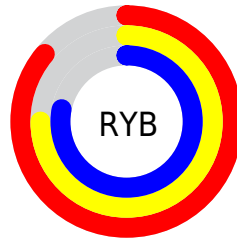
The YIQ color **200.8710, 13.8450, 7.9010** is a light color, and the websafe version is hex **CCCCCC**. A complement of this color would be **210.1290, -13.8450, -7.9010**, and the grayscale version is **201.0000, -0.0000, 0.0000**.

A 20% lighter version of the original color is **250.8910, 1.9250, 3.6610**, and **147.1590, 12.9740, 7.1660** is the 20% darker color. If you saturate the color by 10%, you get **186.1330, 25.0310, 14.4310**, and if you desaturate by 10%, it is **215.6090, 2.6590, 1.3710**.

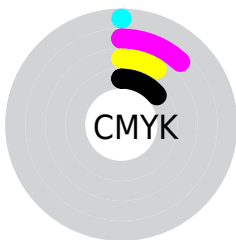
Distribution



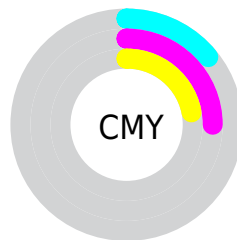
- Red (86%)
- Green (75%)
- Blue (78%)



- Red (86%)
- Yellow (75%)
- Blue (78%)



- Cyan (0%)
- Magenta (12%)
- Yellow (9%)
- Black (14%)





- Cyan (14%)
- Magenta (25%)
- Yellow (22%)

Brightness & Saturation Gradients


These gradients show how the YIQ color 200.8710, 13.8450, 7.9010 changes by changing the brightness by 10 percent. The first figure shows a shift by +10% for each color and the second figure -10%.


Similar to the brightness gradients but the following saturation gradients show a change of the YIQ color 200.8710, 13.8450, 7.9010 by changing the saturation by 10% instead.


 200.8710, 13.8450,
7.9010


 200.8710, 13.8450,
7.9010


255.0000, -0.0000,
-0.0000


 173.5720, 13.2490,
7.6890


 250.8910, 1.9250,
3.6610

 146.5720, 13.2490,
7.6890

 120.9740, 12.0570,
7.2650

 95.9740, 12.0570,
7.2650

 72.2620, 11.1860,
6.5300

 49.9630, 10.5900,
6.3180

 28.3650, 9.3980,

5.8940

■ 6.9910, 13.3870,
5.1870

■ 0.0000, 0.0000,
0.0000

■ 200.8710, 13.8450,
7.9010

■ 200.8710, 13.8450,
7.9010

■ 186.1330, 25.0310,
14.4310

■ 215.6090, 2.6590,
1.3710

■ 171.3950, 36.2170,
20.9610

■ 230.3470, -8.5270,
-5.1590

■ 156.5430, 47.7240,
27.1800

■ 243.4380,
-19.2090, -9.8090

■ 141.8050, 58.9100,
33.7100

■ 244.2360,
-21.4560, -7.6320

■ 127.0670, 70.0960,
40.2400

■ 112.9160, 81.0070,
46.2470

■ 98.1780, 92.1930,
52.7770

■ 83.3260, 103.7000,
58.9960

■ 71.9790, 112.2270,
64.1550

Harmonies

Analogous

The Analogous color harmony consists of three colors that are next to each other on the color wheel.



200.5050, 6.1880, 9.0040



200.8710, 13.8450, 7.9010



200.6170, 17.3760, 4.4800

Triad

The Triadic color harmony groups three colors that are evenly spaced from another and form a triangle on the color wheel.



200.8710, 13.8450, 7.9010



197.2250, 3.4400, -7.2800



196.4200, -18.7980, -0.7340

Complementary

The Complementary color scheme is a pair of colors which are on the opposite of each other on the color wheel.



200.8710, 13.8450, 7.9010



210.1290, -13.8450, -7.9010

Split Complementary

Split-complementary colors differ from the complementary color scheme. The scheme consists of three colors, the original color and two neighbors of the complement color.



195.4860, -19.1640, -5.1160



200.8710, 13.8450, 7.9010



196.4950, -6.1880, -9.0040

Square

The Square scheme is like the rectangle color scheme, but the four colors are evenly spaced on the color wheel.



200.8710, 13.8450, 7.9010



198.5250, 11.4630, -4.0010



195.5310, -15.0370, -8.3250



197.8770, -12.6550, 3.5770

Rectangle

The Rectangle color scheme consists of four colors that form a rectangle on the color wheel.



200.8710, 13.8450, 7.9010



200.0360, 17.5140, 1.9780



195.5310, -15.0370, -8.3250



196.1810, -19.6230, -2.3030

Sweetspot

The Sweet Spot groups the original color and five complimentary colors.



200.8710, 13.8450, 7.9010



248.2180, 5.3180, 2.7420



201.0580, 3.2530, 12.6370



123.3210, 3.5300, 2.1060



0.0000, 0.0000, 0.0000



128.0000, -0.0000, -0.0000

Same Dimension

The Same Dimension uses a secret algorithm to generate beautiful new colors.



200.8710, 13.8450, 7.9010



229.5020, 19.4380, 11.1660



203.5950, 14.4420, 2.5860



102.6310, 5.5930, 3.2650



56.8570, 88.6630, 50.6710



15.1220, 23.5640, 13.4840

Inverse Universe

The Inverse Universe completely reimagines the original color for something new.



200.8710, 13.8450, 7.9010



229.5020, 19.4380, 11.1660



207.4050, -14.4420, -2.5860



102.6310, 5.5930, 3.2650



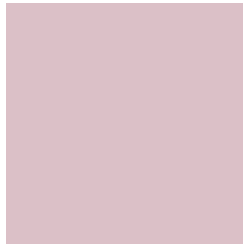
56.8570, 88.6630, 50.6710



15.1220, 23.5640, 13.4840

Previews

White Background



This preview shows how the YIQ color 200.8710, 13.8450, 7.9010 looks on a white background.

Color Contrast Check

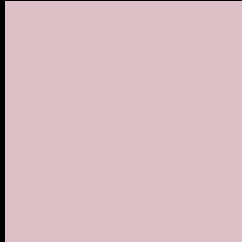
Large Text (above 18pt) WCAG AA × Fail

Any Text WCAG AA × Fail

Large Text (above 18pt) WCAG AAA × Fail

Any Text WCAG AAA × Fail

Black Background



This preview shows how the YIQ color 200.8710, 13.8450, 7.9010 looks on a black background.

Color Contrast Check

Large Text (above 18pt) WCAG AA ✓ Pass

Any Text WCAG AA ✓ Pass

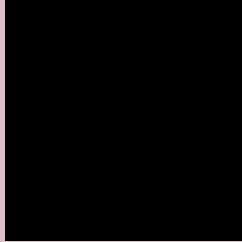
Large Text (above 18pt) WCAG AAA ✓ Pass

Any Text WCAG AAA ✓ Pass

If you want to check with other color combinations, try the [Color Contrast Checker](#).

YIQ 200.8710, 13.8450, 7.9010

Background



This preview shows how black text looks on a background with the YIQ color 200.8710, 13.8450, 7.9010.



This preview shows how white text looks on a background with the YIQ color 200.8710, 13.8450,

Color Blindness Simulation

Color vision deficiency is a very complex topic, and I could not describe the different causes any better than Wikipedia does, so if you want to learn more, you should check out their [article about color blindness](#).

Dichromacy



Original Color

200.8710, 13.8450, 7.9010

Protanopia

199.3530, 0.5040, 1.8800

Deuteranopia

200.5720, 13.2490, 7.6890



Tritanopia

201.3810, 12.4690, 10.8130

Trichromacy



Original Color

200.8710, 13.8450, 7.9010

Protanomaly

200.1580, 5.5470, 4.0990

Deuteranomaly

200.5720, 13.2490, 7.6890

Tritanomaly

201.0390, 13.4320, 9.8800

Monochromacy



Original Color

200.8710, 13.8450, 7.9010

Achromatopsia

201.0000, -0.0000, 0.0000

Achromatomaly

201.2180, 5.3180, 2.7420

CSS Examples

Text

The CSS property to change the color of the text to YIQ 200.8710, 13.8450, 7.9010 is called "color". The color property can be set on classes, ids or directly on the HTML element.

This example shows how text in the color `rgb(219, 192, 199)` looks like.

```
.text, #text, p{  
    color:rgb(219, 192, 199)  
}
```

If you want to add a text shadow in that color use the text-shadow property, you can generate a text shadow directly with our [CSS Text Shadow Generator](#).

Here you see how black text with a 4 pixel rgb(219, 192, 199) colored shadow looks like.

```
.shadow{ text-shadow: 4px 4px 2px rgb(219, 192, 199) }
```

Border

The CSS property to change the border of an element to YIQ 200.8710, 13.8450, 7.9010 is called "border". The border property can be set on classes, ids or directly on the HTML element.

This example shows the color as border, it can be applied via the CSS property "border" or "border-color".

```
.border, #border, table{ border:4px solid rgb(219, 192, 199) }
```


If only the border color should be changed use the property `border-color`.

```
.border{ border-color:rgb(219, 192, 199) }
```

If you want to add a box shadow in that color use:

Here you see how a box with a 4 pixel `rgb(219, 192, 199)` colored shadow looks like.

```
.boxshadow{ -moz-box-shadow:4px 4px 4px  
4px rgb(219, 192, 199); -webkit-box-  
shadow:4px 4px 4px 4px rgb(219, 192, 199);  
box-shadow:4px 4px 4px 4px rgb(219, 192,  
199) }
```

Background

The CSS property to change the background color of an element to YIQ 200.8710, 13.8450, 7.9010 is called "background". The background property can be set on classes, ids or directly on the HTML element.

```
.background, #background, body{  
background: rgb(219, 192, 199) }
```

If only the background color should be changed can be used:

```
.background{ background-color: rgb(219,  
192, 199) }
```

This example shows the color as background, it is applied via the CSS property "background".

To optimize and compress your CSS code, you can use our [online CSS compressor and optimizer](#) based on csstidy. If you want to create a linear or radial gradient as background or border, check our [CSS Gradient Generator](#).

Hey! You found this booklet interesting? Support Converting Colors with the new Membership Option!

The pro membership hides all ads, plus gives you double the colors in the color bucket, and more awesome pro features!

[Learn more, Memberships starting at \\$2.50/m!](#)

**Follow me
on Twitter!**

@ConvertingColor