

Converting Colors

YIQ(201.4830, 20.4490, -1.6550)

Have a look what the booklet for
YIQ(201.4830, 20.4490, -1.6550)
contains.

YIQ(201.4830, 20.4490, -1.6550)	3
<i>Conversions</i>	4
<i>Details</i>	6
<i>Harmonies</i>	12
<i>Previews</i>	24
<i>Color Blindness Simulation</i>	28
<i>CSS Examples</i>	31

Color

**YIQ(201.4830, 20.4490,
-1.6550)**

Conversions

Conversions Part 1

Format	Color
Hex	DCC5B0
RGB	220, 197, 176
RGB Percent	86%, 77%, 69%
CMY	0.1372, 0.2275, 0.3097
CMYK	0.00, 0.10, 0.20, 0.14
HSL	29°, 39%, 78%
HSV	29°, 20%, 86%
XYZ	57.3214, 58.2810, 49.3154
YIQ	201.4830, 20.4490, -1.6550

Conversions

Conversions Part 2

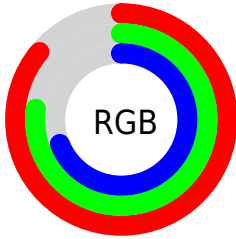
Format	Color
R _Y B	220, 216, 176
Decimal	14468528
CIE Lab	80.89, 4.79, 13.47
CIE LCh	81, 14.293, 70.428
Yxy	58.2810, 0.3476, 0.3534
Android (android.graphics.Color)	4292658608 (0xFFDCC5B0)
YUV	201.4830, -12.5631, 16.2394
Hunter-Lab	76.3420, 0.4283, 15.1392

Details

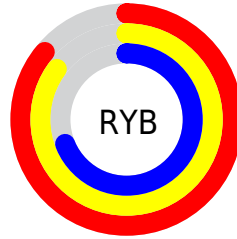
The YIQ color $201.4830, 20.4490, -1.6550$ is a light color, and the websafe version is hex $CCCCCC$. A complement of this color would be $194.5170, -20.4490, 1.6550$, and the grayscale version is $202.0000, -0.0000, 0.0000$.

A 20% lighter version of the original color is $251.7910, 7.6580, -6.6300$, and $147.2980, 19.5320, -1.5560$ is the 20% darker color. If you saturate the color by 10%, you get $191.9310, 30.8110, -2.2210$, and if you desaturate by 10%, it is $211.0350, 10.0870, -1.0890$.

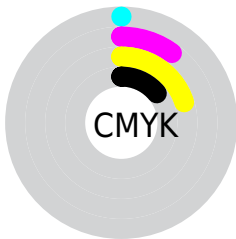
Distribution



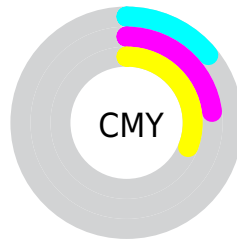
- Red (86%)
- Green (77%)
- Blue (69%)



- Red (86%)
- Yellow (85%)
- Blue (69%)



- Cyan (0%)
- Magenta (10%)
- Yellow (20%)
- Black (14%)



- Cyan (14%)
- Magenta (23%)
- Yellow (31%)

Brightness & Saturation Gradients

These gradients show how the YIQ color 201.4830, 20.4490, -1.6550 changes by changing the brightness by 10 percent. The first figure shows a shift by +10% for each color and the second figure -10%.

Similar to the brightness gradients but the following saturation gradients show a change of the YIQ color 201.4830, 20.4490, -1.6550 by changing the saturation by 10% instead.

■ 201.4830, 20.4490,
-1.6550

■ 201.4830, 20.4490,
-1.6550

255.0000, -0.0000,
-0.0000

■ 174.1840, 19.8530,
-1.8670

■ 251.7910, 7.6580,
-6.6300

■ 147.2980, 19.5320,
-1.5560

■ 121.8140, 18.0190,
-1.6690

■ 96.6290, 17.1020,
-1.5700

■ 73.0310, 15.9100,
-1.9940

■ 49.9600, 14.6720,
-1.5840

■ 28.3190, 15.0390,

-2.7290

■ 4.7840, 9.5360,
3.3920

■ 0.0000, 0.0000,
0.0000

■ 201.4830, 20.4490,
-1.6550

■ 201.4830, 20.4490,
-1.6550

■ 191.9310, 30.8110,
-2.2210

■ 211.0350, 10.0870,
-1.0890

■ 182.9660, 40.8980,
-3.3100

■ 220.0000, 0.0000,
0.0000

■ 173.4140, 51.2600,
-3.8760

■ 229.5520,
-10.3620, 0.5660

■ 164.4490, 61.3470,
-4.9650

■ 237.4910,
-17.5600, -1.1440

■ 154.8970, 71.7090,
-5.5310

■ 244.5350,
-20.8600, -7.4200

■ 145.9320, 81.7960,
-6.6200

■ 136.3800, 92.1580,
-7.1860

■ 127.4150,
102.2450, -8.2750

Harmonies

Analogous

The Analogous color harmony consists of three colors that are next to each other on the color wheel.



202.4390, 23.7490, 4.6210



201.4830, 20.4490, -1.6550



199.8300, 11.9220, -6.8140

Triad

The Triadic color harmony groups three colors that are evenly spaced from another and form a triangle on the color wheel.



201.4830, 20.4490, -1.6550



196.2850, -23.1520, -9.9360



202.7370, -0.2770, 10.5310

Complementary

The Complementary color scheme is a pair of colors which are on the opposite of each other on the color wheel.



201.4830, 20.4490, -1.6550



194.5170, -20.4490, 1.6550

Split Complementary

Split-complementary colors differ from the complementary color scheme. The scheme consists of three colors, the original color and two neighbors of the complement color.



200.6860, -13.4350, 6.7010



201.4830, 20.4490, -1.6550



197.1800, -27.0500, -5.3700

Square

The Square scheme is like the rectangle color scheme, but the four colors are evenly spaced on the color wheel.



201.4830, 20.4490, -1.6550



196.7930, -13.0190, -11.8590



199.0220, -23.4290, 0.5950



203.6090, 11.8270, 11.4350

Rectangle

The Rectangle color scheme consists of four colors that form a rectangle on the color wheel.



201.4830, 20.4490, -1.6550



198.9430, 4.1740, -9.5700



199.0220, -23.4290, 0.5950



202.1710, -4.4950, 9.8810

Sweetspot

The Sweet Spot groups the original color and five complimentary colors.



201.4830, 20.4490, -1.6550



248.5940, 7.0150, -0.4810



191.7780, 18.8410, 16.4810



124.0390, 4.2640, -0.1840



0.0000, 0.0000, 0.0000



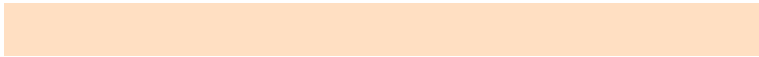
128.0000, -0.0000, -0.0000

Same Dimension

The Same Dimension uses a secret algorithm to generate beautiful new colors.



201.4830, 20.4490, -1.6550



229.2620, 28.3810, -2.2350



214.3970, 14.3990, -13.1610



105.2240, 5.1810, -0.2830



100.4480, 80.2830, -6.7330



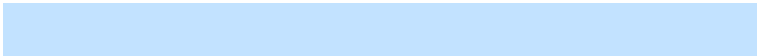
26.6680, 21.3660, -1.7540

Inverse Universe

The Inverse Universe completely reimagines the original color for something new.



194.5170, -20.4490, 1.6550



219.7380, -28.3810, 2.2350



181.6030, -14.3990, 13.1610



103.1890, -4.9060, 0.8060



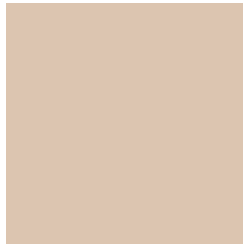
73.1390, -80.5580, 6.2100



19.3320, -21.3660, 1.7540

Previews

White Background



This preview shows how the YIQ color 201.4830, 20.4490, -1.6550 looks on a white background.

Color Contrast Check

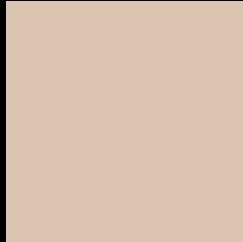
Large Text (above 18pt) WCAG AA × Fail

Any Text WCAG AA × Fail

Large Text (above 18pt) WCAG AAA × Fail

Any Text WCAG AAA × Fail

Black Background



This preview shows how the YIQ color 201.4830, 20.4490, -1.6550 looks on a black background.

Color Contrast Check

Large Text (above 18pt) WCAG AA ✓ Pass

Any Text WCAG AA ✓ Pass

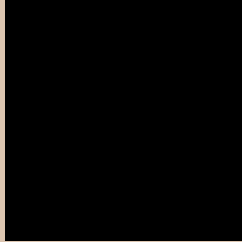
Large Text (above 18pt) WCAG AAA ✓ Pass

Any Text WCAG AAA ✓ Pass

If you want to check with other color combinations, try the [Color Contrast Checker](#).

YIQ 201.4830, 20.4490, -1.6550

Background



This preview shows how black text looks on a background with the YIQ color 201.4830, 20.4490, -1.6550.



This preview shows how white text looks on a background with the YIQ color 201.4830, 20.4490,

-1.6550.

Color Blindness Simulation

Color vision deficiency is a very complex topic, and I could not describe the different causes any better than Wikipedia does, so if you want to learn more, you should check out their [article about color blindness](#).

Dichromacy



Original Color

201.4830, 20.4490, -1.6550

Protanopia

200.4820, 13.0220, -4.7220

Deuteranopia

202.5270, 26.3170, 2.1330



Tritanopia

203.2780, 14.2570, 11.4490

Trichromacy



Original Color

201.4830, 20.4490, -1.6550

Protanomaly

200.9770, 16.0020, -3.6620

Deuteranomaly

202.2170, 24.2540, 0.9740

Tritanomaly

202.8990, 16.6420, 6.7700

Monochromacy



Original Color

201.4830, 20.4490, -1.6550

Achromatopsia

201.0000, -0.0000, 0.0000

Achromatomaly

201.4800, 7.3360, -0.7920

CSS Examples

Text

The CSS property to change the color of the text to YIQ 201.4830, 20.4490, -1.6550 is called "color". The color property can be set on classes, ids or directly on the HTML element.

This example shows how text in the color `rgb(220, 197, 176)` looks like.

```
.text, #text, p{  
    color:rgb(220, 197, 176)  
}
```

If you want to add a text shadow in that color use the text-shadow property, you can generate a text shadow directly with our [CSS Text Shadow Generator](#).

Here you see how black text with a 4 pixel rgb(220, 197, 176) colored shadow looks like.

```
.shadow{ text-shadow: 4px 4px 2px rgb(220, 197, 176) }
```

Border

The CSS property to change the border of an element to YIQ 201.4830, 20.4490, -1.6550 is called "border". The border property can be set on classes, ids or directly on the HTML element.

This example shows the color as border, it can be applied via the CSS property "border" or "border-color".

```
.border, #border, table{ border:4px solid rgb(220, 197, 176) }
```


If only the border color should be changed use the property border-color.

```
.border{ border-color:rgb(220, 197, 176) }
```

If you want to add a box shadow in that color use:

Here you see how a box with a 4 pixel rgb(220, 197, 176) colored shadow looks like.

```
.boxshadow{ -moz-box-shadow:4px 4px 4px  
4px rgb(220, 197, 176); -webkit-box-  
shadow:4px 4px 4px 4px rgb(220, 197, 176);  
box-shadow:4px 4px 4px 4px rgb(220, 197,  
176) }
```

Background

The CSS property to change the background color of an element to YIQ 201.4830, 20.4490, -1.6550 is called "background". The background property can be set on classes, ids or directly on the HTML element.

```
.background, #background, body{  
background: rgb(220, 197, 176) }
```

If only the background color should be changed can be used:

```
.background{ background-color: rgb(220,  
197, 176) }
```

This example shows the color as background, it is applied via the CSS property "background".

To optimize and compress your CSS code, you can use our [online CSS compressor and optimizer](#) based on csstidy. If you want to create a linear or radial gradient as background or border, check our [CSS Gradient Generator](#).

Hey! You found this booklet interesting? Support Converting Colors with the new Membership Option!

The pro membership hides all ads, plus gives you double the colors in the color bucket, and more awesome pro features!

[Learn more, Memberships starting at \\$2.50/m!](#)

**Follow me
on Twitter!**

@ConvertingColor