

Converting Colors

YIQ(201.5140, 19.1640, 5.1160)

Have a look what the booklet for
YIQ(201.5140, 19.1640, 5.1160)
contains.

YIQ(201.5140, 19.1640, 5.1160)	3
<i>Conversions</i>	4
<i>Details</i>	6
<i>Harmonies</i>	12
<i>Previews</i>	24
<i>Color Blindness Simulation</i>	28
<i>CSS Examples</i>	31

Color

**YIQ(201.5140, 19.1640,
5.1160)**

Conversions

Conversions Part 1

Format	Color
Hex	DFC1BD
RGB	223, 193, 189
RGB Percent	87%, 76%, 74%
CMY	0.1254, 0.2432, 0.2587
CMYK	0.00, 0.13, 0.15, 0.13
HSL	7°, 35%, 81%
HSV	7°, 15%, 87%
XYZ	58.6915, 57.5001, 56.1609
YIQ	201.5140, 19.1640, 5.1160

Conversions

Conversions Part 2

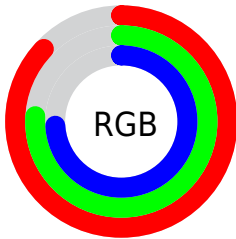
Format	Color
R _Y B	223, 194, 189
Decimal	14664125
CIE Lab	80.46, 10.00, 5.92
CIE LCh	80, 11.620, 30.608
Yxy	57.5001, 0.3405, 0.3336
Android (android.graphics.Color)	4292854205 (0xFFDFC1BD)
YUV	201.5140, -6.1694, 18.8432
Hunter-Lab	75.8288, 5.4585, 9.1684

Details

The YIQ color **201.5140, 19.1640, 5.1160** is a light color, and the websafe version is hex **FFCCCC**. A complement of this color would be **210.4860, -19.1640, -5.1160**, and the grayscale version is **202.0000, -0.0000, 0.0000**.

A 20% lighter version of the original color is **250.3380, 4.8600, 0.0280**, and **147.3290, 18.2470, 5.2150** is the 20% darker color. If you saturate the color by 10%, you get **187.2660, 31.7260, 8.7340**, and if you desaturate by 10%, it is **215.7620, 6.6020, 1.4980**.

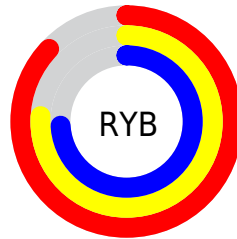
Distribution



Red (87%)

Green (76%)

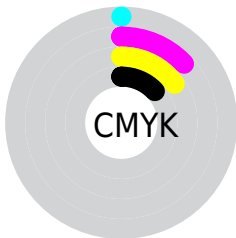
Blue (74%)



Red (87%)

Yellow (76%)

Blue (74%)

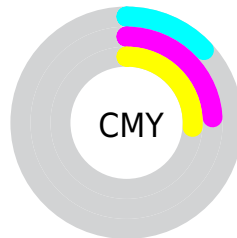


Cyan (0%)

Magenta (13%)

Yellow (15%)

Black (13%)



Cyan (13%)


Magenta (24%)


Yellow (26%)

Brightness & Saturation Gradients


These gradients show how the YIQ color 201.5140, 19.1640, 5.1160 changes by changing the brightness by 10 percent. The first figure shows a shift by +10% for each color and the second figure -10%.

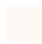
Similar to the brightness gradients but the following saturation gradients show a change of the YIQ color 201.5140, 19.1640, 5.1160 by changing the saturation by 10% instead.


 201.5140, 19.1640,
5.1160


 201.5140, 19.1640,
5.1160


255.0000, -0.0000,
-0.0000


 174.2150, 18.5680,
4.9040


 250.3380, 4.8600,
0.0280

 147.3290, 18.2470,
5.2150

 121.6170, 17.3760,
4.4800

 96.4320, 16.4590,
4.5790

 72.8340, 15.2670,
4.1550

 50.2360, 14.0750,
3.7310

 28.7520, 12.5620,

3.6180

■ 6.8770, 13.7080,
4.8760

■ 0.0000, 0.0000,
0.0000

■ 201.5140, 19.1640,
5.1160

■ 201.5140, 19.1640,
5.1160

■ 187.2660, 31.7260,
8.7340

■ 215.7620, 6.6020,
1.4980

■ 173.4910, 44.3340,
11.5180

■ 229.5370, -6.0060,
-1.2860

■ 159.2430, 56.8960,
15.1360

■ 243.6710,
-18.2470, -5.2150

■ 144.9950, 69.4580,
18.7540

■ 245.4320,
-19.0720, -6.7840

■ 131.3340, 81.7450,
21.8490

■ 116.9720, 94.6280,
25.1560

■ 102.7240,
107.1900, 28.7740

■ 88.4760, 119.7520,
32.3920

■ 81.9390, 125.7580,
33.6780

Harmonies

Analogous

The Analogous color harmony consists of three colors that are next to each other on the color wheel.



201.8820, 15.3120, 8.8480



201.5140, 19.1640, 5.1160



200.2810, 18.2020, 0.5220

Triad

The Triadic color harmony groups three colors that are evenly spaced from another and form a triangle on the color wheel.



201.5140, 19.1640, 5.1160



196.8970, -7.3800, -9.4280



199.1050, -13.2970, 4.1990

Complementary

The Complementary color scheme is a pair of colors which are on the opposite of each other on the color wheel.



201.5140, 19.1640, 5.1160



210.4860, -19.1640, -5.1160

Split Complementary

Split-complementary colors differ from the complementary color scheme. The scheme consists of three colors, the original color and two neighbors of the complement color.



197.8220, -19.9900, -1.1580



201.5140, 19.1640, 5.1160



195.9330, -16.2290, -8.7490

Square

The Square scheme is like the rectangle color scheme, but the four colors are evenly spaced on the color wheel.



201.5140, 19.1640, 5.1160



197.8120, 3.1650, -7.8030



196.5890, -20.9520, -5.7520



200.8890, -3.7610, 7.5910

Rectangle

The Rectangle color scheme consists of four colors that form a rectangle on the color wheel.



201.5140, 19.1640, 5.1160



199.9060, 14.7640, -3.2520



196.5890, -20.9520, -5.7520



198.7840, -16.8270, 2.0930

Sweetspot

The Sweet Spot groups the original color and five complimentary colors.



201.5140, 19.1640, 5.1160



247.0610, 7.1980, 1.7100



202.5860, 10.6340, 16.5380



122.9790, 4.4930, 1.1730



0.0000, 0.0000, 0.0000



128.0000, -0.0000, -0.0000

Same Dimension

The Same Dimension uses a secret algorithm to generate beautiful new colors.



201.5140, 19.1640, 5.1160



225.6890, 26.0410, 7.1370



211.4930, 14.4890, -3.7750



104.8760, 6.2810, 1.8090



64.9510, 99.1210, 26.3290



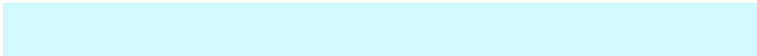
17.8740, 26.9580, 7.0380

Inverse Universe

The Inverse Universe completely reimagines the original color for something new.



210.4860, -19.1640, -5.1160



238.3110, -26.0410, -7.1370



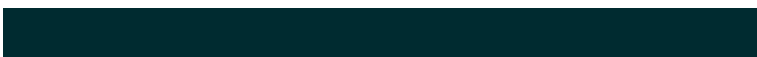
200.5070, -14.4890, 3.7750



108.1240, -6.2810, -1.8090



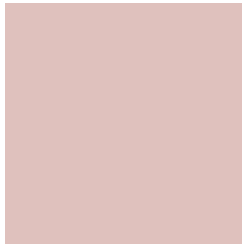
111.0490, -99.1210, -26.3290



30.7130, -27.2330, -7.5610

Previews

White Background



This preview shows how the YIQ color 201.5140, 19.1640, 5.1160 looks on a white background.

Color Contrast Check

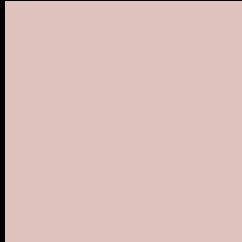
Large Text (above 18pt) WCAG AA × Fail

Any Text WCAG AA × Fail

Large Text (above 18pt) WCAG AAA × Fail

Any Text WCAG AAA × Fail

Black Background



This preview shows how the YIQ color 201.5140, 19.1640, 5.1160 looks on a black background.

Color Contrast Check

Large Text (above 18pt) WCAG AA ✓ Pass

Any Text WCAG AA ✓ Pass

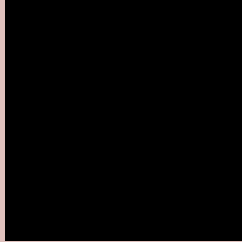
Large Text (above 18pt) WCAG AAA ✓ Pass

Any Text WCAG AAA ✓ Pass

If you want to check with other color combinations, try the [Color Contrast Checker](#).

YIQ 201.5140, 19.1640, 5.1160

Background



This preview shows how black text looks on a background with the YIQ color 201.5140, 19.1640, 5.1160.

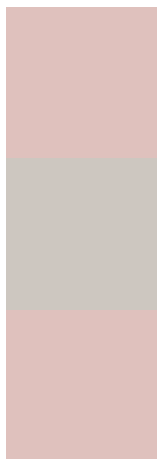


This preview shows how white text looks on a background with the YIQ color 201.5140, 19.1640,

Color Blindness Simulation

Color vision deficiency is a very complex topic, and I could not describe the different causes any better than Wikipedia does, so if you want to learn more, you should check out their [article about color blindness](#).

Dichromacy



Original Color

201.5140, 19.1640, 5.1160

Protanopia

199.9960, 5.8230, -0.9050

Deuteranopia

201.5140, 19.1640, 5.1160



Tritanopia

202.1750, 16.0450, 12.0850

Trichromacy



Original Color

201.5140, 19.1640, 5.1160

Protanomaly

200.8010, 10.8660, 1.3140

Deuteranomaly

201.5140, 19.1640, 5.1160

Tritanomaly

201.7790, 17.1000, 9.4840

Monochromacy



Original Color

201.5140, 19.1640, 5.1160

Achromatopsia

202.0000, -0.0000, 0.0000

Achromatomaly

202.0610, 7.1980, 1.7100

CSS Examples

Text

The CSS property to change the color of the text to YIQ 201.5140, 19.1640, 5.1160 is called "color". The color property can be set on classes, ids or directly on the HTML element.

This example shows how text in the color `rgb(223, 193, 189)` looks like.

```
.text, #text, p{  
    color:rgb(223, 193, 189)  
}
```

If you want to add a text shadow in that color use the text-shadow property, you can generate a text shadow directly with our [CSS Text Shadow Generator](#).

Here you see how black text with a 4 pixel rgb(223, 193, 189) colored shadow looks like.

```
.shadow{ text-shadow: 4px 4px 2px rgb(223, 193, 189) }
```

Border

The CSS property to change the border of an element to YIQ 201.5140, 19.1640, 5.1160 is called "border". The border property can be set on classes, ids or directly on the HTML element.

This example shows the color as border, it can be applied via the CSS property "border" or "border-color".

```
.border, #border, table{ border:4px solid rgb(223, 193, 189) }
```


If only the border color should be changed use the property `border-color`.

```
.border{ border-color:rgb(223, 193, 189) }
```

If you want to add a box shadow in that color use:

Here you see how a box with a 4 pixel `rgb(223, 193, 189)` colored shadow looks like.

```
.boxshadow{ -moz-box-shadow:4px 4px 4px 4px rgb(223, 193, 189); -webkit-box-shadow:4px 4px 4px 4px rgb(223, 193, 189); box-shadow:4px 4px 4px 4px rgb(223, 193, 189) }
```

Background

The CSS property to change the background color of an element to YIQ 201.5140, 19.1640, 5.1160 is called "background". The background property can be set on classes, ids or directly on the HTML element.

```
.background, #background, body{  
background: rgb(223, 193, 189) }
```

If only the background color should be changed can be used:

```
.background{ background-color: rgb(223,  
193, 189) }
```

This example shows the color as background, it is applied via the CSS property "background".

To optimize and compress your CSS code, you can use our [online CSS compressor and optimizer](#) based on csstidy. If you want to create a linear or radial gradient as background or border, check our [CSS Gradient Generator](#).

Hey! You found this booklet interesting? Support Converting Colors with the new Membership Option!

The pro membership hides all ads, plus gives you double the colors in the color bucket, and more awesome pro features!

[Learn more, Memberships starting at \\$2.50/m!](#)

**Follow me
on Twitter!**

@ConvertingColor