

Converting Colors

YIQ(202.1400, 23.1530, 4.4090)

Have a look what the booklet for
YIQ(202.1400, 23.1530, 4.4090)
contains.

YIQ(202.1400, 23.1530, 4.4090)	3
<i>Conversions</i>	4
<i>Details</i>	6
<i>Harmonies</i>	12
<i>Previews</i>	24
<i>Color Blindness Simulation</i>	28
<i>CSS Examples</i>	31

Color

**YIQ(202.1400, 23.1530,
4.4090)**

Conversions

Conversions Part 1

Format	Color
Hex	E3C1B8
RGB	227, 193, 184
RGB Percent	89%, 76%, 72%
CMY	0.1097, 0.2432, 0.2783
CMYK	0.00, 0.15, 0.19, 0.11
HSL	13°, 43%, 81%
HSV	13°, 19%, 89%
XYZ	59.4058, 57.9294, 53.4117
YIQ	202.1400, 23.1530, 4.4090

Conversions

Conversions Part 2

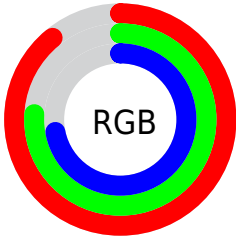
Format	Color
R _Y B	227, 195, 184
Decimal	14926264
CIE Lab	80.70, 10.69, 8.99
CIE LCh	81, 13.967, 40.066
Yxy	57.9294, 0.3479, 0.3393
Android (android.graphics.Color)	4293116344 (0xFFE3C1B8)
YUV	202.1400, -8.9430, 21.8022
Hunter-Lab	76.1113, 6.1265, 11.6707

Details

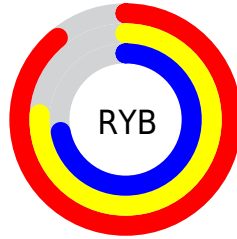
The YIQ color **202.1400, 23.1530, 4.4090** is a light color, and the websafe version is hex **FFCCCC**. A complement of this color would be **208.8600, -23.1530, -4.4090**, and the grayscale version is **202.0000, -0.0000, 0.0000**.

A 20% lighter version of the original color is **249.7680, 6.4650, -1.5270**, and **147.6560, 21.6400, 4.2960** is the 20% darker color. If you saturate the color by 10%, you get **188.9520, 35.4860, 6.6700**, and if you desaturate by 10%, it is **215.3280, 10.8200, 2.1480**.

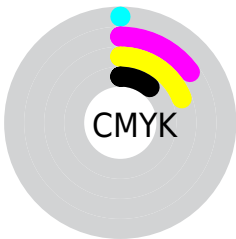
Distribution



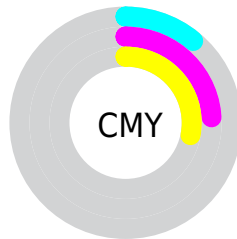
- Red (89%)
- Green (76%)
- Blue (72%)



- Red (89%)
- Yellow (76%)
- Blue (72%)



- Cyan (0%)
- Magenta (15%)
- Yellow (19%)
- Black (11%)



- Cyan (11%)
- Magenta (24%)
- Yellow (28%)

Brightness & Saturation Gradients

These gradients show how the YIQ color 202.1400, 23.1530, 4.4090 changes by changing the brightness by 10 percent. The first figure shows a shift by +10% for each color and the second figure -10%.

Similar to the brightness gradients but the following saturation gradients show a change of the YIQ color 202.1400, 23.1530, 4.4090 by changing the saturation by 10% instead.

■ 202.1400, 23.1530,
4.4090

■ 202.1400, 23.1530,
4.4090

■ 255.0000, -0.0000,
-0.0000

■ 174.8410, 22.5570,
4.1970

■ 249.7680, 6.4650,
-1.5270

■ 147.6560, 21.6400,
4.2960

■ 122.0580, 20.4480,
3.8720

■ 96.8730, 19.5310,
3.9710

■ 73.2750, 18.3390,
3.5470

■ 50.6770, 17.1470,
3.1230

■ 29.0790, 15.9550,

2.6990

■ 7.4750, 14.9000,
5.3000

■ 0.0000, 0.0000,
0.0000

■ 202.1400, 23.1530,
4.4090

■ 202.1400, 23.1530,
4.4090

■ 188.9520, 35.4860,
6.6700

■ 215.3280, 10.8200,
2.1480

■ 175.8780, 47.4980,
9.2420

■ 228.4020, -1.1920,
-0.4240

■ 162.6900, 59.8310,
11.5030

■ 241.5900,
-13.5250, -2.6850

■ 149.5020, 72.1640,
13.7640

■ 246.6280,
-16.6880, -5.9360

■ 136.4280, 84.1760,
16.3360

■ 123.2400, 96.5090,
18.5970

■ 110.0520,
108.8420, 20.8580

■ 96.8640, 121.1750,
23.1190

■ 95.4620, 122.3670,
23.5430

Harmonies

Analogous

The Analogous color harmony consists of three colors that are next to each other on the color wheel.



202.6330, 20.4470, 9.3990



202.1400, 23.1530, 4.4090



200.5970, 20.1280, -1.3440

Triad

The Triadic color harmony groups three colors that are evenly spaced from another and form a triangle on the color wheel.



202.1400, 23.1530, 4.4090



196.2060, -12.7440, -11.3360



200.5720, -13.1140, 6.3900

Complementary

The Complementary color scheme is a pair of colors which are on the opposite of each other on the color wheel.



202.1400, 23.1530, 4.4090



208.8600, -23.1530, -4.4090

Split Complementary

Split-complementary colors differ from the complementary color scheme. The scheme consists of three colors, the original color and two neighbors of the complement color.



198.2070, -22.5120, 0.4960



202.1400, 23.1530, 4.4090



195.8830, -21.9600, -9.5120

Square

The Square scheme is like the rectangle color scheme, but the four colors are evenly spaced on the color wheel.



202.1400, 23.1530, 4.4090



197.9640, -0.3190, -10.7430



196.4790, -26.4540, -5.1580



202.3240, -0.5520, 10.0080

Rectangle

The Rectangle color scheme consists of four colors that form a rectangle on the color wheel.



202.1400, 23.1530, 4.4090



199.7380, 15.1770, -5.2310



196.4790, -26.4540, -5.1580



199.3650, -16.9650, 4.5950

Sweetspot

The Sweet Spot groups the original color and five complimentary colors.



202.1400, 23.1530, 4.4090



246.2460, 8.1150, 1.6110



200.7330, 14.7140, 19.6900



122.2780, 5.0890, 1.3850



0.0000, 0.0000, 0.0000



128.0000, -0.0000, -0.0000

Same Dimension

The Same Dimension uses a secret algorithm to generate beautiful new colors.



202.1400, 23.1530, 4.4090



221.2720, 31.5890, 5.7090



214.4670, 17.3780, -6.5740



108.3490, 6.3270, 0.9750



75.2400, 96.5090, 18.5970



21.7060, 27.3710, 5.0590

Inverse Universe

The Inverse Universe completely reimagines the original color for something new.



208.8600, -23.1530, -4.4090



230.3150, -31.8640, -6.2320



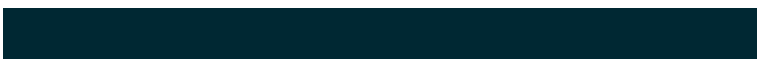
196.5330, -17.3780, 6.5740



109.6510, -6.3270, -0.9750



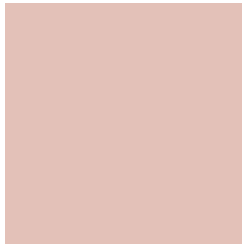
103.1730, -96.2340, -18.0740



29.2940, -27.3710, -5.0590

Previews

White Background



This preview shows how the YIQ color 202.1400, 23.1530, 4.4090 looks on a white background.

Color Contrast Check

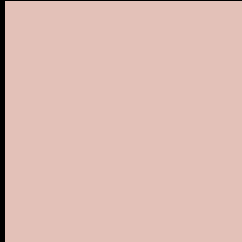
Large Text (above 18pt) WCAG AA × Fail

Any Text WCAG AA × Fail

Large Text (above 18pt) WCAG AAA × Fail

Any Text WCAG AAA × Fail

Black Background



This preview shows how the YIQ color 202.1400, 23.1530, 4.4090 looks on a black background.

Color Contrast Check

Large Text (above 18pt) WCAG AA ✓ Pass

Any Text WCAG AA ✓ Pass

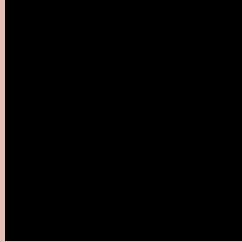
Large Text (above 18pt) WCAG AAA ✓ Pass

Any Text WCAG AAA ✓ Pass

If you want to check with other color combinations, try the [Color Contrast Checker](#).

YIQ 202.1400, 23.1530, 4.4090

Background



This preview shows how black text looks on a background with the YIQ color 202.1400, 23.1530, 4.4090.



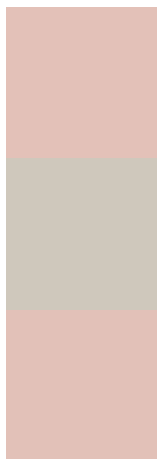
This preview shows how white text looks on a background with the YIQ color 202.1400, 23.1530,

4.4090.

Color Blindness Simulation

Color vision deficiency is a very complex topic, and I could not describe the different causes any better than Wikipedia does, so if you want to learn more, you should check out their [article about color blindness](#).

Dichromacy



Original Color

202.1400, 23.1530, 4.4090

Protanopia

200.7250, 8.0240, -2.2480

Deuteranopia

201.8410, 22.5570, 4.1970



Tritanopia

203.6700, 19.0250, 13.1450

Trichromacy



Original Color

202.1400, 23.1530, 4.4090

Protanomaly

200.9430, 13.3420, 0.4940

Deuteranomaly

201.8410, 22.5570, 4.1970

Tritanomaly

203.0460, 20.7220, 9.9220

Monochromacy



Original Color

202.1400, 23.1530, 4.4090

Achromatopsia

202.0000, -0.0000, 0.0000

Achromatomaly

202.1320, 8.4360, 1.3000

CSS Examples

Text

The CSS property to change the color of the text to YIQ 202.1400, 23.1530, 4.4090 is called "color". The color property can be set on classes, ids or directly on the HTML element.

This example shows how text in the color `rgb(227, 193, 184)` looks like.

```
.text, #text, p{  
    color:rgb(227, 193, 184)  
}
```

If you want to add a text shadow in that color use the text-shadow property, you can generate a text shadow directly with our [CSS Text Shadow Generator](#).

Here you see how black text with a 4 pixel rgb(227, 193, 184) colored shadow looks like.

```
.shadow{ text-shadow: 4px 4px 2px rgb(227, 193, 184) }
```

Border

The CSS property to change the border of an element to YIQ 202.1400, 23.1530, 4.4090 is called "border". The border property can be set on classes, ids or directly on the HTML element.

This example shows the color as border, it can be applied via the CSS property "border" or "border-color".

```
.border, #border, table{ border:4px solid rgb(227, 193, 184) }
```


If only the border color should be changed use the property `border-color`.

```
.border{ border-color:rgb(227, 193, 184) }
```

If you want to add a box shadow in that color use:

Here you see how a box with a 4 pixel `rgb(227, 193, 184)` colored shadow looks like.

```
.boxshadow{ -moz-box-shadow:4px 4px 4px  
4px rgb(227, 193, 184); -webkit-box-  
shadow:4px 4px 4px 4px rgb(227, 193, 184);  
box-shadow:4px 4px 4px 4px rgb(227, 193,  
184) }
```

Background

The CSS property to change the background color of an element to YIQ 202.1400, 23.1530, 4.4090 is called "background". The background property can be set on classes, ids or directly on the HTML element.

```
.background, #background, body{  
background: rgb(227, 193, 184) }
```

If only the background color should be changed can be used:

```
.background{ background-color: rgb(227,  
193, 184) }
```

This example shows the color as background, it is applied via the CSS property "background".

To optimize and compress your CSS code, you can use our [online CSS compressor and optimizer](#) based on csstidy. If you want to create a linear or radial gradient as background or border, check our [CSS Gradient Generator](#).

Hey! You found this booklet interesting? Support Converting Colors with the new Membership Option!

The pro membership hides all ads, plus gives you double the colors in the color bucket, and more awesome pro features!

[Learn more, Memberships starting at \\$2.50/m!](#)

**Follow me
on Twitter!**

@ConvertingColor