

Converting Colors

YIQ(202.4710, 20.7230, 4.3950)

Have a look what the booklet for
YIQ(202.4710, 20.7230, 4.3950)
contains.

YIQ(202.4710, 20.7230, 4.3950)	3
<i>Conversions</i>	4
<i>Details</i>	6
<i>Harmonies</i>	12
<i>Previews</i>	24
<i>Color Blindness Simulation</i>	28
<i>CSS Examples</i>	31

Color

**YIQ(202.4710, 20.7230,
4.3950)**

Conversions

Conversions Part 1

Format	Color
Hex	E1C2BB
RGB	225, 194, 187
RGB Percent	88%, 76%, 73%
CMY	0.1176, 0.2392, 0.2666
CMYK	0.00, 0.14, 0.17, 0.12
HSL	11°, 39%, 81%
HSV	11°, 17%, 88%
XYZ	59.3178, 58.1770, 55.1292
YIQ	202.4710, 20.7230, 4.3950

Conversions

Conversions Part 2

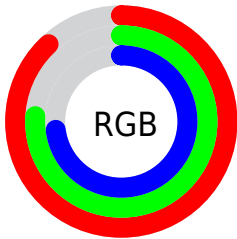
Format	Color
R _Y B	225, 196, 187
Decimal	14795451
CIE Lab	80.84, 9.88, 7.55
CIE LCh	81, 12.441, 37.390
Yxy	58.1770, 0.3436, 0.3370
Android (android.graphics.Color)	4292985531 (0xFFE1C2BB)
YUV	202.4710, -7.6272, 19.7579
Hunter-Lab	76.2738, 5.3393, 10.5381

Details

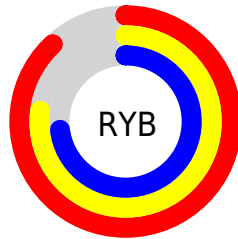
The YIQ color $202.4710, 20.7230, 4.3950$ is a light color, and the websafe version is hex FFCCCC . A complement of this color would be $209.5290, -20.7230, -4.3950$, and the grayscale version is $203.0000, 0.0000, -0.0000$.

A 20% lighter version of the original color is $251.2840, 4.9520, -1.6400$, and $147.9870, 19.2100, 4.2820$ is the 20% darker color. If you saturate the color by 10%, you get $189.3970, 32.7350, 6.9670$, and if you desaturate by 10%, it is $215.6590, 8.3900, 2.1340$.

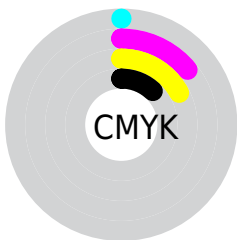
Distribution



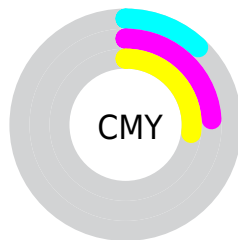
- Red (88%)
- Green (76%)
- Blue (73%)



- Red (88%)
- Yellow (77%)
- Blue (73%)



- Cyan (0%)
- Magenta (14%)
- Yellow (17%)
- Black (12%)



- Cyan (12%)
- Magenta (24%)
- Yellow (27%)

Brightness & Saturation Gradients

These gradients show how the YIQ color 202.4710, 20.7230, 4.3950 changes by changing the brightness by 10 percent. The first figure shows a shift by +10% for each color and the second figure -10%.

Similar to the brightness gradients but the following saturation gradients show a change of the YIQ color 202.4710, 20.7230, 4.3950 by changing the saturation by 10% instead.

■ 202.4710, 20.7230,
4.3950

■ 202.4710, 20.7230,
4.3950

255.0000, -0.0000,
-0.0000

■ 175.1720, 20.1270,
4.1830

■ 251.2840, 4.9520,
-1.6400

■ 147.9870, 19.2100,
4.2820

■ 122.6880, 18.6140,
4.0700

■ 97.3890, 18.0180,
3.8580

■ 73.7910, 16.8260,
3.4340

■ 51.1930, 15.6340,
3.0100

■ 29.7090, 14.1210,

2.8970

■ 7.1760, 14.3040,
5.0880

■ 0.0000, 0.0000,
0.0000

■ 202.4710, 20.7230,
4.3950

■ 202.4710, 20.7230,
4.3950

■ 189.3970, 32.7350,
6.9670

■ 215.6590, 8.3900,
2.1340

■ 175.6220, 45.3430,
9.7510

■ 229.3200, -3.8970,
-0.9610

■ 162.5480, 57.3550,
12.3230

■ 242.5080,
-16.2300, -3.2220

■ 148.7730, 69.9630,
15.1070

■ 246.0300,
-17.8800, -6.3600

■ 135.6990, 81.9750,
17.6790

■ 122.5110, 94.3080,
19.9400

■ 108.8500,
106.5950, 23.0350

■ 95.6620, 118.9280,
25.2960

■ 91.3420, 122.8250,
26.2570

Harmonies

Analogous

The Analogous color harmony consists of three colors that are next to each other on the color wheel.



203.1380, 17.4670, 8.3390



202.4710, 20.7230, 4.3950



201.6400, 18.5690, -0.6230

Triad

The Triadic color harmony groups three colors that are evenly spaced from another and form a triangle on the color wheel.



202.4710, 20.7230, 4.3950



197.4020, -10.3600, -10.4880



200.9310, -12.7470, 5.2450

Complementary

The Complementary color scheme is a pair of colors which are on the opposite of each other on the color wheel.



202.4710, 20.7230, 4.3950



209.5290, -20.7230, -4.3950

Split Complementary

Split-complementary colors differ from the complementary color scheme. The scheme consists of three colors, the original color and two neighbors of the complement color.



198.5770, -20.6780, 0.2980



202.4710, 20.7230, 4.3950



196.9650, -19.2550, -8.9750

Square

The Square scheme is like the rectangle color scheme, but the four colors are evenly spaced on the color wheel.



202.4710, 20.7230, 4.3950



198.5020, 1.1020, -8.9620



197.3330, -23.1070, -5.2430



202.4980, -1.1020, 8.9620

Rectangle

The Rectangle color scheme consists of four colors that form a rectangle on the color wheel.



202.4710, 20.7230, 4.3950



200.1940, 13.8930, -3.9870



197.3330, -23.1070, -5.2430



200.0230, -16.0020, 3.6620

Sweetspot

The Sweet Spot groups the original color and five complimentary colors.



202.4710, 20.7230, 4.3950



247.6480, 6.9230, 1.1870



201.8960, 12.6970, 17.6970



122.9790, 4.4930, 1.1730



0.0000, 0.0000, 0.0000



128.0000, -0.0000, -0.0000

Same Dimension

The Same Dimension uses a secret algorithm to generate beautiful new colors.



202.4710, 20.7230, 4.3950



224.5320, 27.9210, 6.1050



213.6240, 15.4980, -5.5420



105.4630, 6.0060, 1.2860



71.4080, 96.0960, 20.5760



19.6350, 26.1330, 5.4690

Inverse Universe

The Inverse Universe completely reimagines the original color for something new.



209.5290, -20.7230, -4.3950



234.4680, -27.9210, -6.1050



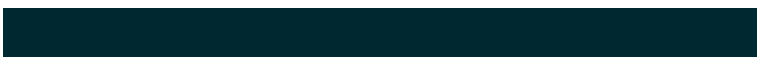
198.3760, -15.4980, 5.5420



107.5370, -6.0060, -1.2860



104.5920, -96.0960, -20.5760



28.9520, -26.4080, -5.9920

Previews

White Background



This preview shows how the YIQ color 202.4710, 20.7230, 4.3950 looks on a white background.

Color Contrast Check

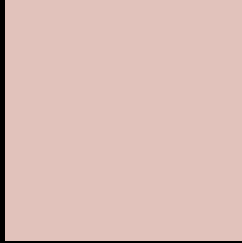
Large Text (above 18pt) WCAG AA × Fail

Any Text WCAG AA × Fail

Large Text (above 18pt) WCAG AAA × Fail

Any Text WCAG AAA × Fail

Black Background



This preview shows how the YIQ color 202.4710, 20.7230, 4.3950 looks on a black background.

Color Contrast Check

Large Text (above 18pt) WCAG AA ✓ Pass

Any Text WCAG AA ✓ Pass

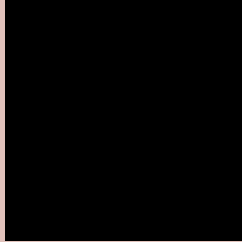
Large Text (above 18pt) WCAG AAA ✓ Pass

Any Text WCAG AAA ✓ Pass

If you want to check with other color combinations, try the [Color Contrast Checker](#).

YIQ 202.4710, 20.7230, 4.3950

Background



This preview shows how black text looks on a background with the YIQ color 202.4710, 20.7230, 4.3950.



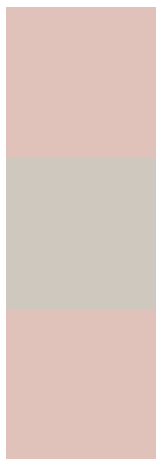
This preview shows how white text looks on a background with the YIQ color 202.4710, 20.7230,

4.3950.

Color Blindness Simulation

Color vision deficiency is a very complex topic, and I could not describe the different causes any better than Wikipedia does, so if you want to learn more, you should check out their [article about color blindness](#).

Dichromacy



Original Color

202.4710, 20.7230, 4.3950

Protanopia

200.9530, 7.3820, -1.6260

Deuteranopia

202.4710, 20.7230, 4.3950



Tritanopia

203.4740, 16.6410, 12.2970

Trichromacy



Original Color

202.4710, 20.7230, 4.3950

Protanomaly

201.7580, 12.4250, 0.5930

Deuteranomaly

202.4710, 20.7230, 4.3950

Tritanomaly

202.9640, 18.0170, 9.3850

Monochromacy



Original Color

202.4710, 20.7230, 4.3950

Achromatopsia

202.0000, -0.0000, 0.0000

Achromatomaly

202.0610, 7.1980, 1.7100

CSS Examples

Text

The CSS property to change the color of the text to YIQ 202.4710, 20.7230, 4.3950 is called "color". The color property can be set on classes, ids or directly on the HTML element.

This example shows how text in the color `rgb(225, 194, 187)` looks like.

```
.text, #text, p{  
    color:rgb(225, 194, 187)  
}
```

If you want to add a text shadow in that color use the text-shadow property, you can generate a text shadow directly with our [CSS Text Shadow Generator](#).

Here you see how black text with a 4 pixel rgb(225, 194, 187) colored shadow looks like.

```
.shadow{ text-shadow: 4px 4px 2px rgb(225, 194, 187) }
```

Border

The CSS property to change the border of an element to YIQ 202.4710, 20.7230, 4.3950 is called "border". The border property can be set on classes, ids or directly on the HTML element.

This example shows the color as border, it can be applied via the CSS property "border" or "border-color".

```
.border, #border, table{ border:4px solid rgb(225, 194, 187) }
```


If only the border color should be changed use the property `border-color`.

```
.border{ border-color:rgb(225, 194, 187) }
```

If you want to add a box shadow in that color use:

Here you see how a box with a 4 pixel `rgb(225, 194, 187)` colored shadow looks like.

```
.boxshadow{ -moz-box-shadow:4px 4px 4px 4px rgb(225, 194, 187); -webkit-box-shadow:4px 4px 4px 4px rgb(225, 194, 187); box-shadow:4px 4px 4px 4px rgb(225, 194, 187) }
```

Background

The CSS property to change the background color of an element to YIQ 202.4710, 20.7230, 4.3950 is called "background". The background property can be set on classes, ids or directly on the HTML element.

```
.background, #background, body{  
background: rgb(225, 194, 187) }
```

If only the background color should be changed can be used:

```
.background{ background-color: rgb(225,  
194, 187) }
```

This example shows the color as background, it is applied via the CSS property "background".

To optimize and compress your CSS code, you can use our [online CSS compressor and optimizer](#) based on csstidy. If you want to create a linear or radial gradient as background or border, check our [CSS Gradient Generator](#).

Hey! You found this booklet interesting? Support Converting Colors with the new Membership Option!

The pro membership hides all ads, plus gives you double the colors in the color bucket, and more awesome pro features!

[Learn more, Memberships starting at \\$2.50/m!](#)

**Follow me
on Twitter!**

@ConvertingColor