

Converting Colors

YIQ(202.7890, 11.1400, 7.3640)

Have a look what the booklet for
YIQ(202.7890, 11.1400, 7.3640)
contains.

YIQ(202.7890, 11.1400, 7.3640)	3
<i>Conversions</i>	4
<i>Details</i>	6
<i>Harmonies</i>	12
<i>Previews</i>	24
<i>Color Blindness Simulation</i>	28
<i>CSS Examples</i>	31

Color

**YIQ(202.7890, 11.1400,
7.3640)**

Conversions

Conversions Part 1

Format	Color
Hex	DAC3CB
RGB	218, 195, 203
RGB Percent	85%, 76%, 80%
CMY	0.1450, 0.2353, 0.2039
CMYK	0.00, 0.11, 0.07, 0.15
HSL	339°, 24%, 81%
HSV	339°, 11%, 85%
XYZ	59.2116, 58.2459, 64.6278
YIQ	202.7890, 11.1400, 7.3640

Conversions

Conversions Part 2

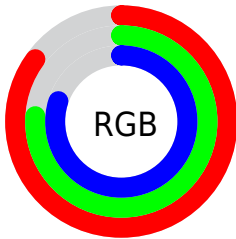
Format	Color
R _Y B	218, 195, 203
Decimal	14336971
CIE Lab	80.88, 9.46, -1.05
CIE LCh	81, 9.523, 353.648
Yxy	58.2459, 0.3252, 0.3199
Android (android.graphics.Color)	4292527051 (0xFFDAC3CB)
YUV	202.7890, 0.1040, 13.3400
Hunter-Lab	76.3190, 4.9297, 3.2159

Details

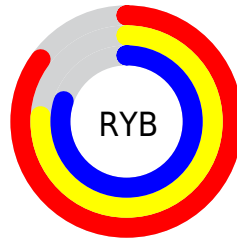
The YIQ color $202.7890, 11.1400, 7.3640$ is a light color, and the websafe version is hex `CCCCCC`. A complement of this color would be $210.2110, -11.1400, -7.3640$, and the grayscale version is $203.0000, 0.0000, -0.0000$.

A 20% lighter version of the original color is $253.2390, 0.8250, 1.5690$, and $148.4900, 10.5440, 7.1520$ is the 20% darker color. If you saturate the color by 10%, you get $188.2790, 21.6840, 14.5160$, and if you desaturate by 10%, it is $217.2990, 0.5960, 0.2120$.

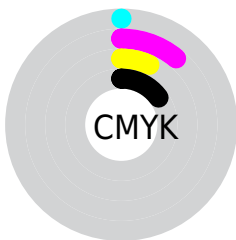
Distribution



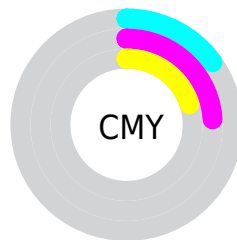
- Red (85%)
- Green (76%)
- Blue (80%)



- Red (85%)
- Yellow (76%)
- Blue (80%)



- Cyan (0%)
- Magenta (11%)
- Yellow (7%)
- Black (15%)



- Cyan (15%)
- Magenta (24%)
- Yellow (20%)

Brightness & Saturation Gradients

These gradients show how the YIQ color 202.7890, 11.1400, 7.3640 changes by changing the brightness by 10 percent. The first figure shows a shift by +10% for each color and the second figure -10%.

Similar to the brightness gradients but the following saturation gradients show a change of the YIQ color 202.7890, 11.1400, 7.3640 by changing the saturation by 10% instead.

■ 202.7890, 11.1400,
7.3640

■ 202.7890, 11.1400,
7.3640

■ 255.0000, -0.0000,
-0.0000

■ 175.4900, 10.5440,
7.1520

■ 253.2390, 0.8250,
1.5690

■ 148.4900, 10.5440,
7.1520

■ 123.0770, 10.2690,
6.6290

■ 97.7780, 9.6730,
6.4170

■ 74.4790, 9.0770,
6.2050

■ 51.1800, 8.4810,
5.9930

■ 30.4680, 7.6100,

5.2580

■ 7.2620, 11.1860,
6.5300

■ 0.0000, 0.0000,
0.0000

■ 202.7890, 11.1400,
7.3640

■ 202.7890, 11.1400,
7.3640

■ 188.2790, 21.6840,
14.5160

■ 217.2990, 0.5960,
0.2120

■ 173.7690, 32.2280,
21.6680

■ 231.8090, -9.9480,
-6.9400

■ 159.7320, 42.8180,
27.9860

■ 242.9110,
-19.1630, -10.6430

■ 145.2220, 53.3620,
35.1380

■ 243.9370,
-22.0520, -7.8440

■ 130.7120, 63.9060,
42.2900

■ 116.2020, 74.4500,
49.4420

■ 101.6920, 84.9940,
56.5940

■ 87.6550, 95.5840,
62.9120

■ 73.8460, 105.5320,
69.8520

Harmonies

Analogous

The Analogous color harmony consists of three colors that are next to each other on the color wheel.



202.1950, 4.1250, 7.8450



202.7890, 11.1400, 7.3640



202.3610, 15.2210, 4.9890

Triad

The Triadic color harmony groups three colors that are evenly spaced from another and form a triangle on the color wheel.



202.7890, 11.1400, 7.3640



199.3500, 4.5860, -6.0220



199.2630, -16.9180, -1.7660

Complementary

The Complementary color scheme is a pair of colors which are on the opposite of each other on the color wheel.



202.7890, 11.1400, 7.3640



210.2110, -11.1400, -7.3640

Split Complementary

Split-complementary colors differ from the complementary color scheme. The scheme consists of three colors, the original color and two neighbors of the complement color.



198.1550, -16.7340, -5.1020



202.7890, 11.1400, 7.3640



198.8050, -4.1250, -7.8450

Square

The Square scheme is like the rectangle color scheme, but the four colors are evenly spaced on the color wheel.



202.7890, 11.1400, 7.3640



200.4650, 11.6920, -2.6440



197.9120, -11.7360, -7.5760



200.2360, -12.2880, 2.4320

Rectangle

The Rectangle color scheme consists of four colors that form a rectangle on the color wheel.



202.7890, 11.1400, 7.3640



202.0790, 15.9550, 2.6990



197.9120, -11.7360, -7.5760



198.4370, -17.4680, -2.8120

Sweetspot

The Sweet Spot groups the original color and five complimentary colors.



202.7890, 11.1400, 7.3640



249.7340, 3.8050, 2.6290



202.1070, 1.5570, 10.3330



124.0220, 2.9340, 1.8940



0.0000, 0.0000, 0.0000



128.0000, -0.0000, -0.0000

Same Dimension

The Same Dimension uses a secret algorithm to generate beautiful new colors.



202.7890, 11.1400, 7.3640



233.1210, 16.1370, 10.4170



203.6380, 12.8830, 3.3070



102.7450, 5.2720, 3.5760



58.5670, 83.8480, 55.3360



15.5780, 22.2800, 14.7280

Inverse Universe

The Inverse Universe completely reimagines the original color for something new.



202.7890, 11.1400, 7.3640



233.1210, 16.1370, 10.4170



209.3620, -12.8830, -3.3070



102.7450, 5.2720, 3.5760



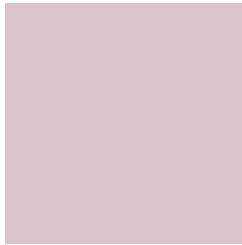
58.5670, 83.8480, 55.3360



15.5780, 22.2800, 14.7280

Previews

White Background



This preview shows how the YIQ color 202.7890, 11.1400, 7.3640 looks on a white background.

Color Contrast Check

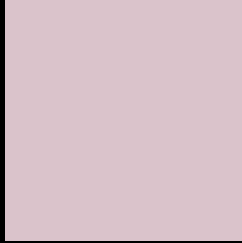
Large Text (above 18pt) WCAG AA × Fail

Any Text WCAG AA × Fail

Large Text (above 18pt) WCAG AAA × Fail

Any Text WCAG AAA × Fail

Black Background



This preview shows how the YIQ color 202.7890, 11.1400, 7.3640 looks on a black background.

Color Contrast Check

Large Text (above 18pt) WCAG AA ✓ Pass

Any Text WCAG AA ✓ Pass

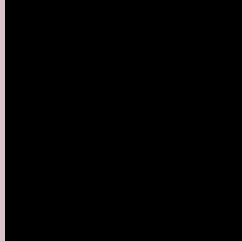
Large Text (above 18pt) WCAG AAA ✓ Pass

Any Text WCAG AAA ✓ Pass

If you want to check with other color combinations, try the [Color Contrast Checker](#).

YIQ 202.7890, 11.1400, 7.3640

Background



This preview shows how black text looks on a background with the YIQ color 202.7890, 11.1400, 7.3640.



This preview shows how white text looks on a background with the YIQ color 202.7890, 11.1400,

7.3640.

Color Blindness Simulation

Color vision deficiency is a very complex topic, and I could not describe the different causes any better than Wikipedia does, so if you want to learn more, you should check out their [article about color blindness](#).

Dichromacy



Original Color

202.7890, 11.1400, 7.3640

Protanopia

201.5810, -0.1380, 2.5020

Deuteranopia

203.0880, 11.7360, 7.5760



Tritanopia

203.1850, 10.0850, 9.9650

Trichromacy



Original Color

202.7890, 11.1400, 7.3640

Protanomaly

201.7880, 3.7130, 4.2970

Deuteranomaly

203.0880, 11.7360, 7.5760

Tritanomaly

202.9570, 10.7270, 9.3430

Monochromacy



Original Color

202.7890, 11.1400, 7.3640

Achromatopsia

203.0000, 0.0000, -0.0000

Achromatomaly

202.7340, 3.8050, 2.6290

CSS Examples

Text

The CSS property to change the color of the text to YIQ 202.7890, 11.1400, 7.3640 is called "color". The color property can be set on classes, ids or directly on the HTML element.

This example shows how text in the color `rgb(218, 195, 203)` looks like.

```
.text, #text, p{  
    color:rgb(218, 195, 203)  
}
```

If you want to add a text shadow in that color use the text-shadow property, you can generate a text shadow directly with our [CSS Text Shadow Generator](#).

Here you see how black text with a 4 pixel rgb(218, 195, 203) colored shadow looks like.

```
.shadow{ text-shadow: 4px 4px 2px rgb(218, 195, 203) }
```

Border

The CSS property to change the border of an element to YIQ 202.7890, 11.1400, 7.3640 is called "border". The border property can be set on classes, ids or directly on the HTML element.

This example shows the color as border, it can be applied via the CSS property "border" or "border-color".

```
.border, #border, table{ border:4px solid rgb(218, 195, 203) }
```


If only the border color should be changed use the property `border-color`.

```
.border{ border-color:rgb(218, 195, 203) }
```

If you want to add a box shadow in that color use:

Here you see how a box with a 4 pixel `rgb(218, 195, 203)` colored shadow looks like.

```
.boxshadow{ -moz-box-shadow:4px 4px 4px 4px rgb(218, 195, 203); -webkit-box-shadow:4px 4px 4px 4px rgb(218, 195, 203); box-shadow:4px 4px 4px 4px rgb(218, 195, 203) }
```

Background

The CSS property to change the background color of an element to YIQ 202.7890, 11.1400, 7.3640 is called "background". The background property can be set on classes, ids or directly on the HTML element.

```
.background, #background, body{  
background: rgb(218, 195, 203) }
```

If only the background color should be changed can be used:

```
.background{ background-color: rgb(218,  
195, 203) }
```

This example shows the color as background, it is applied via the CSS property "background".

To optimize and compress your CSS code, you can use our [online CSS compressor and optimizer](#) based on csstidy. If you want to create a linear or radial gradient as background or border, check our [CSS Gradient Generator](#).

Hey! You found this booklet interesting? Support Converting Colors with the new Membership Option!

The pro membership hides all ads, plus gives you double the colors in the color bucket, and more awesome pro features!

[Learn more, Memberships starting at \\$2.50/m!](#)

**Follow me
on Twitter!**

@ConvertingColor