

Converting Colors

YIQ(202.8240, 21.2270, 6.2750)

Have a look what the booklet for
YIQ(202.8240, 21.2270, 6.2750)
contains.

YIQ(202.8240, 21.2270, 6.2750)	3
<i>Conversions</i>	4
<i>Details</i>	6
<i>Harmonies</i>	12
<i>Previews</i>	24
<i>Color Blindness Simulation</i>	28
<i>CSS Examples</i>	31

Color

**YIQ(202.8240, 21.2270,
6.2750)**

Conversions

Conversions Part 1

Format	Color
Hex	E3C1BE
RGB	227, 193, 190
RGB Percent	89%, 76%, 75%
CMY	0.1097, 0.2432, 0.2548
CMYK	0.00, 0.15, 0.16, 0.11
HSL	5°, 40%, 82%
HSV	5°, 16%, 89%
XYZ	60.0484, 58.1864, 56.7941
YIQ	202.8240, 21.2270, 6.2750

Conversions

Conversions Part 2

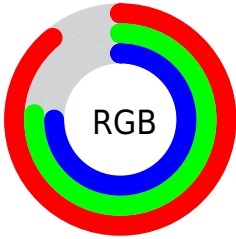
Format	Color
R _Y B	227, 193, 190
Decimal	14926270
CIE Lab	80.84, 11.61, 5.98
CIE LCh	81, 13.057, 27.234
Yxy	58.1864, 0.3431, 0.3324
Android (android.graphics.Color)	4293116350 (0xFFE3C1BE)
YUV	202.8240, -6.3222, 21.2024
Hunter-Lab	76.2800, 7.0269, 9.2518

Details

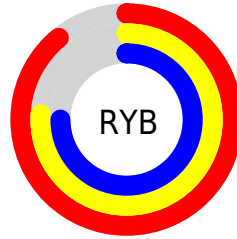
The YIQ color $202.8240, 21.2270, 6.2750$ is a light color, and the websafe version is hex FFCCCC . A complement of this color would be $214.1760, -21.2270, -6.2750$, and the grayscale version is $203.0000, 0.0000, -0.0000$.

A 20% lighter version of the original color is $250.4520, 4.5390, 0.3390$, and $148.3400, 19.7140, 6.1620$ is the 20% darker color. If you saturate the color by 10%, you get $187.8750, 34.3850, 10.1050$, and if you desaturate by 10%, it is $217.7730, 8.0690, 2.4450$.

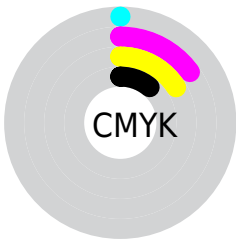
Distribution



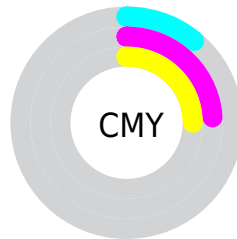
- Red (89%)
- Green (76%)
- Blue (75%)



- Red (89%)
- Yellow (76%)
- Blue (75%)



- Cyan (0%)
- Magenta (15%)
- Yellow (16%)
- Black (11%)



- Cyan (11%)
- Magenta (24%)
- Yellow (25%)

Brightness & Saturation Gradients

These gradients show how the YIQ color 202.8240, 21.2270, 6.2750 changes by changing the brightness by 10 percent. The first figure shows a shift by +10% for each color and the second figure -10%.

Similar to the brightness gradients but the following saturation gradients show a change of the YIQ color 202.8240, 21.2270, 6.2750 by changing the saturation by 10% instead.

■ 202.8240, 21.2270,
6.2750

■ 202.8240, 21.2270,
6.2750

255.0000, -0.0000,
-0.0000

■ 175.5250, 20.6310,
6.0630

■ 250.4520, 4.5390,
0.3390

■ 148.3400, 19.7140,
6.1620

■ 122.6280, 18.8430,
5.4270

■ 97.4430, 17.9260,
5.5260

■ 73.8450, 16.7340,
5.1020

■ 51.2470, 15.5420,
4.6780

■ 29.6490, 14.3500,

4.2540

■ 7.7740, 15.4960,
5.5120

■ 0.0000, 0.0000,
0.0000

■ 202.8240, 21.2270,
6.2750

■ 202.8240, 21.2270,
6.2750

■ 187.8750, 34.3850,
10.1050

■ 217.7730, 8.0690,
2.4450

■ 173.0400, 47.2220,
14.2460

■ 232.6080, -4.7680,
-1.6960

■ 158.0910, 60.3800,
18.0760

■ 246.6280,
-16.6880, -5.9360

■ 143.1420, 73.5380,
21.9060

■ 128.8940, 86.1000,
25.5240

■ 113.9450, 99.2580,
29.3540

■ 98.9960, 112.4160,
33.1840

■ 84.0470, 125.5740,
37.0140

■ 78.4390, 130.3420,
38.7100

Harmonies

Analogous

The Analogous color harmony consists of three colors that are next to each other on the color wheel.



203.5940, 16.1830, 9.5830



202.8240, 21.2270, 6.2750



202.0640, 20.3110, 0.8470

Triad

The Triadic color harmony groups three colors that are evenly spaced from another and form a triangle on the color wheel.



202.8240, 21.2270, 6.2750



197.5550, -6.4170, -10.3610



199.8380, -16.9190, 3.7610

Complementary

The Complementary color scheme is a pair of colors which are on the opposite of each other on the color wheel.



202.8240, 21.2270, 6.2750



214.1760, -21.2270, -6.2750

Split Complementary

Split-complementary colors differ from the complementary color scheme. The scheme consists of three colors, the original color and two neighbors of the complement color.



198.1420, -23.8870, -2.1190



202.8240, 21.2270, 6.2750



196.8080, -17.3750, -10.0070

Square

The Square scheme is like the rectangle color scheme, but the four colors are evenly spaced on the color wheel.



202.8240, 21.2270, 6.2750



198.7690, 4.7240, -8.5240



196.9800, -23.6110, -7.1230



201.9320, -5.3200, 8.3120

Rectangle

The Rectangle color scheme consists of four colors that form a rectangle on the color wheel.



202.8240, 21.2270, 6.2750



200.9880, 17.4690, -2.7150



196.9800, -23.6110, -7.1230



199.1150, -19.2570, 2.0790

Sweetspot

The Sweet Spot groups the original color and five complimentary colors.



202.8240, 21.2270, 6.2750



246.4740, 7.4730, 2.2330



205.0530, 10.8170, 18.7290



122.3920, 4.7680, 1.6960



0.0000, 0.0000, 0.0000



128.0000, -0.0000, -0.0000

Same Dimension

The Same Dimension uses a secret algorithm to generate beautiful new colors.



202.8240, 21.2270, 6.2750



221.5970, 29.2960, 8.7200



213.3900, 16.2770, -3.1390



107.1750, 6.8770, 2.0210



61.7390, 102.8340, 30.6260



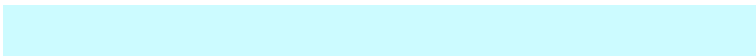
17.5970, 29.2960, 8.7200

Inverse Universe

The Inverse Universe completely reimagines the original color for something new.



214.1760, -21.2270, -6.2750



237.4030, -29.2960, -8.7200



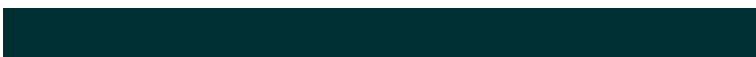
203.6100, -16.2770, 3.1390



110.8250, -6.8770, -2.0210



116.6740, -102.5590, -30.1030



33.4030, -29.2960, -8.7200

Previews

White Background



This preview shows how the YIQ color 202.8240, 21.2270, 6.2750 looks on a white background.

Color Contrast Check

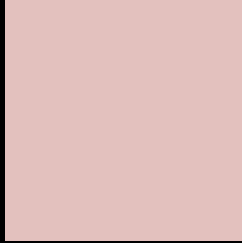
Large Text (above 18pt) WCAG AA × Fail

Any Text WCAG AA × Fail

Large Text (above 18pt) WCAG AAA × Fail

Any Text WCAG AAA × Fail

Black Background



This preview shows how the YIQ color 202.8240, 21.2270, 6.2750 looks on a black background.

Color Contrast Check

Large Text (above 18pt) WCAG AA ✓ Pass

Any Text WCAG AA ✓ Pass

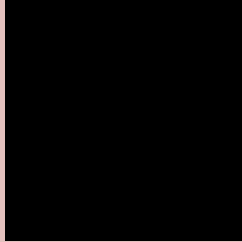
Large Text (above 18pt) WCAG AAA ✓ Pass

Any Text WCAG AAA ✓ Pass

If you want to check with other color combinations, try the [Color Contrast Checker](#).

YIQ 202.8240, 21.2270, 6.2750

Background



This preview shows how black text looks on a background with the YIQ color 202.8240, 21.2270, 6.2750.



This preview shows how white text looks on a background with the YIQ color 202.8240, 21.2270,

6.2750.

Color Blindness Simulation

Color vision deficiency is a very complex topic, and I could not describe the different causes any better than Wikipedia does, so if you want to learn more, you should check out their [article about color blindness](#).

Dichromacy



Original Color

202.8240, 21.2270, 6.2750

Protanopia

201.1100, 5.5020, -0.5940

Deuteranopia

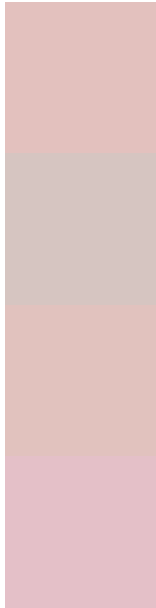
202.5140, 19.1640, 5.1160



Tritanopia

203.9580, 18.1540, 12.4100

Trichromacy



Original Color

202.8240, 21.2270, 6.2750

Protanomaly

201.6270, 11.4160, 2.3600

Deuteranomaly

202.8130, 19.7600, 5.3280

Tritanomaly

203.6760, 18.8880, 10.1200

Monochromacy



Original Color

202.8240, 21.2270, 6.2750

Achromatopsia

203.0000, 0.0000, -0.0000

Achromatomaly

202.7730, 8.0690, 2.4450

CSS Examples

Text

The CSS property to change the color of the text to YIQ 202.8240, 21.2270, 6.2750 is called "color". The color property can be set on classes, ids or directly on the HTML element.

This example shows how text in the color `rgb(227, 193, 190)` looks like.

```
.text, #text, p{  
    color:rgb(227, 193, 190)  
}
```

If you want to add a text shadow in that color use the text-shadow property, you can generate a text shadow directly with our [CSS Text Shadow Generator](#).

Here you see how black text with a 4 pixel rgb(227, 193, 190) colored shadow looks like.

```
.shadow{ text-shadow: 4px 4px 2px rgb(227, 193, 190) }
```

Border

The CSS property to change the border of an element to YIQ 202.8240, 21.2270, 6.2750 is called "border". The border property can be set on classes, ids or directly on the HTML element.

This example shows the color as border, it can be applied via the CSS property "border" or "border-color".

```
.border, #border, table{ border:4px solid rgb(227, 193, 190) }
```


If only the border color should be changed use the property border-color.

```
.border{ border-color:rgb(227, 193, 190) }
```

If you want to add a box shadow in that color use:

Here you see how a box with a 4 pixel rgb(227, 193, 190) colored shadow looks like.

```
.boxshadow{ -moz-box-shadow:4px 4px 4px  
4px rgb(227, 193, 190); -webkit-box-  
shadow:4px 4px 4px 4px rgb(227, 193, 190);  
box-shadow:4px 4px 4px 4px rgb(227, 193,  
190) }
```

Background

The CSS property to change the background color of an element to YIQ 202.8240, 21.2270, 6.2750 is called "background". The background property can be set on classes, ids or directly on the HTML element.

```
.background, #background, body{  
background: rgb(227, 193, 190) }
```

If only the background color should be changed can be used:

```
.background{ background-color: rgb(227,  
193, 190) }
```

This example shows the color as background, it is applied via the CSS property "background".

To optimize and compress your CSS code, you can use our [online CSS compressor and optimizer](#) based on csstidy. If you want to create a linear or radial gradient as background or border, check our [CSS Gradient Generator](#).

Hey! You found this booklet interesting? Support Converting Colors with the new Membership Option!

The pro membership hides all ads, plus gives you double the colors in the color bucket, and more awesome pro features!

[Learn more, Memberships starting at \\$2.50/m!](#)

**Follow me
on Twitter!**

@ConvertingColor