

# Converting Colors

YIQ(202.9310, 13.6160, 6.5440)

Have a look what the booklet for  
YIQ(202.9310, 13.6160, 6.5440)  
contains.

- YIQ(202.9310, 13.6160, 6.5440)** ..... 3
- Conversions*** ..... 4
- Details*** ..... 6
- Harmonies*** ..... 12
- Previews*** ..... 24
- Color Blindness Simulation*** ..... 28
- CSS Examples*** ..... 31

# **Color**

**YIQ(202.9310, 13.6160,  
6.5440)**

# Conversions

## Conversions Part 1

Format	Color
Hex	DCC3C7
RGB	220, 195, 199
RGB Percent	86%, 76%, 78%
CMY	0.1372, 0.2353, 0.2196
CMYK	0.00, 0.11, 0.10, 0.14
HSL	350°, 26%, 81%
HSV	350°, 11%, 86%
XYZ	59.3431, 58.3677, 62.1791
YIQ	202.9310, 13.6160, 6.5440

# Conversions

## Conversions Part 2

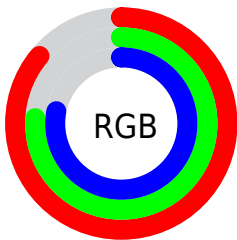
Format	Color
R <sub>Y</sub> B	220, 195, 199
Decimal	14468039
CIE Lab	80.94, 9.49, 1.21
CIE LCh	81, 9.567, 7.283
Yxy	58.3677, 0.3299, 0.3245
Android (android.graphics.Color)	4292658119 (0xFFDCC3C7)
YUV	202.9310, -1.9380, 14.9695
Hunter-Lab	76.3988, 4.9527, 5.2245

# Details

The YIQ color  $202.9310, 13.6160, 6.5440$  is a light color, and the websafe version is hex `CCCCCC`. A complement of this color would be  $212.0690, -13.6160, -6.5440$ , and the grayscale version is  $203.0000, 0.0000, -0.0000$ .

A 20% lighter version of the original color is  $253.2390, 0.8250, 1.5690$ , and  $148.6320, 13.0200, 6.3320$  is the 20% darker color. If you saturate the color by 10%, you get  $187.9650, 25.4440, 12.4520$ , and if you desaturate by 10%, it is  $217.8970, 1.7880, 0.6360$ .

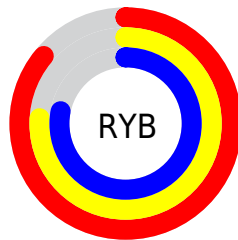
# Distribution



Red (86%)

Green (76%)

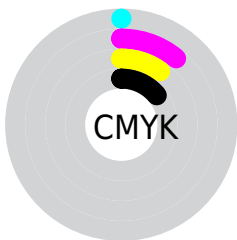
Blue (78%)



Red (86%)

Yellow (76%)

Blue (78%)

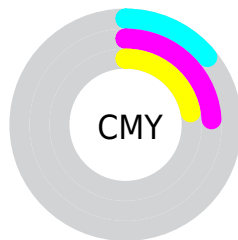


Cyan (0%)

Magenta (11%)

Yellow (10%)

Black (14%)



Cyan (14%)

Magenta (24%)

Yellow (22%)

# Brightness & Saturation Gradients

These gradients show how the YIQ color 202.9310, 13.6160, 6.5440 changes by changing the brightness by 10 percent. The first figure shows a shift by +10% for each color and the second figure -10%.

Similar to the brightness gradients but the following saturation gradients show a change of the YIQ color 202.9310, 13.6160, 6.5440 by changing the saturation by 10% instead.



202.9310, 13.6160,  
6.5440

202.9310, 13.6160,  
6.5440

255.0000, -0.0000,  
-0.0000

175.6320, 13.0200,  
6.3320

253.2390, 0.8250,  
1.5690

148.6320, 13.0200,  
6.3320

123.0340, 11.8280,  
5.9080

98.0340, 11.8280,  
5.9080

74.3220, 10.9570,  
5.1730

51.4360, 10.6360,  
5.4840

29.8380, 9.4440,

5.0600

■ 7.2900, 13.9830,  
5.3990

■ 0.0000, 0.0000,  
0.0000

■ 202.9310, 13.6160,  
6.5440

■ 202.9310, 13.6160,  
6.5440

■ 187.9650, 25.4440,  
12.4520

■ 217.8970, 1.7880,  
0.6360

■ 172.8850, 37.5930,  
18.0490

■ 232.9770,  
-10.3610, -4.9610

■ 157.9190, 49.4210,  
23.9570

■ 244.4210,  
-20.5390, -7.7310

■ 142.8390, 61.5700,  
29.5540

■ 244.5350,  
-20.8600, -7.4200

■ 127.8730, 73.3980,  
35.4620

■ 112.7930, 85.5470,  
41.0590

■ 97.8270, 97.3750,  
46.9670

■ 82.7470, 109.5240,  
52.5640

■ 69.7700, 119.8850,  
57.5250

# Harmonies

## Analogous

The Analogous color harmony consists of three colors that are next to each other on the color wheel.



203.0490, 7.4720, 7.7600



202.9310, 13.6160, 6.5440



202.4920, 16.2300, 3.2220

# Triad

The Triadic color harmony groups three colors that are evenly spaced from another and form a triangle on the color wheel.



202.9310, 13.6160, 6.5440



199.6700, 0.6890, -6.9830



199.8010, -15.4970, 0.0150

# Complementary

The Complementary color scheme is a pair of colors which are on the opposite of each other on the color wheel.



202.9310, 13.6160, 6.5440



212.0690, -13.6160, -6.5440

# Split Complementary

Split-complementary colors differ from the complementary color scheme. The scheme consists of three colors, the original color and two neighbors of the complement color.



198.4970, -17.6970, -4.1690



202.9310, 13.6160, 6.5440



198.6520, -8.0680, -7.9720

# Square

The Square scheme is like the rectangle color scheme, but the four colors are evenly spaced on the color wheel.



202.9310, 13.6160, 6.5440



200.4430, 8.7580, -4.5380



197.8840, -14.5330, -6.4450



200.9590, -9.9500, 4.1140



# Rectangle

The Rectangle color scheme consists of four colors that form a rectangle on the color wheel.



202.9310, 13.6160, 6.5440



201.7260, 15.4510, 0.8190



197.8840, -14.5330, -6.4450



199.3770, -17.2390, -1.4550

# Sweetspot

The Sweet Spot groups the original color and five complimentary colors.



202.9310, 13.6160, 6.5440



249.6200, 4.1260, 2.3180



204.1290, 4.4910, 12.2270



123.9080, 3.2550, 1.5830



0.0000, 0.0000, 0.0000



128.0000, -0.0000, -0.0000



# Same Dimension

The Same Dimension uses a secret algorithm to generate beautiful new colors.



202.9310, 13.6160, 6.5440



230.4480, 19.5300, 9.4980



207.1710, 12.7000, 1.1160



102.4030, 6.2350, 2.6430



54.9190, 94.1200, 45.3840



14.5520, 25.1690, 11.9290



# Inverse Universe

The Inverse Universe completely reimagines the original color for something new.



202.9310, 13.6160, 6.5440



230.4480, 19.5300, 9.4980



207.8290, -12.7000, -1.1160



102.4030, 6.2350, 2.6430



54.9190, 94.1200, 45.3840

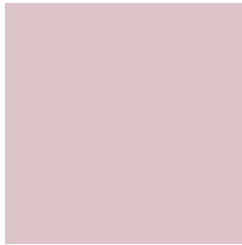


14.5520, 25.1690, 11.9290



# Previews

## White Background



This preview shows how the YIQ color 202.9310, 13.6160, 6.5440 looks on a white background.

## Color Contrast Check

Large Text (above 18pt) WCAG AA × Fail

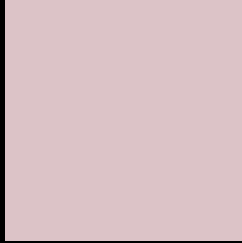
Any Text WCAG AA × Fail

Large Text (above 18pt) WCAG AAA × Fail

Any Text WCAG AAA × Fail



# Black Background



This preview shows how the YIQ color 202.9310, 13.6160, 6.5440 looks on a black background.

## Color Contrast Check

Large Text (above 18pt) WCAG AA ✓ Pass

Any Text WCAG AA ✓ Pass

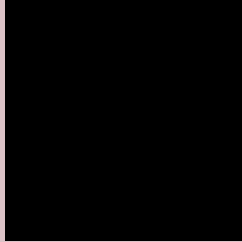
Large Text (above 18pt) WCAG AAA ✓ Pass

Any Text WCAG AAA ✓ Pass

If you want to check with other color combinations, try the [Color Contrast Checker](#).

# YIQ 202.9310, 13.6160, 6.5440

## Background



This preview shows how black text looks on a background with the YIQ color 202.9310, 13.6160, 6.5440.



This preview shows how white text looks on a background with the YIQ color 202.9310, 13.6160,



# Color Blindness Simulation

Color vision deficiency is a very complex topic, and I could not describe the different causes any better than Wikipedia does, so if you want to learn more, you should check out their [article about color blindness](#).

## Dichromacy



### Original Color

202.9310, 13.6160, 6.5440

### Protanopia

201.4240, 1.7420, 1.4700

### Deuteranopia

203.2300, 14.2120, 6.7560



## Tritanopia

203.1960, 11.5520, 10.9120

# Trichromacy



## Original Color

202.9310, 13.6160, 6.5440

## Protanomaly

201.9300, 6.1890, 3.4770

## Deuteranomaly

203.2300, 14.2120, 6.7560

## Tritanomaly

203.3270, 12.5610, 9.1450

# Monochromacy



## Original Color

202.9310, 13.6160, 6.5440

## Achromatopsia

203.0000, 0.0000, -0.0000

## Achromatomaly

202.9190, 4.7220, 2.5300

# CSS Examples

## Text

The CSS property to change the color of the text to YIQ 202.9310, 13.6160, 6.5440 is called "color". The color property can be set on classes, ids or directly on the HTML element.

This example shows how text in the color `rgb(220, 195, 199)` looks like.

```
.text, #text, p{  
    color:rgb(220, 195, 199)  
}
```

If you want to add a text shadow in that color use the text-shadow property, you can generate a text shadow directly with our [CSS Text Shadow Generator](#).

Here you see how black text with a 4 pixel rgb(220, 195, 199) colored shadow looks like.

```
.shadow{ text-shadow: 4px 4px 2px rgb(220, 195, 199) }
```

## Border

The CSS property to change the border of an element to YIQ 202.9310, 13.6160, 6.5440 is called "border". The border property can be set on classes, ids or directly on the HTML element.

This example shows the color as border, it can be applied via the CSS property "border" or "border-color".

```
.border, #border, table{ border:4px solid rgb(220, 195, 199) }
```



If only the border color should be changed use the property `border-color`.

```
.border{ border-color:rgb(220, 195, 199) }
```

If you want to add a box shadow in that color use:

Here you see how a box with a 4 pixel `rgb(220, 195, 199)` colored shadow looks like.

```
.boxshadow{ -moz-box-shadow:4px 4px 4px 4px rgb(220, 195, 199); -webkit-box-shadow:4px 4px 4px 4px rgb(220, 195, 199); box-shadow:4px 4px 4px 4px rgb(220, 195, 199) }
```

# Background

The CSS property to change the background color of an element to YIQ 202.9310, 13.6160, 6.5440 is called "background". The background property can be set on classes, ids or directly on the HTML element.

```
.background, #background, body{  
background: rgb(220, 195, 199) }
```

If only the background color should be changed can be used:

```
.background{ background-color: rgb(220,  
195, 199) }
```

This example shows the color as background, it is applied via the CSS property "background".

To optimize and compress your CSS code, you can use our [online CSS compressor and optimizer](#) based on csstidy. If you want to create a linear or radial gradient as background or border, check our [CSS Gradient Generator](#).

Hey! You found this booklet interesting? Support Converting Colors with the new Membership Option!

The pro membership hides all ads, plus gives you double the colors in the color bucket, and more awesome pro features!

**[Learn more, Memberships starting at \\$2.50/m!](#)**

**Follow me  
on Twitter!**

@ConvertingColor