

Converting Colors

YIQ(203.3650, 9.3980, 5.8940)

Have a look what the booklet for
YIQ(203.3650, 9.3980, 5.8940)
contains.

YIQ(203.3650, 9.3980, 5.8940)	3
<i>Conversions</i>	4
<i>Details</i>	6
<i>Harmonies</i>	12
<i>Previews</i>	24
<i>Color Blindness Simulation</i>	28
<i>CSS Examples</i>	31

Color

**YIQ(203.3650, 9.3980,
5.8940)**

Conversions

Conversions Part 1

Format	Color
Hex	D8C5CB
RGB	216, 197, 203
RGB Percent	85%, 77%, 80%
CMY	0.1529, 0.2275, 0.2039
CMYK	0.00, 0.09, 0.06, 0.15
HSL	341°, 20%, 81%
HSV	341°, 9%, 85%
XYZ	59.0675, 58.8419, 64.7495
YIQ	203.3650, 9.3980, 5.8940

Conversions

Conversions Part 2

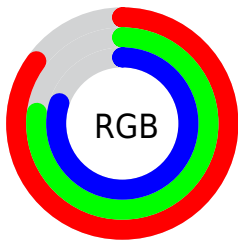
Format	Color
R _Y B	216, 197, 203
Decimal	14206411
CIE Lab	81.20, 7.70, -0.59
CIE LCh	81, 7.722, 355.607
Yxy	58.8419, 0.3234, 0.3221
Android (android.graphics.Color)	4292396491 (0xFFD8C5CB)
YUV	203.3650, -0.1799, 11.0809
Hunter-Lab	76.7085, 3.2098, 3.6493

Details

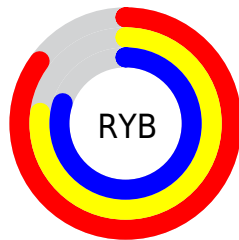
The YIQ color $203.3650, 9.3980, 5.8940$ is a light color, and the websafe version is hex `CCCCCC`. A complement of this color would be $209.6350, -9.3980, -5.8940$, and the grayscale version is $203.0000, 0.0000, -0.0000$.

A 20% lighter version of the original color is $254.4130, 0.2750, 0.5230$, and $149.0660, 8.8020, 5.6820$ is the 20% darker color. If you saturate the color by 10%, you get $188.7410, 20.2630, 12.7350$, and if you desaturate by 10%, it is $217.9890, -1.4670, -0.9470$.

Distribution



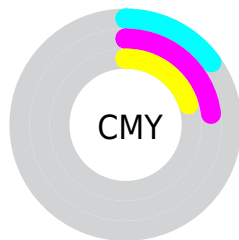
- Red (85%)
- Green (77%)
- Blue (80%)



- Red (85%)
- Yellow (77%)
- Blue (80%)



- Cyan (0%)
- Magenta (9%)
- Yellow (6%)
- Black (15%)



- Cyan (15%)
- Magenta (23%)
- Yellow (20%)

Brightness & Saturation Gradients

These gradients show how the YIQ color 203.3650, 9.3980, 5.8940 changes by changing the brightness by 10 percent. The first figure shows a shift by +10% for each color and the second figure -10%.

Similar to the brightness gradients but the following saturation gradients show a change of the YIQ color 203.3650, 9.3980, 5.8940 by changing the saturation by 10% instead.

■ 203.3650, 9.3980,
5.8940

■ 203.3650, 9.3980,
5.8940

255.0000, -0.0000,
-0.0000

■ 176.0660, 8.8020,
5.6820

254.4130, 0.2750,
0.5230

■ 149.0660, 8.8020,
5.6820

■ 123.6530, 8.5270,
5.1590

■ 98.6530, 8.5270,
5.1590

■ 74.4680, 7.6100,
5.2580

■ 52.0550, 7.3350,
4.7350

■ 30.7560, 6.7390,

4.5230

■ 6.6640, 9.9940,
6.1060

■ 0.0000, 0.0000,
0.0000

■ 203.3650, 9.3980,
5.8940

■ 203.3650, 9.3980,
5.8940

■ 188.7410, 20.2630,
12.7350

■ 217.9890, -1.4670,
-0.9470

■ 174.7040, 30.8530,
19.0530

■ 232.0260,
-12.0570, -7.2650

■ 160.1940, 41.3970,
26.2050

■ 242.4270,
-20.6760, -10.7560

■ 146.1570, 51.9870,
32.5230

■ 243.3390,
-23.2440, -8.2680

■ 131.5330, 62.8520,
39.3640

■ 116.9090, 73.7170,
46.2050

■ 102.9860, 83.9860,
52.8340

■ 88.3620, 94.8510,
59.6750

■ 74.3250, 105.4410,
65.9930

Harmonies

Analogous

The Analogous color harmony consists of three colors that are next to each other on the color wheel.



202.9560, 3.3000, 6.2760



203.3650, 9.3980, 5.8940



203.1650, 12.8370, 4.1410

Triad

The Triadic color harmony groups three colors that are evenly spaced from another and form a triangle on the color wheel.



203.3650, 9.3980, 5.8940



200.8060, 3.3020, -4.7780



200.5300, -13.2960, -1.3280

Complementary

The Complementary color scheme is a pair of colors which are on the opposite of each other on the color wheel.



203.3650, 9.3980, 5.8940



209.6350, -9.3980, -5.8940

Split Complementary

Split-complementary colors differ from the complementary color scheme. The scheme consists of three colors, the original color and two neighbors of the complement color.



199.6500, -13.7540, -4.0420



203.3650, 9.3980, 5.8940



200.0440, -3.3000, -6.2760

Square

The Square scheme is like the rectangle color scheme, but the four colors are evenly spaced on the color wheel.



203.3650, 9.3980, 5.8940



201.7960, 9.2620, -2.6580



199.3360, -9.9940, -6.1060



201.4920, -10.1330, 1.9230

Rectangle

The Rectangle color scheme consists of four colors that form a rectangle on the color wheel.



203.3650, 9.3980, 5.8940



202.6980, 12.6540, 1.9500



199.3360, -9.9940, -6.1060



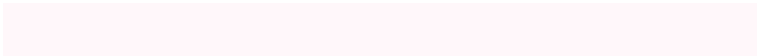
199.8180, -14.1670, -2.0630

Sweetspot

The Sweet Spot groups the original color and five complimentary colors.



203.3650, 9.3980, 5.8940



249.7340, 3.8050, 2.6290



203.0530, 1.6490, 8.6650



124.0220, 2.9340, 1.8940



0.0000, 0.0000, 0.0000



128.0000, -0.0000, -0.0000

Same Dimension

The Same Dimension uses a secret algorithm to generate beautiful new colors.



203.3650, 9.3980, 5.8940



236.3980, 13.7990, 8.7350



204.4420, 10.4990, 2.4590



99.7450, 5.2720, 3.5760



57.2850, 84.5820, 53.0460



14.4530, 21.1340, 13.4700

Inverse Universe

The Inverse Universe completely reimagines the original color for something new.



203.3650, 9.3980, 5.8940



236.3980, 13.7990, 8.7350



208.5580, -10.4990, -2.4590



99.7450, 5.2720, 3.5760



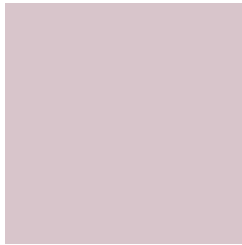
57.2850, 84.5820, 53.0460



14.4530, 21.1340, 13.4700

Previews

White Background



This preview shows how the YIQ color 203.3650, 9.3980, 5.8940 looks on a white background.

Color Contrast Check

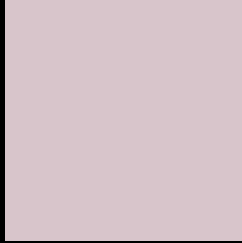
Large Text (above 18pt) WCAG AA × Fail

Any Text WCAG AA × Fail

Large Text (above 18pt) WCAG AAA × Fail

Any Text WCAG AAA × Fail

Black Background



This preview shows how the YIQ color 203.3650, 9.3980, 5.8940 looks on a black background.

Color Contrast Check

Large Text (above 18pt) WCAG AA ✓ Pass

Any Text WCAG AA ✓ Pass

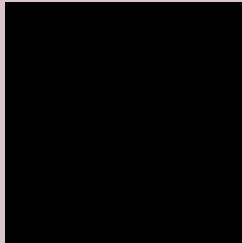
Large Text (above 18pt) WCAG AAA ✓ Pass

Any Text WCAG AAA ✓ Pass

If you want to check with other color combinations, try the [Color Contrast Checker](#).

YIQ 203.3650, 9.3980, 5.8940

Background



This preview shows how black text looks on a background with the YIQ color 203.3650, 9.3980, 5.8940.



This preview shows how white text looks on a background with the YIQ color 203.3650, 9.3980,

Color Blindness Simulation

Color vision deficiency is a very complex topic, and I could not describe the different causes any better than Wikipedia does, so if you want to learn more, you should check out their [article about color blindness](#).

Dichromacy



Original Color

203.3650, 9.3980, 5.8940

Protanopia

202.3530, 0.5040, 1.8800

Deuteranopia

203.3870, 12.3320, 7.7880



Tritanopia

203.9890, 7.7010, 9.1170

Trichromacy



Original Color

203.3650, 9.3980, 5.8940

Protanomaly

202.8480, 3.4840, 2.9400

Deuteranomaly

203.6750, 11.4610, 7.0530

Tritanomaly

203.6470, 8.6640, 8.1840

Monochromacy



Original Color

203.3650, 9.3980, 5.8940

Achromatopsia

203.0000, 0.0000, -0.0000

Achromatomaly

203.3210, 3.5300, 2.1060

CSS Examples

Text

The CSS property to change the color of the text to YIQ 203.3650, 9.3980, 5.8940 is called "color". The color property can be set on classes, ids or directly on the HTML element.

This example shows how text in the color `rgb(216, 197, 203)` looks like.

```
.text, #text, p{  
    color:rgb(216, 197, 203)  
}
```

If you want to add a text shadow in that color use the text-shadow property, you can generate a text shadow directly with our [CSS Text Shadow Generator](#).

Here you see how black text with a 4 pixel rgb(216, 197, 203) colored shadow looks like.

```
.shadow{ text-shadow: 4px 4px 2px rgb(216, 197, 203) }
```

Border

The CSS property to change the border of an element to YIQ 203.3650, 9.3980, 5.8940 is called "border". The border property can be set on classes, ids or directly on the HTML element.

This example shows the color as border, it can be applied via the CSS property "border" or "border-color".

```
.border, #border, table{ border:4px solid rgb(216, 197, 203) }
```


If only the border color should be changed use the property `border-color`.

```
.border{ border-color:rgb(216, 197, 203) }
```

If you want to add a box shadow in that color use:

Here you see how a box with a 4 pixel `rgb(216, 197, 203)` colored shadow looks like.

```
.boxshadow{ -moz-box-shadow:4px 4px 4px  
4px rgb(216, 197, 203); -webkit-box-  
shadow:4px 4px 4px 4px rgb(216, 197, 203);  
box-shadow:4px 4px 4px 4px rgb(216, 197,  
203) }
```

Background

The CSS property to change the background color of an element to YIQ 203.3650, 9.3980, 5.8940 is called "background". The background property can be set on classes, ids or directly on the HTML element.

```
.background, #background, body{  
background: rgb(216, 197, 203) }
```

If only the background color should be changed can be used:

```
.background{ background-color: rgb(216,  
197, 203) }
```

This example shows the color as background, it is applied via the CSS property "background".

To optimize and compress your CSS code, you can use our [online CSS compressor and optimizer](#) based on csstidy. If you want to create a linear or radial gradient as background or border, check our [CSS Gradient Generator](#).

Hey! You found this booklet interesting? Support Converting Colors with the new Membership Option!

The pro membership hides all ads, plus gives you double the colors in the color bucket, and more awesome pro features!

[Learn more, Memberships starting at \\$2.50/m!](#)

**Follow me
on Twitter!**

@ConvertingColor