

Converting Colors

YIQ(204.1200, 8.7100, 7.3500)

Have a look what the booklet for
YIQ(204.1200, 8.7100, 7.3500)
contains.

YIQ(204.1200, 8.7100, 7.3500)	3
<i>Conversions</i>	4
<i>Details</i>	6
<i>Harmonies</i>	12
<i>Previews</i>	24
<i>Color Blindness Simulation</i>	28
<i>CSS Examples</i>	31

Color

**YIQ(204.1200, 8.7100,
7.3500)**

Conversions

Conversions Part 1

Format	Color
Hex	D9C5CF
RGB	217, 197, 207
RGB Percent	85%, 77%, 81%
CMY	0.1490, 0.2275, 0.1882
CMYK	0.00, 0.09, 0.05, 0.15
HSL	330°, 21%, 81%
HSV	330°, 9%, 85%
XYZ	59.8470, 59.1878, 67.3060
YIQ	204.1200, 8.7100, 7.3500

Conversions

Conversions Part 2

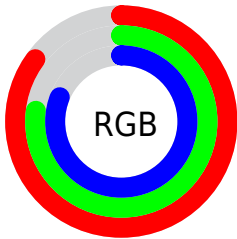
Format	Color
R _Y B	217, 197, 207
Decimal	14271951
CIE Lab	81.39, 8.75, -2.45
CIE LCh	81, 9.084, 344.363
Yxy	59.1878, 0.3212, 0.3176
Android (android.graphics.Color)	4292462031 (0xFFD9C5CF)
YUV	204.1200, 1.4198, 11.2958
Hunter-Lab	76.9336, 4.2221, 1.9832

Details

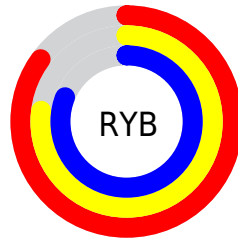
The YIQ color $204.1200, 8.7100, 7.3500$ is a light color, and the websafe version is hex `CCCCCC`. A complement of this color would be $209.8800, -8.7100, -7.3500$, and the grayscale version is $204.0000, -0.0000, -0.0000$.

A 20% lighter version of the original color is $254.4130, 0.2750, 0.5230$, and $149.8210, 8.1140, 7.1380$ is the 20% darker color. If you saturate the color by 10%, you get $189.9520, 18.2910, 15.4350$, and if you desaturate by 10%, it is $218.2880, -0.8710, -0.7350$.

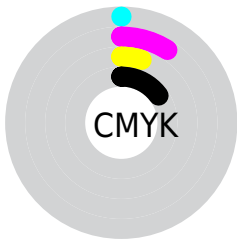
Distribution



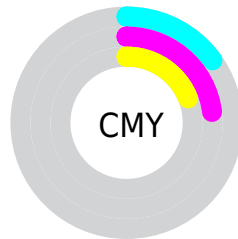
- Red (85%)
- Green (77%)
- Blue (81%)



- Red (85%)
- Yellow (77%)
- Blue (81%)



- Cyan (0%)
- Magenta (9%)
- Yellow (5%)
- Black (15%)



- Cyan (15%)
- Magenta (23%)
- Yellow (19%)

Brightness & Saturation Gradients

These gradients show how the YIQ color 204.1200, 8.7100, 7.3500 changes by changing the brightness by 10 percent. The first figure shows a shift by +10% for each color and the second figure -10%.

Similar to the brightness gradients but the following saturation gradients show a change of the YIQ color 204.1200, 8.7100, 7.3500 by changing the saturation by 10% instead.

■ 204.1200, 8.7100,
7.3500

■ 204.1200, 8.7100,
7.3500

255.0000, -0.0000,
-0.0000

■ 176.7070, 8.4350,
6.8270

254.4130, 0.2750,
0.5230

■ 149.8210, 8.1140,
7.1380

■ 124.4080, 7.8390,
6.6150

■ 99.1090, 7.2430,
6.4030

■ 75.1090, 7.2430,
6.4030

■ 52.6960, 6.9680,
5.8800

■ 31.3970, 6.3720,

5.6680

■ 7.5330, 8.9850,
7.8730

■ 0.0000, 0.0000,
0.0000

■ 204.1200, 8.7100,
7.3500

■ 204.1200, 8.7100,
7.3500

■ 189.9520, 18.2910,
15.4350

■ 218.2880, -0.8710,
-0.7350

■ 176.3710, 27.5970,
22.9970

■ 231.8690,
-10.1770, -8.2970

■ 162.2030, 37.1780,
31.0820

■ 241.9280,
-17.8330, -12.7210

■ 148.1490, 46.4380,
39.4780

■ 243.0680,
-21.0430, -9.6110

■ 133.9810, 56.0190,
47.5630

■ 243.6380,
-22.6480, -8.0560

■ 120.4000, 65.3250,
55.1250

■ 106.2320, 74.9060,
63.2100

■ 92.0640, 84.4870,
71.2950

■ 78.4830, 93.7930,
78.8570

Harmonies

Analogous

The Analogous color harmony consists of three colors that are next to each other on the color wheel.



203.7000, 1.1450, 6.7850



204.1200, 8.7100, 7.3500



204.2900, 13.9830, 5.3990

Triad

The Triadic color harmony groups three colors that are evenly spaced from another and form a triangle on the color wheel.



204.1200, 8.7100, 7.3500



201.6600, 6.6490, -4.8630



200.0350, -16.2760, -2.3880

Complementary

The Complementary color scheme is a pair of colors which are on the opposite of each other on the color wheel.



204.1200, 8.7100, 7.3500



209.8800, -8.7100, -7.3500

Split Complementary

Split-complementary colors differ from the complementary color scheme. The scheme consists of three colors, the original color and two neighbors of the complement color.



199.4110, -14.5790, -5.6110



204.1200, 8.7100, 7.3500



200.3000, -1.1450, -6.7850

Square

The Square scheme is like the rectangle color scheme, but the four colors are evenly spaced on the color wheel.



204.1200, 8.7100, 7.3500



202.5900, 12.8380, -1.3860



199.8800, -8.7100, -7.3500



201.1110, -13.4340, 1.1740

Rectangle

The Rectangle color scheme consists of four colors that form a rectangle on the color wheel.



204.1200, 8.7100, 7.3500



203.7200, 15.5880, 3.8440



199.8800, -8.7100, -7.3500



199.9810, -16.1840, -4.0560

Sweetspot

The Sweet Spot groups the original color and five complimentary colors.



204.1200, 8.7100, 7.3500



249.8480, 3.4840, 2.9400



202.2700, -0.4600, 8.3400



124.1360, 2.6130, 2.2050



0.0000, 0.0000, 0.0000



128.0000, -0.0000, -0.0000

Same Dimension

The Same Dimension uses a secret algorithm to generate beautiful new colors.



204.1200, 8.7100, 7.3500



236.9680, 12.1940, 10.2900



202.9800, 11.9200, 4.2400



102.8590, 4.9510, 3.8870



61.6450, 75.1810, 63.7330



16.3760, 20.0330, 16.9050

Inverse Universe

The Inverse Universe completely reimagines the original color for something new.



204.1200, 8.7100, 7.3500



236.9680, 12.1940, 10.2900



211.0200, -11.9200, -4.2400



102.8590, 4.9510, 3.8870



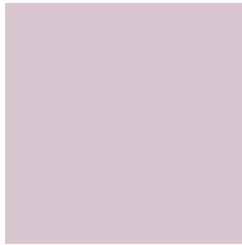
61.6450, 75.1810, 63.7330



16.3760, 20.0330, 16.9050

Previews

White Background



This preview shows how the YIQ color 204.1200, 8.7100, 7.3500 looks on a white background.

Color Contrast Check

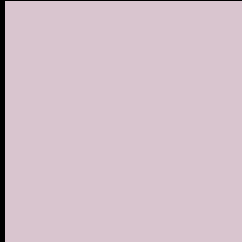
Large Text (above 18pt) WCAG AA × Fail

Any Text WCAG AA × Fail

Large Text (above 18pt) WCAG AAA × Fail

Any Text WCAG AAA × Fail

Black Background



This preview shows how the YIQ color 204.1200, 8.7100, 7.3500 looks on a black background.

Color Contrast Check

Large Text (above 18pt) WCAG AA ✓ Pass

Any Text WCAG AA ✓ Pass

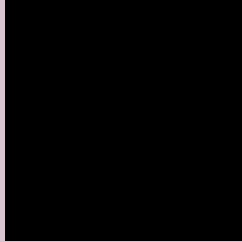
Large Text (above 18pt) WCAG AAA ✓ Pass

Any Text WCAG AAA ✓ Pass

If you want to check with other color combinations, try the [Color Contrast Checker](#).

YIQ 204.1200, 8.7100, 7.3500

Background



This preview shows how black text looks on a background with the YIQ color 204.1200, 8.7100, 7.3500.



This preview shows how white text looks on a background with the YIQ color 204.1200, 8.7100,

7.3500.

Color Blindness Simulation

Color vision deficiency is a very complex topic, and I could not describe the different causes any better than Wikipedia does, so if you want to learn more, you should check out their [article about color blindness](#).

Dichromacy



Original Color

204.1200, 8.7100, 7.3500

Protanopia

202.8090, -0.7800, 3.1240

Deuteranopia

204.4300, 10.7730, 8.5090



Tritanopia

204.4020, 7.9760, 9.6400

Trichromacy



Original Color

204.1200, 8.7100, 7.3500

Protanomaly

203.6030, 2.7960, 4.3960

Deuteranomaly

204.1310, 10.1770, 8.2970

Tritanomaly

204.1740, 8.6180, 9.0180

Monochromacy



Original Color

204.1200, 8.7100, 7.3500

Achromatopsia

204.0000, -0.0000, -0.0000

Achromatomaly

203.8480, 3.4840, 2.9400

CSS Examples

Text

The CSS property to change the color of the text to YIQ 204.1200, 8.7100, 7.3500 is called "color". The color property can be set on classes, ids or directly on the HTML element.

This example shows how text in the color `rgb(217, 197, 207)` looks like.

```
.text, #text, p{  
    color:rgb(217, 197, 207)  
}
```

If you want to add a text shadow in that color use the text-shadow property, you can generate a text shadow directly with our [CSS Text Shadow Generator](#).

Here you see how black text with a 4 pixel rgb(217, 197, 207) colored shadow looks like.

```
.shadow{ text-shadow: 4px 4px 2px rgb(217, 197, 207) }
```

Border

The CSS property to change the border of an element to YIQ 204.1200, 8.7100, 7.3500 is called "border". The border property can be set on classes, ids or directly on the HTML element.

This example shows the color as border, it can be applied via the CSS property "border" or "border-color".

```
.border, #border, table{ border:4px solid rgb(217, 197, 207) }
```


If only the border color should be changed use the property `border-color`.

```
.border{ border-color:rgb(217, 197, 207) }
```

If you want to add a box shadow in that color use:

Here you see how a box with a 4 pixel `rgb(217, 197, 207)` colored shadow looks like.

```
.boxshadow{ -moz-box-shadow:4px 4px 4px  
4px rgb(217, 197, 207); -webkit-box-  
shadow:4px 4px 4px 4px rgb(217, 197, 207);  
box-shadow:4px 4px 4px 4px rgb(217, 197,  
207) }
```

Background

The CSS property to change the background color of an element to YIQ 204.1200, 8.7100, 7.3500 is called "background". The background property can be set on classes, ids or directly on the HTML element.

```
.background, #background, body{  
background: rgb(217, 197, 207) }
```

If only the background color should be changed can be used:

```
.background{ background-color: rgb(217,  
197, 207) }
```

This example shows the color as background, it is applied via the CSS property "background".

To optimize and compress your CSS code, you can use our [online CSS compressor and optimizer](#) based on csstidy. If you want to create a linear or radial gradient as background or border, check our [CSS Gradient Generator](#).

Hey! You found this booklet interesting? Support Converting Colors with the new Membership Option!

The pro membership hides all ads, plus gives you double the colors in the color bucket, and more awesome pro features!

[Learn more, Memberships starting at \\$2.50/m!](#)

**Follow me
on Twitter!**

@ConvertingColor