

Converting Colors

YIQ(204.1950, 21.3200, -0.9200)

Have a look what the booklet for
YIQ(204.1950, 21.3200, -0.9200)
contains.

YIQ(204.1950, 21.3200, -0.9200)	3
<i>Conversions</i>	4
<i>Details</i>	6
<i>Harmonies</i>	12
<i>Previews</i>	24
<i>Color Blindness Simulation</i>	28
<i>CSS Examples</i>	31

Color

**YIQ(204.1950, 21.3200,
-0.9200)**

Conversions

Conversions Part 1

Format	Color
Hex	E0C7B3
RGB	224, 199, 179
RGB Percent	88%, 78%, 70%
CMY	0.1215, 0.2196, 0.2979
CMYK	0.00, 0.11, 0.20, 0.12
HSL	27°, 42%, 79%
HSV	27°, 20%, 88%
XYZ	59.3044, 59.9469, 51.1066
YIQ	204.1950, 21.3200, -0.9200

Conversions

Conversions Part 2

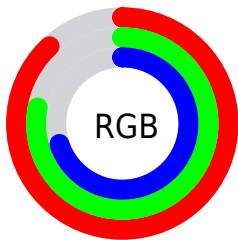
Format	Color
R_{YB}	224, 215, 179
Decimal	14731187
CIE _{Lab}	81.81, 5.66, 13.21
CIE _{LCh}	82, 14.369, 66.793
Yxy	59.9469, 0.3481, 0.3519
Android (android.graphics.Color)	4292921267 (0xFFE0C7B3)
YUV	204.1950, -12.4211, 17.3690
Hunter-Lab	77.4254, 1.2287, 15.0619

Details

The YIQ color $204.1950, 21.3200, -0.9200$ is a light color, and the websafe version is hex `CCCCCC`. A complement of this color would be $198.8050, -21.3200, 0.9200$, and the grayscale version is $204.0000, -0.0000, -0.0000$.

A 20% lighter version of the original color is $252.7200, 6.4200, -6.2200$, and $149.7110, 19.8070, -1.0330$ is the 20% darker color. If you saturate the color by 10%, you get $194.6430, 31.6820, -1.4860$, and if you desaturate by 10%, it is $213.7470, 10.9580, -0.3540$.

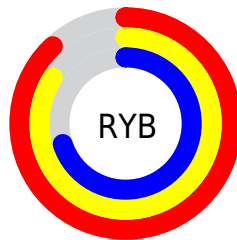
Distribution



Red (88%)

Green (78%)

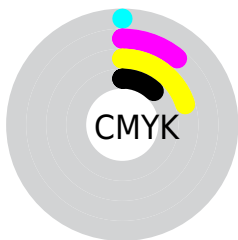
Blue (70%)



Red (88%)

Yellow (84%)

Blue (70%)

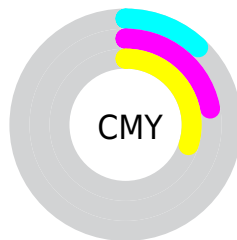


Cyan (0%)

Magenta (11%)

Yellow (20%)

Black (12%)



Cyan (12%)


Magenta (22%)


Yellow (30%)

Brightness & Saturation Gradients


These gradients show how the YIQ color 204.1950, 21.3200, -0.9200 changes by changing the brightness by 10 percent. The first figure shows a shift by +10% for each color and the second figure -10%.

Similar to the brightness gradients but the following saturation gradients show a change of the YIQ color 204.1950, 21.3200, -0.9200 by changing the saturation by 10% instead.


 204.1950, 21.3200,
-0.9200


 204.1950, 21.3200,
-0.9200


255.0000, -0.0000,
-0.0000


 176.8960, 20.7240,
-1.1320


 252.7200, 6.4200,
-6.2200

 149.7110, 19.8070,
-1.0330

 123.8250, 19.4860,
-0.7220

 99.2270, 18.2940,
-1.1460

 75.0420, 17.3770,
-1.0470

 52.5580, 15.8640,
-1.1600

 30.8460, 14.9930,

-1.8950

■ 7.4530, 11.9660,
3.4060

■ 0.0000, 0.0000,
0.0000

■ 204.1950, 21.3200,
-0.9200

■ 204.1950, 21.3200,
-0.9200

■ 194.6430, 31.6820,
-1.4860

■ 213.7470, 10.9580,
-0.3540

■ 184.3900, 42.6400,
-1.8400

■ 224.0000, -0.0000,
0.0000

■ 174.8380, 53.0020,
-2.4060

■ 233.5520,
-10.3620, 0.5660

■ 164.5850, 63.9600,
-2.7600

■ 242.2090,
-16.8260, -3.4340

■ 155.0330, 74.3220,
-3.3260

■ 245.7310,
-18.4760, -6.5720

■ 144.8940, 84.9590,
-3.3690

■ 135.2280, 95.6420,
-4.2460

■ 125.0890,
106.2790, -4.2890

Harmonies

Analogous

The Analogous color harmony consists of three colors that are next to each other on the color wheel.



205.5530, 23.4280, 4.9320



204.1950, 21.3200, -0.9200



202.4280, 13.1140, -6.3900

Triad

The Triadic color harmony groups three colors that are evenly spaced from another and form a triangle on the color wheel.



204.1950, 21.3200, -0.9200



198.4700, -22.2350, -10.0350



205.2530, -1.7900, 10.4180

Complementary

The Complementary color scheme is a pair of colors which are on the opposite of each other on the color wheel.



204.1950, 21.3200, -0.9200



198.8050, -21.3200, 0.9200

Split Complementary

Split-complementary colors differ from the complementary color scheme. The scheme consists of three colors, the original color and two neighbors of the complement color.



203.0880, -14.6270, 6.2770



204.1950, 21.3200, -0.9200



199.0660, -26.7290, -5.6810

Square

The Square scheme is like the rectangle color scheme, but the four colors are evenly spaced on the color wheel.



204.1950, 21.3200, -0.9200



199.2770, -11.5060, -11.7460



201.3100, -24.3000, -0.1400



205.8370, 11.1850, 12.0570

Rectangle

The Rectangle color scheme consists of four colors that form a rectangle on the color wheel.



204.1950, 21.3200, -0.9200



201.4270, 5.6870, -9.4570



201.3100, -24.3000, -0.1400



204.2740, -6.2830, 9.2450

Sweetspot

The Sweet Spot groups the original color and five complimentary colors.



204.1950, 21.3200, -0.9200



248.0070, 7.2900, 0.0420



195.4190, 18.4740, 17.6260



124.0390, 4.2640, -0.1840



0.0000, 0.0000, 0.0000



128.0000, -0.0000, -0.0000

Same Dimension

The Same Dimension uses a secret algorithm to generate beautiful new colors.



204.1950, 21.3200, -0.9200



228.0880, 28.9310, -1.1890



217.1090, 15.2700, -12.4260



107.2240, 5.1810, -0.2830



98.4100, 83.4460, -3.4820



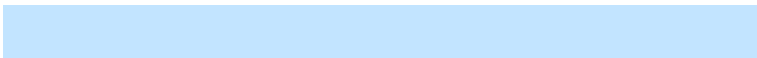
27.2660, 22.5580, -1.3300

Inverse Universe

The Inverse Universe completely reimagines the original color for something new.



198.8050, -21.3200, 0.9200



220.9120, -28.9310, 1.1890



185.8910, -15.2700, 12.4260



105.7760, -5.1810, 0.2830



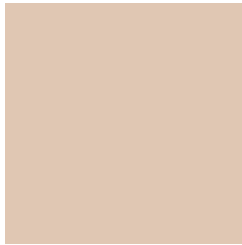
77.5900, -83.4460, 3.4820



21.3210, -22.8330, 0.8070

Previews

White Background



This preview shows how the YIQ color 204.1950, 21.3200, -0.9200 looks on a white background.

Color Contrast Check

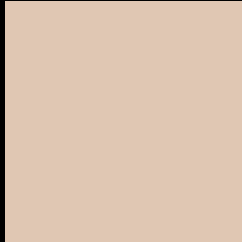
Large Text (above 18pt) WCAG AA × Fail

Any Text WCAG AA × Fail

Large Text (above 18pt) WCAG AAA × Fail

Any Text WCAG AAA × Fail

Black Background



This preview shows how the YIQ color 204.1950, 21.3200, -0.9200 looks on a black background.

Color Contrast Check

Large Text (above 18pt) WCAG AA ✓ Pass

Any Text WCAG AA ✓ Pass

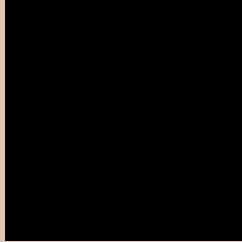
Large Text (above 18pt) WCAG AAA ✓ Pass

Any Text WCAG AAA ✓ Pass

If you want to check with other color combinations, try the [Color Contrast Checker](#).

YIQ 204.1950, 21.3200, -0.9200

Background



This preview shows how black text looks on a background with the YIQ color 204.1950, 21.3200, -0.9200.



This preview shows how white text looks on a background with the YIQ color 204.1950, 21.3200,

-0.9200.

Color Blindness Simulation

Color vision deficiency is a very complex topic, and I could not describe the different causes any better than Wikipedia does, so if you want to learn more, you should check out their [article about color blindness](#).

Dichromacy



Original Color

204.1950, 21.3200, -0.9200

Protanopia

203.1830, 12.4260, -4.9340

Deuteranopia

204.9400, 26.5920, 2.6560



Tritanopia

206.5770, 14.8530, 11.6610

Trichromacy



Original Color

204.1950, 21.3200, -0.9200

Protanomaly

203.6780, 15.4060, -3.8740

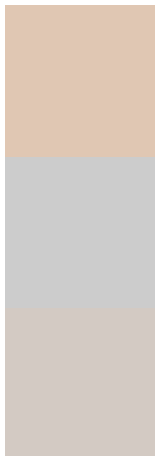
Deuteranomaly

204.6300, 24.5290, 1.4970

Tritanomaly

205.6110, 17.5130, 7.5050

Monochromacy



Original Color

204.1950, 21.3200, -0.9200

Achromatopsia

204.0000, -0.0000, -0.0000

Achromatomaly

203.8930, 7.6110, -0.2690

CSS Examples

Text

The CSS property to change the color of the text to YIQ 204.1950, 21.3200, -0.9200 is called "color". The color property can be set on classes, ids or directly on the HTML element.

This example shows how text in the color `rgb(224, 199, 179)` looks like.

```
.text, #text, p{  
    color:rgb(224, 199, 179)  
}
```

If you want to add a text shadow in that color use the text-shadow property, you can generate a text shadow directly with our [CSS Text Shadow Generator](#).

Here you see how black text with a 4 pixel rgb(224, 199, 179) colored shadow looks like.

```
.shadow{ text-shadow: 4px 4px 2px rgb(224, 199, 179) }
```

Border

The CSS property to change the border of an element to YIQ 204.1950, 21.3200, -0.9200 is called "border". The border property can be set on classes, ids or directly on the HTML element.

This example shows the color as border, it can be applied via the CSS property "border" or "border-color".

```
.border, #border, table{ border:4px solid rgb(224, 199, 179) }
```


If only the border color should be changed use the property `border-color`.

```
.border{ border-color:rgb(224, 199, 179) }
```

If you want to add a box shadow in that color use:

Here you see how a box with a 4 pixel `rgb(224, 199, 179)` colored shadow looks like.

```
.boxshadow{ -moz-box-shadow:4px 4px 4px 4px rgb(224, 199, 179); -webkit-box-shadow:4px 4px 4px 4px rgb(224, 199, 179); box-shadow:4px 4px 4px 4px rgb(224, 199, 179) }
```

Background

The CSS property to change the background color of an element to YIQ 204.1950, 21.3200, -0.9200 is called "background". The background property can be set on classes, ids or directly on the HTML element.

```
.background, #background, body{  
background: rgb(224, 199, 179) }
```

If only the background color should be changed can be used:

```
.background{ background-color: rgb(224,  
199, 179) }
```

This example shows the color as background, it is applied via the CSS property "background".

To optimize and compress your CSS code, you can use our [online CSS compressor and optimizer](#) based on csstidy. If you want to create a linear or radial gradient as background or border, check our [CSS Gradient Generator](#).

Hey! You found this booklet interesting? Support Converting Colors with the new Membership Option!

The pro membership hides all ads, plus gives you double the colors in the color bucket, and more awesome pro features!

[Learn more, Memberships starting at \\$2.50/m!](#)

**Follow me
on Twitter!**

@ConvertingColor