

Converting Colors

YIQ(204.2070, 30.2140, 3.0940)

Have a look what the booklet for
YIQ(204.2070, 30.2140, 3.0940)
contains.

YIQ(204.2070, 30.2140, 3.0940)	3
<i>Conversions</i>	4
<i>Details</i>	6
<i>Harmonies</i>	12
<i>Previews</i>	24
<i>Color Blindness Simulation</i>	28
<i>CSS Examples</i>	31

Color

**YIQ(204.2070, 30.2140,
3.0940)**

Conversions

Conversions Part 1

Format	Color
Hex	EBC2B0
RGB	235, 194, 176
RGB Percent	92%, 76%, 69%
CMY	0.0783, 0.2393, 0.3097
CMYK	0.00, 0.17, 0.25, 0.08
HSL	18°, 60%, 81%
HSV	18°, 25%, 92%
XYZ	61.3960, 59.3777, 49.3171
YIQ	204.2070, 30.2140, 3.0940

Conversions

Conversions Part 2

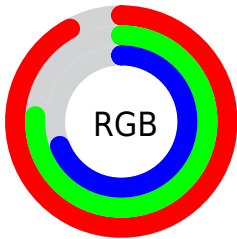
Format	Color
R _Y B	235, 202, 176
Decimal	15450800
CIE Lab	81.50, 11.97, 14.51
CIE LCh	81, 18.805, 50.483
Yxy	59.3777, 0.3610, 0.3491
Android (android.graphics.Color)	4293640880 (0xFFEBC2B0)
YUV	204.2070, -13.9061, 27.0055
Hunter-Lab	77.0570, 7.3723, 15.9937

Details

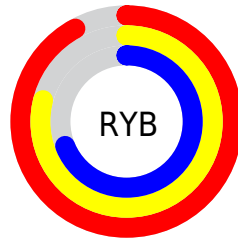
The YIQ color $204.2070, 30.2140, 3.0940$ is a light color, and the websafe version is hex FFCCCC . A complement of this color would be $206.7930, -30.2140, -3.0940$, and the grayscale version is $204.0000, -0.0000, -0.0000$.

A 20% lighter version of the original color is $250.0300, 8.4830, -5.0610$, and $149.4240, 28.1050, 2.7690$ is the 20% darker color. If you saturate the color by 10%, you get $192.1930, 41.9970, 4.3090$, and if you desaturate by 10%, it is $216.3350, 18.1100, 2.1900$.

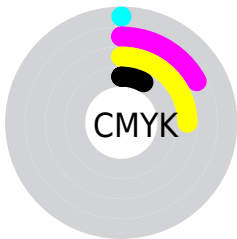
Distribution



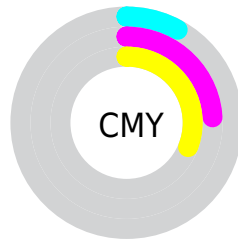
- Red (92%)
- Green (76%)
- Blue (69%)



- Red (92%)
- Yellow (79%)
- Blue (69%)



- Cyan (0%)
- Magenta (17%)
- Yellow (25%)
- Black (8%)



- Cyan (8%)
- Magenta (24%)
- Yellow (31%)

Brightness & Saturation Gradients

These gradients show how the YIQ color 204.2070, 30.2140, 3.0940 changes by changing the brightness by 10 percent. The first figure shows a shift by +10% for each color and the second figure -10%.

Similar to the brightness gradients but the following saturation gradients show a change of the YIQ color 204.2070, 30.2140, 3.0940 by changing the saturation by 10% instead.

204.2070, 30.2140,
3.0940

204.2070, 30.2140,
3.0940

255.0000, -0.0000,
-0.0000

176.6090, 29.0220,
2.6700

250.0300, 8.4830,
-5.0610

149.5380, 27.7840,
3.0800

123.9400, 26.5920,
2.6560

98.7550, 25.6750,
2.7550

74.8580, 23.8870,
2.1190

51.4880, 22.0530,
2.3170

29.2490, 21.2280,

0.7480

■ 8.6710, 17.2840,
6.1480

■ 0.0000, 0.0000,
0.0000

■ 204.2070, 30.2140,
3.0940

■ 204.2070, 30.2140,
3.0940

■ 192.1930, 41.9970,
4.3090

■ 216.3350, 18.1100,
2.1900

■ 179.4780, 54.3760,
5.7360

■ 228.9360, 6.0520,
0.4520

■ 167.4640, 66.1590,
6.9510

■ 241.0640, -6.0520,
-0.4520

■ 155.3360, 78.2630,
7.8550

■ 249.0200,
-11.9200, -4.2400

■ 142.7350, 90.3210,
9.5930

■ 130.6070,
102.4250, 10.4970

■ 118.5930,
114.2080, 11.7120

■ 112.5290,
120.2600, 12.1640

Harmonies

Analogous

The Analogous color harmony consists of three colors that are next to each other on the color wheel.



205.6510, 29.2040, 10.3880



204.2070, 30.2140, 3.0940



202.3430, 23.6590, -4.7650

Triad

The Triadic color harmony groups three colors that are evenly spaced from another and form a triangle on the color wheel.



204.2070, 30.2140, 3.0940



196.4220, -22.2800, -14.7280



203.6910, -11.8310, 10.6730

Complementary

The Complementary color scheme is a pair of colors which are on the opposite of each other on the color wheel.



204.2070, 30.2140, 3.0940



206.7930, -30.2140, -3.0940

Split Complementary

Split-complementary colors differ from the complementary color scheme. The scheme consists of three colors, the original color and two neighbors of the complement color.



200.5640, -27.8310, 3.2810



204.2070, 30.2140, 3.0940



196.0710, -34.2930, -11.7730

Square

The Square scheme is like the rectangle color scheme, but the four colors are evenly spaced on the color wheel.



204.2070, 30.2140, 3.0940



198.5070, -6.4620, -15.0540



197.2160, -35.8990, -4.6910



205.3080, 5.5450, 15.1530

Rectangle

The Rectangle color scheme consists of four colors that form a rectangle on the color wheel.



204.2070, 30.2140, 3.0940



201.1030, 15.4070, -9.4010



197.2160, -35.8990, -4.6910



202.7010, -17.7910, 8.5530

Sweetspot

The Sweet Spot groups the original color and five complimentary colors.



204.2070, 30.2140, 3.0940



244.5020, 10.2700, 1.1020



198.3150, 22.0030, 25.2590



121.2350, 6.6480, 0.6640



0.0000, 0.0000, 0.0000



128.0000, -0.0000, -0.0000

Same Dimension

The Same Dimension uses a secret algorithm to generate beautiful new colors.



204.2070, 30.2140, 3.0940



215.2250, 38.9710, 4.0830



221.2300, 22.2390, -12.0730



111.0500, 5.7310, 0.7630



86.4040, 92.7510, 9.6070



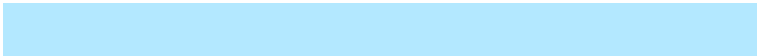
25.5380, 27.7840, 3.0800

Inverse Universe

The Inverse Universe completely reimagines the original color for something new.



206.7930, -30.2140, -3.0940



218.7750, -38.9710, -4.0830



189.7700, -22.2390, 12.0730



111.9500, -5.7310, -0.7630



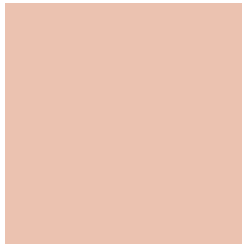
94.5960, -92.7510, -9.6070



27.8750, -27.5090, -2.5570

Previews

White Background



This preview shows how the YIQ color 204.2070, 30.2140, 3.0940 looks on a white background.

Color Contrast Check

Large Text (above 18pt) WCAG AA × Fail

Any Text WCAG AA × Fail

Large Text (above 18pt) WCAG AAA × Fail

Any Text WCAG AAA × Fail

Black Background



This preview shows how the YIQ color 204.2070, 30.2140, 3.0940 looks on a black background.

Color Contrast Check

Large Text (above 18pt) WCAG AA ✓ Pass

Any Text WCAG AA ✓ Pass

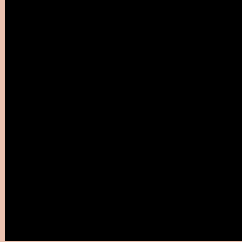
Large Text (above 18pt) WCAG AAA ✓ Pass

Any Text WCAG AAA ✓ Pass

If you want to check with other color combinations, try the [Color Contrast Checker](#).

YIQ 204.2070, 30.2140, 3.0940

Background



This preview shows how black text looks on a background with the YIQ color 204.2070, 30.2140, 3.0940.



This preview shows how white text looks on a background with the YIQ color 204.2070, 30.2140,

Color Blindness Simulation

Color vision deficiency is a very complex topic, and I could not describe the different causes any better than Wikipedia does, so if you want to learn more, you should check out their [article about color blindness](#).

Dichromacy



Original Color

204.2070, 30.2140, 3.0940

Protanopia

202.4820, 13.0220, -4.7220

Deuteranopia

203.8970, 28.1510, 1.9350



Tritanopia

206.0620, 23.7930, 14.8410

Trichromacy



Original Color

204.2070, 30.2140, 3.0940

Protanomaly

202.9990, 18.9360, -1.7680

Deuteranomaly

204.1960, 28.7470, 2.1470

Tritanomaly

205.0960, 26.4530, 10.6850

Monochromacy



Original Color

204.2070, 30.2140, 3.0940

Achromatopsia

204.0000, -0.0000, -0.0000

Achromatomaly

203.8010, 10.8660, 1.3140

CSS Examples

Text

The CSS property to change the color of the text to YIQ 204.2070, 30.2140, 3.0940 is called "color". The color property can be set on classes, ids or directly on the HTML element.

This example shows how text in the color `rgb(235, 194, 176)` looks like.

```
.text, #text, p{  
    color:rgb(235, 194, 176)  
}
```

If you want to add a text shadow in that color use the text-shadow property, you can generate a text shadow directly with our [CSS Text Shadow Generator](#).

Here you see how black text with a 4 pixel rgb(235, 194, 176) colored shadow looks like.

```
.shadow{ text-shadow: 4px 4px 2px rgb(235, 194, 176) }
```

Border

The CSS property to change the border of an element to YIQ 204.2070, 30.2140, 3.0940 is called "border". The border property can be set on classes, ids or directly on the HTML element.

This example shows the color as border, it can be applied via the CSS property "border" or "border-color".

```
.border, #border, table{ border:4px solid rgb(235, 194, 176) }
```


If only the border color should be changed use the property `border-color`.

```
.border{ border-color:rgb(235, 194, 176) }
```

If you want to add a box shadow in that color use:

Here you see how a box with a 4 pixel `rgb(235, 194, 176)` colored shadow looks like.

```
.boxshadow{ -moz-box-shadow:4px 4px 4px  
4px rgb(235, 194, 176); -webkit-box-  
shadow:4px 4px 4px 4px rgb(235, 194, 176);  
box-shadow:4px 4px 4px 4px rgb(235, 194,  
176) }
```

Background

The CSS property to change the background color of an element to YIQ 204.2070, 30.2140, 3.0940 is called "background". The background property can be set on classes, ids or directly on the HTML element.

```
.background, #background, body{  
background: rgb(235, 194, 176) }
```

If only the background color should be changed can be used:

```
.background{ background-color: rgb(235,  
194, 176) }
```

This example shows the color as background, it is applied via the CSS property "background".

To optimize and compress your CSS code, you can use our [online CSS compressor and optimizer](#) based on csstidy. If you want to create a linear or radial gradient as background or border, check our [CSS Gradient Generator](#).

Hey! You found this booklet interesting? Support Converting Colors with the new Membership Option!

The pro membership hides all ads, plus gives you double the colors in the color bucket, and more awesome pro features!

[Learn more, Memberships starting at \\$2.50/m!](#)

**Follow me
on Twitter!**

@ConvertingColor