

# Converting Colors

YIQ(204.2810, 18.2020, 0.5220)

Have a look what the booklet for  
YIQ(204.2810, 18.2020, 0.5220)  
contains.

<b>YIQ(204.2810, 18.2020, 0.5220)</b> .....	3
<b><i>Conversions</i></b> .....	4
<b><i>Details</i></b> .....	6
<b><i>Harmonies</i></b> .....	12
<b><i>Previews</i></b> .....	24
<b><i>Color Blindness Simulation</i></b> .....	28
<b><i>CSS Examples</i></b> .....	31

# Color

**YIQ(204.2810, 18.2020,  
0.5220)**

# Conversions

## Conversions Part 1

<b>Format</b>	<b>Color</b>
Hex	DEC7B9
RGB	222, 199, 185
RGB Percent	87%, 78%, 73%
CMY	0.1294, 0.2196, 0.2744
CMYK	0.00, 0.10, 0.17, 0.13
HSL	23°, 36%, 80%
HSV	23°, 17%, 87%
XYZ	59.3082, 59.8775, 54.3423
YIQ	204.2810, 18.2020, 0.5220

# Conversions

## Conversions Part 2

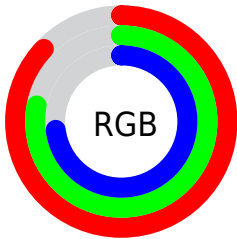
Format	Color
R <sub>Y</sub> B	222, 208, 185
Decimal	14600121
CIE Lab	81.77, 5.83, 9.93
CIE LCh	82, 11.515, 59.560
Yxy	59.8775, 0.3418, 0.3451
Android (android.graphics.Color)	4292790201 (0xFFDEC7B9)
YUV	204.2810, -9.5055, 15.5396
Hunter-Lab	77.3806, 1.3950, 12.5286

# Details

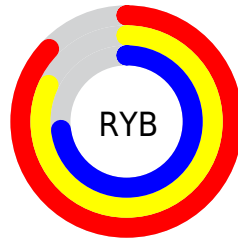
The YIQ color  $204.2810, 18.2020, 0.5220$  is a light color, and the websafe version is hex `CCCCCC`. A complement of this color would be  $202.7190, -18.2020, -0.5220$ , and the grayscale version is  $204.0000, -0.0000, -0.0000$ .

A 20% lighter version of the original color is  $253.4040, 4.4940, -4.3540$ , and  $150.0960, 17.2850, 0.6210$  is the 20% darker color. If you saturate the color by 10%, you get  $193.5550, 29.1140, 1.0020$ , and if you desaturate by 10%, it is  $215.0070, 7.2900, 0.0420$ .

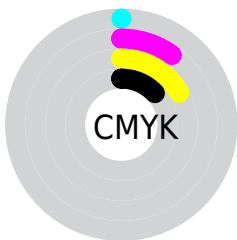
# Distribution



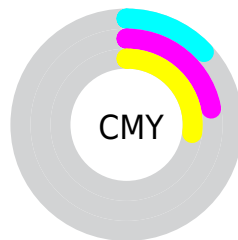
- Red (87%)
- Green (78%)
- Blue (73%)



- Red (87%)
- Yellow (82%)
- Blue (73%)



- Cyan (0%)
- Magenta (10%)
- Yellow (17%)
- Black (13%)



- Cyan (13%)
- Magenta (22%)
- Yellow (27%)

# Brightness & Saturation Gradients

These gradients show how the YIQ color 204.2810, 18.2020, 0.5220 changes by changing the brightness by 10 percent. The first figure shows a shift by +10% for each color and the second figure -10%.

Similar to the brightness gradients but the following saturation gradients show a change of the YIQ color 204.2810, 18.2020, 0.5220 by changing the saturation by 10% instead.



■ 204.2810, 18.2020,  
0.5220

■ 204.2810, 18.2020,  
0.5220

255.0000, -0.0000,  
-0.0000

■ 176.9820, 17.6060,  
0.3100

■ 253.4040, 4.4940,  
-4.3540

■ 150.0960, 17.2850,  
0.6210

■ 123.9110, 16.3680,  
0.7200

■ 99.3130, 15.1760,  
0.2960

■ 75.0140, 14.5800,  
0.0840

■ 52.8290, 13.6630,  
0.1830

■ 31.2310, 12.4710,

-0.2410

■ 7.4530, 11.9660,  
3.4060

■ 0.0000, 0.0000,  
0.0000

■ 204.2810, 18.2020,  
0.5220

■ 204.2810, 18.2020,  
0.5220

■ 193.5550, 29.1140,  
1.0020

■ 215.0070, 7.2900,  
0.0420

■ 182.8290, 40.0260,  
1.4820

■ 225.7330, -3.6220,  
-0.4380

■ 172.5760, 50.9840,  
1.1280

■ 235.9860,  
-14.5800, -0.0840

■ 161.8500, 61.8960,  
1.6080

■ 244.5460,  
-19.3930, -6.4730

■ 151.1240, 72.8080,  
2.0880

■ 245.1330,  
-19.6680, -6.9960

■ 140.3980, 83.7200,  
2.5680

■ 129.6720, 94.6320,  
3.0480

■ 118.8320,  
105.8650, 3.2170

■ 115.6860,  
109.2120, 3.1320

# Harmonies

## Analogous

The Analogous color harmony consists of three colors that are next to each other on the color wheel.



205.5140, 19.1640, 5.1160



204.2810, 18.2020, 0.5220



203.0090, 12.9760, -3.8880

# Triad

The Triadic color harmony groups three colors that are evenly spaced from another and form a triangle on the color wheel.



204.2810, 18.2020, 0.5220



199.9330, -16.2290, -8.7490



204.5900, -4.3570, 7.3790

# Complementary

The Complementary color scheme is a pair of colors which are on the opposite of each other on the color wheel.



204.2810, 18.2020, 0.5220



202.7190, -18.2020, -0.5220

# Split Complementary

Split-complementary colors differ from the complementary color scheme. The scheme consists of three colors, the original color and two neighbors of the complement color.



202.8060, -13.8930, 3.9870



204.2810, 18.2020, 0.5220



199.5890, -20.9520, -5.7520

# Square

The Square scheme is like the rectangle color scheme, but the four colors are evenly spaced on the color wheel.



204.2810, 18.2020, 0.5220



200.1960, -6.7840, -9.2160



200.8220, -19.9900, -1.1580



205.5050, 6.1880, 9.0040



# Rectangle

The Rectangle color scheme consists of four colors that form a rectangle on the color wheel.



204.2810, 18.2020, 0.5220



202.4920, 7.0620, -6.8420



200.8220, -19.9900, -1.1580



204.0950, -7.3370, 6.3190

# Sweetspot

The Sweet Spot groups the original color and five complimentary colors.



204.2810, 18.2020, 0.5220



248.8220, 6.3730, 0.1410



198.6850, 14.6690, 14.9970



124.1530, 3.9430, 0.1270



0.0000, 0.0000, 0.0000



128.0000, -0.0000, -0.0000

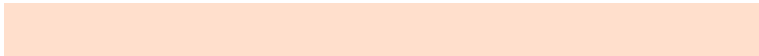


# Same Dimension

The Same Dimension uses a secret algorithm to generate beautiful new colors.



204.2810, 18.2020, 0.5220



230.4020, 25.1710, 0.8750



214.8470, 13.2520, -8.8920



106.6370, 5.4560, 0.2400



91.3660, 86.7460, 2.7940



24.9180, 23.6580, 0.7620

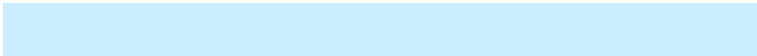


# Inverse Universe

The Inverse Universe completely reimagines the original color for something new.



202.7190, -18.2020, -0.5220



228.5980, -25.1710, -0.8750



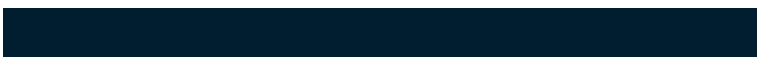
192.1530, -13.2520, 8.8920



106.3630, -5.4560, -0.2400



84.0470, -86.4710, -2.2710

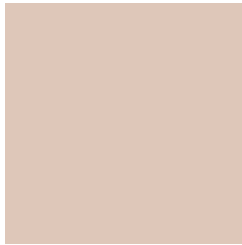


23.0820, -23.6580, -0.7620



# Previews

## White Background



This preview shows how the YIQ color 204.2810, 18.2020, 0.5220 looks on a white background.

## Color Contrast Check

Large Text (above 18pt) WCAG AA × Fail

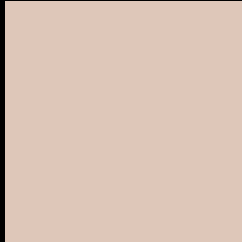
Any Text WCAG AA × Fail

Large Text (above 18pt) WCAG AAA × Fail

Any Text WCAG AAA × Fail



# Black Background



This preview shows how the YIQ color 204.2810, 18.2020, 0.5220 looks on a black background.

## Color Contrast Check

Large Text (above 18pt) WCAG AA ✓ Pass

Any Text WCAG AA ✓ Pass

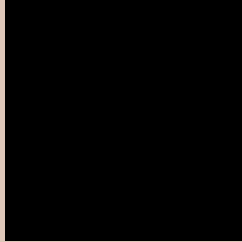
Large Text (above 18pt) WCAG AAA ✓ Pass

Any Text WCAG AAA ✓ Pass

If you want to check with other color combinations, try the [Color Contrast Checker](#).

# YIQ 204.2810, 18.2020, 0.5220

## Background



This preview shows how black text looks on a background with the YIQ color 204.2810, 18.2020, 0.5220.



This preview shows how white text looks on a background with the YIQ color 204.2810, 18.2020,

0.5220.

# Color Blindness Simulation

Color vision deficiency is a very complex topic, and I could not describe the different causes any better than Wikipedia does, so if you want to learn more, you should check out their [article about color blindness](#).

## Dichromacy



### Original Color

204.2810, 18.2020, 0.5220

### Protanopia

203.5680, 9.9040, -3.2800

### Deuteranopia

205.0260, 23.4740, 4.0980



## Tritanopia

205.6800, 13.0650, 11.0250

# Trichromacy



## Original Color

204.2810, 18.2020, 0.5220

## Protanomaly

204.0630, 12.8840, -2.2200

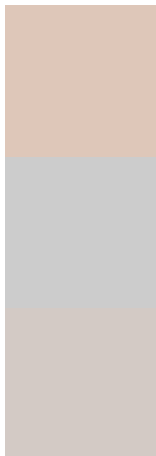
## Deuteranomaly

204.7160, 21.4110, 2.9390

## Tritanomaly

204.9420, 15.0830, 7.4910

# Monochromacy



## Original Color

204.2810, 18.2020, 0.5220

## Achromatopsia

204.0000, -0.0000, -0.0000

## Achromatomaly

204.1210, 6.9690, 0.3530

# CSS Examples

## Text

The CSS property to change the color of the text to YIQ 204.2810, 18.2020, 0.5220 is called "color". The color property can be set on classes, ids or directly on the HTML element.

This example shows how text in the color `rgb(222, 199, 185)` looks like.

```
.text, #text, p{  
    color:rgb(222, 199, 185)  
}
```

If you want to add a text shadow in that color use the text-shadow property, you can generate a text shadow directly with our [CSS Text Shadow Generator](#).

Here you see how black text with a 4 pixel rgb(222, 199, 185) colored shadow looks like.

```
.shadow{ text-shadow: 4px 4px 2px rgb(222, 199, 185) }
```

## Border

The CSS property to change the border of an element to YIQ 204.2810, 18.2020, 0.5220 is called "border". The border property can be set on classes, ids or directly on the HTML element.

This example shows the color as border, it can be applied via the CSS property "border" or "border-color".

```
.border, #border, table{ border:4px solid rgb(222, 199, 185) }
```



If only the border color should be changed use the property border-color.

```
.border{ border-color:rgb(222, 199, 185) }
```

If you want to add a box shadow in that color use:

Here you see how a box with a 4 pixel rgb(222, 199, 185) colored shadow looks like.

```
.boxshadow{ -moz-box-shadow:4px 4px 4px  
4px rgb(222, 199, 185); -webkit-box-  
shadow:4px 4px 4px 4px rgb(222, 199, 185);  
box-shadow:4px 4px 4px 4px rgb(222, 199,  
185) }
```

# Background

The CSS property to change the background color of an element to YIQ 204.2810, 18.2020, 0.5220 is called "background". The background property can be set on classes, ids or directly on the HTML element.

```
.background, #background, body{  
background: rgb(222, 199, 185) }
```

If only the background color should be changed can be used:

```
.background{ background-color: rgb(222,  
199, 185) }
```

This example shows the color as background, it is applied via the CSS property "background".

To optimize and compress your CSS code, you can use our [online CSS compressor and optimizer](#) based on csstidy. If you want to create a linear or radial gradient as background or border, check our [CSS Gradient Generator](#).

Hey! You found this booklet interesting? Support Converting Colors with the new Membership Option!

The pro membership hides all ads, plus gives you double the colors in the color bucket, and more awesome pro features!

**[Learn more, Memberships starting at \\$2.50/m!](#)**

**Follow me  
on Twitter!**

@ConvertingColor