

Converting Colors

YIQ(205.5290, 14.8080, 6.9680)

Have a look what the booklet for
YIQ(205.5290, 14.8080, 6.9680)
contains.

YIQ(205.5290, 14.8080, 6.9680)	3
<i>Conversions</i>	4
<i>Details</i>	6
<i>Harmonies</i>	12
<i>Previews</i>	24
<i>Color Blindness Simulation</i>	28
<i>CSS Examples</i>	31

Color

**YIQ(205.5290, 14.8080,
6.9680)**

Conversions

Conversions Part 1

Format	Color
Hex	E0C5C9
RGB	224, 197, 201
RGB Percent	88%, 77%, 79%
CMY	0.1215, 0.2275, 0.2117
CMYK	0.00, 0.12, 0.10, 0.12
HSL	351°, 30%, 83%
HSV	351°, 12%, 88%
XYZ	61.2537, 59.9951, 63.6189
YIQ	205.5290, 14.8080, 6.9680

Conversions

Conversions Part 2

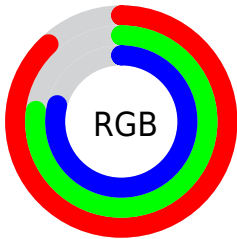
Format	Color
RYB	224, 197, 201
Decimal	14730697
CIELab	81.84, 10.18, 1.48
CIELCh	82, 10.287, 8.277
Yxy	59.9951, 0.3313, 0.3245
Android (android.graphics.Color)	4292920777 (0xFFE0C5C9)
YUV	205.5290, -2.2328, 16.1991
Hunter-Lab	77.4565, 5.6115, 5.5217

Details

The YIQ color $205.5290, 14.8080, 6.9680$ is a light color, and the websafe version is hex `CCCCCC`. A complement of this color would be $215.4710, -14.8080, -6.9680$, and the grayscale version is $206.0000, -0.0000, 0.0000$.

A 20% lighter version of the original color is $254.4130, 0.2750, 0.5230$, and $151.2300, 14.2120, 6.7560$ is the 20% darker color. If you saturate the color by 10%, you get $190.4490, 26.9570, 12.5650$, and if you desaturate by 10%, it is $220.6090, 2.6590, 1.3710$.

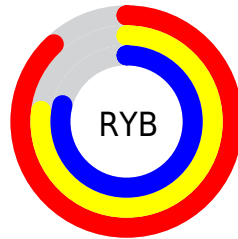
Distribution



Red (88%)

Green (77%)

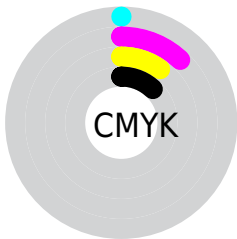
Blue (79%)



Red (88%)

Yellow (77%)

Blue (79%)

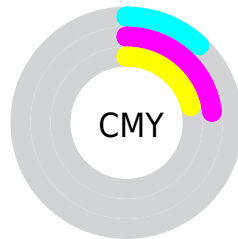


Cyan (0%)

Magenta (12%)

Yellow (10%)

Black (12%)



Cyan (12%)

Magenta (23%)

Yellow (21%)

Brightness & Saturation Gradients

These gradients show how the YIQ color 205.5290, 14.8080, 6.9680 changes by changing the brightness by 10 percent. The first figure shows a shift by +10% for each color and the second figure -10%.

Similar to the brightness gradients but the following saturation gradients show a change of the YIQ color 205.5290, 14.8080, 6.9680 by changing the saturation by 10% instead.

205.5290, 14.8080,
6.9680

205.5290, 14.8080,
6.9680

255.0000, -0.0000,
-0.0000

178.2300, 14.2120,
6.7560

254.4130, 0.2750,
0.5230

151.2300, 14.2120,
6.7560

125.5180, 13.3410,
6.0210

100.3330, 12.4240,
6.1200

76.0340, 11.8280,
5.9080

53.6210, 11.5530,
5.3850

32.0230, 10.3610,

4.9610

■ 8.2300, 14.2120,
6.7560

■ 0.0000, 0.0000,
0.0000

■ 205.5290, 14.8080,
6.9680

■ 205.5290, 14.8080,
6.9680

■ 190.4490, 26.9570,
12.5650

■ 220.6090, 2.6590,
1.3710

■ 174.7820, 39.3810,
18.6850

■ 236.2760, -9.7650,
-4.7490

■ 159.7020, 51.5300,
24.2820

■ 245.7310,
-18.4760, -6.5720

■ 144.0350, 63.9540,
30.4020

■ 128.9550, 76.1030,
35.9990

■ 113.8750, 88.2520,
41.5960

■ 98.2080, 100.6760,
47.7160

■ 83.0140, 113.1460,
53.0020

■ 70.7380, 122.9110,
57.7510

Harmonies

Analogous

The Analogous color harmony consists of three colors that are next to each other on the color wheel.



205.7610, 8.3430, 8.4950



205.5290, 14.8080, 6.9680



205.0900, 17.4220, 3.6460

Triad

The Triadic color harmony groups three colors that are evenly spaced from another and form a triangle on the color wheel.



205.5290, 14.8080, 6.9680



202.1430, 0.7350, -7.8170



201.7300, -16.7350, 0.4250

Complementary

The Complementary color scheme is a pair of colors which are on the opposite of each other on the color wheel.



205.5290, 14.8080, 6.9680



215.4710, -14.8080, -6.9680

Split Complementary

Split-complementary colors differ from the complementary color scheme. The scheme consists of three colors, the original color and two neighbors of the complement color.



201.0130, -19.2100, -4.2820



205.5290, 14.8080, 6.9680



200.9400, -8.9390, -8.7070

Square

The Square scheme is like the rectangle color scheme, but the four colors are evenly spaced on the color wheel.



205.5290, 14.8080, 6.9680



203.2150, 9.4000, -5.1600



200.2860, -15.7250, -6.8690



203.3720, -9.6750, 4.6370

Rectangle

The Rectangle color scheme consists of four colors that form a rectangle on the color wheel.



205.5290, 14.8080, 6.9680



204.7970, 16.6890, 0.4090



200.2860, -15.7250, -6.8690



201.1920, -18.1560, -1.3560

Sweetspot

The Sweet Spot groups the original color and five complimentary colors.



205.5290, 14.8080, 6.9680



248.1040, 5.6390, 2.4310



206.9550, 5.0410, 13.2730



123.2070, 3.8510, 1.7950



0.0000, 0.0000, 0.0000



128.0000, -0.0000, -0.0000

Same Dimension

The Same Dimension uses a secret algorithm to generate beautiful new colors.



205.5290, 14.8080, 6.9680



230.4480, 19.5300, 9.4980



210.3560, 13.6170, 1.0170



104.5170, 5.9140, 2.9540



55.5880, 96.5500, 45.3980



15.1500, 26.3610, 12.3530

Inverse Universe

The Inverse Universe completely reimagines the original color for something new.



205.5290, 14.8080, 6.9680



230.4480, 19.5300, 9.4980



210.6440, -13.6170, -1.0170



104.5170, 5.9140, 2.9540



55.5880, 96.5500, 45.3980



15.1500, 26.3610, 12.3530

Previews

White Background



This preview shows how the YIQ color 205.5290, 14.8080, 6.9680 looks on a white background.

Color Contrast Check

Large Text (above 18pt) WCAG AA × Fail

Any Text WCAG AA × Fail

Large Text (above 18pt) WCAG AAA × Fail

Any Text WCAG AAA × Fail

Black Background



This preview shows how the YIQ color 205.5290, 14.8080, 6.9680 looks on a black background.

Color Contrast Check

Large Text (above 18pt) WCAG AA ✓ Pass

Any Text WCAG AA ✓ Pass

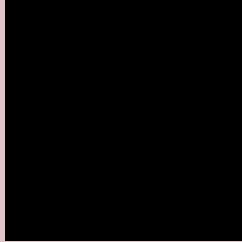
Large Text (above 18pt) WCAG AAA ✓ Pass

Any Text WCAG AAA ✓ Pass

If you want to check with other color combinations, try the [Color Contrast Checker](#).

YIQ 205.5290, 14.8080, 6.9680

Background



This preview shows how black text looks on a background with the YIQ color 205.5290, 14.8080, 6.9680.



This preview shows how white text looks on a background with the YIQ color 205.5290, 14.8080,

6.9680.

Color Blindness Simulation

Color vision deficiency is a very complex topic, and I could not describe the different causes any better than Wikipedia does, so if you want to learn more, you should check out their [article about color blindness](#).

Dichromacy



Original Color

205.5290, 14.8080, 6.9680

Protanopia

204.3100, 2.0630, 1.1590

Deuteranopia

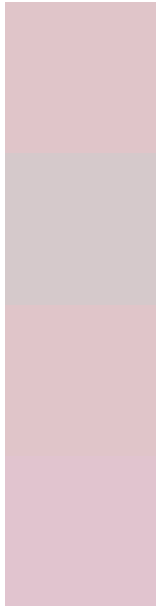
205.5290, 14.8080, 6.9680



Tritanopia

205.7940, 12.7440, 11.3360

Trichromacy



Original Color

205.5290, 14.8080, 6.9680

Protanomaly

204.8160, 6.5100, 3.1660

Deuteranomaly

205.5290, 14.8080, 6.9680

Tritanomaly

205.9250, 13.7530, 9.5690

Monochromacy



Original Color

205.5290, 14.8080, 6.9680

Achromatopsia

206.0000, -0.0000, 0.0000

Achromatomaly

206.1040, 5.6390, 2.4310

CSS Examples

Text

The CSS property to change the color of the text to YIQ 205.5290, 14.8080, 6.9680 is called "color". The color property can be set on classes, ids or directly on the HTML element.

This example shows how text in the color `rgb(224, 197, 201)` looks like.

```
.text, #text, p{  
    color:rgb(224, 197, 201)  
}
```

If you want to add a text shadow in that color use the text-shadow property, you can generate a text shadow directly with our [CSS Text Shadow Generator](#).

Here you see how black text with a 4 pixel rgb(224, 197, 201) colored shadow looks like.

```
.shadow{ text-shadow: 4px 4px 2px rgb(224, 197, 201) }
```

Border

The CSS property to change the border of an element to YIQ 205.5290, 14.8080, 6.9680 is called "border". The border property can be set on classes, ids or directly on the HTML element.

This example shows the color as border, it can be applied via the CSS property "border" or "border-color".

```
.border, #border, table{ border:4px solid rgb(224, 197, 201) }
```


If only the border color should be changed use the property `border-color`.

```
.border{ border-color:rgb(224, 197, 201) }
```

If you want to add a box shadow in that color use:

Here you see how a box with a 4 pixel `rgb(224, 197, 201)` colored shadow looks like.

```
.boxshadow{ -moz-box-shadow:4px 4px 4px  
4px rgb(224, 197, 201); -webkit-box-  
shadow:4px 4px 4px 4px rgb(224, 197, 201);  
box-shadow:4px 4px 4px 4px rgb(224, 197,  
201) }
```

Background

The CSS property to change the background color of an element to YIQ 205.5290, 14.8080, 6.9680 is called "background". The background property can be set on classes, ids or directly on the HTML element.

```
.background, #background, body{  
background: rgb(224, 197, 201) }
```

If only the background color should be changed can be used:

```
.background{ background-color: rgb(224,  
197, 201) }
```

This example shows the color as background, it is applied via the CSS property "background".

To optimize and compress your CSS code, you can use our [online CSS compressor and optimizer](#) based on csstidy. If you want to create a linear or radial gradient as background or border, check our [CSS Gradient Generator](#).

Hey! You found this booklet interesting? Support Converting Colors with the new Membership Option!

The pro membership hides all ads, plus gives you double the colors in the color bucket, and more awesome pro features!

[Learn more, Memberships starting at \\$2.50/m!](#)

**Follow me
on Twitter!**

@ConvertingColor