

# Converting Colors

YIQ(205.5650, 23.1540, -1.1180)

Have a look what the booklet for  
YIQ(205.5650, 23.1540, -1.1180)  
contains.

<b>YIQ(205.5650, 23.1540, -1.1180)</b> .....	3
<b><i>Conversions</i></b> .....	4
<b><i>Details</i></b> .....	6
<b><i>Harmonies</i></b> .....	12
<b><i>Previews</i></b> .....	24
<b><i>Color Blindness Simulation</i></b> .....	28
<b><i>CSS Examples</i></b> .....	31

# Color

**YIQ(205.5650, 23.1540,  
-1.1180)**

# Conversions

## Conversions Part 1

Format	Color
Hex	E3C8B2
RGB	227, 200, 178
RGB Percent	89%, 78%, 70%
CMY	0.1098, 0.2157, 0.3018
CMYK	0.00, 0.12, 0.22, 0.11
HSL	27°, 47%, 79%
HSV	27°, 22%, 89%
XYZ	60.3729, 60.8517, 50.6977
YIQ	205.5650, 23.1540, -1.1180

# Conversions

## Conversions Part 2

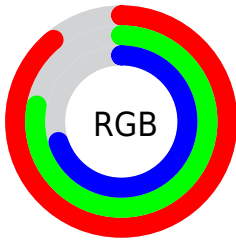
Format	Color
R <sub>YB</sub>	227, 218, 178
Decimal	14928050
CIE Lab	82.30, 6.10, 14.47
CIE LCh	82, 15.701, 67.128
Yxy	60.8517, 0.3512, 0.3539
Android (android.graphics.Color)	4293118130 (0xFFE3C8B2)
YUV	205.5650, -13.5895, 18.7985
Hunter-Lab	78.0075, 1.6347, 16.0722

# Details

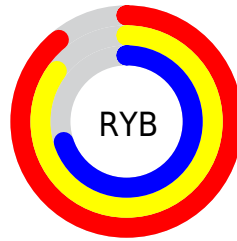
The YIQ color  $205.5650, 23.1540, -1.1180$  is a light color, and the websafe version is hex  $\text{FFCCCC}$ . A complement of this color would be  $199.4350, -23.1540, 1.1180$ , and the grayscale version is  $206.0000, -0.0000, 0.0000$ .

A 20% lighter version of the original color is  $252.6060, 6.7410, -6.5310$ , and  $151.0810, 21.6410, -1.2310$  is the 20% darker color. If you saturate the color by 10%, you get  $195.3120, 34.1120, -1.4720$ , and if you desaturate by 10%, it is  $215.8180, 12.1960, -0.7640$ .

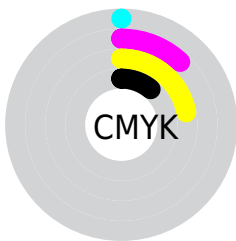
# Distribution



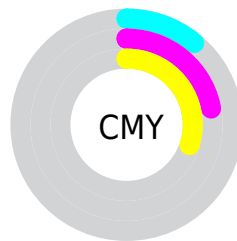
- Red (89%)
- Green (78%)
- Blue (70%)



- Red (89%)
- Yellow (85%)
- Blue (70%)



- Cyan (0%)
- Magenta (12%)
- Yellow (22%)
- Black (11%)




- Cyan (11%)
- Magenta (22%)
- Yellow (30%)


# Brightness & Saturation Gradients

These gradients show how the YIQ color 205.5650, 23.1540, -1.1180 changes by changing the brightness by 10 percent. The first figure shows a shift by +10% for each color and the second figure -10%.


Similar to the brightness gradients but the following saturation gradients show a change of the YIQ color 205.5650, 23.1540, -1.1180 by changing the saturation by 10% instead.




 205.5650, 23.1540,  
-1.1180


 205.5650, 23.1540,  
-1.1180


255.0000, -0.0000,  
-0.0000


 178.2660, 22.5580,  
-1.3300


 252.6060, 6.7410,  
-6.5310

 151.0810, 21.6410,  
-1.2310

 124.8960, 20.7240,  
-1.1320

 100.2980, 19.5320,  
-1.5560

 76.2270, 18.2940,  
-1.1460

 53.6290, 17.1020,  
-1.5700

 31.9170, 16.2310,

-2.3050

■ 8.6380, 12.8830,  
3.3070

■ 0.0000, 0.0000,  
0.0000

■ 205.5650, 23.1540,  
-1.1180

■ 205.5650, 23.1540,  
-1.1180

■ 195.3120, 34.1120,  
-1.4720

■ 215.8180, 12.1960,  
-0.7640

■ 185.7600, 44.4740,  
-2.0380

■ 225.3700, 1.8340,  
-0.1980

■ 175.5070, 55.4320,  
-2.3920

■ 235.6230, -9.1240,  
0.1560

■ 165.8410, 66.1150,  
-3.2690

■ 243.6930,  
-15.3130, -3.3210

■ 155.7020, 76.7520,  
-3.3120

■ 246.6280,  
-16.6880, -5.9360

■ 146.0360, 87.4350,  
-4.1890

■ 135.7830, 98.3930,  
-4.5430

■ 127.7470,  
107.2420, -5.2220

# Harmonies

## Analogous

The Analogous color harmony consists of three colors that are next to each other on the color wheel.



206.7490, 25.8120, 5.7800



205.5650, 23.1540, -1.1180



204.0860, 14.0770, -7.3230

# Triad

The Triadic color harmony groups three colors that are evenly spaced from another and form a triangle on the color wheel.



205.5650, 23.1540, -1.1180



199.8610, -24.8940, -11.4060



206.7800, -1.8360, 11.2520

# Complementary

The Complementary color scheme is a pair of colors which are on the opposite of each other on the color wheel.



205.5650, 23.1540, -1.1180



199.4350, -23.1540, 1.1180

# Split Complementary

Split-complementary colors differ from the complementary color scheme. The scheme consists of three colors, the original color and two neighbors of the complement color.



204.7180, -16.4610, 6.4750



205.5650, 23.1540, -1.1180



199.6850, -30.0300, -6.4300

# Square

The Square scheme is like the rectangle color scheme, but the four colors are evenly spaced on the color wheel.



205.5650, 23.1540, -1.1180



200.2660, -12.9730, -12.6930



201.6410, -26.7300, -0.1540



207.5490, 12.0560, 12.7920



# Rectangle

The Rectangle color scheme consists of four colors that form a rectangle on the color wheel.



205.5650, 23.1540, -1.1180



202.7860, 6.0540, -10.6020



201.6410, -26.7300, -0.1540



205.9150, -6.6500, 10.3900

# Sweetspot

The Sweet Spot groups the original color and five complimentary colors.



205.5650, 23.1540, -1.1180



248.5940, 7.0150, -0.4810



195.8430, 20.2160, 19.0960



124.0390, 4.2640, -0.1840



0.0000, 0.0000, 0.0000



128.0000, -0.0000, -0.0000



# Same Dimension

The Same Dimension uses a secret algorithm to generate beautiful new colors.



205.5650, 23.1540, -1.1180



225.7570, 31.3610, -1.1750



219.6530, 16.5540, -13.6700



109.5230, 5.7770, -0.0710



100.4810, 84.6840, -3.8920



28.7500, 24.0710, -1.2170

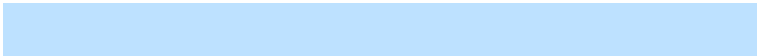


# Inverse Universe

The Inverse Universe completely reimagines the original color for something new.



199.4350, -23.1540, 1.1180



217.6560, -31.0860, 1.6980



185.3470, -16.5540, 13.6700



108.4770, -5.7770, 0.0710



77.9320, -84.4090, 4.4150

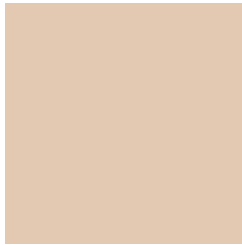


22.2500, -24.0710, 1.2170



# Previews

## White Background



This preview shows how the YIQ color 205.5650, 23.1540, -1.1180 looks on a white background.

## Color Contrast Check

Large Text (above 18pt) WCAG AA × Fail

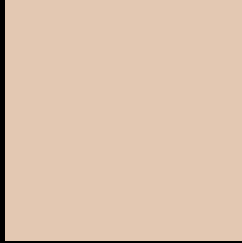
Any Text WCAG AA × Fail

Large Text (above 18pt) WCAG AAA × Fail

Any Text WCAG AAA × Fail



# Black Background



This preview shows how the YIQ color 205.5650, 23.1540, -1.1180 looks on a black background.

## Color Contrast Check

Large Text (above 18pt) WCAG AA ✓ Pass

Any Text WCAG AA ✓ Pass

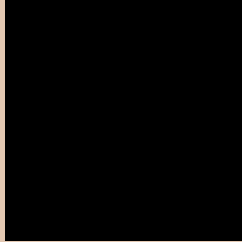
Large Text (above 18pt) WCAG AAA ✓ Pass

Any Text WCAG AAA ✓ Pass

If you want to check with other color combinations, try the [Color Contrast Checker](#).

# YIQ 205.5650, 23.1540, -1.1180

## Background



This preview shows how black text looks on a background with the YIQ color 205.5650, 23.1540, -1.1180.



This preview shows how white text looks on a background with the YIQ color 205.5650, 23.1540,

-1.1180.

# Color Blindness Simulation

Color vision deficiency is a very complex topic, and I could not describe the different causes any better than Wikipedia does, so if you want to learn more, you should check out their [article about color blindness](#).

## Dichromacy



### Original Color

205.5650, 23.1540, -1.1180

### Protanopia

204.2540, 13.6640, -5.3440

### Deuteranopia

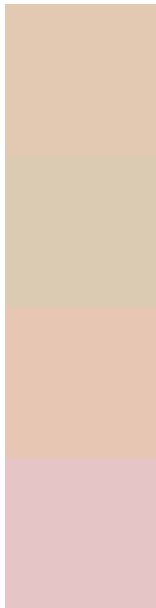
206.0110, 27.8300, 2.2460



## Tritanopia

207.5880, 16.3200, 12.6080

# Trichromacy



## Original Color

205.5650, 23.1540, -1.1180

## Protanomaly

205.0480, 17.2400, -4.0720

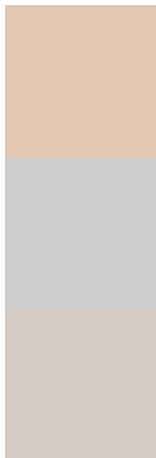
## Deuteranomaly

205.7010, 25.7670, 1.0870

## Tritanomaly

207.0950, 19.0260, 7.6180

# Monochromacy



## Original Color

205.5650, 23.1540, -1.1180

## Achromatopsia

206.0000, -0.0000, 0.0000

## Achromatomaly

206.0780, 8.5280, -0.3680

# CSS Examples

## Text

The CSS property to change the color of the text to YIQ 205.5650, 23.1540, -1.1180 is called "color". The color property can be set on classes, ids or directly on the HTML element.

This example shows how text in the color `rgb(227, 200, 178)` looks like.

```
.text, #text, p{  
    color:rgb(227, 200, 178)  
}
```

If you want to add a text shadow in that color use the text-shadow property, you can generate a text shadow directly with our [CSS Text Shadow Generator](#).

Here you see how black text with a 4 pixel rgb(227, 200, 178) colored shadow looks like.

```
.shadow{ text-shadow: 4px 4px 2px rgb(227, 200, 178) }
```

## Border

The CSS property to change the border of an element to YIQ 205.5650, 23.1540, -1.1180 is called "border". The border property can be set on classes, ids or directly on the HTML element.

This example shows the color as border, it can be applied via the CSS property "border" or "border-color".

```
.border, #border, table{ border:4px solid rgb(227, 200, 178) }
```



If only the border color should be changed use the property border-color.

```
.border{ border-color:rgb(227, 200, 178) }
```

If you want to add a box shadow in that color use:

Here you see how a box with a 4 pixel rgb(227, 200, 178) colored shadow looks like.

```
.boxshadow{ -moz-box-shadow:4px 4px 4px  
4px rgb(227, 200, 178); -webkit-box-  
shadow:4px 4px 4px 4px rgb(227, 200, 178);  
box-shadow:4px 4px 4px 4px rgb(227, 200,  
178) }
```

# Background

The CSS property to change the background color of an element to YIQ 205.5650, 23.1540, -1.1180 is called "background". The background property can be set on classes, ids or directly on the HTML element.

```
.background, #background, body{  
background: rgb(227, 200, 178) }
```

If only the background color should be changed can be used:

```
.background{ background-color: rgb(227,  
200, 178) }
```

This example shows the color as background, it is applied via the CSS property "background".

To optimize and compress your CSS code, you can use our [online CSS compressor and optimizer](#) based on csstidy. If you want to create a linear or radial gradient as background or border, check our [CSS Gradient Generator](#).

Hey! You found this booklet interesting? Support Converting Colors with the new Membership Option!

The pro membership hides all ads, plus gives you double the colors in the color bucket, and more awesome pro features!

**[Learn more, Memberships starting at \\$2.50/m!](#)**

**Follow me  
on Twitter!**

@ConvertingColor