

Converting Colors

YIQ(205.9150, 10.5450, 1.6250)

Have a look what the booklet for
YIQ(205.9150, 10.5450, 1.6250)
contains.

YIQ(205.9150, 10.5450, 1.6250)	3
<i>Conversions</i>	4
<i>Details</i>	6
<i>Harmonies</i>	12
<i>Previews</i>	24
<i>Color Blindness Simulation</i>	28
<i>CSS Examples</i>	31

Color

**YIQ(205.9150, 10.5450,
1.6250)**

Conversions

Conversions Part 1

Format	Color
Hex	D9CAC5
RGB	217, 202, 197
RGB Percent	85%, 79%, 77%
CMY	0.1490, 0.2078, 0.2274
CMYK	0.00, 0.07, 0.09, 0.15
HSL	15°, 21%, 81%
HSV	15°, 9%, 85%
XYZ	59.8162, 61.0228, 61.4563
YIQ	205.9150, 10.5450, 1.6250

Conversions

Conversions Part 2

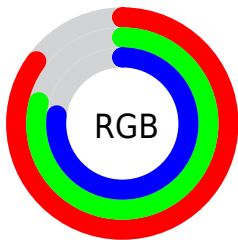
Format	Color
R _Y B	217, 204, 197
Decimal	14273221
CIE Lab	82.39, 4.38, 4.36
CIE LCh	82, 6.177, 44.835
Yxy	61.0228, 0.3281, 0.3347
Android (android.graphics.Color)	4292463301 (0xFFD9CAC5)
YUV	205.9150, -4.3951, 9.7215
Hunter-Lab	78.1171, -0.0232, 8.0374

Details

The YIQ color $205.9150, 10.5450, 1.6250$ is a light color, and the websafe version is hex $CCCCCC$. A complement of this color would be $208.0850, -10.5450, -1.6250$, and the grayscale version is $206.0000, -0.0000, 0.0000$.

A 20% lighter version of the original color is $254.8860, 0.3210, -0.3110$, and $151.6160, 9.9490, 1.4130$ is the 20% darker color. If you saturate the color by 10%, you get $194.0150, 22.0070, 3.1510$, and if you desaturate by 10%, it is $217.8150, -0.9170, 0.0990$.

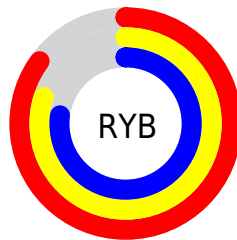
Distribution



Red (85%)

Green (79%)

Blue (77%)



Red (85%)

Yellow (80%)

Blue (77%)

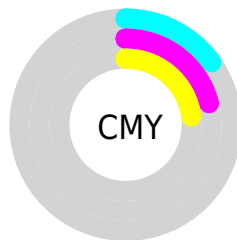


Cyan (0%)

Magenta (7%)

Yellow (9%)

Black (15%)



Cyan (15%)

Magenta (21%)

Yellow (23%)

Brightness & Saturation Gradients

These gradients show how the YIQ color 205.9150, 10.5450, 1.6250 changes by changing the brightness by 10 percent. The first figure shows a shift by +10% for each color and the second figure -10%.

Similar to the brightness gradients but the following saturation gradients show a change of the YIQ color 205.9150, 10.5450, 1.6250 by changing the saturation by 10% instead.

■ 205.9150, 10.5450,
1.6250

■ 205.9150, 10.5450,
1.6250

255.0000, -0.0000,
-0.0000

■ 178.6160, 9.9490,
1.4130

254.8860, 0.3210,
-0.3110

■ 151.6160, 9.9490,
1.4130

■ 125.7300, 9.6280,
1.7240

■ 100.4310, 9.0320,
1.5120

■ 77.1320, 8.4360,
1.3000

■ 54.1320, 8.4360,
1.3000

■ 32.5340, 7.2440,

0.8760

■ 9.2140, 11.1410,
1.8370

■ 0.0000, 0.0000,
0.0000

■ 205.9150, 10.5450,
1.6250

■ 205.9150, 10.5450,
1.6250

■ 194.0150, 22.0070,
3.1510

■ 217.8150, -0.9170,
0.0990

■ 181.6420, 33.4230,
5.5110

■ 230.1880,
-12.3330, -2.2610

■ 169.7420, 44.8850,
7.0370

■ 241.2900,
-21.5480, -5.9640

■ 157.8420, 56.3470,
8.5630

■ 243.6380,
-22.6480, -8.0560

■ 146.0560, 67.4880,
10.4000

■ 133.5690, 79.2250,
12.4490

■ 121.6690, 90.6870,
13.9750

■ 109.7690,
102.1490, 15.5010

■ 97.3960, 113.5650,
17.8610

Harmonies

Analogous

The Analogous color harmony consists of three colors that are next to each other on the color wheel.



206.1970, 9.8110, 3.9150



205.9150, 10.5450, 1.6250



205.5510, 8.5740, -1.2020

Triad

The Triadic color harmony groups three colors that are evenly spaced from another and form a triangle on the color wheel.



205.9150, 10.5450, 1.6250



203.1300, -6.4180, -4.8340



205.0690, -4.4480, 3.5200

Complementary

The Complementary color scheme is a pair of colors which are on the opposite of each other on the color wheel.



205.9150, 10.5450, 1.6250



208.0850, -10.5450, -1.6250

Split Complementary

Split-complementary colors differ from the complementary color scheme. The scheme consists of three colors, the original color and two neighbors of the complement color.



204.1500, -9.1700, 0.9900



205.9150, 10.5450, 1.6250



203.5040, -10.4070, -4.1270

Square

The Square scheme is like the rectangle color scheme, but the four colors are evenly spaced on the color wheel.



205.9150, 10.5450, 1.6250



203.7670, -0.9620, -4.5940



203.7860, -11.1410, -1.8370



206.2330, 0.9620, 4.5940

Rectangle

The Rectangle color scheme consists of four colors that form a rectangle on the color wheel.



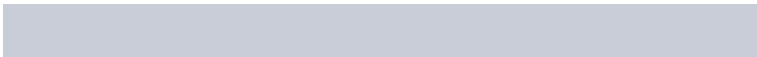
205.9150, 10.5450, 1.6250



204.8280, 6.2360, -2.8840



203.7860, -11.1410, -1.8370



204.7590, -6.5110, 2.3610

Sweetspot

The Sweet Spot groups the original color and five complimentary colors.



205.9150, 10.5450, 1.6250



250.5660, 4.2180, 0.6500



204.6900, 7.1050, 8.9050



124.9680, 3.0260, 0.2260



0.0000, 0.0000, 0.0000



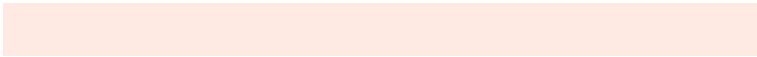
128.0000, -0.0000, -0.0000

Same Dimension

The Same Dimension uses a secret algorithm to generate beautiful new colors.



205.9150, 10.5450, 1.6250



239.4810, 14.7630, 2.2750



211.7850, 7.7950, -3.6050



103.4630, 6.0060, 1.2860



76.9680, 91.2830, 14.1870



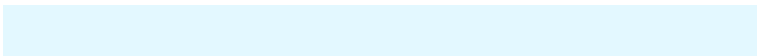
20.2110, 24.3910, 3.9990

Inverse Universe

The Inverse Universe completely reimagines the original color for something new.



208.0850, -10.5450, -1.6250



242.5190, -14.7630, -2.2750



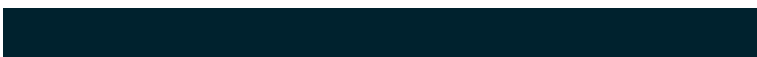
202.2150, -7.7950, 3.6050



104.9500, -5.7310, -0.7630



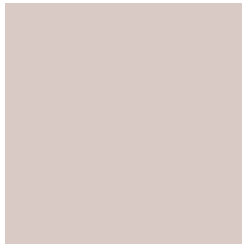
96.0320, -91.2830, -14.1870



25.2020, -24.1160, -3.4760

Previews

White Background



This preview shows how the YIQ color 205.9150, 10.5450, 1.6250 looks on a white background.

Color Contrast Check

Large Text (above 18pt) WCAG AA × Fail

Any Text WCAG AA × Fail

Large Text (above 18pt) WCAG AAA × Fail

Any Text WCAG AAA × Fail

Black Background



This preview shows how the YIQ color 205.9150, 10.5450, 1.6250 looks on a black background.

Color Contrast Check

Large Text (above 18pt) WCAG AA ✓ Pass

Any Text WCAG AA ✓ Pass

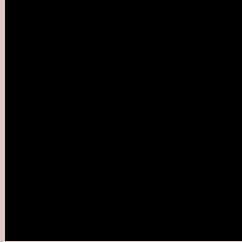
Large Text (above 18pt) WCAG AAA ✓ Pass

Any Text WCAG AAA ✓ Pass

If you want to check with other color combinations, try the [Color Contrast Checker](#).

YIQ 205.9150, 10.5450, 1.6250

Background



This preview shows how black text looks on a background with the YIQ color 205.9150, 10.5450, 1.6250.



This preview shows how white text looks on a background with the YIQ color 205.9150, 10.5450,

1.6250.

Color Blindness Simulation

Color vision deficiency is a very complex topic, and I could not describe the different causes any better than Wikipedia does, so if you want to learn more, you should check out their [article about color blindness](#).

Dichromacy



Original Color

205.9150, 10.5450, 1.6250

Protanopia

205.1100, 5.5020, -0.5940

Deuteranopia

206.6710, 17.2840, 6.1480



Tritanopia

207.1030, 7.3800, 9.4280

Trichromacy



Original Color

205.9150, 10.5450, 1.6250

Protanomaly

205.4200, 7.5650, 0.5650

Deuteranomaly

206.0620, 14.6250, 4.7770

Tritanomaly

206.5930, 8.7560, 6.5160

Monochromacy



Original Color

205.9150, 10.5450, 1.6250

Achromatopsia

206.0000, -0.0000, 0.0000

Achromatomaly

206.2670, 3.6220, 0.4380

CSS Examples

Text

The CSS property to change the color of the text to YIQ 205.9150, 10.5450, 1.6250 is called "color". The color property can be set on classes, ids or directly on the HTML element.

This example shows how text in the color `rgb(217, 202, 197)` looks like.

```
.text, #text, p{  
    color:rgb(217, 202, 197)  
}
```

If you want to add a text shadow in that color use the text-shadow property, you can generate a text shadow directly with our [CSS Text Shadow Generator](#).

Here you see how black text with a 4 pixel rgb(217, 202, 197) colored shadow looks like.

```
.shadow{ text-shadow: 4px 4px 2px rgb(217, 202, 197) }
```

Border

The CSS property to change the border of an element to YIQ 205.9150, 10.5450, 1.6250 is called "border". The border property can be set on classes, ids or directly on the HTML element.

This example shows the color as border, it can be applied via the CSS property "border" or "border-color".

```
.border, #border, table{ border:4px solid rgb(217, 202, 197) }
```


If only the border color should be changed use the property `border-color`.

```
.border{ border-color:rgb(217, 202, 197) }
```

If you want to add a box shadow in that color use:

Here you see how a box with a 4 pixel `rgb(217, 202, 197)` colored shadow looks like.

```
.boxshadow{ -moz-box-shadow:4px 4px 4px  
4px rgb(217, 202, 197); -webkit-box-  
shadow:4px 4px 4px 4px rgb(217, 202, 197);  
box-shadow:4px 4px 4px 4px rgb(217, 202,  
197) }
```

Background

The CSS property to change the background color of an element to YIQ 205.9150, 10.5450, 1.6250 is called "background". The background property can be set on classes, ids or directly on the HTML element.

```
.background, #background, body{  
background: rgb(217, 202, 197) }
```

If only the background color should be changed can be used:

```
.background{ background-color: rgb(217,  
202, 197) }
```

This example shows the color as background, it is applied via the CSS property "background".

To optimize and compress your CSS code, you can use our [online CSS compressor and optimizer](#) based on csstidy. If you want to create a linear or radial gradient as background or border, check our [CSS Gradient Generator](#).

Hey! You found this booklet interesting? Support Converting Colors with the new Membership Option!

The pro membership hides all ads, plus gives you double the colors in the color bucket, and more awesome pro features!

[Learn more, Memberships starting at \\$2.50/m!](#)

**Follow me
on Twitter!**

@ConvertingColor