

Converting Colors

YIQ(206.1870, 15.7710, 6.0350)

Have a look what the booklet for
YIQ(206.1870, 15.7710, 6.0350)
contains.

- YIQ(206.1870, 15.7710, 6.0350) 3**
- Conversions* 4**
- Details* 6**
- Harmonies* 12**
- Previews* 24**
- Color Blindness Simulation* 28**
- CSS Examples* 31**

Color

**YIQ(206.1870, 15.7710,
6.0350)**

Conversions

Conversions Part 1

Format	Color
Hex	E1C6C7
RGB	225, 198, 199
RGB Percent	88%, 78%, 78%
CMY	0.1176, 0.2236, 0.2195
CMYK	0.00, 0.12, 0.12, 0.12
HSL	358°, 31%, 83%
HSV	358°, 12%, 88%
XYZ	61.5586, 60.5174, 62.4790
YIQ	206.1870, 15.7710, 6.0350

Conversions

Conversions Part 2

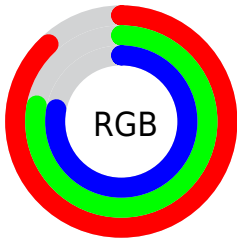
Format	Color
R _Y B	225, 198, 199
Decimal	14796487
CIE Lab	82.12, 9.68, 2.97
CIE LCh	82, 10.122, 17.086
Yxy	60.5174, 0.3336, 0.3279
Android (android.graphics.Color)	4292986567 (0xFFE1C6C7)
YUV	206.1870, -3.5432, 16.4990
Hunter-Lab	77.7930, 5.1118, 6.8366

Details

The YIQ color $206.1870, 15.7710, 6.0350$ is a light color, and the websafe version is hex $CCCCCC$. A complement of this color would be $216.8130, -15.7710, -6.0350$, and the grayscale version is $206.0000, -0.0000, 0.0000$.

A 20% lighter version of the original color is $255.0000, -0.0000, -0.0000$, and $151.8880, 15.1750, 5.8230$ is the 20% darker color. If you saturate the color by 10%, you get $190.1780, 29.1580, 11.2220$, and if you desaturate by 10%, it is $221.6090, 2.6590, 1.3710$.

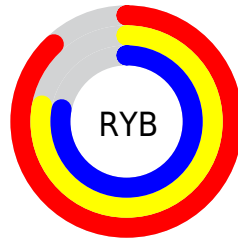
Distribution



Red (88%)

Green (78%)

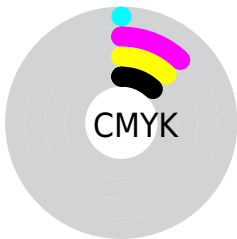
Blue (78%)



Red (88%)

Yellow (78%)

Blue (78%)

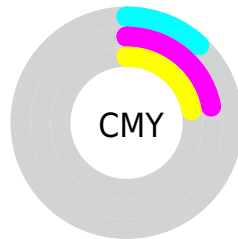


Cyan (0%)

Magenta (12%)

Yellow (12%)

Black (12%)



Cyan (12%)

Magenta (22%)

Yellow (22%)

Brightness & Saturation Gradients

These gradients show how the YIQ color 206.1870, 15.7710, 6.0350 changes by changing the brightness by 10 percent. The first figure shows a shift by +10% for each color and the second figure -10%.

Similar to the brightness gradients but the following saturation gradients show a change of the YIQ color 206.1870, 15.7710, 6.0350 by changing the saturation by 10% instead.

■ 206.1870, 15.7710,
6.0350

■ 206.1870, 15.7710,
6.0350

255.0000, -0.0000,
-0.0000

■ 178.8880, 15.1750,
5.8230

■ 151.8880, 15.1750,
5.8230

■ 125.7030, 14.2580,
5.9220

■ 100.9910, 13.3870,
5.1870

■ 76.6920, 12.7910,
4.9750

■ 54.0940, 11.5990,
4.5510

■ 32.7950, 11.0030,

4.3390

■ 8.1870, 15.7710,
6.0350

■ 0.0000, 0.0000,
0.0000

■ 206.1870, 15.7710,
6.0350

■ 206.1870, 15.7710,
6.0350

■ 190.1780, 29.1580,
11.2220

■ 221.6090, 2.6590,
1.3710

■ 174.8700, 41.9490,
16.1970

■ 237.5040,
-10.4070, -4.1270

■ 158.8610, 55.3360,
21.3840

■ 246.0300,
-17.8800, -6.3600

■ 143.4390, 68.4480,
26.0480

■ 127.5440, 81.5140,
31.5460

■ 112.1220, 94.6260,
36.2100

■ 96.1130, 108.0130,
41.3970

■ 80.8050, 120.8040,
46.3720

■ 68.3010, 131.2110,
50.4990

Harmonies

Analogous

The Analogous color harmony consists of three colors that are next to each other on the color wheel.



206.1310, 10.1770, 8.2970



206.1870, 15.7710, 6.0350



205.2640, 16.8720, 2.6000

Triad

The Triadic color harmony groups three colors that are evenly spaced from another and form a triangle on the color wheel.



206.1870, 15.7710, 6.0350



202.1750, -2.2910, -8.0430



203.0400, -14.6720, 1.5840

Complementary

The Complementary color scheme is a pair of colors which are on the opposite of each other on the color wheel.



206.1870, 15.7710, 6.0350



216.8130, -15.7710, -6.0350

Split Complementary

Split-complementary colors differ from the complementary color scheme. The scheme consists of three colors, the original color and two neighbors of the complement color.



201.9530, -18.9810, -2.9250



206.1870, 15.7710, 6.0350



201.6840, -11.0940, -8.1980

Square

The Square scheme is like the rectangle color scheme, but the four colors are evenly spaced on the color wheel.



206.1870, 15.7710, 6.0350



203.1330, 6.6950, -5.6970



201.2150, -16.9630, -6.4590



204.5680, -7.2910, 5.4850

Rectangle

The Rectangle color scheme consists of four colors that form a rectangle on the color wheel.



206.1870, 15.7710, 6.0350



204.7860, 15.2220, -0.5380



201.2150, -16.9630, -6.4590



202.6160, -16.4140, 0.1140

Sweetspot

The Sweet Spot groups the original color and five complimentary colors.



206.1870, 15.7710, 6.0350



247.9900, 5.9600, 2.1200



208.8520, 6.8290, 13.9090



123.0930, 4.1720, 1.4840



0.0000, 0.0000, 0.0000



128.0000, -0.0000, -0.0000

Same Dimension

The Same Dimension uses a secret algorithm to generate beautiful new colors.



206.1870, 15.7710, 6.0350



229.9920, 20.8140, 8.2540



213.1170, 12.7920, -0.5520



104.2890, 6.5560, 2.3320



53.4220, 102.6490, 39.4890



14.5800, 27.9660, 10.7980

Inverse Universe

The Inverse Universe completely reimagines the original color for something new.



206.1870, 15.7710, 6.0350



229.9920, 20.8140, 8.2540



209.8830, -12.7920, 0.5520



104.2890, 6.5560, 2.3320



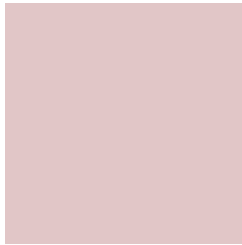
53.4220, 102.6490, 39.4890



14.5800, 27.9660, 10.7980

Previews

White Background



This preview shows how the YIQ color 206.1870, 15.7710, 6.0350 looks on a white background.

Color Contrast Check

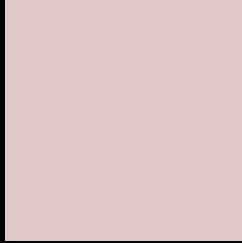
Large Text (above 18pt) WCAG AA × Fail

Any Text WCAG AA × Fail

Large Text (above 18pt) WCAG AAA × Fail

Any Text WCAG AAA × Fail

Black Background



This preview shows how the YIQ color 206.1870, 15.7710, 6.0350 looks on a black background.

Color Contrast Check

Large Text (above 18pt) WCAG AA ✓ Pass

Any Text WCAG AA ✓ Pass

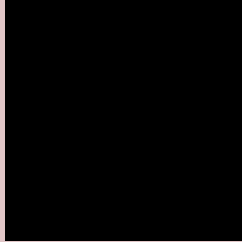
Large Text (above 18pt) WCAG AAA ✓ Pass

Any Text WCAG AAA ✓ Pass

If you want to check with other color combinations, try the [Color Contrast Checker](#).

YIQ 206.1870, 15.7710, 6.0350

Background



This preview shows how black text looks on a background with the YIQ color 206.1870, 15.7710, 6.0350.



This preview shows how white text looks on a background with the YIQ color 206.1870, 15.7710,

6.0350.

Color Blindness Simulation

Color vision deficiency is a very complex topic, and I could not describe the different causes any better than Wikipedia does, so if you want to learn more, you should check out their [article about color blindness](#).

Dichromacy



Original Color

206.1870, 15.7710, 6.0350

Protanopia

204.3810, 3.3010, 0.7490

Deuteranopia

206.4860, 16.3670, 6.2470



Tritanopia

206.9790, 13.6610, 11.2370

Trichromacy



Original Color

206.1870, 15.7710, 6.0350

Protanomaly

204.8870, 7.7480, 2.7560

Deuteranomaly

206.4860, 16.3670, 6.2470

Tritanomaly

206.8110, 14.0740, 9.2580

Monochromacy



Original Color

206.1870, 15.7710, 6.0350

Achromatopsia

206.0000, -0.0000, 0.0000

Achromatomaly

205.9900, 5.9600, 2.1200

CSS Examples

Text

The CSS property to change the color of the text to YIQ 206.1870, 15.7710, 6.0350 is called "color". The color property can be set on classes, ids or directly on the HTML element.

This example shows how text in the color `rgb(225, 198, 199)` looks like.

```
.text, #text, p{  
    color:rgb(225, 198, 199)  
}
```

If you want to add a text shadow in that color use the text-shadow property, you can generate a text shadow directly with our [CSS Text Shadow Generator](#).

Here you see how black text with a 4 pixel rgb(225, 198, 199) colored shadow looks like.

```
.shadow{ text-shadow: 4px 4px 2px rgb(225, 198, 199) }
```

Border

The CSS property to change the border of an element to YIQ 206.1870, 15.7710, 6.0350 is called "border". The border property can be set on classes, ids or directly on the HTML element.

This example shows the color as border, it can be applied via the CSS property "border" or "border-color".

```
.border, #border, table{ border:4px solid rgb(225, 198, 199) }
```


If only the border color should be changed use the property `border-color`.

```
.border{ border-color:rgb(225, 198, 199) }
```

If you want to add a box shadow in that color use:

Here you see how a box with a 4 pixel `rgb(225, 198, 199)` colored shadow looks like.

```
.boxshadow{ -moz-box-shadow:4px 4px 4px 4px rgb(225, 198, 199); -webkit-box-shadow:4px 4px 4px 4px rgb(225, 198, 199); box-shadow:4px 4px 4px 4px rgb(225, 198, 199) }
```

Background

The CSS property to change the background color of an element to YIQ 206.1870, 15.7710, 6.0350 is called "background". The background property can be set on classes, ids or directly on the HTML element.

```
.background, #background, body{  
background: rgb(225, 198, 199) }
```

If only the background color should be changed can be used:

```
.background{ background-color: rgb(225,  
198, 199) }
```

This example shows the color as background, it is applied via the CSS property "background".

To optimize and compress your CSS code, you can use our [online CSS compressor and optimizer](#) based on csstidy. If you want to create a linear or radial gradient as background or border, check our [CSS Gradient Generator](#).

Hey! You found this booklet interesting? Support Converting Colors with the new Membership Option!

The pro membership hides all ads, plus gives you double the colors in the color bucket, and more awesome pro features!

[Learn more, Memberships starting at \\$2.50/m!](#)

**Follow me
on Twitter!**

@ConvertingColor