

Converting Colors

YIQ(206.3050, 9.6270, 7.2510)

Have a look what the booklet for
YIQ(206.3050, 9.6270, 7.2510)
contains.

YIQ(206.3050, 9.6270, 7.2510)	3
<i>Conversions</i>	4
<i>Details</i>	6
<i>Harmonies</i>	12
<i>Previews</i>	24
<i>Color Blindness Simulation</i>	28
<i>CSS Examples</i>	31

Color

**YIQ(206.3050, 9.6270,
7.2510)**

Conversions

Conversions Part 1

Format	Color
Hex	DCC7D0
RGB	220, 199, 208
RGB Percent	86%, 78%, 82%
CMY	0.1372, 0.2196, 0.1843
CMYK	0.00, 0.10, 0.05, 0.14
HSL	334°, 23%, 82%
HSV	334°, 10%, 86%
XYZ	61.3270, 60.6151, 68.1473
YIQ	206.3050, 9.6270, 7.2510

Conversions

Conversions Part 2

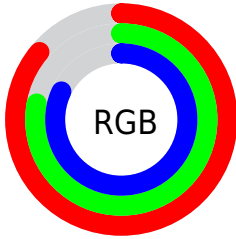
Format	Color
R _Y B	220, 199, 208
Decimal	14469072
CIE Lab	82.17, 8.90, -1.82
CIE LCh	82, 9.088, 348.471
Yxy	60.6151, 0.3226, 0.3189
Android (android.graphics.Color)	4292659152 (0xFFDCC7D0)
YUV	206.3050, 0.8356, 12.0105
Hunter-Lab	77.8557, 4.3572, 2.6023

Details

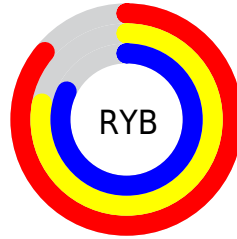
The YIQ color $206.3050, 9.6270, 7.2510$ is a light color, and the websafe version is hex `CCCCCC`. A complement of this color would be $212.6950, -9.6270, -7.2510$, and the grayscale version is $206.0000, -0.0000, 0.0000$.

A 20% lighter version of the original color is $255.0000, -0.0000, -0.0000$, and $152.0060, 9.0310, 7.0390$ is the 20% darker color. If you saturate the color by 10%, you get $191.9090, 19.8500, 14.7140$, and if you desaturate by 10%, it is $220.7010, -0.5960, -0.2120$.

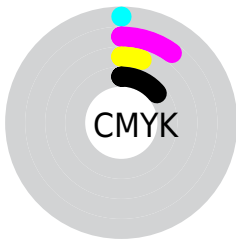
Distribution



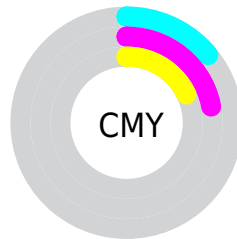
- Red (86%)
- Green (78%)
- Blue (82%)



- Red (86%)
- Yellow (78%)
- Blue (82%)



- Cyan (0%)
- Magenta (10%)
- Yellow (5%)
- Black (14%)



- Cyan (14%)
- Magenta (22%)
- Yellow (18%)

Brightness & Saturation Gradients

These gradients show how the YIQ color 206.3050, 9.6270, 7.2510 changes by changing the brightness by 10 percent. The first figure shows a shift by +10% for each color and the second figure -10%.

Similar to the brightness gradients but the following saturation gradients show a change of the YIQ color 206.3050, 9.6270, 7.2510 by changing the saturation by 10% instead.

■ 206.3050, 9.6270,
7.2510

■ 206.3050, 9.6270,
7.2510

255.0000, -0.0000,
-0.0000

■ 178.8920, 9.3520,
6.7280

■ 152.0060, 9.0310,
7.0390

■ 126.0060, 9.0310,
7.0390

■ 101.2940, 8.1600,
6.3040

■ 76.9950, 7.5640,
6.0920

■ 54.5820, 7.2890,
5.5690

■ 32.6960, 6.9680,

5.8800

■ 8.9460, 9.2600,
8.3960

■ 0.0000, 0.0000,
0.0000

■ 206.3050, 9.6270,
7.2510

■ 206.3050, 9.6270,
7.2510

■ 191.9090, 19.8500,
14.7140

■ 220.7010, -0.5960,
-0.2120

■ 177.6270, 29.7520,
22.4880

■ 234.9830,
-10.4980, -7.9860

■ 163.2310, 39.9750,
29.9510

■ 243.5090,
-17.9710, -10.2190

■ 148.9490, 49.8770,
37.7250

■ 244.5350,
-20.8600, -7.4200

■ 134.5530, 60.1000,
45.1880

■ 120.2710, 70.0020,
52.9620

■ 105.8750, 80.2250,
60.4250

■ 91.4790, 90.4480,
67.8880

■ 77.1970, 100.3500,
75.6620

Harmonies

Analogous

The Analogous color harmony consists of three colors that are next to each other on the color wheel.



205.9990, 1.7410, 6.9970



206.3050, 9.6270, 7.2510



206.1760, 14.3040, 5.0880

Triad

The Triadic color harmony groups three colors that are evenly spaced from another and form a triangle on the color wheel.



206.3050, 9.6270, 7.2510



203.3610, 6.0530, -5.0750



202.1490, -16.5970, -2.0770

Complementary

The Complementary color scheme is a pair of colors which are on the opposite of each other on the color wheel.



206.3050, 9.6270, 7.2510



212.6950, -9.6270, -7.2510

Split Complementary

Split-complementary colors differ from the complementary color scheme. The scheme consists of three colors, the original color and two neighbors of the complement color.



202.1120, -15.1750, -5.8230



206.3050, 9.6270, 7.2510



202.7020, -2.3370, -7.2090

Square

The Square scheme is like the rectangle color scheme, but the four colors are evenly spaced on the color wheel.



206.3050, 9.6270, 7.2510



204.8780, 11.9670, -2.1210



201.8090, -9.9480, -6.9400



203.5240, -13.1590, 1.6970

Rectangle

The Rectangle color scheme consists of four colors that form a rectangle on the color wheel.



206.3050, 9.6270, 7.2510



205.8940, 15.0380, 2.7980



201.8090, -9.9480, -6.9400



202.2090, -16.8260, -3.4340

Sweetspot

The Sweet Spot groups the original color and five complimentary colors.



206.3050, 9.6270, 7.2510



249.8480, 3.4840, 2.9400



204.9820, 0.4110, 9.0750



124.1360, 2.6130, 2.2050



0.0000, 0.0000, 0.0000



128.0000, -0.0000, -0.0000

Same Dimension

The Same Dimension uses a secret algorithm to generate beautiful new colors.



206.3050, 9.6270, 7.2510



236.7400, 12.8360, 9.6680



205.8660, 12.2410, 3.9290



102.7450, 5.2720, 3.5760



60.1630, 79.3540, 59.6900



16.0340, 20.9960, 15.9720

Inverse Universe

The Inverse Universe completely reimagines the original color for something new.



206.3050, 9.6270, 7.2510



236.7400, 12.8360, 9.6680



213.1340, -12.2410, -3.9290



102.7450, 5.2720, 3.5760



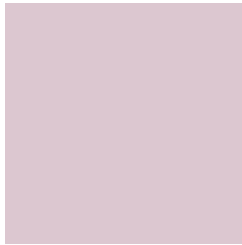
60.1630, 79.3540, 59.6900



16.0340, 20.9960, 15.9720

Previews

White Background



This preview shows how the YIQ color 206.3050, 9.6270, 7.2510 looks on a white background.

Color Contrast Check

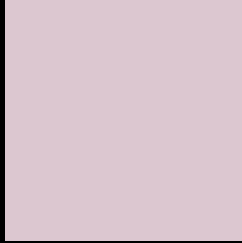
Large Text (above 18pt) WCAG AA × Fail

Any Text WCAG AA × Fail

Large Text (above 18pt) WCAG AAA × Fail

Any Text WCAG AAA × Fail

Black Background



This preview shows how the YIQ color 206.3050, 9.6270, 7.2510 looks on a black background.

Color Contrast Check

Large Text (above 18pt) WCAG AA ✓ Pass

Any Text WCAG AA ✓ Pass

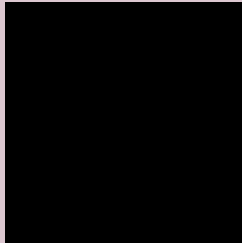
Large Text (above 18pt) WCAG AAA ✓ Pass

Any Text WCAG AAA ✓ Pass

If you want to check with other color combinations, try the [Color Contrast Checker](#).

YIQ 206.3050, 9.6270, 7.2510

Background



This preview shows how black text looks on a background with the YIQ color 206.3050, 9.6270, 7.2510.



This preview shows how white text looks on a background with the YIQ color 206.3050, 9.6270,

Color Blindness Simulation

Color vision deficiency is a very complex topic, and I could not describe the different causes any better than Wikipedia does, so if you want to learn more, you should check out their [article about color blindness](#).

Dichromacy



Original Color

206.3050, 9.6270, 7.2510

Protanopia

204.8090, -0.7800, 3.1240

Deuteranopia

206.3160, 11.0940, 8.1980



Tritanopia

206.7010, 8.5720, 9.8520

Trichromacy



Original Color

206.3050, 9.6270, 7.2510

Protanomaly

205.6030, 2.7960, 4.3960

Deuteranomaly

206.0170, 10.4980, 7.9860

Tritanomaly

206.4730, 9.2140, 9.2300

Monochromacy



Original Color

206.3050, 9.6270, 7.2510

Achromatopsia

206.0000, -0.0000, 0.0000

Achromatomaly

205.8480, 3.4840, 2.9400

CSS Examples

Text

The CSS property to change the color of the text to YIQ 206.3050, 9.6270, 7.2510 is called "color". The color property can be set on classes, ids or directly on the HTML element.

This example shows how text in the color `rgb(220, 199, 208)` looks like.

```
.text, #text, p{  
    color:rgb(220, 199, 208)  
}
```

If you want to add a text shadow in that color use the text-shadow property, you can generate a text shadow directly with our [CSS Text Shadow Generator](#).

Here you see how black text with a 4 pixel rgb(220, 199, 208) colored shadow looks like.

```
.shadow{ text-shadow: 4px 4px 2px rgb(220, 199, 208) }
```

Border

The CSS property to change the border of an element to YIQ 206.3050, 9.6270, 7.2510 is called "border". The border property can be set on classes, ids or directly on the HTML element.

This example shows the color as border, it can be applied via the CSS property "border" or "border-color".

```
.border, #border, table{ border:4px solid rgb(220, 199, 208) }
```


If only the border color should be changed use the property `border-color`.

```
.border{ border-color:rgb(220, 199, 208) }
```

If you want to add a box shadow in that color use:

Here you see how a box with a 4 pixel `rgb(220, 199, 208)` colored shadow looks like.

```
.boxshadow{ -moz-box-shadow:4px 4px 4px  
4px rgb(220, 199, 208); -webkit-box-  
shadow:4px 4px 4px 4px rgb(220, 199, 208);  
box-shadow:4px 4px 4px 4px rgb(220, 199,  
208) }
```

Background

The CSS property to change the background color of an element to YIQ 206.3050, 9.6270, 7.2510 is called "background". The background property can be set on classes, ids or directly on the HTML element.

```
.background, #background, body{  
background: rgb(220, 199, 208) }
```

If only the background color should be changed can be used:

```
.background{ background-color: rgb(220,  
199, 208) }
```

This example shows the color as background, it is applied via the CSS property "background".

To optimize and compress your CSS code, you can use our [online CSS compressor and optimizer](#) based on csstidy. If you want to create a linear or radial gradient as background or border, check our [CSS Gradient Generator](#).

Hey! You found this booklet interesting? Support Converting Colors with the new Membership Option!

The pro membership hides all ads, plus gives you double the colors in the color bucket, and more awesome pro features!

[Learn more, Memberships starting at \\$2.50/m!](#)

**Follow me
on Twitter!**

@ConvertingColor