

Converting Colors

YIQ(206.6200, 30.4890, 3.6170)

Have a look what the booklet for
YIQ(206.6200, 30.4890, 3.6170)
contains.

YIQ(206.6200, 30.4890, 3.6170)	3
<i>Conversions</i>	4
<i>Details</i>	6
<i>Harmonies</i>	12
<i>Previews</i>	24
<i>Color Blindness Simulation</i>	28
<i>CSS Examples</i>	31

Color

**YIQ(206.6200, 30.4890,
3.6170)**

Conversions

Conversions Part 1

Format	Color
Hex	EEC4B3
RGB	238, 196, 179
RGB Percent	93%, 77%, 70%
CMY	0.0666, 0.2314, 0.2979
CMYK	0.00, 0.18, 0.25, 0.07
HSL	17°, 63%, 82%
HSV	17°, 25%, 93%
XYZ	63.1436, 60.9090, 51.0946
YIQ	206.6200, 30.4890, 3.6170

Conversions

Conversions Part 2

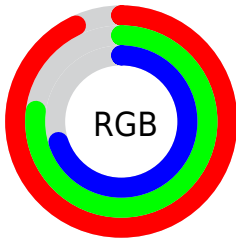
Format	Color
R _Y B	238, 203, 179
Decimal	15647923
CIE Lab	82.33, 12.45, 14.12
CIE LCh	82, 18.820, 48.597
Yxy	60.9090, 0.3605, 0.3478
Android (android.graphics.Color)	4293838003 (0xFFEEC4B3)
YUV	206.6200, -13.6167, 27.5203
Hunter-Lab	78.0442, 7.8425, 15.8146

Details

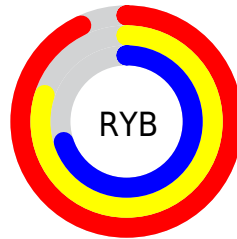
The YIQ color $206.6200, 30.4890, 3.6170$ is a light color, and the websafe version is hex FFCCCC . A complement of this color would be $210.3800, -30.4890, -3.6170$, and the grayscale version is $207.0000, 0.0000, -0.0000$.

A 20% lighter version of the original color is $251.5460, 6.9700, -5.1740$, and $151.8370, 28.3800, 3.2920$ is the 20% darker color. If you saturate the color by 10%, you get $193.9050, 42.8680, 5.0440$, and if you desaturate by 10%, it is $219.3350, 18.1100, 2.1900$.

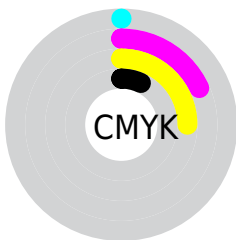
Distribution



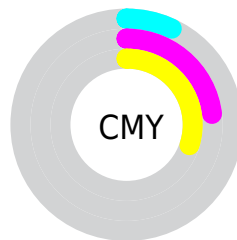
- Red (93%)
- Green (77%)
- Blue (70%)



- Red (93%)
- Yellow (80%)
- Blue (70%)



- Cyan (0%)
- Magenta (18%)
- Yellow (25%)
- Black (7%)





- Cyan (7%)
- Magenta (23%)
- Yellow (30%)

Brightness & Saturation Gradients


These gradients show how the YIQ color 206.6200, 30.4890, 3.6170 changes by changing the brightness by 10 percent. The first figure shows a shift by +10% for each color and the second figure -10%.

Similar to the brightness gradients but the following saturation gradients show a change of the YIQ color 206.6200, 30.4890, 3.6170 by changing the saturation by 10% instead.


 206.6200, 30.4890,
3.6170


 206.6200, 30.4890,
3.6170


255.0000, -0.0000,
-0.0000


 179.0220, 29.2970,
3.1930


 251.5460, 6.9700,
-5.1740

 151.8370, 28.3800,
3.2920

 126.2390, 27.1880,
2.8680

 100.7550, 25.6750,
2.7550

 76.2710, 24.1620,
2.6420

 53.4880, 22.0530,
2.3170

 31.7760, 21.1820,

1.5820

■ 9.2690, 18.4760,
6.5720

■ 0.0000, 0.0000,
0.0000

■ 206.6200, 30.4890,
3.6170

■ 206.6200, 30.4890,
3.6170

■ 193.9050, 42.8680,
5.0440

■ 219.3350, 18.1100,
2.1900

■ 181.1900, 55.2470,
6.4710

■ 232.0500, 5.7310,
0.7630

■ 168.5890, 67.3050,
8.2090

■ 244.6510, -6.3270,
-0.9750

■ 155.8740, 79.6840,
9.6360

■ 249.9170,
-10.1320, -3.6040

■ 143.1590, 92.0630,
11.0630

■ 130.4440,
104.4420, 12.4900

■ 117.7290,
116.8210, 13.9170

■ 111.0780,
123.1480, 14.8920

Harmonies

Analogous

The Analogous color harmony consists of three colors that are next to each other on the color wheel.



207.7650, 28.8830, 10.6990



206.6200, 30.4890, 3.6170



204.7560, 23.9340, -4.2420

Triad

The Triadic color harmony groups three colors that are evenly spaced from another and form a triangle on the color wheel.



206.6200, 30.4890, 3.6170



199.1940, -21.6380, -15.3500



205.7940, -13.6190, 10.0370

Complementary

The Complementary color scheme is a pair of colors which are on the opposite of each other on the color wheel.



206.6200, 30.4890, 3.6170



210.3800, -30.4890, -3.6170

Split Complementary

Split-complementary colors differ from the complementary color scheme. The scheme consists of three colors, the original color and two neighbors of the complement color.



202.2650, -28.4270, 3.0690



206.6200, 30.4890, 3.6170



198.2560, -33.3760, -11.8720

Square

The Square scheme is like the rectangle color scheme, but the four colors are evenly spaced on the color wheel.



206.6200, 30.4890, 3.6170



200.9910, -4.9490, -14.9410



199.8030, -36.1740, -5.2140



207.7100, 4.3530, 14.7290

Rectangle

The Rectangle color scheme consists of four colors that form a rectangle on the color wheel.



206.6200, 30.4890, 3.6170



203.7010, 16.5990, -8.9770



199.8030, -36.1740, -5.2140



204.9890, -18.6620, 7.8180

Sweetspot

The Sweet Spot groups the original color and five complimentary colors.



206.6200, 30.4890, 3.6170



245.3170, 9.3530, 1.2010



201.4290, 21.6820, 25.5700



122.0500, 5.7310, 0.7630



0.0000, 0.0000, 0.0000



128.0000, -0.0000, -0.0000

Same Dimension

The Same Dimension uses a secret algorithm to generate beautiful new colors.



206.6200, 30.4890, 3.6170



214.0510, 39.5210, 5.1290



223.6430, 22.5140, -11.5500



113.3490, 6.3270, 0.9750



86.1270, 95.0890, 11.2890



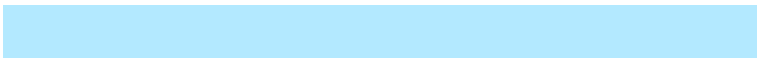
26.1360, 28.9760, 3.5040

Inverse Universe

The Inverse Universe completely reimagines the original color for something new.



210.3800, -30.4890, -3.6170



219.3620, -39.2460, -4.6060



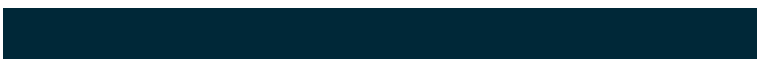
193.3570, -22.5140, 11.5500



114.0640, -6.0520, -0.4520



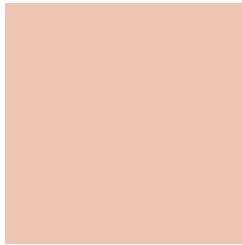
97.8730, -95.0890, -11.2890



29.8640, -28.9760, -3.5040

Previews

White Background



This preview shows how the YIQ color 206.6200, 30.4890, 3.6170 looks on a white background.

Color Contrast Check

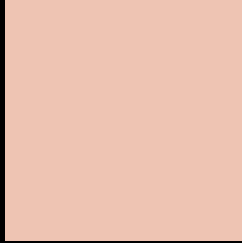
Large Text (above 18pt) WCAG AA × Fail

Any Text WCAG AA × Fail

Large Text (above 18pt) WCAG AAA × Fail

Any Text WCAG AAA × Fail

Black Background



This preview shows how the YIQ color 206.6200, 30.4890, 3.6170 looks on a black background.

Color Contrast Check

Large Text (above 18pt) WCAG AA ✓ Pass

Any Text WCAG AA ✓ Pass

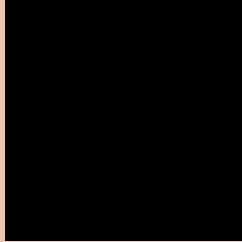
Large Text (above 18pt) WCAG AAA ✓ Pass

Any Text WCAG AAA ✓ Pass

If you want to check with other color combinations, try the [Color Contrast Checker](#).

YIQ 206.6200, 30.4890, 3.6170

Background



This preview shows how black text looks on a background with the YIQ color 206.6200, 30.4890, 3.6170.



This preview shows how white text looks on a background with the YIQ color 206.6200, 30.4890,

3.6170.

Color Blindness Simulation

Color vision deficiency is a very complex topic, and I could not describe the different causes any better than Wikipedia does, so if you want to learn more, you should check out their [article about color blindness](#).

Dichromacy



Original Color

206.6200, 30.4890, 3.6170

Protanopia

204.5960, 12.7010, -4.4110

Deuteranopia

206.0110, 27.8300, 2.2460



Tritanopia

208.3610, 24.3890, 15.0530

Trichromacy



Original Color

206.6200, 30.4890, 3.6170

Protanomaly

205.4120, 19.2110, -1.2450

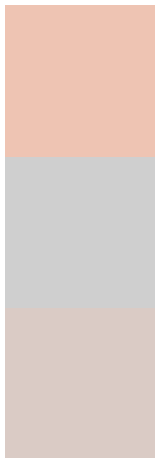
Deuteranomaly

206.3100, 28.4260, 2.4580

Tritanomaly

207.5090, 26.7280, 11.2080

Monochromacy



Original Color

206.6200, 30.4890, 3.6170

Achromatopsia

207.0000, 0.0000, -0.0000

Achromatomaly

206.8010, 10.8660, 1.3140

CSS Examples

Text

The CSS property to change the color of the text to YIQ 206.6200, 30.4890, 3.6170 is called "color". The color property can be set on classes, ids or directly on the HTML element.

This example shows how text in the color `rgb(238, 196, 179)` looks like.

```
.text, #text, p{  
    color:rgb(238, 196, 179)  
}
```

If you want to add a text shadow in that color use the text-shadow property, you can generate a text shadow directly with our [CSS Text Shadow Generator](#).

Here you see how black text with a 4 pixel rgb(238, 196, 179) colored shadow looks like.

```
.shadow{ text-shadow: 4px 4px 2px rgb(238, 196, 179) }
```

Border

The CSS property to change the border of an element to YIQ 206.6200, 30.4890, 3.6170 is called "border". The border property can be set on classes, ids or directly on the HTML element.

This example shows the color as border, it can be applied via the CSS property "border" or "border-color".

```
.border, #border, table{ border:4px solid rgb(238, 196, 179) }
```


If only the border color should be changed use the property `border-color`.

```
.border{ border-color:rgb(238, 196, 179) }
```

If you want to add a box shadow in that color use:

Here you see how a box with a 4 pixel `rgb(238, 196, 179)` colored shadow looks like.

```
.boxshadow{ -moz-box-shadow:4px 4px 4px  
4px rgb(238, 196, 179); -webkit-box-  
shadow:4px 4px 4px 4px rgb(238, 196, 179);  
box-shadow:4px 4px 4px 4px rgb(238, 196,  
179) }
```

Background

The CSS property to change the background color of an element to YIQ 206.6200, 30.4890, 3.6170 is called "background". The background property can be set on classes, ids or directly on the HTML element.

```
.background, #background, body{  
background: rgb(238, 196, 179) }
```

If only the background color should be changed can be used:

```
.background{ background-color: rgb(238,  
196, 179) }
```

This example shows the color as background, it is applied via the CSS property "background".

To optimize and compress your CSS code, you can use our [online CSS compressor and optimizer](#) based on csstidy. If you want to create a linear or radial gradient as background or border, check our [CSS Gradient Generator](#).

Hey! You found this booklet interesting? Support Converting Colors with the new Membership Option!

The pro membership hides all ads, plus gives you double the colors in the color bucket, and more awesome pro features!

[Learn more, Memberships starting at \\$2.50/m!](#)

**Follow me
on Twitter!**

@ConvertingColor