

Converting Colors

YIQ(207.0620, 14.6250, 4.7770)

Have a look what the booklet for
YIQ(207.0620, 14.6250, 4.7770)
contains.

YIQ(207.0620, 14.6250, 4.7770)	3
<i>Conversions</i>	4
<i>Details</i>	6
<i>Harmonies</i>	12
<i>Previews</i>	24
<i>Color Blindness Simulation</i>	28
<i>CSS Examples</i>	31

Color

**YIQ(207.0620, 14.6250,
4.7770)**

Conversions

Conversions Part 1

Format	Color
Hex	E0C8C7
RGB	224, 200, 199
RGB Percent	88%, 78%, 78%
CMY	0.1215, 0.2157, 0.2195
CMYK	0.00, 0.11, 0.11, 0.12
HSL	2°, 29%, 83%
HSV	2°, 11%, 88%
XYZ	61.7074, 61.2777, 62.6174
YIQ	207.0620, 14.6250, 4.7770

Conversions

Conversions Part 2

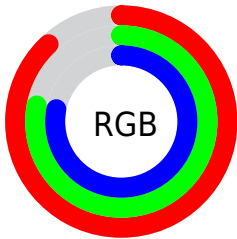
Format	Color
R _Y B	224, 200, 199
Decimal	14731463
CIE Lab	82.53, 8.26, 3.56
CIE LCh	83, 8.993, 23.296
Yxy	61.2777, 0.3325, 0.3302
Android (android.graphics.Color)	4292921543 (0xFFE0C8C7)
YUV	207.0620, -3.9746, 14.8546
Hunter-Lab	78.2801, 3.7197, 7.3691

Details

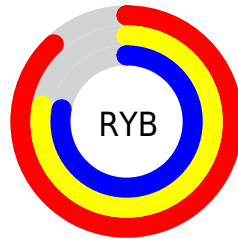
The YIQ color $207.0620, 14.6250, 4.7770$ is a light color, and the websafe version is hex `CCCCCC`. A complement of this color would be $215.9380, -14.6250, -4.7770$, and the grayscale version is $207.0000, 0.0000, -0.0000$.

A 20% lighter version of the original color is $255.0000, -0.0000, -0.0000$, and $152.7630, 14.0290, 4.5650$ is the 20% darker color. If you saturate the color by 10%, you get $191.6400, 27.7370, 9.4410$, and if you desaturate by 10%, it is $222.4840, 1.5130, 0.1130$.

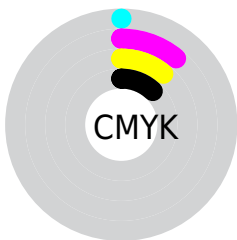
Distribution



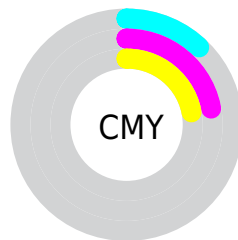
- Red (88%)
- Green (78%)
- Blue (78%)



- Red (88%)
- Yellow (78%)
- Blue (78%)



- Cyan (0%)
- Magenta (11%)
- Yellow (11%)
- Black (12%)



- Cyan (12%)
- Magenta (22%)
- Yellow (22%)

Brightness & Saturation Gradients

These gradients show how the YIQ color 207.0620, 14.6250, 4.7770 changes by changing the brightness by 10 percent. The first figure shows a shift by +10% for each color and the second figure -10%.

Similar to the brightness gradients but the following saturation gradients show a change of the YIQ color 207.0620, 14.6250, 4.7770 by changing the saturation by 10% instead.

■ 207.0620, 14.6250,
4.7770

■ 207.0620, 14.6250,
4.7770

255.0000, -0.0000,
-0.0000

■ 179.7630, 14.0290,
4.5650

■ 152.7630, 14.0290,
4.5650

■ 126.5780, 13.1120,
4.6640

■ 101.8660, 12.2410,
3.9290

■ 77.8660, 12.2410,
3.9290

■ 54.6810, 11.3240,
4.0280

■ 33.0830, 10.1320,

3.6040

■ 9.0620, 14.6250,
4.7770

■ 0.0000, 0.0000,
0.0000

■ 207.0620, 14.6250,
4.7770

■ 207.0620, 14.6250,
4.7770

■ 191.6400, 27.7370,
9.4410

■ 222.4840, 1.5130,
0.1130

■ 176.6910, 40.8950,
13.2710

■ 237.4330,
-11.6450, -3.7170

■ 161.2690, 54.0070,
17.9350

■ 245.7310,
-18.4760, -6.5720

■ 146.3200, 67.1650,
21.7650

■ 130.8980, 80.2770,
26.4290

■ 116.0630, 93.1140,
30.5700

■ 100.5270,
106.5470, 34.9230

■ 85.6920, 119.3840,
39.0640

■ 72.2590, 131.0290,
42.7810

Harmonies

Analogous

The Analogous color harmony consists of three colors that are next to each other on the color wheel.



207.4900, 10.5440, 7.1520



207.0620, 14.6250, 4.7770



206.5410, 14.5340, 0.9180

Triad

The Triadic color harmony groups three colors that are evenly spaced from another and form a triangle on the color wheel.



207.0620, 14.6250, 4.7770



203.2180, -3.8500, -7.3220



205.1220, -11.9670, 2.1210

Complementary

The Complementary color scheme is a pair of colors which are on the opposite of each other on the color wheel.



207.0620, 14.6250, 4.7770



215.9380, -14.6250, -4.7770

Split Complementary

Split-complementary colors differ from the complementary color scheme. The scheme consists of three colors, the original color and two neighbors of the complement color.



203.5620, -16.3220, -1.5540



207.0620, 14.6250, 4.7770



202.6240, -10.8650, -6.8410

Square

The Square scheme is like the rectangle color scheme, but the four colors are evenly spaced on the color wheel.



207.0620, 14.6250, 4.7770



204.4640, 4.2650, -5.7110



202.7530, -15.5420, -4.6780



206.2370, -4.8610, 5.4990

Rectangle

The Rectangle color scheme consists of four colors that form a rectangle on the color wheel.



207.0620, 14.6250, 4.7770



205.5900, 12.8380, -1.3860



202.7530, -15.5420, -4.6780



204.6980, -13.7090, 0.6510

Sweetspot

The Sweet Spot groups the original color and five complimentary colors.



207.0620, 14.6250, 4.7770



249.9790, 4.4930, 1.1730



209.2110, 7.1960, 12.7640



124.3810, 3.3010, 0.7490



0.0000, 0.0000, 0.0000



128.0000, -0.0000, -0.0000

Same Dimension

The Same Dimension uses a secret algorithm to generate beautiful new colors.



207.0620, 14.6250, 4.7770



232.4540, 19.3930, 6.4730



214.1060, 11.3250, -1.4990



104.2890, 6.5560, 2.3320



56.7330, 102.9710, 33.6510



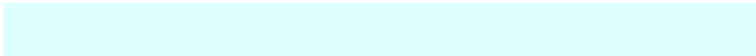
15.5260, 28.0580, 9.1300

Inverse Universe

The Inverse Universe completely reimagines the original color for something new.



215.9380, -14.6250, -4.7770



244.5460, -19.3930, -6.4730



208.8940, -11.3250, 1.4990



108.7110, -6.5560, -2.3320



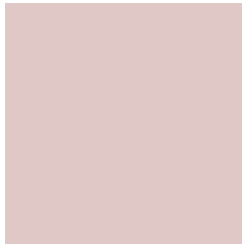
119.2670, -102.9710, -33.6510



33.0610, -28.3330, -9.6530

Previews

White Background



This preview shows how the YIQ color 207.0620, 14.6250, 4.7770 looks on a white background.

Color Contrast Check

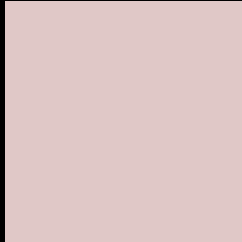
Large Text (above 18pt) WCAG AA × Fail

Any Text WCAG AA × Fail

Large Text (above 18pt) WCAG AAA × Fail

Any Text WCAG AAA × Fail

Black Background



This preview shows how the YIQ color 207.0620, 14.6250, 4.7770 looks on a black background.

Color Contrast Check

Large Text (above 18pt) WCAG AA ✓ Pass

Any Text WCAG AA ✓ Pass

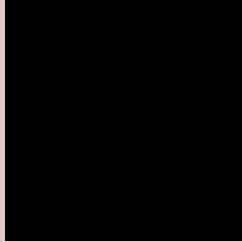
Large Text (above 18pt) WCAG AAA ✓ Pass

Any Text WCAG AAA ✓ Pass

If you want to check with other color combinations, try the [Color Contrast Checker](#).

YIQ 207.0620, 14.6250, 4.7770

Background



This preview shows how black text looks on a background with the YIQ color 207.0620, 14.6250, 4.7770.



This preview shows how white text looks on a background with the YIQ color 207.0620, 14.6250,

4.7770.

Color Blindness Simulation

Color vision deficiency is a very complex topic, and I could not describe the different causes any better than Wikipedia does, so if you want to learn more, you should check out their [article about color blindness](#).

Dichromacy



Original Color

207.0620, 14.6250, 4.7770

Protanopia

206.1530, 3.9430, 0.1270

Deuteranopia

207.6710, 17.2840, 6.1480



Tritanopia

208.0820, 11.8730, 10.6010

Trichromacy



Original Color

207.0620, 14.6250, 4.7770

Protanomaly

206.3600, 7.7940, 1.9220

Deuteranomaly

207.3720, 16.6880, 5.9360

Tritanomaly

207.8000, 12.6070, 8.3110

Monochromacy



Original Color

207.0620, 14.6250, 4.7770

Achromatopsia

207.0000, 0.0000, -0.0000

Achromatomaly

206.6910, 5.3640, 1.9080

CSS Examples

Text

The CSS property to change the color of the text to YIQ 207.0620, 14.6250, 4.7770 is called "color". The color property can be set on classes, ids or directly on the HTML element.

This example shows how text in the color `rgb(224, 200, 199)` looks like.

```
.text, #text, p{  
    color:rgb(224, 200, 199)  
}
```

If you want to add a text shadow in that color use the text-shadow property, you can generate a text shadow directly with our [CSS Text Shadow Generator](#).

Here you see how black text with a 4 pixel rgb(224, 200, 199) colored shadow looks like.

```
.shadow{ text-shadow: 4px 4px 2px rgb(224, 200, 199) }
```

Border

The CSS property to change the border of an element to YIQ 207.0620, 14.6250, 4.7770 is called "border". The border property can be set on classes, ids or directly on the HTML element.

This example shows the color as border, it can be applied via the CSS property "border" or "border-color".

```
.border, #border, table{ border:4px solid rgb(224, 200, 199) }
```


If only the border color should be changed use the property `border-color`.

```
.border{ border-color:rgb(224, 200, 199) }
```

If you want to add a box shadow in that color use:

Here you see how a box with a 4 pixel `rgb(224, 200, 199)` colored shadow looks like.

```
.boxshadow{ -moz-box-shadow:4px 4px 4px  
4px rgb(224, 200, 199); -webkit-box-  
shadow:4px 4px 4px 4px rgb(224, 200, 199);  
box-shadow:4px 4px 4px 4px rgb(224, 200,  
199) }
```

Background

The CSS property to change the background color of an element to YIQ 207.0620, 14.6250, 4.7770 is called "background". The background property can be set on classes, ids or directly on the HTML element.

```
.background, #background, body{  
background: rgb(224, 200, 199) }
```

If only the background color should be changed can be used:

```
.background{ background-color: rgb(224,  
200, 199) }
```

This example shows the color as background, it is applied via the CSS property "background".

To optimize and compress your CSS code, you can use our [online CSS compressor and optimizer](#) based on csstidy. If you want to create a linear or radial gradient as background or border, check our [CSS Gradient Generator](#).

Hey! You found this booklet interesting? Support Converting Colors with the new Membership Option!

The pro membership hides all ads, plus gives you double the colors in the color bucket, and more awesome pro features!

[Learn more, Memberships starting at \\$2.50/m!](#)

**Follow me
on Twitter!**

@ConvertingColor