

Converting Colors

YIQ(207.3910, 23.7040, -0.0720)

Have a look what the booklet for
YIQ(207.3910, 23.7040, -0.0720)
contains.

YIQ(207.3910, 23.7040, -0.0720)	3
<i>Conversions</i>	4
<i>Details</i>	6
<i>Harmonies</i>	12
<i>Previews</i>	24
<i>Color Blindness Simulation</i>	28
<i>CSS Examples</i>	31

Color

**YIQ(207.3910, 23.7040,
-0.0720)**

Conversions

Conversions Part 1

Format	Color
Hex	E6C9B5
RGB	230, 201, 181
RGB Percent	90%, 79%, 71%
CMY	0.0980, 0.2118, 0.2901
CMYK	0.00, 0.13, 0.21, 0.10
HSL	24°, 50%, 81%
HSV	24°, 21%, 90%
XYZ	61.8649, 61.9303, 52.4242
YIQ	207.3910, 23.7040, -0.0720

Conversions

Conversions Part 2

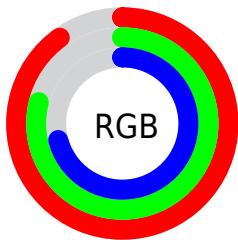
Format	Color
R _Y B	230, 215, 181
Decimal	15124917
CIE Lab	82.88, 7.13, 13.72
CIE LCh	83, 15.462, 62.558
Yxy	61.9303, 0.3511, 0.3514
Android (android.graphics.Color)	4293314997 (0xFFE6C9B5)
YUV	207.3910, -13.0108, 19.8281
Hunter-Lab	78.6958, 2.6060, 15.5903

Details

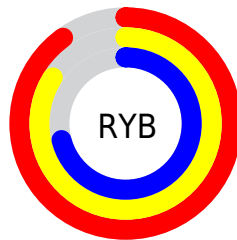
The YIQ color $207.3910, 23.7040, -0.0720$ is a light color, and the websafe version is hex `FFCCCC`. A complement of this color would be $203.6090, -23.7040, 0.0720$, and the grayscale version is $208.0000, -0.0000, -0.0000$.

A 20% lighter version of the original color is $252.9480, 5.7780, -5.5980$, and $152.9070, 22.1910, -0.1850$ is the 20% darker color. If you saturate the color by 10%, you get $196.5510, 34.9370, 0.0970$, and if you desaturate by 10%, it is $218.2310, 12.4710, -0.2410$.

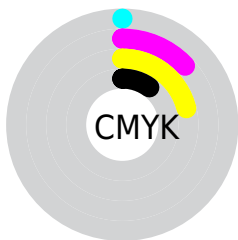
Distribution



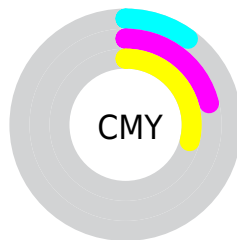
- Red (90%)
- Green (79%)
- Blue (71%)



- Red (90%)
- Yellow (84%)
- Blue (71%)



- Cyan (0%)
- Magenta (13%)
- Yellow (21%)
- Black (10%)





- Cyan (10%)
- Magenta (21%)
- Yellow (29%)

Brightness & Saturation Gradients


These gradients show how the YIQ color 207.3910, 23.7040, -0.0720 changes by changing the brightness by 10 percent. The first figure shows a shift by +10% for each color and the second figure -10%.


Similar to the brightness gradients but the following saturation gradients show a change of the YIQ color 207.3910, 23.7040, -0.0720 by changing the saturation by 10% instead.


 207.3910, 23.7040,
-0.0720


 207.3910, 23.7040,
-0.0720


255.0000, -0.0000,
-0.0000


 180.0920, 23.1080,
-0.2840


 252.9480, 5.7780,
-5.5980

 152.9070, 22.1910,
-0.1850

 126.7220, 21.2740,
-0.0860

 101.5370, 20.3570,
0.0130

 77.9390, 19.1650,
-0.4110

 54.4550, 17.6520,
-0.5240

 32.8570, 16.4600,

-0.9480

■ 10.1220, 14.3960,
3.4200

■ 0.0000, 0.0000,
0.0000

■ 207.3910, 23.7040,
-0.0720

■ 207.3910, 23.7040,
-0.0720

■ 196.5510, 34.9370,
0.0970

■ 218.2310, 12.4710,
-0.2410

■ 186.2980, 45.8950,
-0.2570

■ 228.4840, 1.5130,
0.1130

■ 175.4580, 57.1280,
-0.0880

■ 239.3240, -9.7200,
-0.0560

■ 164.6180, 68.3610,
0.0810

■ 247.5250,
-14.9000, -5.3000

■ 154.3650, 79.3190,
-0.2730

■ 143.5250, 90.5520,
-0.1040

■ 133.2720,
101.5100, -0.4580

■ 123.9480,
111.2300, -0.4020

Harmonies

Analogous

The Analogous color harmony consists of three colors that are next to each other on the color wheel.



208.2760, 25.7660, 6.6140



207.3910, 23.7040, -0.0720



205.9830, 15.8650, -6.6870

Triad

The Triadic color harmony groups three colors that are evenly spaced from another and form a triangle on the color wheel.



207.3910, 23.7040, -0.0720



201.5300, -22.4640, -11.3920



207.9970, -3.9450, 10.9270

Complementary

The Complementary color scheme is a pair of colors which are on the opposite of each other on the color wheel.



207.3910, 23.7040, -0.0720



203.6090, -23.7040, 0.0720

Split Complementary

Split-complementary colors differ from the complementary color scheme. The scheme consists of three colors, the original color and two neighbors of the complement color.



205.7070, -17.9280, 5.5280



207.3910, 23.7040, -0.0720



201.3430, -29.0670, -7.3630

Square

The Square scheme is like the rectangle color scheme, but the four colors are evenly spaced on the color wheel.



207.3910, 23.7040, -0.0720



202.6360, -11.1390, -12.8910



203.2280, -27.0050, -0.6770



209.1790, 10.2220, 12.9900

Rectangle

The Rectangle color scheme consists of four colors that form a rectangle on the color wheel.



207.3910, 23.7040, -0.0720



204.6830, 7.8420, -9.9660



203.2280, -27.0050, -0.6770



207.6050, -8.7130, 9.2310

Sweetspot

The Sweet Spot groups the original color and five complimentary colors.



207.3910, 23.7040, -0.0720



248.0070, 7.2900, 0.0420



198.9570, 19.8950, 19.4070



123.4520, 4.5390, 0.3390



0.0000, 0.0000, 0.0000



128.0000, -0.0000, -0.0000

Same Dimension

The Same Dimension uses a secret algorithm to generate beautiful new colors.



207.3910, 23.7040, -0.0720



224.5830, 31.9110, -0.1290



221.4790, 17.1040, -12.6240



109.5230, 5.7770, -0.0710



96.3720, 86.6090, -0.2310



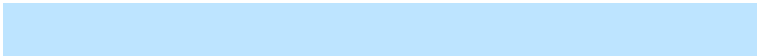
27.5760, 24.6210, -0.1710

Inverse Universe

The Inverse Universe completely reimagines the original color for something new.



203.6090, -23.7040, 0.0720



219.4170, -31.9110, 0.1290



189.5210, -17.1040, 12.6240



108.4770, -5.7770, 0.0710



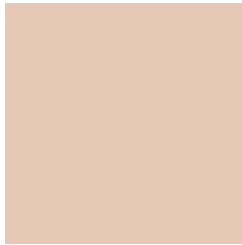
82.6280, -86.6090, 0.2310



23.4240, -24.6210, 0.1710

Previews

White Background



This preview shows how the YIQ color 207.3910, 23.7040, -0.0720 looks on a white background.

Color Contrast Check

Large Text (above 18pt) WCAG AA × Fail

Any Text WCAG AA × Fail

Large Text (above 18pt) WCAG AAA × Fail

Any Text WCAG AAA × Fail

Black Background



This preview shows how the YIQ color 207.3910, 23.7040, -0.0720 looks on a black background.

Color Contrast Check

Large Text (above 18pt) WCAG AA ✓ Pass

Any Text WCAG AA ✓ Pass

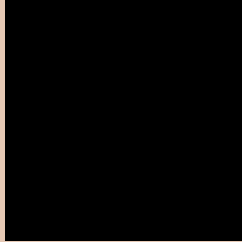
Large Text (above 18pt) WCAG AAA ✓ Pass

Any Text WCAG AAA ✓ Pass

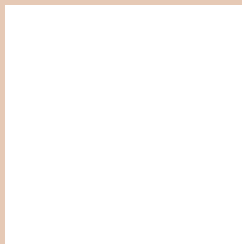
If you want to check with other color combinations, try the [Color Contrast Checker](#).

YIQ 207.3910, 23.7040, -0.0720

Background



This preview shows how black text looks on a background with the YIQ color 207.3910, 23.7040, -0.0720.



This preview shows how white text looks on a background with the YIQ color 207.3910, 23.7040,

-0.0720.

Color Blindness Simulation

Color vision deficiency is a very complex topic, and I could not describe the different causes any better than Wikipedia does, so if you want to learn more, you should check out their [article about color blindness](#).

Dichromacy



Original Color

207.3910, 23.7040, -0.0720

Protanopia

206.4820, 13.0220, -4.7220

Deuteranopia

207.7120, 27.2340, 2.0340



Tritanopia

209.1860, 17.5120, 13.0320

Trichromacy



Original Color

207.3910, 23.7040, -0.0720

Protanomaly

206.6890, 16.8730, -2.9270

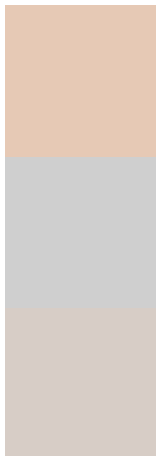
Deuteranomaly

207.7010, 25.7670, 1.0870

Tritanomaly

208.8070, 19.8970, 8.3530

Monochromacy



Original Color

207.3910, 23.7040, -0.0720

Achromatopsia

207.0000, 0.0000, -0.0000

Achromatomaly

207.1920, 8.2070, -0.0570

CSS Examples

Text

The CSS property to change the color of the text to YIQ 207.3910, 23.7040, -0.0720 is called "color". The color property can be set on classes, ids or directly on the HTML element.

This example shows how text in the color `rgb(230, 201, 181)` looks like.

```
.text, #text, p{  
    color:rgb(230, 201, 181)  
}
```

If you want to add a text shadow in that color use the text-shadow property, you can generate a text shadow directly with our [CSS Text Shadow Generator](#).

Here you see how black text with a 4 pixel rgb(230, 201, 181) colored shadow looks like.

```
.shadow{ text-shadow: 4px 4px 2px rgb(230, 201, 181) }
```

Border

The CSS property to change the border of an element to YIQ 207.3910, 23.7040, -0.0720 is called "border". The border property can be set on classes, ids or directly on the HTML element.

This example shows the color as border, it can be applied via the CSS property "border" or "border-color".

```
.border, #border, table{ border:4px solid rgb(230, 201, 181) }
```


If only the border color should be changed use the property `border-color`.

```
.border{ border-color:rgb(230, 201, 181) }
```

If you want to add a box shadow in that color use:

Here you see how a box with a 4 pixel `rgb(230, 201, 181)` colored shadow looks like.

```
.boxshadow{ -moz-box-shadow:4px 4px 4px  
4px rgb(230, 201, 181); -webkit-box-  
shadow:4px 4px 4px 4px rgb(230, 201, 181);  
box-shadow:4px 4px 4px 4px rgb(230, 201,  
181) }
```

Background

The CSS property to change the background color of an element to YIQ 207.3910, 23.7040, -0.0720 is called "background". The background property can be set on classes, ids or directly on the HTML element.

```
.background, #background, body{  
background: rgb(230, 201, 181) }
```

If only the background color should be changed can be used:

```
.background{ background-color: rgb(230,  
201, 181) }
```

This example shows the color as background, it is applied via the CSS property "background".

To optimize and compress your CSS code, you can use our [online CSS compressor and optimizer](#) based on csstidy. If you want to create a linear or radial gradient as background or border, check our [CSS Gradient Generator](#).

Hey! You found this booklet interesting? Support Converting Colors with the new Membership Option!

The pro membership hides all ads, plus gives you double the colors in the color bucket, and more awesome pro features!

[Learn more, Memberships starting at \\$2.50/m!](#)

**Follow me
on Twitter!**

@ConvertingColor