

Converting Colors

YIQ(207.7020, 6.8310, 2.8550)

Have a look what the booklet for
YIQ(207.7020, 6.8310, 2.8550)
contains.

YIQ(207.7020, 6.8310, 2.8550)	3
<i>Conversions</i>	4
<i>Details</i>	6
<i>Harmonies</i>	12
<i>Previews</i>	24
<i>Color Blindness Simulation</i>	28
<i>CSS Examples</i>	31

Color

**YIQ(207.7020, 6.8310,
2.8550)**

Conversions

Conversions Part 1

Format	Color
Hex	D8CCCD
RGB	216, 204, 205
RGB Percent	85%, 80%, 80%
CMY	0.1529, 0.2000, 0.1960
CMYK	0.00, 0.06, 0.05, 0.15
HSL	355°, 13%, 82%
HSV	355°, 6%, 85%
XYZ	60.9330, 62.1915, 66.5545
YIQ	207.7020, 6.8310, 2.8550

Conversions

Conversions Part 2

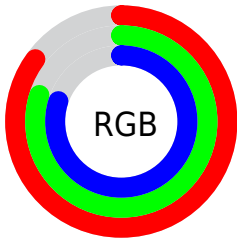
Format	Color
R _Y B	216, 204, 205
Decimal	14208205
CIE Lab	83.02, 4.34, 0.98
CIE LCh	83, 4.450, 12.744
Yxy	62.1915, 0.3212, 0.3279
Android (android.graphics.Color)	4292398285 (0xFFD8CCCD)
YUV	207.7020, -1.3321, 7.2773
Hunter-Lab	78.8616, -0.0884, 5.1659

Details

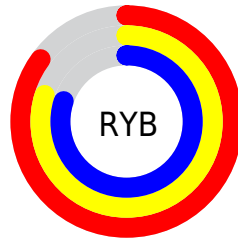
The YIQ color **207.7020, 6.8310, 2.8550** is a light color, and the websafe version is hex **CCCCCC**. A complement of this color would be **212.2980, -6.8310, -2.8550**, and the grayscale version is **208.0000, -0.0000, -0.0000**.

A 20% lighter version of the original color is **255.0000, -0.0000, -0.0000**, and **153.4030, 6.2350, 2.6430** is the 20% darker color. If you saturate the color by 10%, you get **192.5080, 19.3010, 8.1410**, and if you desaturate by 10%, it is **222.8960, -5.6390, -2.4310**.

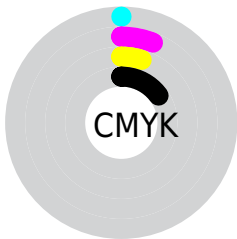
Distribution



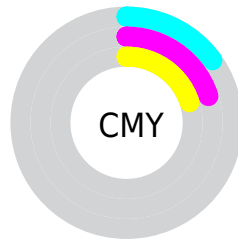
- Red (85%)
- Green (80%)
- Blue (80%)



- Red (85%)
- Yellow (80%)
- Blue (80%)



- Cyan (0%)
- Magenta (6%)
- Yellow (5%)
- Black (15%)



- Cyan (15%)
- Magenta (20%)
- Yellow (20%)

Brightness & Saturation Gradients

These gradients show how the YIQ color 207.7020, 6.8310, 2.8550 changes by changing the brightness by 10 percent. The first figure shows a shift by +10% for each color and the second figure -10%.

Similar to the brightness gradients but the following saturation gradients show a change of the YIQ color 207.7020, 6.8310, 2.8550 by changing the saturation by 10% instead.

■ 207.7020, 6.8310,
2.8550

■ 207.7020, 6.8310,
2.8550

255.0000, -0.0000,
-0.0000

■ 180.4030, 6.2350,
2.6430

■ 153.4030, 6.2350,
2.6430

■ 127.4030, 6.2350,
2.6430

■ 102.4030, 6.2350,
2.6430

■ 78.1040, 5.6390,
2.4310

■ 55.8050, 5.0430,
2.2190

■ 33.8050, 5.0430,

2.2190

■ 11.7020, 6.8310,
2.8550

■ 0.0000, 0.0000,
0.0000

■ 207.7020, 6.8310,
2.8550

■ 207.7020, 6.8310,
2.8550

■ 192.5080, 19.3010,
8.1410

■ 222.8960, -5.6390,
-2.4310

■ 177.9010, 31.4960,
12.9040

■ 237.5030,
-17.8340, -7.1940

■ 162.8210, 43.6450,
18.5010

■ 243.3390,
-23.2440, -8.2680

■ 148.2140, 55.8400,
23.2640

■ 133.0200, 68.3100,
28.5500

■ 117.8260, 80.7800,
33.8360

■ 103.2190, 92.9750,
38.5990

■ 88.1390, 105.1240,
44.1960

■ 73.5320, 117.3190,
48.9590

Harmonies

Analogous

The Analogous color harmony consists of three colors that are next to each other on the color wheel.



207.5600, 4.3550, 3.6750



207.7020, 6.8310, 2.8550



207.8330, 7.8400, 1.0880

Triad

The Triadic color harmony groups three colors that are evenly spaced from another and form a triangle on the color wheel.



207.7020, 6.8310, 2.8550



205.8920, 0.1840, -3.3360



206.4060, -7.0150, 0.4810

Complementary

The Complementary color scheme is a pair of colors which are on the opposite of each other on the color wheel.



207.7020, 6.8310, 2.8550



212.2980, -6.8310, -2.8550

Split Complementary

Split-complementary colors differ from the complementary color scheme. The scheme consists of three colors, the original color and two neighbors of the complement color.



205.7540, -8.1150, -1.6110



207.7020, 6.8310, 2.8550



205.4400, -4.3550, -3.6750

Square

The Square scheme is like the rectangle color scheme, but the four colors are evenly spaced on the color wheel.



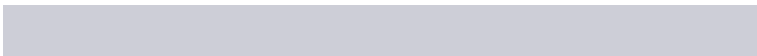
207.7020, 6.8310, 2.8550



206.3870, 3.1640, -2.2760



205.2980, -6.8310, -2.8550



206.7270, -3.4850, 2.5870

Rectangle

The Rectangle color scheme consists of four colors that form a rectangle on the color wheel.



207.7020, 6.8310, 2.8550



207.0070, 7.2900, 0.0420



205.2980, -6.8310, -2.8550



205.9930, -7.2900, -0.0420

Sweetspot

The Sweet Spot groups the original color and five complimentary colors.



207.7020, 6.8310, 2.8550



251.4950, 2.9800, 1.0600



208.6570, 2.7040, 6.0640



125.8970, 1.7880, 0.6360



0.0000, 0.0000, 0.0000



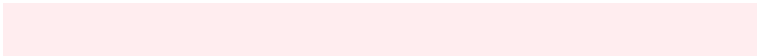
128.0000, -0.0000, -0.0000

Same Dimension

The Same Dimension uses a secret algorithm to generate beautiful new colors.



207.7020, 6.8310, 2.8550



242.6100, 10.0860, 4.4380



210.5230, 5.7770, -0.0710



101.3920, 4.7680, 1.6960



52.7250, 97.4220, 40.6060



13.3130, 24.3440, 10.3600

Inverse Universe

The Inverse Universe completely reimagines the original color for something new.



207.7020, 6.8310, 2.8550



242.6100, 10.0860, 4.4380



209.4770, -5.7770, 0.0710



101.3920, 4.7680, 1.6960



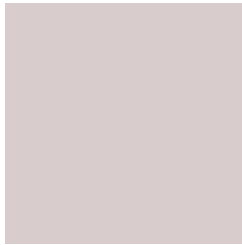
52.7250, 97.4220, 40.6060



13.3130, 24.3440, 10.3600

Previews

White Background



This preview shows how the YIQ color 207.7020, 6.8310, 2.8550 looks on a white background.

Color Contrast Check

Large Text (above 18pt) WCAG AA × Fail

Any Text WCAG AA × Fail

Large Text (above 18pt) WCAG AAA × Fail

Any Text WCAG AAA × Fail

Black Background



This preview shows how the YIQ color 207.7020, 6.8310, 2.8550 looks on a black background.

Color Contrast Check

Large Text (above 18pt) WCAG AA ✓ Pass

Any Text WCAG AA ✓ Pass

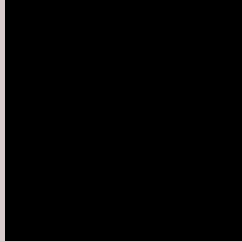
Large Text (above 18pt) WCAG AAA ✓ Pass

Any Text WCAG AAA ✓ Pass

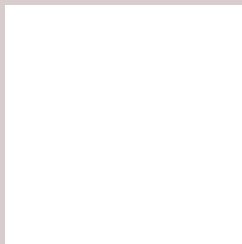
If you want to check with other color combinations, try the [Color Contrast Checker](#).

YIQ 207.7020, 6.8310, 2.8550

Background



This preview shows how black text looks on a background with the YIQ color 207.7020, 6.8310, 2.8550.



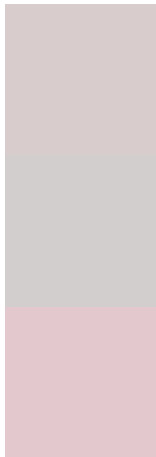
This preview shows how white text looks on a background with the YIQ color 207.7020, 6.8310,

2.8550.

Color Blindness Simulation

Color vision deficiency is a very complex topic, and I could not describe the different causes any better than Wikipedia does, so if you want to learn more, you should check out their [article about color blindness](#).

Dichromacy



Original Color

207.7020, 6.8310, 2.8550

Protanopia

207.1960, 2.3840, 0.8480

Deuteranopia

208.7570, 14.1660, 7.5900



Tritanopia

208.6080, 4.4000, 8.3680

Trichromacy



Original Color

207.7020, 6.8310, 2.8550

Protanomaly

207.2070, 3.8510, 1.7950

Deuteranomaly

208.1480, 11.5070, 6.2190

Tritanomaly

208.3260, 5.1340, 6.0780

Monochromacy



Original Color

207.7020, 6.8310, 2.8550

Achromatopsia

208.0000, -0.0000, -0.0000

Achromatomaly

208.1960, 2.3840, 0.8480

CSS Examples

Text

The CSS property to change the color of the text to YIQ 207.7020, 6.8310, 2.8550 is called "color". The color property can be set on classes, ids or directly on the HTML element.

This example shows how text in the color `rgb(216, 204, 205)` looks like.

```
.text, #text, p{  
    color:rgb(216, 204, 205)  
}
```

If you want to add a text shadow in that color use the text-shadow property, you can generate a text shadow directly with our [CSS Text Shadow Generator](#).

Here you see how black text with a 4 pixel rgb(216, 204, 205) colored shadow looks like.

```
.shadow{ text-shadow: 4px 4px 2px rgb(216, 204, 205) }
```

Border

The CSS property to change the border of an element to YIQ 207.7020, 6.8310, 2.8550 is called "border". The border property can be set on classes, ids or directly on the HTML element.

This example shows the color as border, it can be applied via the CSS property "border" or "border-color".

```
.border, #border, table{ border:4px solid rgb(216, 204, 205) }
```


If only the border color should be changed use the property `border-color`.

```
.border{ border-color:rgb(216, 204, 205) }
```

If you want to add a box shadow in that color use:

Here you see how a box with a 4 pixel `rgb(216, 204, 205)` colored shadow looks like.

```
.boxshadow{ -moz-box-shadow:4px 4px 4px  
4px rgb(216, 204, 205); -webkit-box-  
shadow:4px 4px 4px 4px rgb(216, 204, 205);  
box-shadow:4px 4px 4px 4px rgb(216, 204,  
205) }
```

Background

The CSS property to change the background color of an element to YIQ 207.7020, 6.8310, 2.8550 is called "background". The background property can be set on classes, ids or directly on the HTML element.

```
.background, #background, body{  
background: rgb(216, 204, 205) }
```

If only the background color should be changed can be used:

```
.background{ background-color: rgb(216,  
204, 205) }
```

This example shows the color as background, it is applied via the CSS property "background".

To optimize and compress your CSS code, you can use our [online CSS compressor and optimizer](#) based on csstidy. If you want to create a linear or radial gradient as background or border, check our [CSS Gradient Generator](#).

Hey! You found this booklet interesting? Support Converting Colors with the new Membership Option!

The pro membership hides all ads, plus gives you double the colors in the color bucket, and more awesome pro features!

[Learn more, Memberships starting at \\$2.50/m!](#)

**Follow me
on Twitter!**

@ConvertingColor