

Converting Colors

YIQ(208.2170, 24.2540, 0.9740)

Have a look what the booklet for
YIQ(208.2170, 24.2540, 0.9740)
contains.

YIQ(208.2170, 24.2540, 0.9740)	3
<i>Conversions</i>	4
<i>Details</i>	6
<i>Harmonies</i>	12
<i>Previews</i>	24
<i>Color Blindness Simulation</i>	28
<i>CSS Examples</i>	31

Color

**YIQ(208.2170, 24.2540,
0.9740)**

Conversions

Conversions Part 1

Format	Color
Hex	E8C9B7
RGB	232, 201, 183
RGB Percent	91%, 79%, 72%
CMY	0.0901, 0.2118, 0.2822
CMYK	0.00, 0.13, 0.21, 0.09
HSL	22°, 52%, 81%
HSV	22°, 21%, 91%
XYZ	62.7177, 62.3457, 53.5434
YIQ	208.2170, 24.2540, 0.9740

Conversions

Conversions Part 2

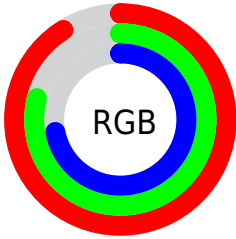
Format	Color
R _Y B	232, 211, 183
Decimal	15255991
CIE Lab	83.10, 8.16, 12.99
CIE LCh	83, 15.342, 57.884
Yxy	62.3457, 0.3511, 0.3491
Android (android.graphics.Color)	4293446071 (0xFFE8C9B7)
YUV	208.2170, -12.4320, 20.8577
Hunter-Lab	78.9593, 3.6044, 15.0661

Details

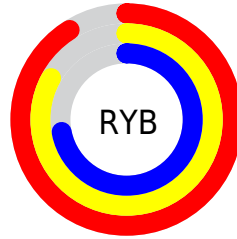
The YIQ color $208.2170, 24.2540, 0.9740$ is a light color, and the websafe version is hex `FFCCCC`. A complement of this color would be $206.7830, -24.2540, -0.9740$, and the grayscale version is $208.0000, -0.0000, -0.0000$.

A 20% lighter version of the original color is $253.1760, 5.1360, -4.9760$, and $153.7330, 22.7410, 0.8610$ is the 20% darker color. If you saturate the color by 10%, you get $196.7900, 35.7620, 1.6660$, and if you desaturate by 10%, it is $219.6440, 12.7460, 0.2820$.

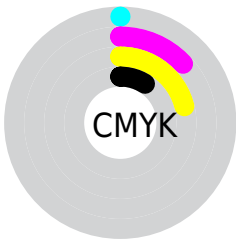
Distribution



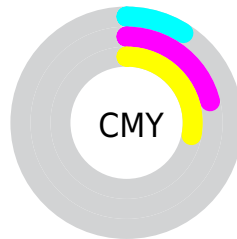
- Red (91%)
- Green (79%)
- Blue (72%)



- Red (91%)
- Yellow (83%)
- Blue (72%)



- Cyan (0%)
- Magenta (13%)
- Yellow (21%)
- Black (9%)





- Cyan (9%)
- Magenta (21%)
- Yellow (28%)

Brightness & Saturation Gradients


These gradients show how the YIQ color 208.2170, 24.2540, 0.9740 changes by changing the brightness by 10 percent. The first figure shows a shift by +10% for each color and the second figure -10%.


Similar to the brightness gradients but the following saturation gradients show a change of the YIQ color 208.2170, 24.2540, 0.9740 by changing the saturation by 10% instead.

 208.2170, 24.2540,
0.9740


 208.2170, 24.2540,
0.9740


255.0000, -0.0000,
-0.0000


 180.9180, 23.6580,
0.7620


 253.1760, 5.1360,
-4.9760

 153.7330, 22.7410,
0.8610

 127.5480, 21.8240,
0.9600

 102.3630, 20.9070,
1.0590

 78.4660, 19.1190,
0.4230

 55.2810, 18.2020,
0.5220

 33.3840, 16.4140,

-0.1140

■ 10.7200, 15.5880,
3.8440

■ 0.0000, 0.0000,
0.0000

■ 208.2170, 24.2540,
0.9740

■ 208.2170, 24.2540,
0.9740

■ 196.7900, 35.7620,
1.6660

■ 219.6440, 12.7460,
0.2820

■ 185.9500, 46.9950,
1.8350

■ 230.4840, 1.5130,
0.1130

■ 174.4090, 58.8240,
2.2160

■ 242.0250,
-10.3160, -0.2680

■ 162.9820, 70.3320,
2.9080

■ 248.1230,
-13.7080, -4.8760

■ 152.1420, 81.5650,
3.0770

■ 140.7150, 93.0730,
3.7690

■ 129.2880,
104.5810, 4.4610

■ 119.2630,
114.8970, 4.7290

Harmonies

Analogous

The Analogous color harmony consists of three colors that are next to each other on the color wheel.



209.5040, 25.1240, 7.2360



208.2170, 24.2540, 0.9740



206.9940, 17.3320, -5.7400

Triad

The Triadic color harmony groups three colors that are evenly spaced from another and form a triangle on the color wheel.



208.2170, 24.2540, 0.9740



201.9000, -20.6300, -11.5900



208.6870, -6.0080, 9.7680

Complementary

The Complementary color scheme is a pair of colors which are on the opposite of each other on the color wheel.



208.2170, 24.2540, 0.9740



206.7830, -24.2540, -0.9740

Split Complementary

Split-complementary colors differ from the complementary color scheme. The scheme consists of three colors, the original color and two neighbors of the complement color.



205.6960, -19.3950, 4.5810



208.2170, 24.2540, 0.9740



202.1150, -28.4250, -7.9850

Square

The Square scheme is like the rectangle color scheme, but the four colors are evenly spaced on the color wheel.



208.2170, 24.2540, 0.9740



203.3050, -8.7090, -12.8770



203.9890, -27.8300, -2.2460



209.5100, 7.7920, 12.9760

Rectangle

The Rectangle color scheme consists of four colors that form a rectangle on the color wheel.



208.2170, 24.2540, 0.9740



205.5800, 9.6300, -9.3300



203.9890, -27.8300, -2.2460



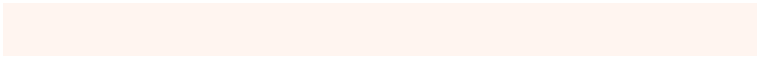
207.4090, -11.0970, 8.3830

Sweetspot

The Sweet Spot groups the original color and five complimentary colors.



208.2170, 24.2540, 0.9740



247.4200, 7.5650, 0.5650



201.1850, 19.2530, 20.0290



123.4520, 4.5390, 0.3390



0.0000, 0.0000, 0.0000



128.0000, -0.0000, -0.0000

Same Dimension

The Same Dimension uses a secret algorithm to generate beautiful new colors.



208.2170, 24.2540, 0.9740



224.2240, 31.5440, 1.0160



222.3050, 17.6540, -11.5780



108.9360, 6.0520, 0.4520



91.6760, 88.8090, 3.9530



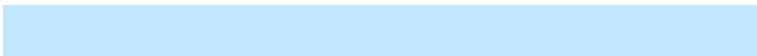
26.4020, 25.1710, 0.8750

Inverse Universe

The Inverse Universe completely reimagines the original color for something new.



206.7830, -24.2540, -0.9740



222.3630, -31.8190, -1.5390



192.6950, -17.6540, 11.5780



109.0640, -6.0520, -0.4520



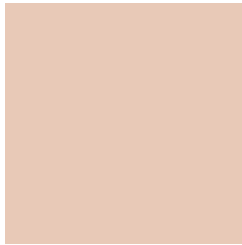
86.7370, -88.5340, -3.4300



24.5980, -25.1710, -0.8750

Previews

White Background



This preview shows how the YIQ color 208.2170, 24.2540, 0.9740 looks on a white background.

Color Contrast Check

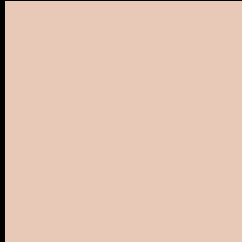
Large Text (above 18pt) WCAG AA × Fail

Any Text WCAG AA × Fail

Large Text (above 18pt) WCAG AAA × Fail

Any Text WCAG AAA × Fail

Black Background



This preview shows how the YIQ color 208.2170, 24.2540, 0.9740 looks on a black background.

Color Contrast Check

Large Text (above 18pt) WCAG AA ✓ Pass

Any Text WCAG AA ✓ Pass

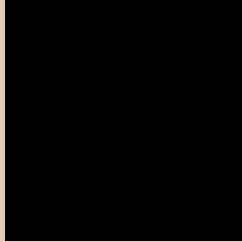
Large Text (above 18pt) WCAG AAA ✓ Pass

Any Text WCAG AAA ✓ Pass

If you want to check with other color combinations, try the [Color Contrast Checker](#).

YIQ 208.2170, 24.2540, 0.9740

Background



This preview shows how black text looks on a background with the YIQ color 208.2170, 24.2540, 0.9740.



This preview shows how white text looks on a background with the YIQ color 208.2170, 24.2540,

0.9740.

Color Blindness Simulation

Color vision deficiency is a very complex topic, and I could not describe the different causes any better than Wikipedia does, so if you want to learn more, you should check out their [article about color blindness](#).

Dichromacy



Original Color

208.2170, 24.2540, 0.9740

Protanopia

206.7100, 12.3800, -4.1000

Deuteranopia

208.8260, 26.9130, 2.3450



Tritanopia

210.3710, 18.4290, 12.9330

Trichromacy



Original Color

208.2170, 24.2540, 0.9740

Protanomaly

207.2160, 16.8270, -2.0930

Deuteranomaly

208.5270, 26.3170, 2.1330

Tritanomaly

209.4050, 21.0890, 8.7770

Monochromacy



Original Color

208.2170, 24.2540, 0.9740

Achromatopsia

208.0000, -0.0000, -0.0000

Achromatomaly

207.9040, 9.0780, 0.6780

CSS Examples

Text

The CSS property to change the color of the text to YIQ 208.2170, 24.2540, 0.9740 is called "color". The color property can be set on classes, ids or directly on the HTML element.

This example shows how text in the color `rgb(232, 201, 183)` looks like.

```
.text, #text, p{  
    color:rgb(232, 201, 183)  
}
```

If you want to add a text shadow in that color use the text-shadow property, you can generate a text shadow directly with our [CSS Text Shadow Generator](#).

Here you see how black text with a 4 pixel rgb(232, 201, 183) colored shadow looks like.

```
.shadow{ text-shadow: 4px 4px 2px rgb(232, 201, 183) }
```

Border

The CSS property to change the border of an element to YIQ 208.2170, 24.2540, 0.9740 is called "border". The border property can be set on classes, ids or directly on the HTML element.

This example shows the color as border, it can be applied via the CSS property "border" or "border-color".

```
.border, #border, table{ border:4px solid rgb(232, 201, 183) }
```


If only the border color should be changed use the property border-color.

```
.border{ border-color:rgb(232, 201, 183) }
```

If you want to add a box shadow in that color use:

Here you see how a box with a 4 pixel rgb(232, 201, 183) colored shadow looks like.

```
.boxshadow{ -moz-box-shadow:4px 4px 4px  
4px rgb(232, 201, 183); -webkit-box-  
shadow:4px 4px 4px 4px rgb(232, 201, 183);  
box-shadow:4px 4px 4px 4px rgb(232, 201,  
183) }
```

Background

The CSS property to change the background color of an element to YIQ 208.2170, 24.2540, 0.9740 is called "background". The background property can be set on classes, ids or directly on the HTML element.

```
.background, #background, body{  
background: rgb(232, 201, 183) }
```

If only the background color should be changed can be used:

```
.background{ background-color: rgb(232,  
201, 183) }
```

This example shows the color as background, it is applied via the CSS property "background".

To optimize and compress your CSS code, you can use our [online CSS compressor and optimizer](#) based on csstidy. If you want to create a linear or radial gradient as background or border, check our [CSS Gradient Generator](#).

Hey! You found this booklet interesting? Support Converting Colors with the new Membership Option!

The pro membership hides all ads, plus gives you double the colors in the color bucket, and more awesome pro features!

[Learn more, Memberships starting at \\$2.50/m!](#)

**Follow me
on Twitter!**

@ConvertingColor