

Converting Colors

YIQ(209.7900, 9.3990, 0.3670)

Have a look what the booklet for
YIQ(209.7900, 9.3990, 0.3670)
contains.

YIQ(209.7900, 9.3990, 0.3670)	3
<i>Conversions</i>	4
<i>Details</i>	6
<i>Harmonies</i>	12
<i>Previews</i>	24
<i>Color Blindness Simulation</i>	28
<i>CSS Examples</i>	31

Color

**YIQ(209.7900, 9.3990,
0.3670)**

Conversions

Conversions Part 1

Format	Color
Hex	DBCFC8
RGB	219, 207, 200
RGB Percent	86%, 81%, 78%
CMY	0.1411, 0.1882, 0.2156
CMYK	0.00, 0.05, 0.09, 0.14
HSL	22°, 21%, 82%
HSV	22°, 9%, 86%
XYZ	61.9535, 63.8549, 63.7102
YIQ	209.7900, 9.3990, 0.3670

Conversions

Conversions Part 2

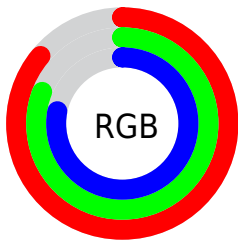
Format	Color
R _Y B	219, 211, 200
Decimal	14405576
CIE Lab	83.89, 2.96, 4.94
CIE LCh	84, 5.763, 59.069
Yxy	63.8549, 0.3269, 0.3369
Android (android.graphics.Color)	4292595656 (0xFFDBCFC8)
YUV	209.7900, -4.8265, 8.0772
Hunter-Lab	79.9092, -1.4505, 8.6656

Details

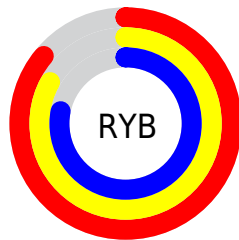
The YIQ color $209.7900, 9.3990, 0.3670$ is a light color, and the websafe version is hex `CCCCCC`. A complement of this color would be $209.2100, -9.3990, -0.3670$, and the grayscale version is $210.0000, 0.0000, 0.0000$.

A 20% lighter version of the original color is $255.0000, -0.0000, -0.0000$, and $155.4910, 8.8030, 0.1550$ is the 20% darker color. If you saturate the color by 10%, you get $199.0640, 20.3110, 0.8470$, and if you desaturate by 10%, it is $220.5160, -1.5130, -0.1130$.

Distribution



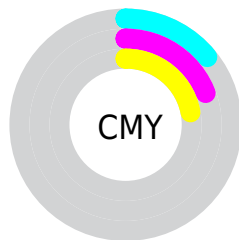
- Red (86%)
- Green (81%)
- Blue (78%)



- Red (86%)
- Yellow (83%)
- Blue (78%)



- Cyan (0%)
- Magenta (5%)
- Yellow (9%)
- Black (14%)



- Cyan (14%)
- Magenta (19%)
- Yellow (22%)

Brightness & Saturation Gradients

These gradients show how the YIQ color 209.7900, 9.3990, 0.3670 changes by changing the brightness by 10 percent. The first figure shows a shift by +10% for each color and the second figure -10%.

Similar to the brightness gradients but the following saturation gradients show a change of the YIQ color 209.7900, 9.3990, 0.3670 by changing the saturation by 10% instead.

■ 209.7900, 9.3990,
0.3670

■ 209.7900, 9.3990,
0.3670

255.0000, -0.0000,
-0.0000

■ 181.9040, 9.0780,
0.6780

■ 155.4910, 8.8030,
0.1550

■ 129.4910, 8.8030,
0.1550

■ 104.3060, 7.8860,
0.2540

■ 80.3060, 7.8860,
0.2540

■ 57.1210, 6.9690,
0.3530

■ 35.8220, 6.3730,

0.1410

■ 13.5620, 10.0410,
-0.2550

■ 0.0000, 0.0000,
0.0000

■ 209.7900, 9.3990,
0.3670

■ 209.7900, 9.3990,
0.3670

■ 199.0640, 20.3110,
0.8470

■ 220.5160, -1.5130,
-0.1130

■ 188.3380, 31.2230,
1.3270

■ 231.2420,
-12.4250, -0.5930

■ 177.6120, 42.1350,
1.8070

■ 240.7140,
-19.8060, -4.4940

■ 167.4730, 52.7720,
1.7640

■ 244.2360,
-21.4560, -7.6320

■ 156.8610, 63.3630,
2.5550

■ 146.1350, 74.2750,
3.0350

■ 135.4090, 85.1870,
3.5150

■ 124.6830, 96.0990,
3.9950

■ 113.9570,
107.0110, 4.4750

Harmonies

Analogous

The Analogous color harmony consists of three colors that are next to each other on the color wheel.



210.2570, 9.5820, 2.5580



209.7900, 9.3990, 0.3670



209.2410, 6.5110, -2.3610

Triad

The Triadic color harmony groups three colors that are evenly spaced from another and form a triangle on the color wheel.



209.7900, 9.3990, 0.3670



207.1730, -7.9770, -4.1130



209.8520, -2.3390, 3.8450

Complementary

The Complementary color scheme is a pair of colors which are on the opposite of each other on the color wheel.



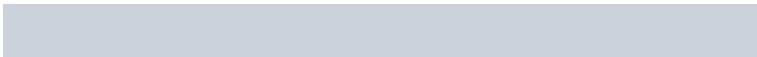
209.7900, 9.3990, 0.3670



209.2100, -9.3990, -0.3670

Split Complementary

Split-complementary colors differ from the complementary color scheme. The scheme consists of three colors, the original color and two neighbors of the complement color.



209.3460, -6.7860, 1.8380



209.7900, 9.3990, 0.3670



207.4440, -10.1780, -2.7700

Square

The Square scheme is like the rectangle color scheme, but the four colors are evenly spaced on the color wheel.



209.7900, 9.3990, 0.3670



207.9840, -3.0710, -4.9190



207.9110, -9.9950, -0.5790



210.0160, 3.0710, 4.9190

Rectangle

The Rectangle color scheme consists of four colors that form a rectangle on the color wheel.



209.7900, 9.3990, 0.3670



208.7460, 3.5310, -3.4210



207.9110, -9.9950, -0.5790



209.2540, -3.5310, 3.4210

Sweetspot

The Sweet Spot groups the original color and five complimentary colors.



209.7900, 9.3990, 0.3670



251.1530, 3.9430, 0.1270



207.0490, 7.4720, 7.7600



124.9680, 3.0260, 0.2260



0.0000, 0.0000, 0.0000



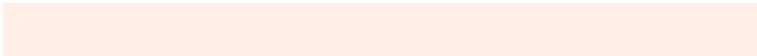
128.0000, -0.0000, -0.0000

Same Dimension

The Same Dimension uses a secret algorithm to generate beautiful new colors.



209.7900, 9.3990, 0.3670



242.7580, 12.4250, 0.5930



215.0730, 6.9240, -4.3400



104.6370, 5.4560, 0.2400



89.2950, 85.5080, 3.2040



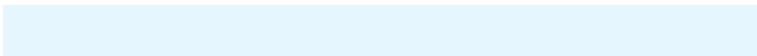
23.7330, 22.7410, 0.8610

Inverse Universe

The Inverse Universe completely reimagines the original color for something new.



209.2100, -9.3990, -0.3670



242.2420, -12.4250, -0.5930



203.9270, -6.9240, 4.3400



104.3630, -5.4560, -0.2400



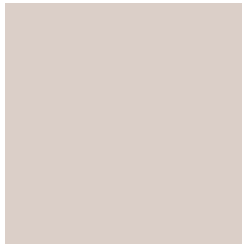
84.2920, -85.7830, -3.7270



22.2670, -22.7410, -0.8610

Previews

White Background



This preview shows how the YIQ color 209.7900, 9.3990, 0.3670 looks on a white background.

Color Contrast Check

Large Text (above 18pt) WCAG AA × Fail

Any Text WCAG AA × Fail

Large Text (above 18pt) WCAG AAA × Fail

Any Text WCAG AAA × Fail

Black Background



This preview shows how the YIQ color 209.7900, 9.3990, 0.3670 looks on a black background.

Color Contrast Check

Large Text (above 18pt) WCAG AA ✓ Pass

Any Text WCAG AA ✓ Pass

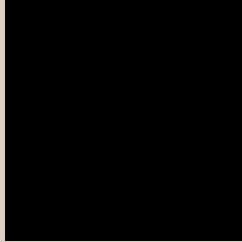
Large Text (above 18pt) WCAG AAA ✓ Pass

Any Text WCAG AAA ✓ Pass

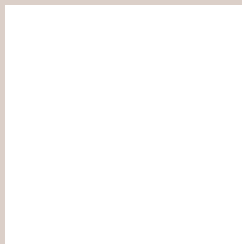
If you want to check with other color combinations, try the [Color Contrast Checker](#).

YIQ 209.7900, 9.3990, 0.3670

Background



This preview shows how black text looks on a background with the YIQ color 209.7900, 9.3990, 0.3670.



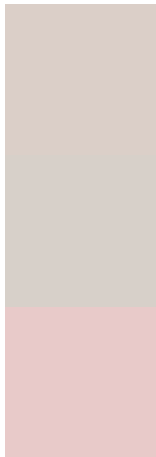
This preview shows how white text looks on a background with the YIQ color 209.7900, 9.3990,

0.3670.

Color Blindness Simulation

Color vision deficiency is a very complex topic, and I could not describe the different causes any better than Wikipedia does, so if you want to learn more, you should check out their [article about color blindness](#).

Dichromacy



Original Color

209.7900, 9.3990, 0.3670

Protanopia

209.2950, 6.4190, -0.6930

Deuteranopia

210.8560, 18.2010, 6.0490



Tritanopia

211.2060, 5.5920, 8.7920

Trichromacy



Original Color

209.7900, 9.3990, 0.3670

Protanomaly

209.5940, 7.0150, -0.4810

Deuteranomaly

210.5350, 14.6710, 3.9430

Tritanomaly

210.6960, 6.9680, 5.8800

Monochromacy



Original Color

209.7900, 9.3990, 0.3670

Achromatopsia

210.0000, 0.0000, 0.0000

Achromatomaly

209.8540, 3.3470, -0.0850

CSS Examples

Text

The CSS property to change the color of the text to YIQ 209.7900, 9.3990, 0.3670 is called "color". The color property can be set on classes, ids or directly on the HTML element.

This example shows how text in the color `rgb(219, 207, 200)` looks like.

```
.text, #text, p{  
    color:rgb(219, 207, 200)  
}
```

If you want to add a text shadow in that color use the text-shadow property, you can generate a text shadow directly with our [CSS Text Shadow Generator](#).

Here you see how black text with a 4 pixel rgb(219, 207, 200) colored shadow looks like.

```
.shadow{ text-shadow: 4px 4px 2px rgb(219, 207, 200) }
```

Border

The CSS property to change the border of an element to YIQ 209.7900, 9.3990, 0.3670 is called "border". The border property can be set on classes, ids or directly on the HTML element.

This example shows the color as border, it can be applied via the CSS property "border" or "border-color".

```
.border, #border, table{ border:4px solid rgb(219, 207, 200) }
```


If only the border color should be changed use the property `border-color`.

```
.border{ border-color:rgb(219, 207, 200) }
```

If you want to add a box shadow in that color use:

Here you see how a box with a 4 pixel `rgb(219, 207, 200)` colored shadow looks like.

```
.boxshadow{ -moz-box-shadow:4px 4px 4px  
4px rgb(219, 207, 200); -webkit-box-  
shadow:4px 4px 4px 4px rgb(219, 207, 200);  
box-shadow:4px 4px 4px 4px rgb(219, 207,  
200) }
```

Background

The CSS property to change the background color of an element to YIQ 209.7900, 9.3990, 0.3670 is called "background". The background property can be set on classes, ids or directly on the HTML element.

```
.background, #background, body{  
background: rgb(219, 207, 200) }
```

If only the background color should be changed can be used:

```
.background{ background-color: rgb(219,  
207, 200) }
```

This example shows the color as background, it is applied via the CSS property "background".

To optimize and compress your CSS code, you can use our [online CSS compressor and optimizer](#) based on csstidy. If you want to create a linear or radial gradient as background or border, check our [CSS Gradient Generator](#).

Hey! You found this booklet interesting? Support Converting Colors with the new Membership Option!

The pro membership hides all ads, plus gives you double the colors in the color bucket, and more awesome pro features!

[Learn more, Memberships starting at \\$2.50/m!](#)

**Follow me
on Twitter!**

@ConvertingColor