

Converting Colors

YIQ(21.0950, 19.0260, 7.6180)

Have a look what the booklet for
YIQ(21.0950, 19.0260, 7.6180)
contains.

YIQ(21.0950, 19.0260, 7.6180)	3
<i>Conversions</i>	4
<i>Details</i>	6
<i>Harmonies</i>	12
<i>Previews</i>	24
<i>Color Blindness Simulation</i>	28
<i>CSS Examples</i>	31

Color

**YIQ(21.0950, 19.0260,
7.6180)**

Conversions

Conversions Part 1

Format	Color
Hex	2C0B0D
RGB	44, 11, 13
RGB Percent	17%, 4%, 5%
CMY	0.8274, 0.9569, 0.9489
CMYK	0.00, 0.75, 0.70, 0.83
HSL	356°, 60%, 11%
HSV	356°, 75%, 17%
XYZ	1.2319, 0.8041, 0.4717
YIQ	21.0950, 19.0260, 7.6180

Conversions

Conversions Part 2

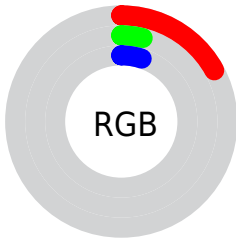
Format	Color
R_{YB}	44, 11, 13
Decimal	2886413
CIE Lab	7.26, 17.18, 5.78
CIE LCh	7, 18.121, 18.586
Yxy	0.8041, 0.4913, 0.3206
Android (android.graphics.Color)	4281076493 (0xFF2C0B0D)
YUV	21.0950, -3.9908, 20.0877
Hunter-Lab	8.9669, 8.8299, 3.1581

Details

The YIQ color **21.0950, 19.0260, 7.6180** is a dark color, and the websafe version is hex **330000**. A complement of this color would be **33.9050, -19.0260, -7.6180**, and the grayscale version is **21.0000, -0.0000, -0.0000**.

A 20% lighter version of the original color is **65.5900, 22.0060, 8.6780**, and **0.0000, 0.0000, 0.0000** is the 20% darker color. If you saturate the color by 10%, you get **18.2910, 21.4100, 8.4660**, and if you desaturate by 10%, it is **23.8990, 16.6420, 6.7700**.

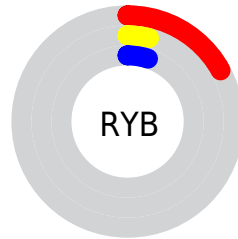
Distribution



Red (17%)

Green (4%)

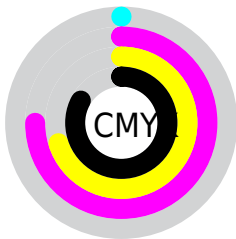
Blue (5%)



Red (17%)

Yellow (4%)

Blue (5%)

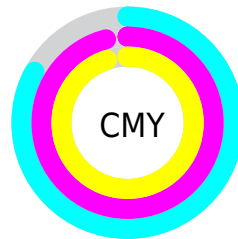


Cyan (0%)

Magenta (75%)

Yellow (70%)

Black (83%)



Cyan (83%)

Magenta (96%)

Yellow (95%)

Brightness & Saturation Gradients

These gradients show how the YIQ color 21.0950, 19.0260, 7.6180 changes by changing the brightness by 10 percent. The first figure shows a shift by +10% for each color and the second figure -10%.

Similar to the brightness gradients but the following saturation gradients show a change of the YIQ color 21.0950, 19.0260, 7.6180 by changing the saturation by 10% instead.

■ 21.0950, 19.0260,
7.6180

■ 21.0950, 19.0260,
7.6180

■ 241.2080, 11.2780,
4.8620

■ 4.1860, 8.3440,
2.9680

■ 65.5900, 22.0060,
8.6780

■ 0.0000, 0.0000,
0.0000

■ 89.1880, 23.1980,
9.1020

■ 113.7860, 24.3900,
9.5260

■ 139.9710, 25.3070,
9.4270

■ 166.5690, 26.4990,
9.8510

■ 193.2810, 27.3700,

10.5860

■ 221.4660, 28.2870,
10.4870

■ 21.0950, 19.0260,
7.6180

■ 21.0950, 19.0260,
7.6180

■ 18.2910, 21.4100,
8.4660

■ 23.8990, 16.6420,
6.7700

■ 14.9000, 24.0690,
9.8370

■ 27.2900, 13.9830,
5.3990

■ 13.4980, 25.2610,
10.2610

■ 30.0940, 11.5990,
4.5510

■ 33.5990, 8.6190,
3.4910

■ 36.4030, 6.2350,
2.6430

■ 39.2070, 3.8510,
1.7950

■ 42.5980, 1.1920,
0.4240

■ 45.4020, -1.1920,
-0.4240

■ 48.7930, -3.8510,
-1.7950

Harmonies

Analogous

The Analogous color harmony consists of three colors that are next to each other on the color wheel.



21.7940, 12.7440, 11.3360



21.0950, 19.0260, 7.6180



21.0640, 20.3110, 0.8470

Triad

The Triadic color harmony groups three colors that are evenly spaced from another and form a triangle on the color wheel.



21.0950, 19.0260, 7.6180



17.3440, -4.4450, -13.0610



19.8050, -21.3200, 0.9200

Complementary

The Complementary color scheme is a pair of colors which are on the opposite of each other on the color wheel.



21.0950, 19.0260, 7.6180



33.9050, -19.0260, -7.6180

Split Complementary

Split-complementary colors differ from the complementary color scheme. The scheme consists of three colors, the original color and two neighbors of the complement color.



20.9960, -20.5400, -2.2040



21.0950, 19.0260, 7.6180



18.8470, -13.1110, -10.1910

Square

The Square scheme is like the rectangle color scheme, but the four colors are evenly spaced on the color wheel.



21.0950, 19.0260, 7.6180



20.6660, 6.5120, -7.8880



20.3290, -17.2840, -6.1480



21.6430, -11.8760, 5.9800

Rectangle

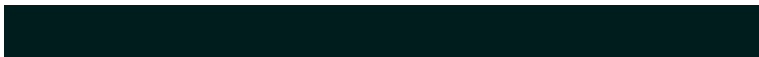
The Rectangle color scheme consists of four colors that form a rectangle on the color wheel.



21.0950, 19.0260, 7.6180



21.3300, 16.5060, -1.7820



20.3290, -17.2840, -6.1480



20.2780, -21.2740, 0.0860

Sweetspot

The Sweet Spot groups the original color and five complimentary colors.



21.0950, 19.0260, 7.6180



47.0010, 7.4270, 3.0670



24.0310, 7.8830, 16.8350



22.5060, 4.4470, 2.0070



156.0000, -0.0000, -0.0000



28.0000, -0.0000, 0.0000

Same Dimension

The Same Dimension uses a secret algorithm to generate beautiful new colors.



21.0950, 19.0260, 7.6180



21.2920, 28.8370, 11.5330



29.0850, 15.8180, -0.3260



21.5980, 1.1920, 0.4240



26.5830, 50.2470, 19.9990



65.4680, 123.3710, 49.4110

Inverse Universe

The Inverse Universe completely reimagines the original color for something new.



21.0950, 19.0260, 7.6180



21.2920, 28.8370, 11.5330



25.9150, -15.8180, 0.3260



21.5980, 1.1920, 0.4240



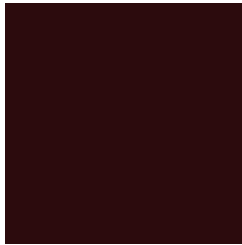
26.5830, 50.2470, 19.9990



65.4680, 123.3710, 49.4110

Previews

White Background



This preview shows how the YIQ color 21.0950, 19.0260, 7.6180 looks on a white background.

Color Contrast Check

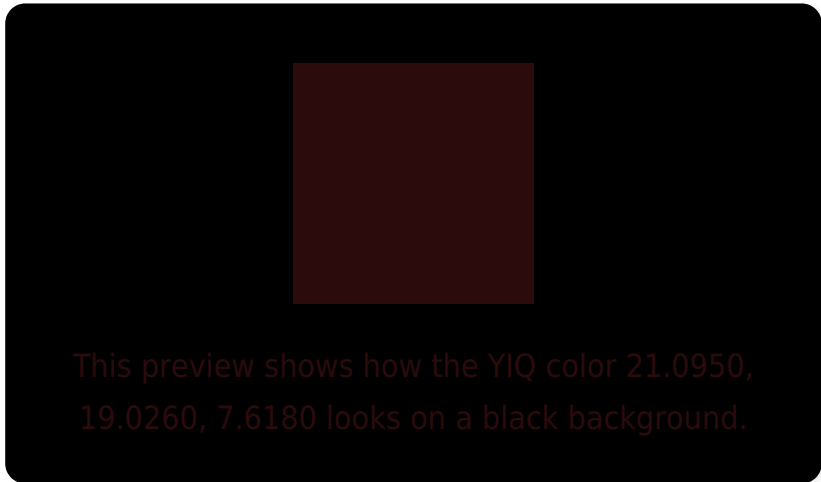
Large Text (above 18pt) WCAG AA ✓ Pass

Any Text WCAG AA ✓ Pass

Large Text (above 18pt) WCAG AAA ✓ Pass

Any Text WCAG AAA ✓ Pass

Black Background



Color Contrast Check

Large Text (above 18pt) WCAG AA × Fail

Any Text WCAG AA × Fail

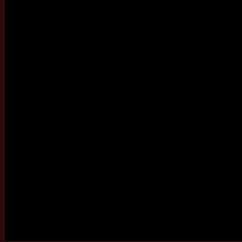
Large Text (above 18pt) WCAG AAA × Fail

Any Text WCAG AAA × Fail

If you want to check with other color combinations, try the [Color Contrast Checker](#).

YIQ 21.0950, 19.0260, 7.6180

Background



This preview shows how black text looks on a background with the YIQ color 21.0950, 19.0260, 7.6180.



This preview shows how white text looks on a background with the YIQ color 21.0950, 19.0260,

Color Blindness Simulation

Color vision deficiency is a very complex topic, and I could not describe the different causes any better than Wikipedia does, so if you want to learn more, you should check out their [article about color blindness](#).

Dichromacy



Original Color

21.0950, 19.0260, 7.6180

Protanopia

23.9140, 3.1180, -1.4420

Deuteranopia

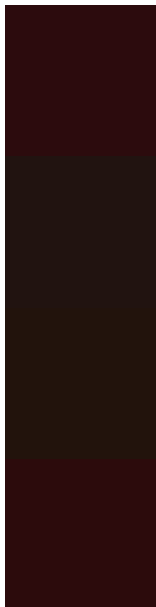
23.4260, 7.4280, -2.4600



Tritanopia

20.9810, 19.3470, 7.3070

Trichromacy



Original Color

21.0950, 19.0260, 7.6180

Protanomaly

22.8440, 9.3070, 2.0350

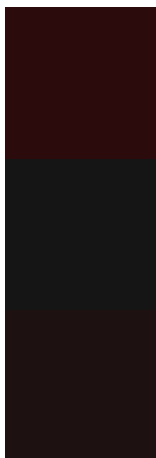
Deuteranomaly

22.6870, 11.1870, 1.0030

Tritanomaly

20.9810, 19.3470, 7.3070

Monochromacy



Original Color

21.0950, 19.0260, 7.6180

Achromatopsia

21.0000, -0.0000, -0.0000

Achromatomaly

20.7020, 6.8310, 2.8550

CSS Examples

Text

The CSS property to change the color of the text to YIQ 21.0950, 19.0260, 7.6180 is called "color". The color property can be set on classes, ids or directly on the HTML element.

This example shows how text in the color `rgb(44, 11, 13)` looks like.

```
.text, #text, p{  
    color:rgb(44, 11, 13)  
}
```

If you want to add a text shadow in that color use the text-shadow property, you can generate a text shadow directly with our [CSS Text Shadow Generator](#).

Here you see how black text with a 4 pixel rgb(44, 11, 13) colored shadow looks like.

```
.shadow{ text-shadow: 4px 4px 2px rgb(44, 11, 13) }
```

Border

The CSS property to change the border of an element to YIQ 21.0950, 19.0260, 7.6180 is called "border". The border property can be set on classes, ids or directly on the HTML element.

This example shows the color as border, it can be applied via the CSS property "border" or "border-color".

```
.border, #border, table{ border:4px solid rgb(44, 11, 13) }
```


If only the border color should be changed use the property border-color.

```
.border{ border-color:rgb(44, 11, 13) }
```

If you want to add a box shadow in that color use:

Here you see how a box with a 4 pixel rgb(44, 11, 13) colored shadow looks like.

```
.boxshadow{ -moz-box-shadow:4px 4px 4px  
4px rgb(44, 11, 13); -webkit-box-  
shadow:4px 4px 4px 4px rgb(44, 11, 13);  
box-shadow:4px 4px 4px 4px rgb(44, 11, 13)  
}
```

Background

The CSS property to change the background color of an element to YIQ 21.0950, 19.0260, 7.6180 is called "background". The background property can be set on classes, ids or directly on the HTML element.

```
.background, #background, body{  
background: rgb(44, 11, 13) }
```

If only the background color should be changed can be used:

```
.background{ background-color: rgb(44, 11,  
13) }
```

This example shows the color as background, it is applied via the CSS property "background".

To optimize and compress your CSS code, you can use our [online CSS compressor and optimizer](#) based on csstidy. If you want to create a linear or radial gradient as background or border, check our [CSS Gradient Generator](#).

Hey! You found this booklet interesting? Support Converting Colors with the new Membership Option!

The pro membership hides all ads, plus gives you double the colors in the color bucket, and more awesome pro features!

[Learn more, Memberships starting at \\$2.50/m!](#)

**Follow me
on Twitter!**

@ConvertingColor