

Converting Colors

YIQ(210.8560, 18.2010, 6.0490)

Have a look what the booklet for
YIQ(210.8560, 18.2010, 6.0490)
contains.

YIQ(210.8560, 18.2010, 6.0490)	3
<i>Conversions</i>	4
<i>Details</i>	6
<i>Harmonies</i>	12
<i>Previews</i>	24
<i>Color Blindness Simulation</i>	28
<i>CSS Examples</i>	31

Color

**YIQ(210.8560, 18.2010,
6.0490)**

Conversions

Conversions Part 1

Format	Color
Hex	E8CAC9
RGB	232, 202, 201
RGB Percent	91%, 79%, 79%
CMY	0.0901, 0.2079, 0.2117
CMYK	0.00, 0.13, 0.13, 0.09
HSL	2°, 40%, 85%
HSV	2°, 13%, 91%
XYZ	64.9469, 63.6119, 64.1251
YIQ	210.8560, 18.2010, 6.0490

Conversions

Conversions Part 2

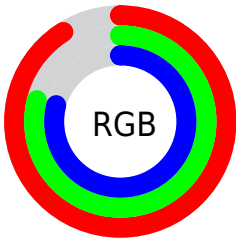
Format	Color
R _Y B	232, 202, 201
Decimal	15256265
CIE Lab	83.76, 10.38, 4.36
CIE LCh	84, 11.261, 22.792
Yxy	63.6119, 0.3371, 0.3301
Android (android.graphics.Color)	4293446345 (0xFFE8CAC9)
YUV	210.8560, -4.8590, 18.5433
Hunter-Lab	79.7571, 5.7794, 8.1605

Details

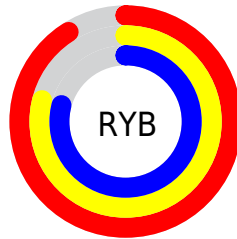
The YIQ color **210.8560, 18.2010, 6.0490** is a light color, and the websafe version is hex **FFCCCC**. A complement of this color would be **222.1440, -18.2010, -6.0490**, and the grayscale version is **211.0000, 0.0000, -0.0000**.

A 20% lighter version of the original color is **255.0000, -0.0000, -0.0000**, and **156.2580, 17.0090, 5.6250** is the 20% darker color. If you saturate the color by 10%, you get **195.3200, 31.6340, 10.4020**, and if you desaturate by 10%, it is **226.3920, 4.7680, 1.6960**.

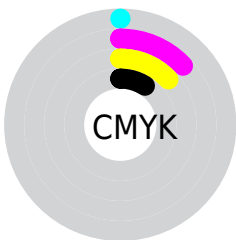
Distribution



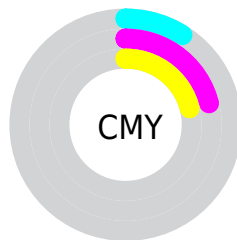
- Red (91%)
- Green (79%)
- Blue (79%)



- Red (91%)
- Yellow (79%)
- Blue (79%)



- Cyan (0%)
- Magenta (13%)
- Yellow (13%)
- Black (9%)



- Cyan (9%)
- Magenta (21%)
- Yellow (21%)

Brightness & Saturation Gradients

These gradients show how the YIQ color 210.8560, 18.2010, 6.0490 changes by changing the brightness by 10 percent. The first figure shows a shift by +10% for each color and the second figure -10%.

Similar to the brightness gradients but the following saturation gradients show a change of the YIQ color 210.8560, 18.2010, 6.0490 by changing the saturation by 10% instead.

210.8560, 18.2010,
6.0490

210.8560, 18.2010,
6.0490

255.0000, -0.0000,
-0.0000

183.5570, 17.6050,
5.8370

156.2580, 17.0090,
5.6250

129.9590, 16.4130,
5.4130

104.7740, 15.4960,
5.5120

80.4750, 14.9000,
5.3000

57.7630, 14.0290,
4.5650

35.5780, 13.1120,

4.6640

■ 12.6600, 15.8170,
5.2010

■ 0.0000, 0.0000,
0.0000

■ 210.8560, 18.2010,
6.0490

■ 210.8560, 18.2010,
6.0490

■ 195.3200, 31.6340,
10.4020

■ 226.3920, 4.7680,
1.6960

■ 179.1970, 45.3420,
15.2780

■ 242.5150, -8.9400,
-3.1800

■ 163.5470, 59.0960,
19.3200

■ 248.1230,
-13.7080, -4.8760

■ 147.4240, 72.8040,
24.1960

■ 131.8880, 86.2370,
28.5490

■ 115.7650, 99.9450,
33.4250

■ 100.2290,
113.3780, 37.7780

■ 83.9920, 127.4070,
42.3430

■ 73.4770, 136.3470,
45.5230

Harmonies

Analogous

The Analogous color harmony consists of three colors that are next to each other on the color wheel.



211.2130, 12.8820, 8.8340



210.8560, 18.2010, 6.0490



210.1070, 18.7520, 1.5680

Triad

The Triadic color harmony groups three colors that are evenly spaced from another and form a triangle on the color wheel.



210.8560, 18.2010, 6.0490



206.2780, -4.0790, -8.6790



207.7950, -15.3600, 3.0400

Complementary

The Complementary color scheme is a pair of colors which are on the opposite of each other on the color wheel.



210.8560, 18.2010, 6.0490



222.1440, -18.2010, -6.0490

Split Complementary

Split-complementary colors differ from the complementary color scheme. The scheme consists of three colors, the original color and two neighbors of the complement color.



205.9960, -20.5400, -2.2040



210.8560, 18.2010, 6.0490



205.6020, -13.7990, -8.7350

Square

The Square scheme is like the rectangle color scheme, but the four colors are evenly spaced on the color wheel.



210.8560, 18.2010, 6.0490



207.8940, 5.8700, -7.2660



205.6600, -19.7140, -6.1620



209.6930, -6.1450, 6.7430

Rectangle

The Rectangle color scheme consists of four colors that form a rectangle on the color wheel.



210.8560, 18.2010, 6.0490



209.4440, 16.1850, -1.4710



205.6600, -19.7140, -6.1620



207.6590, -17.9730, 0.8350

Sweetspot

The Sweet Spot groups the original color and five complimentary colors.



210.8560, 18.2010, 6.0490



247.9900, 5.9600, 2.1200



213.8030, 8.5250, 16.2130



123.0930, 4.1720, 1.4840



0.0000, 0.0000, 0.0000



128.0000, -0.0000, -0.0000

Same Dimension

The Same Dimension uses a secret algorithm to generate beautiful new colors.



210.8560, 18.2010, 6.0490



226.8460, 24.1610, 8.1690



219.6610, 14.0760, -1.7960



107.1750, 6.8770, 2.0210



57.0430, 105.0340, 34.8100



16.4230, 29.8460, 9.7660

Inverse Universe

The Inverse Universe completely reimagines the original color for something new.



222.1440, -18.2010, -6.0490



242.1540, -24.1610, -8.1690



213.3390, -14.0760, 1.7960



110.8250, -6.8770, -2.0210



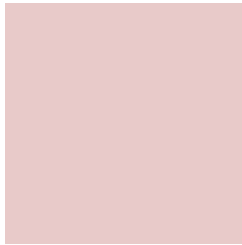
121.9570, -105.0340, -34.8100



34.5770, -29.8460, -9.7660

Previews

White Background



This preview shows how the YIQ color 210.8560, 18.2010, 6.0490 looks on a white background.

Color Contrast Check

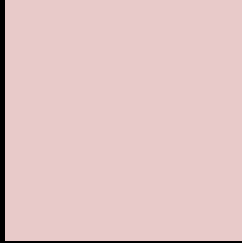
Large Text (above 18pt) WCAG AA × Fail

Any Text WCAG AA × Fail

Large Text (above 18pt) WCAG AAA × Fail

Any Text WCAG AAA × Fail

Black Background



This preview shows how the YIQ color 210.8560, 18.2010, 6.0490 looks on a black background.

Color Contrast Check

Large Text (above 18pt) WCAG AA ✓ Pass

Any Text WCAG AA ✓ Pass

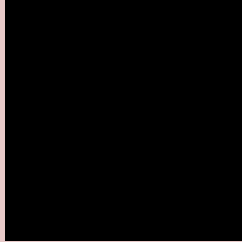
Large Text (above 18pt) WCAG AAA ✓ Pass

Any Text WCAG AAA ✓ Pass

If you want to check with other color combinations, try the [Color Contrast Checker](#).

YIQ 210.8560, 18.2010, 6.0490

Background



This preview shows how black text looks on a background with the YIQ color 210.8560, 18.2010, 6.0490.



This preview shows how white text looks on a background with the YIQ color 210.8560, 18.2010,

Color Blindness Simulation

Color vision deficiency is a very complex topic, and I could not describe the different causes any better than Wikipedia does, so if you want to learn more, you should check out their [article about color blindness](#).

Dichromacy



Original Color

210.8560, 18.2010, 6.0490

Protanopia

209.3380, 4.8600, 0.0280

Deuteranopia

210.8560, 18.2010, 6.0490



Tritanopia

211.8760, 15.4490, 11.8730

Trichromacy



Original Color

210.8560, 18.2010, 6.0490

Protanomaly

210.1430, 9.9030, 2.2470

Deuteranomaly

210.8560, 18.2010, 6.0490

Tritanomaly

211.5940, 16.1830, 9.5830

Monochromacy



Original Color

210.8560, 18.2010, 6.0490

Achromatopsia

211.0000, 0.0000, -0.0000

Achromatomaly

211.1750, 6.8770, 2.0210

CSS Examples

Text

The CSS property to change the color of the text to YIQ 210.8560, 18.2010, 6.0490 is called "color". The color property can be set on classes, ids or directly on the HTML element.

This example shows how text in the color `rgb(232, 202, 201)` looks like.

```
.text, #text, p{  
    color:rgb(232, 202, 201)  
}
```

If you want to add a text shadow in that color use the text-shadow property, you can generate a text shadow directly with our [CSS Text Shadow Generator](#).

Here you see how black text with a 4 pixel rgb(232, 202, 201) colored shadow looks like.

```
.shadow{ text-shadow: 4px 4px 2px rgb(232, 202, 201) }
```

Border

The CSS property to change the border of an element to YIQ 210.8560, 18.2010, 6.0490 is called "border". The border property can be set on classes, ids or directly on the HTML element.

This example shows the color as border, it can be applied via the CSS property "border" or "border-color".

```
.border, #border, table{ border:4px solid rgb(232, 202, 201) }
```


If only the border color should be changed use the property `border-color`.

```
.border{ border-color:rgb(232, 202, 201) }
```

If you want to add a box shadow in that color use:

Here you see how a box with a 4 pixel `rgb(232, 202, 201)` colored shadow looks like.

```
.boxshadow{ -moz-box-shadow:4px 4px 4px  
4px rgb(232, 202, 201); -webkit-box-  
shadow:4px 4px 4px 4px rgb(232, 202, 201);  
box-shadow:4px 4px 4px 4px rgb(232, 202,  
201) }
```

Background

The CSS property to change the background color of an element to YIQ 210.8560, 18.2010, 6.0490 is called "background". The background property can be set on classes, ids or directly on the HTML element.

```
.background, #background, body{  
background: rgb(232, 202, 201) }
```

If only the background color should be changed can be used:

```
.background{ background-color: rgb(232,  
202, 201) }
```

This example shows the color as background, it is applied via the CSS property "background".

To optimize and compress your CSS code, you can use our [online CSS compressor and optimizer](#) based on csstidy. If you want to create a linear or radial gradient as background or border, check our [CSS Gradient Generator](#).

Hey! You found this booklet interesting? Support Converting Colors with the new Membership Option!

The pro membership hides all ads, plus gives you double the colors in the color bucket, and more awesome pro features!

[Learn more, Memberships starting at \\$2.50/m!](#)

**Follow me
on Twitter!**

@ConvertingColor