

# Converting Colors

YIQ(210.8930, 16.7790, 9.7950)

Have a look what the booklet for  
YIQ(210.8930, 16.7790, 9.7950)  
contains.

<b>YIQ(210.8930, 16.7790, 9.7950)</b> .....	3
<b><i>Conversions</i></b> .....	4
<b><i>Details</i></b> .....	6
<b><i>Harmonies</i></b> .....	12
<b><i>Previews</i></b> .....	24
<b><i>Color Blindness Simulation</i></b> .....	28
<b><i>CSS Examples</i></b> .....	31

# Color

**YIQ(210.8930, 16.7790,  
9.7950)**

# Conversions

## Conversions Part 1

Format	Color
Hex	E9C8D1
RGB	233, 200, 209
RGB Percent	91%, 78%, 82%
CMY	0.0862, 0.2157, 0.1803
CMYK	0.00, 0.14, 0.10, 0.09
HSL	344°, 43%, 85%
HSV	344°, 14%, 91%
XYZ	65.7729, 63.2336, 69.0702
YIQ	210.8930, 16.7790, 9.7950

# Conversions

## Conversions Part 2

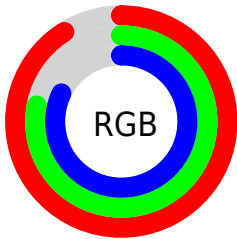
Format	Color
R <sub>Y</sub> B	233, 200, 209
Decimal	15321297
CIE Lab	83.57, 13.09, -0.18
CIE LCh	84, 13.096, 359.203
Yxy	63.2336, 0.3321, 0.3192
Android (android.graphics.Color)	4293511377 (0xFFE9C8D1)
YUV	210.8930, -0.9332, 19.3878
Hunter-Lab	79.5196, 8.4831, 4.1648

# Details

The YIQ color **210.8930, 16.7790, 9.7950** is a light color, and the websafe version is hex **FFCCCC**. A complement of this color would be **222.1070, -16.7790, -9.7950**, and the grayscale version is **211.0000, 0.0000, -0.0000**.

A 20% lighter version of the original color is **255.0000, -0.0000, -0.0000**, and **156.2950, 15.5870, 9.3710** is the 20% darker color. If you saturate the color by 10%, you get **195.4540, 28.5610, 16.5370**, and if you desaturate by 10%, it is **226.3320, 4.9970, 3.0530**.

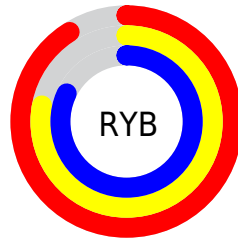
# Distribution



Red (91%)

Green (78%)

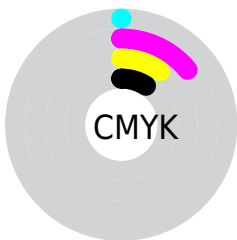
Blue (82%)



Red (91%)

Yellow (78%)

Blue (82%)

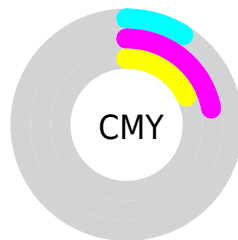


Cyan (0%)

Magenta (14%)

Yellow (10%)

Black (9%)



Cyan (9%)

Magenta (22%)

Yellow (18%)

# Brightness & Saturation Gradients

These gradients show how the YIQ color 210.8930, 16.7790, 9.7950 changes by changing the brightness by 10 percent. The first figure shows a shift by +10% for each color and the second figure -10%.

Similar to the brightness gradients but the following saturation gradients show a change of the YIQ color 210.8930, 16.7790, 9.7950 by changing the saturation by 10% instead.



210.8930, 16.7790,  
9.7950

210.8930, 16.7790,  
9.7950

255.0000, -0.0000,  
-0.0000

183.4800, 16.5040,  
9.2720

156.2950, 15.5870,  
9.3710

129.9960, 14.9910,  
9.1590

104.6970, 14.3950,  
8.9470

80.9850, 13.5240,  
8.2120

57.6860, 12.9280,  
8.0000

35.9740, 12.0570,

7.2650

■ 12.9250, 13.7530,  
9.5690

■ 0.0000, 0.0000,  
0.0000

■ 210.8930, 16.7790,  
9.7950

■ 210.8930, 16.7790,  
9.7950

■ 195.4540, 28.5610,  
16.5370

■ 226.3320, 4.9970,  
3.0530

■ 179.4280, 40.6180,  
23.8020

■ 242.3580, -7.0600,  
-4.2120

■ 163.9890, 52.4000,  
30.5440

■ 248.4220,  
-13.1120, -4.6640

■ 148.5500, 64.1820,  
37.2860

■ 132.5240, 76.2390,  
44.5510

■ 117.0850, 88.0210,  
51.2930

■ 101.6460, 99.8030,  
58.0350

■ 86.3210, 111.2640,  
65.0880

■ 76.9630, 118.3240,  
69.3000

# Harmonies

## Analogous

The Analogous color harmony consists of three colors that are next to each other on the color wheel.



210.7440, 7.0130, 10.5730



210.8930, 16.7790, 9.7950



210.7100, 21.5480, 5.9640

# Triad

The Triadic color harmony groups three colors that are evenly spaced from another and form a triangle on the color wheel.



210.8930, 16.7790, 9.7950



206.4700, 4.1280, -8.7360



205.5550, -23.6120, -1.5960

# Complementary

The Complementary color scheme is a pair of colors which are on the opposite of each other on the color wheel.



210.8930, 16.7790, 9.7950



222.1070, -16.7790, -9.7950

# Split Complementary

Split-complementary colors differ from the complementary color scheme. The scheme consists of three colors, the original color and two neighbors of the complement color.



204.2080, -24.2530, -6.5010



210.8930, 16.7790, 9.7950



204.9570, -7.6090, -10.7850

# Square

The Square scheme is like the rectangle color scheme, but the four colors are evenly spaced on the color wheel.



210.8930, 16.7790, 9.7950



207.9660, 14.5350, -4.6090



204.5090, -17.9710, -10.2190



207.5500, -16.0480, 4.4960



# Rectangle

The Rectangle color scheme consists of four colors that form a rectangle on the color wheel.



210.8930, 16.7790, 9.7950



209.6020, 21.7320, 2.6280



204.5090, -17.9710, -10.2190



205.2020, -24.1160, -3.4760

# Sweetspot

The Sweet Spot groups the original color and five complimentary colors.



210.8930, 16.7790, 9.7950



248.3320, 4.9970, 3.0530



210.9380, 3.7110, 15.3510



123.3210, 3.5300, 2.1060



0.0000, 0.0000, 0.0000



128.0000, -0.0000, -0.0000



# Same Dimension

The Same Dimension uses a secret algorithm to generate beautiful new colors.



210.8930, 16.7790, 9.7950



226.1110, 22.0970, 12.5370



213.9760, 17.7430, 3.3350



109.6310, 5.5930, 3.2650



59.7050, 92.1470, 53.6110



17.8560, 27.3690, 16.1130



# Inverse Universe

The Inverse Universe completely reimagines the original color for something new.



210.8930, 16.7790, 9.7950



226.1110, 22.0970, 12.5370



219.0240, -17.7430, -3.3350



109.6310, 5.5930, 3.2650



59.7050, 92.1470, 53.6110



17.8560, 27.3690, 16.1130



# Previews

## White Background



This preview shows how the YIQ color 210.8930, 16.7790, 9.7950 looks on a white background.

## Color Contrast Check

Large Text (above 18pt) WCAG AA × Fail

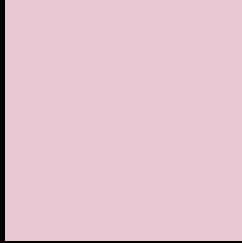
Any Text WCAG AA × Fail

Large Text (above 18pt) WCAG AAA × Fail

Any Text WCAG AAA × Fail



# Black Background



This preview shows how the YIQ color 210.8930, 16.7790, 9.7950 looks on a black background.

## Color Contrast Check

Large Text (above 18pt) WCAG AA ✓ Pass

Any Text WCAG AA ✓ Pass

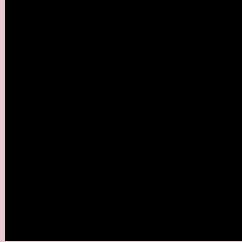
Large Text (above 18pt) WCAG AAA ✓ Pass

Any Text WCAG AAA ✓ Pass

If you want to check with other color combinations, try the [Color Contrast Checker](#).

# YIQ 210.8930, 16.7790, 9.7950

## Background



This preview shows how black text looks on a background with the YIQ color 210.8930, 16.7790, 9.7950.



This preview shows how white text looks on a background with the YIQ color 210.8930, 16.7790,

9.7950.

# Color Blindness Simulation

Color vision deficiency is a very complex topic, and I could not describe the different causes any better than Wikipedia does, so if you want to learn more, you should check out their [article about color blindness](#).

## Dichromacy



### Original Color

210.8930, 16.7790, 9.7950

### Protanopia

208.8800, 0.4580, 2.7140

### Deuteranopia

210.5720, 13.2490, 7.6890



## Tritanopia

211.2890, 15.7240, 12.3960

# Trichromacy



## Original Color

210.8930, 16.7790, 9.7950

## Protanomaly

209.3970, 6.3720, 5.6680

## Deuteranomaly

210.5830, 14.7160, 8.6360

## Tritanomaly

211.0610, 16.3660, 11.7740

# Monochromacy



## Original Color

210.8930, 16.7790, 9.7950

## Achromatopsia

211.0000, 0.0000, -0.0000

## Achromatomaly

210.9300, 6.1890, 3.4770

# CSS Examples

## Text

The CSS property to change the color of the text to YIQ 210.8930, 16.7790, 9.7950 is called "color". The color property can be set on classes, ids or directly on the HTML element.

This example shows how text in the color `rgb(233, 200, 209)` looks like.

```
.text, #text, p{  
    color:rgb(233, 200, 209)  
}
```

If you want to add a text shadow in that color use the text-shadow property, you can generate a text shadow directly with our [CSS Text Shadow Generator](#).

Here you see how black text with a 4 pixel rgb(233, 200, 209) colored shadow looks like.

```
.shadow{ text-shadow: 4px 4px 2px rgb(233, 200, 209) }
```

## Border

The CSS property to change the border of an element to YIQ 210.8930, 16.7790, 9.7950 is called "border". The border property can be set on classes, ids or directly on the HTML element.

This example shows the color as border, it can be applied via the CSS property "border" or "border-color".

```
.border, #border, table{ border:4px solid rgb(233, 200, 209) }
```



If only the border color should be changed use the property `border-color`.

```
.border{ border-color:rgb(233, 200, 209) }
```

If you want to add a box shadow in that color use:

Here you see how a box with a 4 pixel `rgb(233, 200, 209)` colored shadow looks like.

```
.boxshadow{ -moz-box-shadow:4px 4px 4px  
4px rgb(233, 200, 209); -webkit-box-  
shadow:4px 4px 4px 4px rgb(233, 200, 209);  
box-shadow:4px 4px 4px 4px rgb(233, 200,  
209) }
```

# Background

The CSS property to change the background color of an element to YIQ 210.8930, 16.7790, 9.7950 is called "background". The background property can be set on classes, ids or directly on the HTML element.

```
.background, #background, body{  
background: rgb(233, 200, 209) }
```

If only the background color should be changed can be used:

```
.background{ background-color: rgb(233,  
200, 209) }
```

This example shows the color as background, it is applied via the CSS property "background".

To optimize and compress your CSS code, you can use our [online CSS compressor and optimizer](#) based on csstidy. If you want to create a linear or radial gradient as background or border, check our [CSS Gradient Generator](#).

Hey! You found this booklet interesting? Support Converting Colors with the new Membership Option!

The pro membership hides all ads, plus gives you double the colors in the color bucket, and more awesome pro features!

**[Learn more, Memberships starting at \\$2.50/m!](#)**

**Follow me  
on Twitter!**

@ConvertingColor