

Converting Colors

YIQ(211.3560, 13.6170, 1.0170)

Have a look what the booklet for
YIQ(211.3560, 13.6170, 1.0170)
contains.

YIQ(211.3560, 13.6170, 1.0170)	3
<i>Conversions</i>	4
<i>Details</i>	6
<i>Harmonies</i>	12
<i>Previews</i>	24
<i>Color Blindness Simulation</i>	28
<i>CSS Examples</i>	31

Color

**YIQ(211.3560, 13.6170,
1.0170)**

Conversions

Conversions Part 1

Format	Color
Hex	E1CFC6
RGB	225, 207, 198
RGB Percent	88%, 81%, 78%
CMY	0.1176, 0.1882, 0.2235
CMYK	0.00, 0.08, 0.12, 0.12
HSL	20°, 31%, 83%
HSV	20°, 12%, 88%
XYZ	63.5601, 64.7090, 62.5756
YIQ	211.3560, 13.6170, 1.0170

Conversions

Conversions Part 2

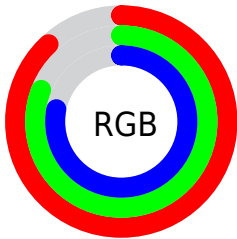
Format	Color
R _Y B	225, 212, 198
Decimal	14798790
CIE Lab	84.33, 4.77, 6.71
CIE LCh	84, 8.228, 54.598
Yxy	64.7090, 0.3330, 0.3391
Android (android.graphics.Color)	4292988870 (0xFFE1CFC6)
YUV	211.3560, -6.5845, 11.9658
Hunter-Lab	80.4419, 0.2661, 10.1877

Details

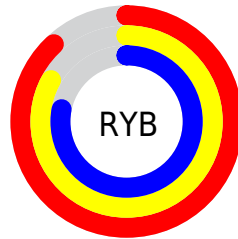
The YIQ color **211.3560, 13.6170, 1.0170** is a light color, and the websafe version is hex **CCCCCC**. A complement of this color would be **211.6440, -13.6170, -1.0170**, and the grayscale version is **211.0000, 0.0000, -0.0000**.

A 20% lighter version of the original color is **255.0000, -0.0000, -0.0000**, and **157.0570, 13.0210, 0.8050** is the 20% darker color. If you saturate the color by 10%, you get **200.0430, 24.8040, 2.0200**, and if you desaturate by 10%, it is **222.7830, 2.1090, 0.3250**.

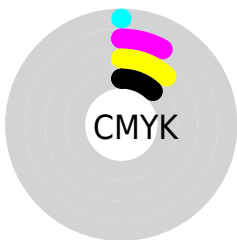
Distribution



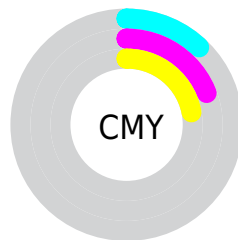
- Red (88%)
- Green (81%)
- Blue (78%)



- Red (88%)
- Yellow (83%)
- Blue (78%)



- Cyan (0%)
- Magenta (8%)
- Yellow (12%)
- Black (12%)



- Cyan (12%)
- Magenta (19%)
- Yellow (22%)

Brightness & Saturation Gradients

These gradients show how the YIQ color 211.3560, 13.6170, 1.0170 changes by changing the brightness by 10 percent. The first figure shows a shift by +10% for each color and the second figure -10%.

Similar to the brightness gradients but the following saturation gradients show a change of the YIQ color 211.3560, 13.6170, 1.0170 by changing the saturation by 10% instead.

■ 211.3560, 13.6170,
1.0170

■ 211.3560, 13.6170,
1.0170

255.0000, -0.0000,
-0.0000

■ 183.4700, 13.2960,
1.3280

■ 157.0570, 13.0210,
0.8050

■ 130.8720, 12.1040,
0.9040

■ 105.5730, 11.5080,
0.6920

■ 81.2740, 10.9120,
0.4800

■ 58.3880, 10.5910,
0.7910

■ 36.7900, 9.3990,

0.3670

■ 14.5300, 13.0670,
-0.0290

■ 0.0000, 0.0000,
0.0000

■ 211.3560, 13.6170,
1.0170

■ 211.3560, 13.6170,
1.0170

■ 200.0430, 24.8040,
2.0200

■ 222.7830, 2.1090,
0.3250

■ 188.6160, 36.3120,
2.7120

■ 234.0960, -9.0780,
-0.6780

■ 177.3030, 47.4990,
3.7150

■ 244.2690,
-17.0550, -4.7910

■ 165.8760, 59.0070,
4.4070

■ 246.0300,
-17.8800, -6.3600

■ 154.5630, 70.1940,
5.4100

■ 143.1360, 81.7020,
6.1020

■ 131.8230, 92.8890,
7.1050

■ 120.3960,
104.3970, 7.7970

■ 111.3000,
113.4750, 8.4750

Harmonies

Analogous

The Analogous color harmony consists of three colors that are next to each other on the color wheel.



212.3500, 13.7540, 4.0420



211.3560, 13.6170, 1.0170



210.3940, 10.4540, -2.2340

Triad

The Triadic color harmony groups three colors that are evenly spaced from another and form a triangle on the color wheel.



211.3560, 13.6170, 1.0170



208.0370, -10.5900, -6.3180



211.0090, -4.2190, 4.8770

Complementary

The Complementary color scheme is a pair of colors which are on the opposite of each other on the color wheel.



211.3560, 13.6170, 1.0170



211.6440, -13.6170, -1.0170

Split Complementary

Split-complementary colors differ from the complementary color scheme. The scheme consists of three colors, the original color and two neighbors of the complement color.



209.7200, -10.7750, 2.5450



211.3560, 13.6170, 1.0170



208.3510, -14.3500, -4.2540

Square

The Square scheme is like the rectangle color scheme, but the four colors are evenly spaced on the color wheel.



211.3560, 13.6170, 1.0170



208.6310, -3.5750, -6.7990



209.0460, -14.8090, -1.4410



211.9560, 3.3000, 6.2760

Rectangle

The Rectangle color scheme consists of four colors that form a rectangle on the color wheel.



211.3560, 13.6170, 1.0170



209.7740, 6.3280, -4.5520



209.0460, -14.8090, -1.4410



210.8130, -6.6030, 4.0290

Sweetspot

The Sweet Spot groups the original color and five complimentary colors.



211.3560, 13.6170, 1.0170



249.7510, 5.1350, 0.5510



208.1250, 10.3140, 11.3220



124.2670, 3.6220, 0.4380



0.0000, 0.0000, 0.0000



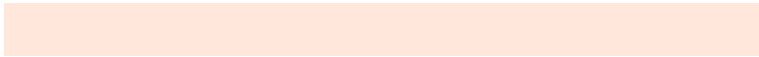
128.0000, -0.0000, -0.0000

Same Dimension

The Same Dimension uses a secret algorithm to generate beautiful new colors.



211.3560, 13.6170, 1.0170



236.8080, 18.1560, 1.3560



218.9870, 10.0420, -5.7820



106.6370, 5.4560, 0.2400



87.2570, 88.6710, 6.4550



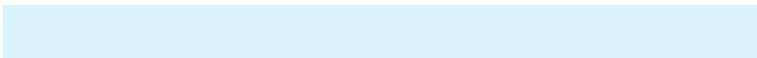
23.7440, 24.2080, 1.8080

Inverse Universe

The Inverse Universe completely reimagines the original color for something new.



211.6440, -13.6170, -1.0170



237.1920, -18.1560, -1.3560



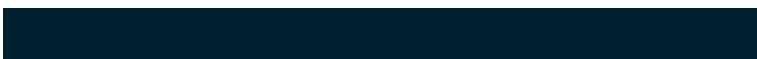
204.0130, -10.0420, 5.7820



106.3630, -5.4560, -0.2400



88.7430, -88.6710, -6.4550



24.2560, -24.2080, -1.8080

Previews

White Background



This preview shows how the YIQ color 211.3560, 13.6170, 1.0170 looks on a white background.

Color Contrast Check

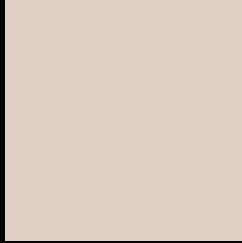
Large Text (above 18pt) WCAG AA × Fail

Any Text WCAG AA × Fail

Large Text (above 18pt) WCAG AAA × Fail

Any Text WCAG AAA × Fail

Black Background



This preview shows how the YIQ color 211.3560, 13.6170, 1.0170 looks on a black background.

Color Contrast Check

Large Text (above 18pt) WCAG AA ✓ Pass

Any Text WCAG AA ✓ Pass

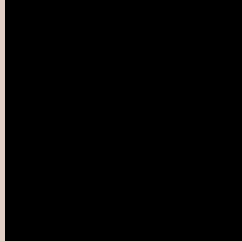
Large Text (above 18pt) WCAG AAA ✓ Pass

Any Text WCAG AAA ✓ Pass

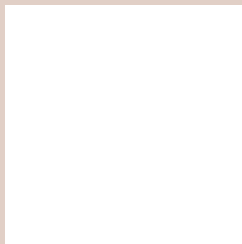
If you want to check with other color combinations, try the [Color Contrast Checker](#).

YIQ 211.3560, 13.6170, 1.0170

Background



This preview shows how black text looks on a background with the YIQ color 211.3560, 13.6170, 1.0170.



This preview shows how white text looks on a background with the YIQ color 211.3560, 13.6170,

Color Blindness Simulation

Color vision deficiency is a very complex topic, and I could not describe the different causes any better than Wikipedia does, so if you want to learn more, you should check out their [article about color blindness](#).

Dichromacy



Original Color

211.3560, 13.6170, 1.0170

Protanopia

210.8390, 7.7030, -1.9370

Deuteranopia

212.1120, 20.3560, 5.5400



Tritanopia

213.0000, 9.1680, 10.0640

Trichromacy



Original Color

211.3560, 13.6170, 1.0170

Protanomaly

211.1490, 9.7660, -0.7780

Deuteranomaly

211.5030, 17.6970, 4.1690

Tritanomaly

212.3760, 10.8650, 6.8410

Monochromacy



Original Color

211.3560, 13.6170, 1.0170

Achromatopsia

211.0000, 0.0000, -0.0000

Achromatomaly

211.3380, 4.8600, 0.0280

CSS Examples

Text

The CSS property to change the color of the text to YIQ 211.3560, 13.6170, 1.0170 is called "color". The color property can be set on classes, ids or directly on the HTML element.

This example shows how text in the color `rgb(225, 207, 198)` looks like.

```
.text, #text, p{  
    color:rgb(225, 207, 198)  
}
```

If you want to add a text shadow in that color use the text-shadow property, you can generate a text shadow directly with our [CSS Text Shadow Generator](#).

Here you see how black text with a 4 pixel rgb(225, 207, 198) colored shadow looks like.

```
.shadow{ text-shadow: 4px 4px 2px rgb(225, 207, 198) }
```

Border

The CSS property to change the border of an element to YIQ 211.3560, 13.6170, 1.0170 is called "border". The border property can be set on classes, ids or directly on the HTML element.

This example shows the color as border, it can be applied via the CSS property "border" or "border-color".

```
.border, #border, table{ border:4px solid rgb(225, 207, 198) }
```


If only the border color should be changed use the property `border-color`.

```
.border{ border-color:rgb(225, 207, 198) }
```

If you want to add a box shadow in that color use:

Here you see how a box with a 4 pixel `rgb(225, 207, 198)` colored shadow looks like.

```
.boxshadow{ -moz-box-shadow:4px 4px 4px  
4px rgb(225, 207, 198); -webkit-box-  
shadow:4px 4px 4px 4px rgb(225, 207, 198);  
box-shadow:4px 4px 4px 4px rgb(225, 207,  
198) }
```

Background

The CSS property to change the background color of an element to YIQ 211.3560, 13.6170, 1.0170 is called "background". The background property can be set on classes, ids or directly on the HTML element.

```
.background, #background, body{  
background: rgb(225, 207, 198) }
```

If only the background color should be changed can be used:

```
.background{ background-color: rgb(225,  
207, 198) }
```

This example shows the color as background, it is applied via the CSS property "background".

To optimize and compress your CSS code, you can use our [online CSS compressor and optimizer](#) based on csstidy. If you want to create a linear or radial gradient as background or border, check our [CSS Gradient Generator](#).

Hey! You found this booklet interesting? Support Converting Colors with the new Membership Option!

The pro membership hides all ads, plus gives you double the colors in the color bucket, and more awesome pro features!

[Learn more, Memberships starting at \\$2.50/m!](#)

**Follow me
on Twitter!**

@ConvertingColor