

Converting Colors

YIQ(211.3830, 18.1550, 6.8830)

Have a look what the booklet for
YIQ(211.3830, 18.1550, 6.8830)
contains.

YIQ(211.3830, 18.1550, 6.8830)	3
<i>Conversions</i>	4
<i>Details</i>	6
<i>Harmonies</i>	12
<i>Previews</i>	24
<i>Color Blindness Simulation</i>	28
<i>CSS Examples</i>	31

Color

**YIQ(211.3830, 18.1550,
6.8830)**

Conversions

Conversions Part 1

Format	Color
Hex	E9CACB
RGB	233, 202, 203
RGB Percent	91%, 79%, 80%
CMY	0.0862, 0.2079, 0.2038
CMYK	0.00, 0.13, 0.13, 0.09
HSL	358°, 41%, 85%
HSV	358°, 13%, 91%
XYZ	65.5096, 63.8744, 65.3875
YIQ	211.3830, 18.1550, 6.8830

Conversions

Conversions Part 2

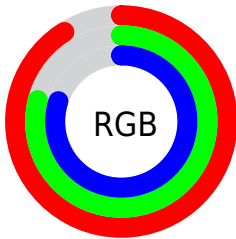
Format	Color
RYP	233, 202, 203
Decimal	15321803
CIELab	83.90, 11.06, 3.51
CIElCh	84, 11.602, 17.589
Yxy	63.8744, 0.3363, 0.3279
Android (android.graphics.Color)	4293511883 (0xFFE9CACB)
YUV	211.3830, -4.1328, 18.9581
Hunter-Lab	79.9215, 6.4493, 7.4371

Details

The YIQ color **211.3830, 18.1550, 6.8830** is a light color, and the websafe version is hex **FFCCCC**. A complement of this color would be **223.6170, -18.1550, -6.8830**, and the grayscale version is **211.0000, 0.0000, -0.0000**.

A 20% lighter version of the original color is **255.0000, -0.0000, -0.0000**, and **156.7850, 16.9630, 6.4590** is the 20% darker color. If you saturate the color by 10%, you get **195.2600, 31.8630, 11.7590**, and if you desaturate by 10%, it is **227.5060, 4.4470, 2.0070**.

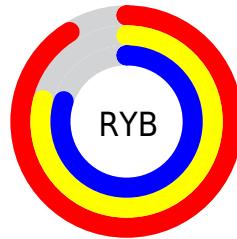
Distribution



Red (91%)

Green (79%)

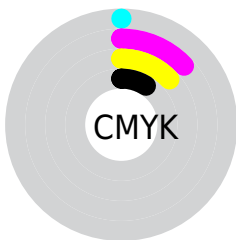
Blue (80%)



Red (91%)

Yellow (79%)

Blue (80%)

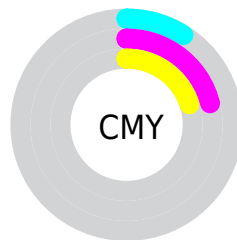


Cyan (0%)

Magenta (13%)

Yellow (13%)

Black (9%)



Cyan (9%)

Magenta (21%)

Yellow (20%)

Brightness & Saturation Gradients

These gradients show how the YIQ color 211.3830, 18.1550, 6.8830 changes by changing the brightness by 10 percent. The first figure shows a shift by +10% for each color and the second figure -10%.

Similar to the brightness gradients but the following saturation gradients show a change of the YIQ color 211.3830, 18.1550, 6.8830 by changing the saturation by 10% instead.

211.3830, 18.1550,
6.8830

211.3830, 18.1550,
6.8830

255.0000, -0.0000,
-0.0000

184.0840, 17.5590,
6.6710

156.7850, 16.9630,
6.4590

130.4860, 16.3670,
6.2470

105.1870, 15.7710,
6.0350

81.0020, 14.8540,
6.1340

58.2900, 13.9830,
5.3990

35.8060, 12.4700,

5.2860

■ 13.1870, 15.7710,
6.0350

■ 0.0000, 0.0000,
0.0000

■ 211.3830, 18.1550,
6.8830

■ 211.3830, 18.1550,
6.8830

■ 195.2600, 31.8630,
11.7590

■ 227.5060, 4.4470,
2.0070

■ 178.6640, 45.5250,
17.4690

■ 244.1020, -9.2150,
-3.7030

■ 162.5410, 59.2330,
22.3450

■ 248.4220,
-13.1120, -4.6640

■ 146.5320, 72.6200,
27.5320

■ 129.8220, 86.6030,
32.9310

■ 113.8130, 99.9900,
38.1180

■ 97.6900, 113.6980,
42.9940

■ 81.6810, 127.0850,
48.1810

■ 70.5790, 136.3000,
51.8840

Harmonies

Analogous

The Analogous color harmony consists of three colors that are next to each other on the color wheel.



211.4410, 12.2400, 9.4560



211.3830, 18.1550, 6.8830



210.8190, 19.6230, 2.3030

Triad

The Triadic color harmony groups three colors that are evenly spaced from another and form a triangle on the color wheel.



211.3830, 18.1550, 6.8830



207.2350, -2.5200, -9.4000



208.3710, -17.1020, 1.5700

Complementary

The Complementary color scheme is a pair of colors which are on the opposite of each other on the color wheel.



211.3830, 18.1550, 6.8830



223.6170, -18.1550, -6.8830

Split Complementary

Split-complementary colors differ from the complementary color scheme. The scheme consists of three colors, the original color and two neighbors of the complement color.



206.2840, -21.4110, -2.9390



211.3830, 18.1550, 6.8830



205.6730, -12.5610, -9.1450

Square

The Square scheme is like the rectangle color scheme, but the four colors are evenly spaced on the color wheel.



211.3830, 18.1550, 6.8830



207.7910, 7.6580, -6.6300



205.7200, -19.9430, -7.5190



209.9100, -8.2540, 6.4180

Rectangle

The Rectangle color scheme consists of four colors that form a rectangle on the color wheel.



211.3830, 18.1550, 6.8830



210.0420, 17.3770, -1.0470



205.7200, -19.9430, -7.5190



207.6480, -19.4400, -0.1120

Sweetspot

The Sweet Spot groups the original color and five complimentary colors.



211.3830, 18.1550, 6.8830



247.9900, 5.9600, 2.1200



214.5040, 7.9290, 16.0010



123.0930, 4.1720, 1.4840



0.0000, 0.0000, 0.0000



128.0000, -0.0000, -0.0000

Same Dimension

The Same Dimension uses a secret algorithm to generate beautiful new colors.



211.3830, 18.1550, 6.8830



226.4870, 23.7940, 9.3140



219.4870, 14.6260, -0.7500



109.2890, 6.5560, 2.3320



54.8030, 105.9500, 40.2380



16.3740, 31.5420, 12.0700

Inverse Universe

The Inverse Universe completely reimagines the original color for something new.



211.3830, 18.1550, 6.8830



226.4870, 23.7940, 9.3140



215.5130, -14.6260, 0.7500



109.2890, 6.5560, 2.3320



54.8030, 105.9500, 40.2380



16.3740, 31.5420, 12.0700

Previews

White Background



This preview shows how the YIQ color 211.3830, 18.1550, 6.8830 looks on a white background.

Color Contrast Check

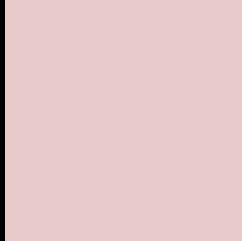
Large Text (above 18pt) WCAG AA × Fail

Any Text WCAG AA × Fail

Large Text (above 18pt) WCAG AAA × Fail

Any Text WCAG AAA × Fail

Black Background



This preview shows how the YIQ color 211.3830, 18.1550, 6.8830 looks on a black background.

Color Contrast Check

Large Text (above 18pt) WCAG AA ✓ Pass

Any Text WCAG AA ✓ Pass

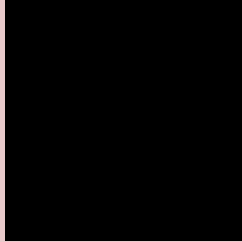
Large Text (above 18pt) WCAG AAA ✓ Pass

Any Text WCAG AAA ✓ Pass

If you want to check with other color combinations, try the [Color Contrast Checker](#).

YIQ 211.3830, 18.1550, 6.8830

Background



This preview shows how black text looks on a background with the YIQ color 211.3830, 18.1550, 6.8830.



This preview shows how white text looks on a background with the YIQ color 211.3830, 18.1550,

6.8830.

Color Blindness Simulation

Color vision deficiency is a very complex topic, and I could not describe the different causes any better than Wikipedia does, so if you want to learn more, you should check out their [article about color blindness](#).

Dichromacy



Original Color

211.3830, 18.1550, 6.8830

Protanopia

209.6800, 3.8970, 0.9610

Deuteranopia

211.0840, 17.5590, 6.6710



Tritanopia

212.2890, 15.7240, 12.3960

Trichromacy



Original Color

211.3830, 18.1550, 6.8830

Protanomaly

210.4850, 8.9400, 3.1800

Deuteranomaly

211.0840, 17.5590, 6.6710

Tritanomaly

212.0070, 16.4580, 10.1060

Monochromacy



Original Color

211.3830, 18.1550, 6.8830

Achromatopsia

211.0000, 0.0000, -0.0000

Achromatomaly

211.2890, 6.5560, 2.3320

CSS Examples

Text

The CSS property to change the color of the text to YIQ 211.3830, 18.1550, 6.8830 is called "color". The color property can be set on classes, ids or directly on the HTML element.

This example shows how text in the color `rgb(233, 202, 203)` looks like.

```
.text, #text, p{  
    color:rgb(233, 202, 203)  
}
```

If you want to add a text shadow in that color use the text-shadow property, you can generate a text shadow directly with our [CSS Text Shadow Generator](#).

Here you see how black text with a 4 pixel rgb(233, 202, 203) colored shadow looks like.

```
.shadow{ text-shadow: 4px 4px 2px rgb(233, 202, 203) }
```

Border

The CSS property to change the border of an element to YIQ 211.3830, 18.1550, 6.8830 is called "border". The border property can be set on classes, ids or directly on the HTML element.

This example shows the color as border, it can be applied via the CSS property "border" or "border-color".

```
.border, #border, table{ border:4px solid rgb(233, 202, 203) }
```


If only the border color should be changed use the property `border-color`.

```
.border{ border-color:rgb(233, 202, 203) }
```

If you want to add a box shadow in that color use:

Here you see how a box with a 4 pixel `rgb(233, 202, 203)` colored shadow looks like.

```
.boxshadow{ -moz-box-shadow:4px 4px 4px  
4px rgb(233, 202, 203); -webkit-box-  
shadow:4px 4px 4px 4px rgb(233, 202, 203);  
box-shadow:4px 4px 4px 4px rgb(233, 202,  
203) }
```

Background

The CSS property to change the background color of an element to YIQ 211.3830, 18.1550, 6.8830 is called "background". The background property can be set on classes, ids or directly on the HTML element.

```
.background, #background, body{  
background: rgb(233, 202, 203) }
```

If only the background color should be changed can be used:

```
.background{ background-color: rgb(233,  
202, 203) }
```

This example shows the color as background, it is applied via the CSS property "background".

To optimize and compress your CSS code, you can use our [online CSS compressor and optimizer](#) based on csstidy. If you want to create a linear or radial gradient as background or border, check our [CSS Gradient Generator](#).

Hey! You found this booklet interesting? Support Converting Colors with the new Membership Option!

The pro membership hides all ads, plus gives you double the colors in the color bucket, and more awesome pro features!

[Learn more, Memberships starting at \\$2.50/m!](#)

**Follow me
on Twitter!**

@ConvertingColor