

Converting Colors

YIQ(211.6110, 17.5130, 7.5050)

Have a look what the booklet for
YIQ(211.6110, 17.5130, 7.5050)
contains.

YIQ(211.6110, 17.5130, 7.5050)	3
<i>Conversions</i>	4
<i>Details</i>	6
<i>Harmonies</i>	12
<i>Previews</i>	24
<i>Color Blindness Simulation</i>	28
<i>CSS Examples</i>	31

Color

**YIQ(211.6110, 17.5130,
7.5050)**

Conversions

Conversions Part 1

Format	Color
Hex	E9CACD
RGB	233, 202, 205
RGB Percent	91%, 79%, 80%
CMY	0.0862, 0.2079, 0.1960
CMYK	0.00, 0.13, 0.12, 0.09
HSL	354°, 41%, 85%
HSV	354°, 13%, 91%
XYZ	65.7496, 63.9704, 66.6506
YIQ	211.6110, 17.5130, 7.5050

Conversions

Conversions Part 2

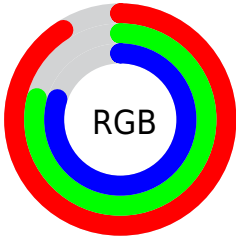
Format	Color
R _Y B	233, 202, 205
Decimal	15321805
CIE Lab	83.95, 11.38, 2.51
CIE LCh	84, 11.656, 12.448
Yxy	63.9704, 0.3348, 0.3258
Android (android.graphics.Color)	4293511885 (0xFFE9CACD)
YUV	211.6110, -3.2592, 18.7582
Hunter-Lab	79.9815, 6.7699, 6.5792

Details

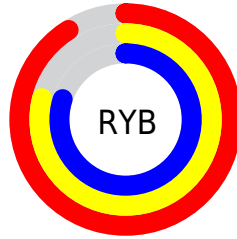
The YIQ color **211.6110, 17.5130, 7.5050** is a light color, and the websafe version is hex **FFCCCC**. A complement of this color would be **223.3890, -17.5130, -7.5050**, and the grayscale version is **212.0000, -0.0000, -0.0000**.

A 20% lighter version of the original color is **255.0000, -0.0000, -0.0000**, and **157.0130, 16.3210, 7.0810** is the 20% darker color. If you saturate the color by 10%, you get **195.7160, 30.5790, 13.0030**, and if you desaturate by 10%, it is **227.5060, 4.4470, 2.0070**.

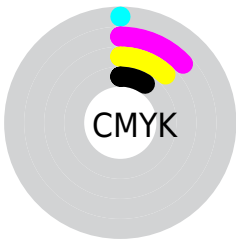
Distribution



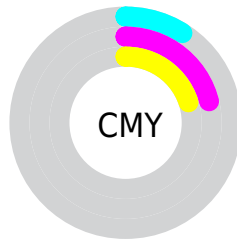
- Red (91%)
- Green (79%)
- Blue (80%)



- Red (91%)
- Yellow (79%)
- Blue (80%)



- Cyan (0%)
- Magenta (13%)
- Yellow (12%)
- Black (9%)





- Cyan (9%)
- Magenta (21%)
- Yellow (20%)

Brightness & Saturation Gradients


These gradients show how the YIQ color 211.6110, 17.5130, 7.5050 changes by changing the brightness by 10 percent. The first figure shows a shift by +10% for each color and the second figure -10%.


Similar to the brightness gradients but the following saturation gradients show a change of the YIQ color 211.6110, 17.5130, 7.5050 by changing the saturation by 10% instead.


 211.6110, 17.5130,
7.5050


 211.6110, 17.5130,
7.5050


255.0000, -0.0000,
-0.0000


 184.3120, 16.9170,
7.2930

 157.0130, 16.3210,
7.0810

 130.7140, 15.7250,
6.8690

 105.4150, 15.1290,
6.6570

 81.1160, 14.5330,
6.4450

 58.5180, 13.3410,
6.0210

 36.2190, 12.7450,

5.8090

■ 13.5290, 14.8080,
6.9680

■ 0.0000, 0.0000,
0.0000

■ 211.6110, 17.5130,
7.5050

■ 211.6110, 17.5130,
7.5050

■ 195.7160, 30.5790,
13.0030

■ 227.5060, 4.4470,
2.0070

■ 179.2340, 43.9200,
19.0240

■ 243.9880, -8.8940,
-4.0140

■ 163.3390, 56.9860,
24.5220

■ 248.4220,
-13.1120, -4.6640

■ 147.4440, 70.0520,
30.0200

■ 130.9620, 83.3930,
36.0410

■ 115.0670, 96.4590,
41.5390

■ 99.1720, 109.5250,
47.0370

■ 83.2770, 122.5910,
52.5350

■ 72.2890, 131.4850,
56.5490

Harmonies

Analogous

The Analogous color harmony consists of three colors that are next to each other on the color wheel.



211.9570, 10.7270, 9.3430



211.6110, 17.5130, 7.5050



210.7590, 19.8520, 3.6600

Triad

The Triadic color harmony groups three colors that are evenly spaced from another and form a triangle on the color wheel.



211.6110, 17.5130, 7.5050



207.1320, -0.7320, -8.7640



207.7730, -18.2940, 1.1460

Complementary

The Complementary color scheme is a pair of colors which are on the opposite of each other on the color wheel.



211.6110, 17.5130, 7.5050



223.3890, -17.5130, -7.5050

Split Complementary

Split-complementary colors differ from the complementary color scheme. The scheme consists of three colors, the original color and two neighbors of the complement color.



206.4580, -21.9610, -3.9850



211.6110, 17.5130, 7.5050



206.0430, -10.7270, -9.3430

Square

The Square scheme is like the rectangle color scheme, but the four colors are evenly spaced on the color wheel.



211.6110, 17.5130, 7.5050



208.6880, 9.4460, -5.9940



205.9050, -19.0260, -7.6180



210.0130, -10.0420, 5.7820

Rectangle

The Rectangle color scheme consists of four colors that form a rectangle on the color wheel.



211.6110, 17.5130, 7.5050



210.1670, 18.5230, 0.2110



205.9050, -19.0260, -7.6180



207.2350, -19.7150, -0.6350

Sweetspot

The Sweet Spot groups the original color and five complimentary colors.



211.6110, 17.5130, 7.5050



248.1040, 5.6390, 2.4310



213.9060, 6.7370, 15.5770



123.2070, 3.8510, 1.7950



0.0000, 0.0000, 0.0000



128.0000, -0.0000, -0.0000

Same Dimension

The Same Dimension uses a secret algorithm to generate beautiful new colors.



211.6110, 17.5130, 7.5050



226.7150, 23.1520, 9.9360



218.3130, 15.1760, 0.2960



109.4030, 6.2350, 2.6430



56.1710, 102.0980, 43.9700



16.7160, 30.5790, 13.0030

Inverse Universe

The Inverse Universe completely reimagines the original color for something new.



211.6110, 17.5130, 7.5050



226.7150, 23.1520, 9.9360



216.6870, -15.1760, -0.2960



109.4030, 6.2350, 2.6430



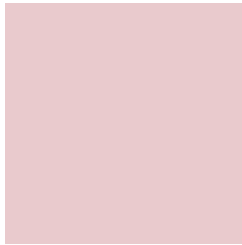
56.1710, 102.0980, 43.9700



16.7160, 30.5790, 13.0030

Previews

White Background



This preview shows how the YIQ color 211.6110, 17.5130, 7.5050 looks on a white background.

Color Contrast Check

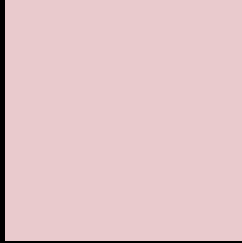
Large Text (above 18pt) WCAG AA × Fail

Any Text WCAG AA × Fail

Large Text (above 18pt) WCAG AAA × Fail

Any Text WCAG AAA × Fail

Black Background



This preview shows how the YIQ color 211.6110, 17.5130, 7.5050 looks on a black background.

Color Contrast Check

Large Text (above 18pt) WCAG AA ✓ Pass

Any Text WCAG AA ✓ Pass

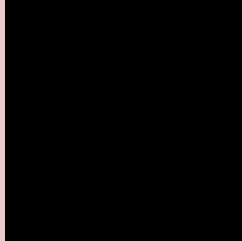
Large Text (above 18pt) WCAG AAA ✓ Pass

Any Text WCAG AAA ✓ Pass

If you want to check with other color combinations, try the [Color Contrast Checker](#).

YIQ 211.6110, 17.5130, 7.5050

Background



This preview shows how black text looks on a background with the YIQ color 211.6110, 17.5130, 7.5050.



This preview shows how white text looks on a background with the YIQ color 211.6110, 17.5130,

7.5050.

Color Blindness Simulation

Color vision deficiency is a very complex topic, and I could not describe the different causes any better than Wikipedia does, so if you want to learn more, you should check out their [article about color blindness](#).

Dichromacy



Original Color

211.6110, 17.5130, 7.5050

Protanopia

209.6090, 2.6590, 1.3710

Deuteranopia

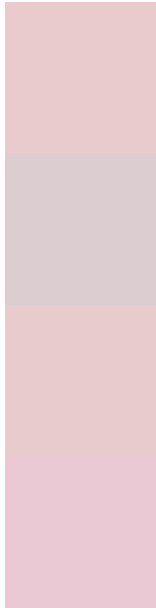
211.6000, 16.0460, 6.5580



Tritanopia

211.9900, 15.1280, 12.1840

Trichromacy



Original Color

211.6110, 17.5130, 7.5050

Protanomaly

210.4140, 7.7020, 3.5900

Deuteranomaly

211.8990, 16.6420, 6.7700

Tritanomaly

212.1210, 16.1370, 10.4170

Monochromacy



Original Color

211.6110, 17.5130, 7.5050

Achromatopsia

212.0000, -0.0000, -0.0000

Achromatomaly

211.7020, 6.8310, 2.8550

CSS Examples

Text

The CSS property to change the color of the text to YIQ 211.6110, 17.5130, 7.5050 is called "color". The color property can be set on classes, ids or directly on the HTML element.

This example shows how text in the color `rgb(233, 202, 205)` looks like.

```
.text, #text, p{  
    color:rgb(233, 202, 205)  
}
```

If you want to add a text shadow in that color use the text-shadow property, you can generate a text shadow directly with our [CSS Text Shadow Generator](#).

Here you see how black text with a 4 pixel rgb(233, 202, 205) colored shadow looks like.

```
.shadow{ text-shadow: 4px 4px 2px rgb(233, 202, 205) }
```

Border

The CSS property to change the border of an element to YIQ 211.6110, 17.5130, 7.5050 is called "border". The border property can be set on classes, ids or directly on the HTML element.

This example shows the color as border, it can be applied via the CSS property "border" or "border-color".

```
.border, #border, table{ border:4px solid rgb(233, 202, 205) }
```


If only the border color should be changed use the property `border-color`.

```
.border{ border-color:rgb(233, 202, 205) }
```

If you want to add a box shadow in that color use:

Here you see how a box with a 4 pixel `rgb(233, 202, 205)` colored shadow looks like.

```
.boxshadow{ -moz-box-shadow:4px 4px 4px  
4px rgb(233, 202, 205); -webkit-box-  
shadow:4px 4px 4px 4px rgb(233, 202, 205);  
box-shadow:4px 4px 4px 4px rgb(233, 202,  
205) }
```

Background

The CSS property to change the background color of an element to YIQ 211.6110, 17.5130, 7.5050 is called "background". The background property can be set on classes, ids or directly on the HTML element.

```
.background, #background, body{  
background: rgb(233, 202, 205) }
```

If only the background color should be changed can be used:

```
.background{ background-color: rgb(233,  
202, 205) }
```

This example shows the color as background, it is applied via the CSS property "background".

To optimize and compress your CSS code, you can use our [online CSS compressor and optimizer](#) based on csstidy. If you want to create a linear or radial gradient as background or border, check our [CSS Gradient Generator](#).

Hey! You found this booklet interesting? Support Converting Colors with the new Membership Option!

The pro membership hides all ads, plus gives you double the colors in the color bucket, and more awesome pro features!

[Learn more, Memberships starting at \\$2.50/m!](#)

**Follow me
on Twitter!**

@ConvertingColor