

Converting Colors

YIQ(211.8230, 13.8000, 3.2080)

Have a look what the booklet for
YIQ(211.8230, 13.8000, 3.2080)
contains.

YIQ(211.8230, 13.8000, 3.2080)	3
<i>Conversions</i>	4
<i>Details</i>	6
<i>Harmonies</i>	12
<i>Previews</i>	24
<i>Color Blindness Simulation</i>	28
<i>CSS Examples</i>	31

Color

**YIQ(211.8230, 13.8000,
3.2080)**

Conversions

Conversions Part 1

Format	Color
Hex	E3CECA
RGB	227, 206, 202
RGB Percent	89%, 81%, 79%
CMY	0.1098, 0.1922, 0.2078
CMYK	0.00, 0.09, 0.11, 0.11
HSL	10°, 31%, 84%
HSV	10°, 11%, 89%
XYZ	64.4140, 64.7362, 64.9866
YIQ	211.8230, 13.8000, 3.2080

Conversions

Conversions Part 2

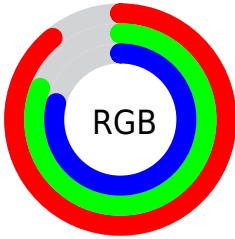
Format	Color
R _Y B	227, 207, 202
Decimal	14929610
CIE Lab	84.35, 6.66, 4.62
CIE LCh	84, 8.103, 34.782
Yxy	64.7362, 0.3318, 0.3335
Android (android.graphics.Color)	4293119690 (0xFFE3CECA)
YUV	211.8230, -4.8427, 13.3102
Hunter-Lab	80.4588, 2.1012, 8.4326

Details

The YIQ color **211.8230, 13.8000, 3.2080** is a light color, and the websafe version is hex **CCCCCC**. A complement of this color would be **217.1770, -13.8000, -3.2080**, and the grayscale version is **212.0000, -0.0000, -0.0000**.

A 20% lighter version of the original color is **255.0000, -0.0000, -0.0000**, and **157.2250, 12.6080, 2.7840** is the 20% darker color. If you saturate the color by 10%, you get **198.0480, 26.4080, 5.9920**, and if you desaturate by 10%, it is **225.5980, 1.1920, 0.4240**.

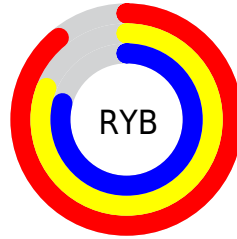
Distribution



Red (89%)

Green (81%)

Blue (79%)



Red (89%)

Yellow (81%)

Blue (79%)

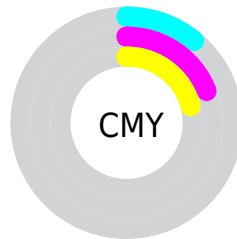


Cyan (0%)

Magenta (9%)

Yellow (11%)

Black (11%)



Cyan (11%)

Magenta (19%)

Yellow (21%)

Brightness & Saturation Gradients

These gradients show how the YIQ color 211.8230, 13.8000, 3.2080 changes by changing the brightness by 10 percent. The first figure shows a shift by +10% for each color and the second figure -10%.

Similar to the brightness gradients but the following saturation gradients show a change of the YIQ color 211.8230, 13.8000, 3.2080 by changing the saturation by 10% instead.

■ 211.8230, 13.8000,
3.2080

■ 211.8230, 13.8000,
3.2080

255.0000, -0.0000,
-0.0000

■ 183.9370, 13.4790,
3.5190

■ 157.5240, 13.2040,
2.9960

■ 131.2250, 12.6080,
2.7840

■ 105.9260, 12.0120,
2.5720

■ 81.7410, 11.0950,
2.6710

■ 58.4420, 10.4990,
2.4590

■ 37.1430, 9.9030,

2.2470

■ 14.8120, 12.3330,
2.2610

■ 0.0000, 0.0000,
0.0000

■ 211.8230, 13.8000,
3.2080

■ 211.8230, 13.8000,
3.2080

■ 198.0480, 26.4080,
5.9920

■ 225.5980, 1.1920,
0.4240

■ 184.3870, 38.6950,
9.0870

■ 239.2590,
-11.0950, -2.6710

■ 170.6120, 51.3030,
11.8710

■ 246.6280,
-16.6880, -5.9360

■ 156.8370, 63.9110,
14.6550

■ 143.1760, 76.1980,
17.7500

■ 128.8140, 89.0810,
21.0570

■ 115.0390,
101.6890, 23.8410

■ 101.2640,
114.2970, 26.6250

■ 89.0050, 125.3920,
29.2960

Harmonies

Analogous

The Analogous color harmony consists of three colors that are next to each other on the color wheel.



212.0340, 11.8280, 5.9080



211.8230, 13.8000, 3.2080



211.2310, 12.4710, -0.2410

Triad

The Triadic color harmony groups three colors that are evenly spaced from another and form a triangle on the color wheel.



211.8230, 13.8000, 3.2080



208.3750, -5.7300, -6.2900



210.5030, -8.6660, 2.8700

Complementary

The Complementary color scheme is a pair of colors which are on the opposite of each other on the color wheel.



211.8230, 13.8000, 3.2080



217.1770, -13.8000, -3.2080

Split Complementary

Split-complementary colors differ from the complementary color scheme. The scheme consists of three colors, the original color and two neighbors of the complement color.



209.1710, -13.6630, -0.1830



211.8230, 13.8000, 3.2080



207.9660, -11.8280, -5.9080

Square

The Square scheme is like the rectangle color scheme, but the four colors are evenly spaced on the color wheel.



211.8230, 13.8000, 3.2080



209.4960, 1.2390, -5.9370



208.5790, -14.9920, -3.6320



211.5040, -1.2390, 5.9370

Rectangle

The Rectangle color scheme consists of four colors that form a rectangle on the color wheel.



211.8230, 13.8000, 3.2080



210.0950, 9.8580, -2.4460



208.5790, -14.9920, -3.6320



209.6060, -10.4540, 2.2340

Sweetspot

The Sweet Spot groups the original color and five complimentary colors.



211.8230, 13.8000, 3.2080



250.5660, 4.2180, 0.6500



211.8690, 8.1590, 11.8310



124.3810, 3.3010, 0.7490



0.0000, 0.0000, 0.0000



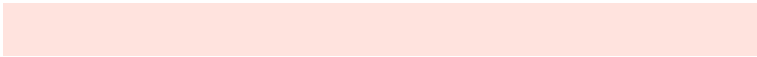
128.0000, -0.0000, -0.0000

Same Dimension

The Same Dimension uses a secret algorithm to generate beautiful new colors.



211.8230, 13.8000, 3.2080



234.8020, 18.2930, 4.3810



218.8670, 10.5000, -3.0680



107.7620, 6.6020, 1.4980



69.9570, 98.9840, 23.3040



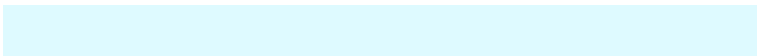
19.9450, 28.1960, 6.6280

Inverse Universe

The Inverse Universe completely reimagines the original color for something new.



217.1770, -13.8000, -3.2080



242.1980, -18.2930, -4.3810



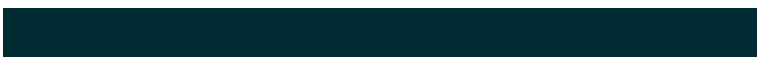
210.1330, -10.5000, 3.0680



110.2380, -6.6020, -1.4980



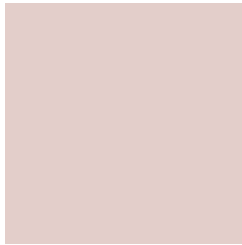
108.4560, -98.7090, -22.7810



31.0550, -28.1960, -6.6280

Previews

White Background



This preview shows how the YIQ color 211.8230, 13.8000, 3.2080 looks on a white background.

Color Contrast Check

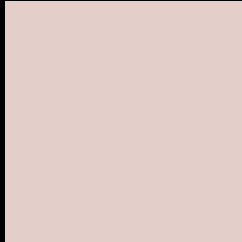
Large Text (above 18pt) WCAG AA × Fail

Any Text WCAG AA × Fail

Large Text (above 18pt) WCAG AAA × Fail

Any Text WCAG AAA × Fail

Black Background



This preview shows how the YIQ color 211.8230, 13.8000, 3.2080 looks on a black background.

Color Contrast Check

Large Text (above 18pt) WCAG AA ✓ Pass

Any Text WCAG AA ✓ Pass

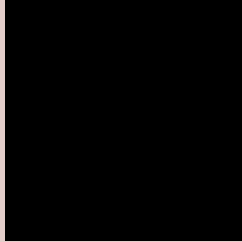
Large Text (above 18pt) WCAG AAA ✓ Pass

Any Text WCAG AAA ✓ Pass

If you want to check with other color combinations, try the [Color Contrast Checker](#).

YIQ 211.8230, 13.8000, 3.2080

Background



This preview shows how black text looks on a background with the YIQ color 211.8230, 13.8000, 3.2080.



This preview shows how white text looks on a background with the YIQ color 211.8230, 13.8000,

Color Blindness Simulation

Color vision deficiency is a very complex topic, and I could not describe the different causes any better than Wikipedia does, so if you want to learn more, you should check out their [article about color blindness](#).

Dichromacy



Original Color

211.8230, 13.8000, 3.2080

Protanopia

211.1100, 5.5020, -0.5940

Deuteranopia

212.2690, 18.4760, 6.5720



Tritanopia

212.5980, 10.3600, 10.4880

Trichromacy



Original Color

211.8230, 13.8000, 3.2080

Protanomaly

211.6050, 8.4820, 0.4660

Deuteranomaly

211.9590, 16.4130, 5.4130

Tritanomaly

212.2020, 11.4150, 7.8870

Monochromacy



Original Color

211.8230, 13.8000, 3.2080

Achromatopsia

212.0000, -0.0000, -0.0000

Achromatomaly

211.8650, 4.8140, 0.8620

CSS Examples

Text

The CSS property to change the color of the text to YIQ 211.8230, 13.8000, 3.2080 is called "color". The color property can be set on classes, ids or directly on the HTML element.

This example shows how text in the color `rgb(227, 206, 202)` looks like.

```
.text, #text, p{  
    color:rgb(227, 206, 202)  
}
```

If you want to add a text shadow in that color use the text-shadow property, you can generate a text shadow directly with our [CSS Text Shadow Generator](#).

Here you see how black text with a 4 pixel rgb(227, 206, 202) colored shadow looks like.

```
.shadow{ text-shadow: 4px 4px 2px rgb(227, 206, 202) }
```

Border

The CSS property to change the border of an element to YIQ 211.8230, 13.8000, 3.2080 is called "border". The border property can be set on classes, ids or directly on the HTML element.

This example shows the color as border, it can be applied via the CSS property "border" or "border-color".

```
.border, #border, table{ border:4px solid rgb(227, 206, 202) }
```


If only the border color should be changed use the property `border-color`.

```
.border{ border-color:rgb(227, 206, 202) }
```

If you want to add a box shadow in that color use:

Here you see how a box with a 4 pixel `rgb(227, 206, 202)` colored shadow looks like.

```
.boxshadow{ -moz-box-shadow:4px 4px 4px 4px rgb(227, 206, 202); -webkit-box-shadow:4px 4px 4px 4px rgb(227, 206, 202); box-shadow:4px 4px 4px 4px rgb(227, 206, 202) }
```

Background

The CSS property to change the background color of an element to YIQ 211.8230, 13.8000, 3.2080 is called "background". The background property can be set on classes, ids or directly on the HTML element.

```
.background, #background, body{  
background: rgb(227, 206, 202) }
```

If only the background color should be changed can be used:

```
.background{ background-color: rgb(227,  
206, 202) }
```

This example shows the color as background, it is applied via the CSS property "background".

To optimize and compress your CSS code, you can use our [online CSS compressor and optimizer](#) based on csstidy. If you want to create a linear or radial gradient as background or border, check our [CSS Gradient Generator](#).

Hey! You found this booklet interesting? Support Converting Colors with the new Membership Option!

The pro membership hides all ads, plus gives you double the colors in the color bucket, and more awesome pro features!

[Learn more, Memberships starting at \\$2.50/m!](#)

**Follow me
on Twitter!**

@ConvertingColor