

Converting Colors

YIQ(212.2790, 12.5160, 4.4520)

Have a look what the booklet for
YIQ(212.2790, 12.5160, 4.4520)
contains.

YIQ(212.2790, 12.5160, 4.4520)	3
<i>Conversions</i>	4
<i>Details</i>	6
<i>Harmonies</i>	12
<i>Previews</i>	24
<i>Color Blindness Simulation</i>	28
<i>CSS Examples</i>	31

Color

**YIQ(212.2790, 12.5160,
4.4520)**

Conversions

Conversions Part 1

Format	Color
Hex	E3CECE
RGB	227, 206, 206
RGB Percent	89%, 81%, 81%
CMY	0.1097, 0.1922, 0.1921
CMYK	0.00, 0.09, 0.09, 0.11
HSL	360°, 27%, 85%
HSV	360°, 9%, 89%
XYZ	64.8939, 64.9282, 67.5127
YIQ	212.2790, 12.5160, 4.4520

Conversions

Conversions Part 2

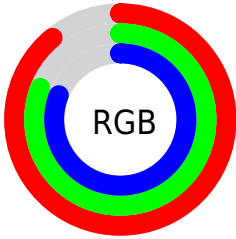
Format	Color
R _Y B	227, 206, 206
Decimal	14929614
CIE Lab	84.45, 7.32, 2.64
CIE LCh	84, 7.778, 19.836
Yxy	64.9282, 0.3289, 0.3290
Android (android.graphics.Color)	4293119694 (0xFFE3CECE)
YUV	212.2790, -3.0955, 12.9103
Hunter-Lab	80.5780, 2.7442, 6.7282

Details

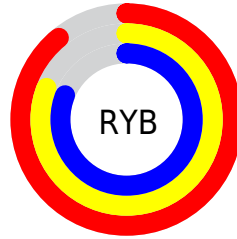
The YIQ color **212.2790, 12.5160, 4.4520** is a light color, and the websafe version is hex **CCCCCC**. A complement of this color would be **220.7210, -12.5160, -4.4520**, and the grayscale version is **212.0000, -0.0000, -0.0000**.

A 20% lighter version of the original color is **255.0000, -0.0000, -0.0000**, and **157.9800, 11.9200, 4.2400** is the 20% darker color. If you saturate the color by 10%, you get **196.1560, 26.2240, 9.3280**, and if you desaturate by 10%, it is **228.4020, -1.1920, -0.4240**.

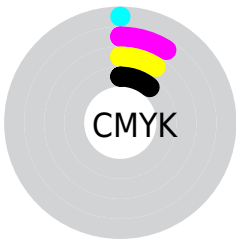
Distribution



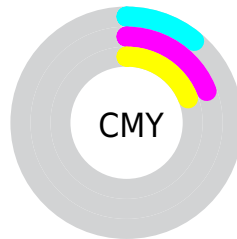
- Red (89%)
- Green (81%)
- Blue (81%)



- Red (89%)
- Yellow (81%)
- Blue (81%)



- Cyan (0%)
- Magenta (9%)
- Yellow (9%)
- Black (11%)



- Cyan (11%)
- Magenta (19%)
- Yellow (19%)

Brightness & Saturation Gradients

These gradients show how the YIQ color 212.2790, 12.5160, 4.4520 changes by changing the brightness by 10 percent. The first figure shows a shift by +10% for each color and the second figure -10%.

Similar to the brightness gradients but the following saturation gradients show a change of the YIQ color 212.2790, 12.5160, 4.4520 by changing the saturation by 10% instead.

■ 212.2790, 12.5160,
4.4520

■ 212.2790, 12.5160,
4.4520

255.0000, -0.0000,
-0.0000

■ 184.3930, 12.1950,
4.7630

■ 157.9800, 11.9200,
4.2400

■ 131.6810, 11.3240,
4.0280

■ 106.3820, 10.7280,
3.8160

■ 82.0830, 10.1320,
3.6040

■ 58.7840, 9.5360,
3.3920

■ 37.4850, 8.9400,

3.1800

■ 15.3820, 10.7280,
3.8160

■ 0.0000, 0.0000,
0.0000

■ 212.2790, 12.5160,
4.4520

■ 212.2790, 12.5160,
4.4520

■ 196.1560, 26.2240,
9.3280

■ 228.4020, -1.1920,
-0.4240

■ 180.7340, 39.3360,
13.9920

■ 243.8240,
-14.3040, -5.0880

■ 164.6110, 53.0440,
18.8680

■ 246.6280,
-16.6880, -5.9360

■ 148.4880, 66.7520,
23.7440

■ 132.4790, 80.1390,
28.9310

■ 116.9430, 93.5720,
33.2840

■ 100.8200,
107.2800, 38.1600

■ 84.8110, 120.6670,
43.3470

■ 69.2750, 134.1000,
47.7000

Harmonies

Analogous

The Analogous color harmony consists of three colors that are next to each other on the color wheel.



212.2940, 8.1600, 6.3040



212.2790, 12.5160, 4.4520



211.5840, 12.9750, 1.6390

Triad

The Triadic color harmony groups three colors that are evenly spaced from another and form a triangle on the color wheel.



212.2790, 12.5160, 4.4520



209.2290, -2.3830, -6.3750



210.1930, -10.7290, 1.7110

Complementary

The Complementary color scheme is a pair of colors which are on the opposite of each other on the color wheel.



212.2790, 12.5160, 4.4520



220.7210, -12.5160, -4.4520

Split Complementary

Split-complementary colors differ from the complementary color scheme. The scheme consists of three colors, the original color and two neighbors of the complement color.



209.2310, -13.8920, -1.5400



212.2790, 12.5160, 4.4520



208.5210, -9.0770, -6.2050

Square

The Square scheme is like the rectangle color scheme, but the four colors are evenly spaced on the color wheel.



212.2790, 12.5160, 4.4520



210.2900, 4.8150, -4.6650



208.4220, -13.1120, -4.6640



211.2970, -5.0900, 4.1420

Rectangle

The Rectangle color scheme consists of four colors that form a rectangle on the color wheel.



212.2790, 12.5160, 4.4520



211.5190, 11.6000, -0.9760



208.4220, -13.1120, -4.6640



209.7690, -12.4710, 0.2410

Sweetspot

The Sweet Spot groups the original color and five complimentary colors.



212.2790, 12.5160, 4.4520



249.3920, 4.7680, 1.6960



214.6730, 5.7750, 10.9830



123.7940, 3.5760, 1.2720



0.0000, 0.0000, 0.0000



128.0000, -0.0000, -0.0000

Same Dimension

The Same Dimension uses a secret algorithm to generate beautiful new colors.



212.2790, 12.5160, 4.4520



235.3720, 16.6880, 5.9360



218.1490, 9.7660, -0.7780



106.5880, 7.1520, 2.5440



53.5210, 106.6840, 37.9480



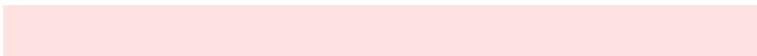
15.2490, 30.3960, 10.8120

Inverse Universe

The Inverse Universe completely reimagines the original color for something new.



212.2790, 12.5160, 4.4520



235.3720, 16.6880, 5.9360



214.8510, -9.7660, 0.7780



106.5880, 7.1520, 2.5440



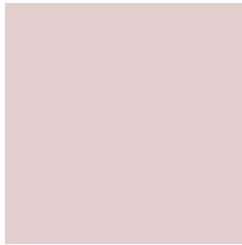
53.5210, 106.6840, 37.9480



15.2490, 30.3960, 10.8120

Previews

White Background



This preview shows how the YIQ color 212.2790, 12.5160, 4.4520 looks on a white background.

Color Contrast Check

Large Text (above 18pt) WCAG AA × Fail

Any Text WCAG AA × Fail

Large Text (above 18pt) WCAG AAA × Fail

Any Text WCAG AAA × Fail

Black Background



This preview shows how the YIQ color 212.2790, 12.5160, 4.4520 looks on a black background.

Color Contrast Check

Large Text (above 18pt) WCAG AA ✓ Pass

Any Text WCAG AA ✓ Pass

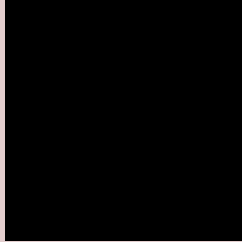
Large Text (above 18pt) WCAG AAA ✓ Pass

Any Text WCAG AAA ✓ Pass

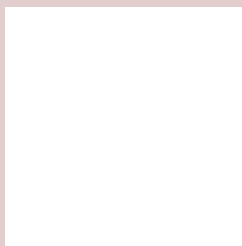
If you want to check with other color combinations, try the [Color Contrast Checker](#).

YIQ 212.2790, 12.5160, 4.4520

Background



This preview shows how black text looks on a background with the YIQ color 212.2790, 12.5160, 4.4520.



This preview shows how white text looks on a background with the YIQ color 212.2790, 12.5160,

4.4520.

Color Blindness Simulation

Color vision deficiency is a very complex topic, and I could not describe the different causes any better than Wikipedia does, so if you want to learn more, you should check out their [article about color blindness](#).

Dichromacy



Original Color

212.2790, 12.5160, 4.4520

Protanopia

211.2670, 3.6220, 0.4380

Deuteranopia

212.8990, 16.6420, 6.7700



Tritanopia

213.2990, 9.7640, 10.2760

Trichromacy



Original Color

212.2790, 12.5160, 4.4520

Protanomaly

211.7620, 6.6020, 1.4980

Deuteranomaly

212.8880, 15.1750, 5.8230

Tritanomaly

213.0170, 10.4980, 7.9860

Monochromacy



Original Color

212.2790, 12.5160, 4.4520

Achromatopsia

212.0000, -0.0000, -0.0000

Achromatomaly

212.0930, 4.1720, 1.4840

CSS Examples

Text

The CSS property to change the color of the text to YIQ 212.2790, 12.5160, 4.4520 is called "color". The color property can be set on classes, ids or directly on the HTML element.

This example shows how text in the color `rgb(227, 206, 206)` looks like.

```
.text, #text, p{  
    color:rgb(227, 206, 206)  
}
```

If you want to add a text shadow in that color use the text-shadow property, you can generate a text shadow directly with our [CSS Text Shadow Generator](#).

Here you see how black text with a 4 pixel rgb(227, 206, 206) colored shadow looks like.

```
.shadow{ text-shadow: 4px 4px 2px rgb(227, 206, 206) }
```

Border

The CSS property to change the border of an element to YIQ 212.2790, 12.5160, 4.4520 is called "border". The border property can be set on classes, ids or directly on the HTML element.

This example shows the color as border, it can be applied via the CSS property "border" or "border-color".

```
.border, #border, table{ border:4px solid rgb(227, 206, 206) }
```


If only the border color should be changed use the property `border-color`.

```
.border{ border-color:rgb(227, 206, 206) }
```

If you want to add a box shadow in that color use:

Here you see how a box with a 4 pixel `rgb(227, 206, 206)` colored shadow looks like.

```
.boxshadow{ -moz-box-shadow:4px 4px 4px  
4px rgb(227, 206, 206); -webkit-box-  
shadow:4px 4px 4px 4px rgb(227, 206, 206);  
box-shadow:4px 4px 4px 4px rgb(227, 206,  
206) }
```

Background

The CSS property to change the background color of an element to YIQ 212.2790, 12.5160, 4.4520 is called "background". The background property can be set on classes, ids or directly on the HTML element.

```
.background, #background, body{  
background: rgb(227, 206, 206) }
```

If only the background color should be changed can be used:

```
.background{ background-color: rgb(227,  
206, 206) }
```

This example shows the color as background, it is applied via the CSS property "background".

To optimize and compress your CSS code, you can use our [online CSS compressor and optimizer](#) based on csstidy. If you want to create a linear or radial gradient as background or border, check our [CSS Gradient Generator](#).

Hey! You found this booklet interesting? Support Converting Colors with the new Membership Option!

The pro membership hides all ads, plus gives you double the colors in the color bucket, and more awesome pro features!

[Learn more, Memberships starting at \\$2.50/m!](#)

**Follow me
on Twitter!**

@ConvertingColor