

Converting Colors

YIQ(212.7700, 21.3190, 4.6070)

Have a look what the booklet for
YIQ(212.7700, 21.3190, 4.6070)
contains.

YIQ(212.7700, 21.3190, 4.6070)	3
<i>Conversions</i>	4
<i>Details</i>	6
<i>Harmonies</i>	12
<i>Previews</i>	24
<i>Color Blindness Simulation</i>	28
<i>CSS Examples</i>	31

Color

**YIQ(212.7700, 21.3190,
4.6070)**

Conversions

Conversions Part 1

Format	Color
Hex	ECCCC5
RGB	236, 204, 197
RGB Percent	93%, 80%, 77%
CMY	0.0744, 0.2000, 0.2274
CMYK	0.00, 0.14, 0.17, 0.07
HSL	11°, 51%, 85%
HSV	11°, 17%, 93%
XYZ	66.2685, 65.0476, 61.8998
YIQ	212.7700, 21.3190, 4.6070

Conversions

Conversions Part 2

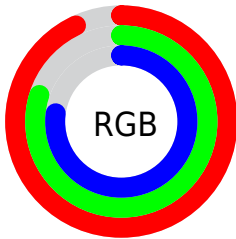
Format	Color
R _Y B	236, 206, 197
Decimal	15518917
CIE Lab	84.51, 10.14, 7.61
CIE LCh	85, 12.676, 36.890
Yxy	65.0476, 0.3430, 0.3367
Android (android.graphics.Color)	4293708997 (0xFFECCCC5)
YUV	212.7700, -7.7746, 20.3727
Hunter-Lab	80.6521, 5.5249, 10.9519

Details

The YIQ color $212.7700, 21.3190, 4.6070$ is a light color, and the websafe version is hex FFCCCC . A complement of this color would be $220.2300, -21.3190, -4.6070$, and the grayscale version is $213.0000, -0.0000, 0.0000$.

A 20% lighter version of the original color is $254.8860, 0.3210, -0.3110$, and $158.1720, 20.1270, 4.1830$ is the 20% darker color. If you saturate the color by 10%, you get $198.8810, 34.2480, 7.0800$, and if you desaturate by 10%, it is $226.6590, 8.3900, 2.1340$.

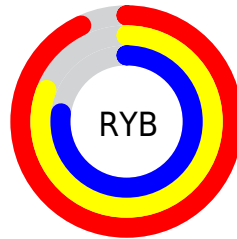
Distribution



Red (93%)

Green (80%)

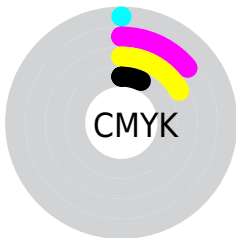
Blue (77%)



Red (93%)

Yellow (81%)

Blue (77%)

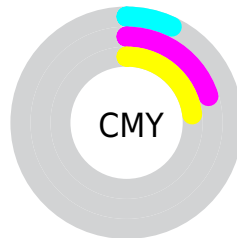


Cyan (0%)

Magenta (14%)

Yellow (17%)

Black (7%)



Cyan (7%)

Magenta (20%)

Yellow (23%)

Brightness & Saturation Gradients

These gradients show how the YIQ color 212.7700, 21.3190, 4.6070 changes by changing the brightness by 10 percent. The first figure shows a shift by +10% for each color and the second figure -10%.

Similar to the brightness gradients but the following saturation gradients show a change of the YIQ color 212.7700, 21.3190, 4.6070 by changing the saturation by 10% instead.

212.7700, 21.3190,
4.6070

212.7700, 21.3190,
4.6070

255.0000, -0.0000,
-0.0000

185.4710, 20.7230,
4.3950

254.8860, 0.3210,
-0.3110

158.1720, 20.1270,
4.1830

131.9870, 19.2100,
4.2820

106.6880, 18.6140,
4.0700

82.2040, 17.1010,
3.9570

58.9050, 16.5050,
3.7450

37.0080, 14.7170,

3.1090

■ 14.8620, 18.0640,
3.0240

■ 0.0000, 0.0000,
0.0000

■ 212.7700, 21.3190,
4.6070

■ 212.7700, 21.3190,
4.6070

■ 198.8810, 34.2480,
7.0800

■ 226.6590, 8.3900,
2.1340

■ 184.5190, 47.1310,
10.3870

■ 241.0210, -4.4930,
-1.1730

■ 170.6300, 60.0600,
12.8600

■ 249.3190,
-11.3240, -4.0280

■ 156.2680, 72.9430,
16.1670

■ 142.3790, 85.8720,
18.6400

■ 128.4900, 98.8010,
21.1130

■ 114.1280,
111.6840, 24.4200

■ 100.2390,
124.6130, 26.8930

■ 95.2180, 129.1060,
28.0660

Harmonies

Analogous

The Analogous color harmony consists of three colors that are next to each other on the color wheel.



213.4370, 18.0630, 8.5510



212.7700, 21.3190, 4.6070



211.5260, 18.8900, -0.9340

Triad

The Triadic color harmony groups three colors that are evenly spaced from another and form a triangle on the color wheel.



212.7700, 21.3190, 4.6070



207.4020, -10.3600, -10.4880



210.9310, -12.7470, 5.2450

Complementary

The Complementary color scheme is a pair of colors which are on the opposite of each other on the color wheel.



212.7700, 21.3190, 4.6070



220.2300, -21.3190, -4.6070

Split Complementary

Split-complementary colors differ from the complementary color scheme. The scheme consists of three colors, the original color and two neighbors of the complement color.



209.1640, -20.9530, -0.2250



212.7700, 21.3190, 4.6070



206.9650, -19.2550, -8.9750

Square

The Square scheme is like the rectangle color scheme, but the four colors are evenly spaced on the color wheel.



212.7700, 21.3190, 4.6070



209.0890, 0.8270, -9.4850



207.1480, -24.0240, -5.1440



212.6120, -1.4230, 9.2730

Rectangle

The Rectangle color scheme consists of four colors that form a rectangle on the color wheel.



212.7700, 21.3190, 4.6070



210.9660, 14.5350, -4.6090



207.1480, -24.0240, -5.1440



210.0230, -16.0020, 3.6620

Sweetspot

The Sweet Spot groups the original color and five complimentary colors.



212.7700, 21.3190, 4.6070



247.6480, 6.9230, 1.1870



212.4230, 12.6510, 18.5310



122.9790, 4.4930, 1.1730



0.0000, 0.0000, 0.0000



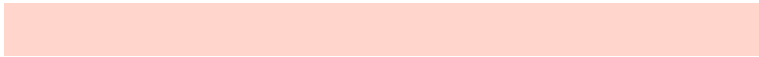
128.0000, -0.0000, -0.0000

Same Dimension

The Same Dimension uses a secret algorithm to generate beautiful new colors.



212.7700, 21.3190, 4.6070



224.5320, 27.9210, 6.1050



223.9230, 16.0940, -5.3300



110.4630, 6.0060, 1.2860



72.9030, 99.0760, 21.6360



22.0160, 29.4340, 6.2180

Inverse Universe

The Inverse Universe completely reimagines the original color for something new.



220.2300, -21.3190, -4.6070



234.4680, -27.9210, -6.1050



209.0770, -16.0940, 5.3300



112.5370, -6.0060, -1.2860



108.0970, -99.0760, -21.6360



31.9840, -29.4340, -6.2180

Previews

White Background



This preview shows how the YIQ color 212.7700, 21.3190, 4.6070 looks on a white background.

Color Contrast Check

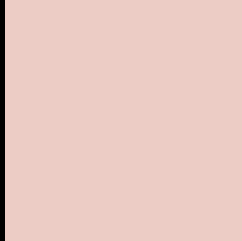
Large Text (above 18pt) WCAG AA × Fail

Any Text WCAG AA × Fail

Large Text (above 18pt) WCAG AAA × Fail

Any Text WCAG AAA × Fail

Black Background



This preview shows how the YIQ color 212.7700, 21.3190, 4.6070 looks on a black background.

Color Contrast Check

Large Text (above 18pt) WCAG AA ✓ Pass

Any Text WCAG AA ✓ Pass

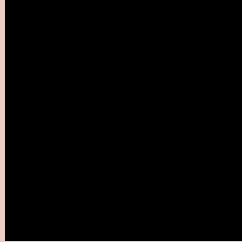
Large Text (above 18pt) WCAG AAA ✓ Pass

Any Text WCAG AAA ✓ Pass

If you want to check with other color combinations, try the [Color Contrast Checker](#).

YIQ 212.7700, 21.3190, 4.6070

Background



This preview shows how black text looks on a background with the YIQ color 212.7700, 21.3190, 4.6070.



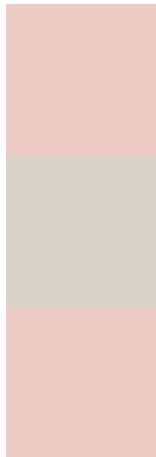
This preview shows how white text looks on a background with the YIQ color 212.7700, 21.3190,

4.6070.

Color Blindness Simulation

Color vision deficiency is a very complex topic, and I could not describe the different causes any better than Wikipedia does, so if you want to learn more, you should check out their [article about color blindness](#).

Dichromacy



Original Color

212.7700, 21.3190, 4.6070

Protanopia

210.9530, 7.3820, -1.6260

Deuteranopia

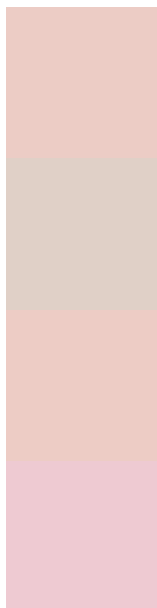
213.0690, 21.9150, 4.8190



Tritanopia

214.1860, 17.5120, 13.0320

Trichromacy



Original Color

212.7700, 21.3190, 4.6070

Protanomaly

211.7580, 12.4250, 0.5930

Deuteranomaly

213.0690, 21.9150, 4.8190

Tritanomaly

213.6760, 18.8880, 10.1200

Monochromacy



Original Color

212.7700, 21.3190, 4.6070

Achromatopsia

213.0000, -0.0000, 0.0000

Achromatomaly

212.9470, 7.5190, 1.3990

CSS Examples

Text

The CSS property to change the color of the text to YIQ 212.7700, 21.3190, 4.6070 is called "color". The color property can be set on classes, ids or directly on the HTML element.

This example shows how text in the color `rgb(236, 204, 197)` looks like.

```
.text, #text, p{  
    color:rgb(236, 204, 197)  
}
```

If you want to add a text shadow in that color use the text-shadow property, you can generate a text shadow directly with our [CSS Text Shadow Generator](#).

Here you see how black text with a 4 pixel rgb(236, 204, 197) colored shadow looks like.

```
.shadow{ text-shadow: 4px 4px 2px rgb(236, 204, 197) }
```

Border

The CSS property to change the border of an element to YIQ 212.7700, 21.3190, 4.6070 is called "border". The border property can be set on classes, ids or directly on the HTML element.

This example shows the color as border, it can be applied via the CSS property "border" or "border-color".

```
.border, #border, table{ border:4px solid rgb(236, 204, 197) }
```


If only the border color should be changed use the property `border-color`.

```
.border{ border-color:rgb(236, 204, 197) }
```

If you want to add a box shadow in that color use:

Here you see how a box with a 4 pixel `rgb(236, 204, 197)` colored shadow looks like.

```
.boxshadow{ -moz-box-shadow:4px 4px 4px  
4px rgb(236, 204, 197); -webkit-box-  
shadow:4px 4px 4px 4px rgb(236, 204, 197);  
box-shadow:4px 4px 4px 4px rgb(236, 204,  
197) }
```

Background

The CSS property to change the background color of an element to YIQ 212.7700, 21.3190, 4.6070 is called "background". The background property can be set on classes, ids or directly on the HTML element.

```
.background, #background, body{  
background: rgb(236, 204, 197) }
```

If only the background color should be changed can be used:

```
.background{ background-color: rgb(236,  
204, 197) }
```

This example shows the color as background, it is applied via the CSS property "background".

To optimize and compress your CSS code, you can use our [online CSS compressor and optimizer](#) based on csstidy. If you want to create a linear or radial gradient as background or border, check our [CSS Gradient Generator](#).

Hey! You found this booklet interesting? Support Converting Colors with the new Membership Option!

The pro membership hides all ads, plus gives you double the colors in the color bucket, and more awesome pro features!

[Learn more, Memberships starting at \\$2.50/m!](#)

**Follow me
on Twitter!**

@ConvertingColor