

Converting Colors

YIQ(212.8280, 15.4040, 7.1800)

Have a look what the booklet for
YIQ(212.8280, 15.4040, 7.1800)
contains.

YIQ(212.8280, 15.4040, 7.1800)	3
<i>Conversions</i>	4
<i>Details</i>	6
<i>Harmonies</i>	12
<i>Previews</i>	24
<i>Color Blindness Simulation</i>	28
<i>CSS Examples</i>	31

Color

**YIQ(212.8280, 15.4040,
7.1800)**

Conversions

Conversions Part 1

Format	Color
Hex	E8CCD0
RGB	232, 204, 208
RGB Percent	91%, 80%, 82%
CMY	0.0901, 0.2000, 0.1843
CMYK	0.00, 0.12, 0.10, 0.09
HSL	351°, 38%, 85%
HSV	351°, 12%, 91%
XYZ	66.2615, 64.8937, 68.7174
YIQ	212.8280, 15.4040, 7.1800

Conversions

Conversions Part 2

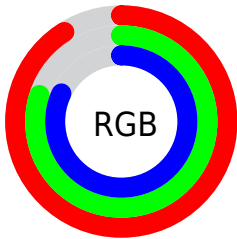
Format	Color
R _Y B	232, 204, 208
Decimal	15256784
CIE Lab	84.43, 10.46, 1.60
CIE LCh	84, 10.586, 8.694
Yxy	64.8937, 0.3315, 0.3247
Android (android.graphics.Color)	4293446864 (0xFFE8CCD0)
YUV	212.8280, -2.3802, 16.8138
Hunter-Lab	80.5566, 5.8503, 5.8133

Details

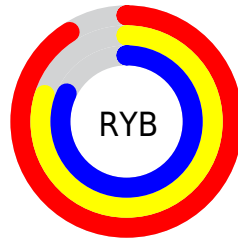
The YIQ color **212.8280, 15.4040, 7.1800** is a light color, and the websafe version is hex **FFCCCC**. A complement of this color would be **223.1720, -15.4040, -7.1800**, and the grayscale version is **213.0000, -0.0000, 0.0000**.

A 20% lighter version of the original color is **255.0000, -0.0000, -0.0000**, and **158.2300, 14.2120, 6.7560** is the 20% darker color. If you saturate the color by 10%, you get **197.0470, 28.1490, 12.9890**, and if you desaturate by 10%, it is **228.6090, 2.6590, 1.3710**.

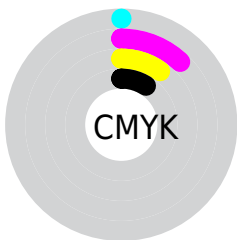
Distribution



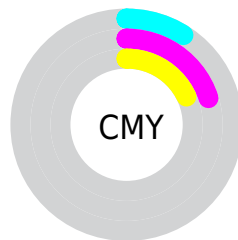
- Red (91%)
- Green (80%)
- Blue (82%)



- Red (91%)
- Yellow (80%)
- Blue (82%)



- Cyan (0%)
- Magenta (12%)
- Yellow (10%)
- Black (9%)



- Cyan (9%)
- Magenta (20%)
- Yellow (18%)

Brightness & Saturation Gradients

These gradients show how the YIQ color 212.8280, 15.4040, 7.1800 changes by changing the brightness by 10 percent. The first figure shows a shift by +10% for each color and the second figure -10%.

Similar to the brightness gradients but the following saturation gradients show a change of the YIQ color 212.8280, 15.4040, 7.1800 by changing the saturation by 10% instead.

212.8280, 15.4040,
7.1800

212.8280, 15.4040,
7.1800

255.0000, -0.0000,
-0.0000

185.4150, 15.1290,
6.6570

158.2300, 14.2120,
6.7560

131.9310, 13.6160,
6.5440

106.6320, 13.0200,
6.3320

82.3330, 12.4240,
6.1200

59.0340, 11.8280,
5.9080

37.4360, 10.6360,

5.4840

■ 15.4470, 12.1030,
6.4310

■ 0.0000, 0.0000,
0.0000

■ 212.8280, 15.4040,
7.1800

■ 212.8280, 15.4040,
7.1800

■ 197.0470, 28.1490,
12.9890

■ 228.6090, 2.6590,
1.3710

■ 181.2660, 40.8940,
18.7980

■ 244.3900,
-10.0860, -4.4380

■ 164.8980, 53.9140,
25.1300

■ 248.1230,
-13.7080, -4.8760

■ 149.2310, 66.3380,
31.2500

■ 133.4500, 79.0830,
37.0590

■ 117.6690, 91.8280,
42.8680

■ 101.8880,
104.5730, 48.6770

■ 85.5200, 117.5930,
55.0090

■ 73.1300, 127.6790,
59.4470

Harmonies

Analogous

The Analogous color harmony consists of three colors that are next to each other on the color wheel.



213.0600, 8.9390, 8.7070



212.8280, 15.4040, 7.1800



212.3890, 18.0180, 3.8580

Triad

The Triadic color harmony groups three colors that are evenly spaced from another and form a triangle on the color wheel.



212.8280, 15.4040, 7.1800



208.8440, 0.1390, -8.0290



209.4310, -17.3310, 0.2130

Complementary

The Complementary color scheme is a pair of colors which are on the opposite of each other on the color wheel.



212.8280, 15.4040, 7.1800



223.1720, -15.4040, -7.1800

Split Complementary

Split-complementary colors differ from the complementary color scheme. The scheme consists of three colors, the original color and two neighbors of the complement color.



208.1270, -19.5310, -3.9710



212.8280, 15.4040, 7.1800



207.9400, -8.9390, -8.7070

Square

The Square scheme is like the rectangle color scheme, but the four colors are evenly spaced on the color wheel.



212.8280, 15.4040, 7.1800



210.2150, 9.4000, -5.1600



207.5740, -16.5960, -7.6040



211.0730, -10.2710, 4.4250

Rectangle

The Rectangle color scheme consists of four colors that form a rectangle on the color wheel.



212.8280, 15.4040, 7.1800



211.7970, 16.6890, 0.4090



207.5740, -16.5960, -7.6040



208.8930, -18.7520, -1.5680

Sweetspot

The Sweet Spot groups the original color and five complimentary colors.



212.8280, 15.4040, 7.1800



248.1040, 5.6390, 2.4310



214.3680, 5.3160, 13.7960



123.2070, 3.8510, 1.7950



0.0000, 0.0000, 0.0000



128.0000, -0.0000, -0.0000

Same Dimension

The Same Dimension uses a secret algorithm to generate beautiful new colors.



212.8280, 15.4040, 7.1800



230.3340, 19.8510, 9.1870



218.2420, 13.9380, 0.7060



106.8160, 6.5100, 3.1660



56.4850, 98.3380, 46.0340



16.0470, 28.1490, 12.9890

Inverse Universe

The Inverse Universe completely reimagines the original color for something new.



212.8280, 15.4040, 7.1800



230.3340, 19.8510, 9.1870



217.7580, -13.9380, -0.7060



106.8160, 6.5100, 3.1660



56.4850, 98.3380, 46.0340



16.0470, 28.1490, 12.9890

Previews

White Background



This preview shows how the YIQ color 212.8280, 15.4040, 7.1800 looks on a white background.

Color Contrast Check

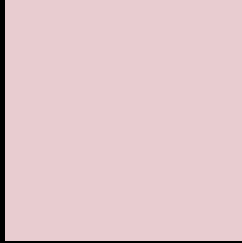
Large Text (above 18pt) WCAG AA × Fail

Any Text WCAG AA × Fail

Large Text (above 18pt) WCAG AAA × Fail

Any Text WCAG AAA × Fail

Black Background



This preview shows how the YIQ color 212.8280, 15.4040, 7.1800 looks on a black background.

Color Contrast Check

Large Text (above 18pt) WCAG AA ✓ Pass

Any Text WCAG AA ✓ Pass

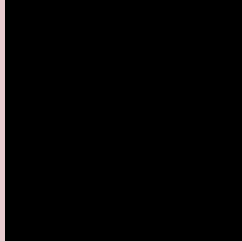
Large Text (above 18pt) WCAG AAA ✓ Pass

Any Text WCAG AAA ✓ Pass

If you want to check with other color combinations, try the [Color Contrast Checker](#).

YIQ 212.8280, 15.4040, 7.1800

Background



This preview shows how black text looks on a background with the YIQ color 212.8280, 15.4040, 7.1800.



This preview shows how white text looks on a background with the YIQ color 212.8280, 15.4040,

7.1800.

Color Blindness Simulation

Color vision deficiency is a very complex topic, and I could not describe the different causes any better than Wikipedia does, so if you want to learn more, you should check out their [article about color blindness](#).

Dichromacy



Original Color

212.8280, 15.4040, 7.1800

Protanopia

211.3100, 2.0630, 1.1590

Deuteranopia

212.8280, 15.4040, 7.1800



Tritanopia

213.0930, 13.3400, 11.5480

Trichromacy



Original Color

212.8280, 15.4040, 7.1800

Protanomaly

212.1150, 7.1060, 3.3780

Deuteranomaly

212.8280, 15.4040, 7.1800

Tritanomaly

213.2240, 14.3490, 9.7810

Monochromacy



Original Color

212.8280, 15.4040, 7.1800

Achromatopsia

213.0000, -0.0000, 0.0000

Achromatomaly

213.1040, 5.6390, 2.4310

CSS Examples

Text

The CSS property to change the color of the text to YIQ 212.8280, 15.4040, 7.1800 is called "color". The color property can be set on classes, ids or directly on the HTML element.

This example shows how text in the color `rgb(232, 204, 208)` looks like.

```
.text, #text, p{  
    color:rgb(232, 204, 208)  
}
```

If you want to add a text shadow in that color use the text-shadow property, you can generate a text shadow directly with our [CSS Text Shadow Generator](#).

Here you see how black text with a 4 pixel rgb(232, 204, 208) colored shadow looks like.

```
.shadow{ text-shadow: 4px 4px 2px rgb(232, 204, 208) }
```

Border

The CSS property to change the border of an element to YIQ 212.8280, 15.4040, 7.1800 is called "border". The border property can be set on classes, ids or directly on the HTML element.

This example shows the color as border, it can be applied via the CSS property "border" or "border-color".

```
.border, #border, table{ border:4px solid rgb(232, 204, 208) }
```


If only the border color should be changed use the property `border-color`.

```
.border{ border-color:rgb(232, 204, 208) }
```

If you want to add a box shadow in that color use:

Here you see how a box with a 4 pixel `rgb(232, 204, 208)` colored shadow looks like.

```
.boxshadow{ -moz-box-shadow:4px 4px 4px  
4px rgb(232, 204, 208); -webkit-box-  
shadow:4px 4px 4px 4px rgb(232, 204, 208);  
box-shadow:4px 4px 4px 4px rgb(232, 204,  
208) }
```

Background

The CSS property to change the background color of an element to YIQ 212.8280, 15.4040, 7.1800 is called "background". The background property can be set on classes, ids or directly on the HTML element.

```
.background, #background, body{  
background: rgb(232, 204, 208) }
```

If only the background color should be changed can be used:

```
.background{ background-color: rgb(232,  
204, 208) }
```

This example shows the color as background, it is applied via the CSS property "background".

To optimize and compress your CSS code, you can use our [online CSS compressor and optimizer](#) based on csstidy. If you want to create a linear or radial gradient as background or border, check our [CSS Gradient Generator](#).

Hey! You found this booklet interesting? Support Converting Colors with the new Membership Option!

The pro membership hides all ads, plus gives you double the colors in the color bucket, and more awesome pro features!

[Learn more, Memberships starting at \\$2.50/m!](#)

**Follow me
on Twitter!**

@ConvertingColor