

Converting Colors

YIQ(213.0960, 17.2850, 0.6210)

Have a look what the booklet for
YIQ(213.0960, 17.2850, 0.6210)
contains.

YIQ(213.0960, 17.2850, 0.6210)	3
<i>Conversions</i>	4
<i>Details</i>	6
<i>Harmonies</i>	12
<i>Previews</i>	24
<i>Color Blindness Simulation</i>	28
<i>CSS Examples</i>	31

Color

**YIQ(213.0960, 17.2850,
0.6210)**

Conversions

Conversions Part 1

Format	Color
Hex	E6D0C3
RGB	230, 208, 195
RGB Percent	90%, 82%, 76%
CMY	0.0980, 0.1843, 0.2352
CMYK	0.00, 0.10, 0.15, 0.10
HSL	22°, 41%, 83%
HSV	22°, 15%, 90%
XYZ	65.0430, 65.8731, 60.9283
YIQ	213.0960, 17.2850, 0.6210

Conversions

Conversions Part 2

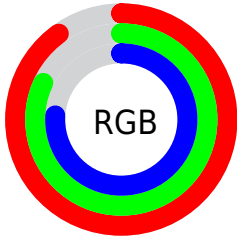
Format	Color
R _Y B	230, 216, 195
Decimal	15126723
CIE Lab	84.93, 5.56, 9.21
CIE LCh	85, 10.760, 58.869
Yxy	65.8731, 0.3390, 0.3434
Android (android.graphics.Color)	4293316803 (0xFFE6D0C3)
YUV	213.0960, -8.9213, 14.8248
Hunter-Lab	81.1623, 1.0149, 12.3047

Details

The YIQ color $213.0960, 17.2850, 0.6210$ is a light color, and the websafe version is hex `CCCCCC`. A complement of this color would be $211.9040, -17.2850, -0.6210$, and the grayscale version is $213.0000, -0.0000, 0.0000$.

A 20% lighter version of the original color is $254.6580, 0.9630, -0.9330$, and $158.4980, 16.0930, 0.1970$ is the 20% darker color. If you saturate the color by 10%, you get $202.2560, 28.5180, 0.7900$, and if you desaturate by 10%, it is $223.9360, 6.0520, 0.4520$.

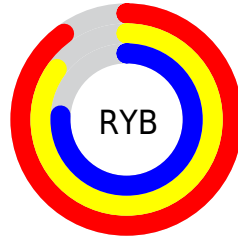
Distribution



Red (90%)

Green (82%)

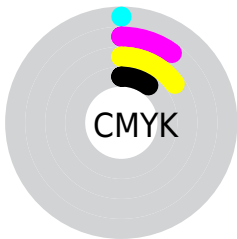
Blue (76%)



Red (90%)

Yellow (85%)

Blue (76%)

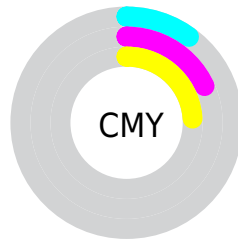


Cyan (0%)

Magenta (10%)

Yellow (15%)

Black (10%)



Cyan (10%)

Magenta (18%)

Yellow (24%)

Brightness & Saturation Gradients

These gradients show how the YIQ color 213.0960, 17.2850, 0.6210 changes by changing the brightness by 10 percent. The first figure shows a shift by +10% for each color and the second figure -10%.

Similar to the brightness gradients but the following saturation gradients show a change of the YIQ color 213.0960, 17.2850, 0.6210 by changing the saturation by 10% instead.

213.0960, 17.2850,
0.6210

213.0960, 17.2850,
0.6210

255.0000, -0.0000,
-0.0000

185.2100, 16.9640,
0.9320

254.6580, 0.9630,
-0.9330

158.4980, 16.0930,
0.1970

132.3130, 15.1760,
0.2960

107.0140, 14.5800,
0.0840

82.8290, 13.6630,
0.1830

59.6440, 12.7460,
0.2820

37.4590, 11.8290,

0.3810

■ 16.6010, 14.3050,
-0.4390

■ 0.0000, 0.0000,
0.0000

■ 213.0960, 17.2850,
0.6210

■ 213.0960, 17.2850,
0.6210

■ 202.2560, 28.5180,
0.7900

■ 223.9360, 6.0520,
0.4520

■ 190.8290, 40.0260,
1.4820

■ 235.3630, -5.4560,
-0.2400

■ 179.9890, 51.2590,
1.6510

■ 245.1770,
-13.8000, -3.2080

■ 168.5620, 62.7670,
2.3430

■ 247.5250,
-14.9000, -5.3000

■ 157.7220, 74.0000,
2.5120

■ 146.2950, 85.5080,
3.2040

■ 135.4550, 96.7410,
3.3730

■ 124.0280,
108.2490, 4.0650

■ 118.6650,
113.7050, 4.3050

Harmonies

Analogous

The Analogous color harmony consists of three colors that are next to each other on the color wheel.



214.0300, 17.6510, 5.0030



213.0960, 17.2850, 0.6210



211.8240, 12.0590, -3.7890

Triad

The Triadic color harmony groups three colors that are evenly spaced from another and form a triangle on the color wheel.



213.0960, 17.2850, 0.6210



208.8300, -14.4410, -8.1130



213.4760, -4.0360, 7.0680

Complementary

The Complementary color scheme is a pair of colors which are on the opposite of each other on the color wheel.



213.0960, 17.2850, 0.6210



211.9040, -17.2850, -0.6210

Split Complementary

Split-complementary colors differ from the complementary color scheme. The scheme consists of three colors, the original color and two neighbors of the complement color.



211.5780, -13.2510, 3.3650



213.0960, 17.2850, 0.6210



209.0730, -19.4390, -5.6390

Square

The Square scheme is like the rectangle color scheme, but the four colors are evenly spaced on the color wheel.



213.0960, 17.2850, 0.6210



209.4950, -6.1880, -9.0040



210.0070, -19.0730, -1.2570



214.2060, 5.5920, 8.7920

Rectangle

The Rectangle color scheme consists of four colors that form a rectangle on the color wheel.



213.0960, 17.2850, 0.6210



211.0190, 7.0160, -6.0080



210.0070, -19.0730, -1.2570



212.9810, -7.0160, 6.0080

Sweetspot

The Sweet Spot groups the original color and five complimentary colors.



213.0960, 17.2850, 0.6210



248.8220, 6.3730, 0.1410



207.9730, 13.7980, 14.2620



124.1530, 3.9430, 0.1270



0.0000, 0.0000, 0.0000



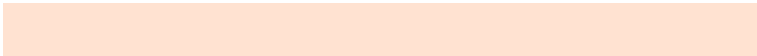
128.0000, -0.0000, -0.0000

Same Dimension

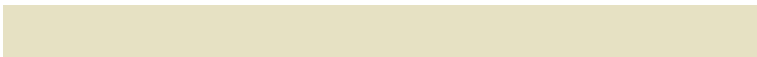
The Same Dimension uses a secret algorithm to generate beautiful new colors.



213.0960, 17.2850, 0.6210



232.7330, 22.7410, 0.8610



223.0750, 12.6100, -8.2700



109.5230, 5.7770, -0.0710



92.2630, 88.5340, 3.4300



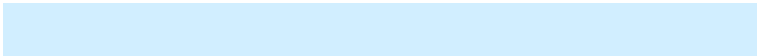
26.4020, 25.1710, 0.8750

Inverse Universe

The Inverse Universe completely reimagines the original color for something new.



211.9040, -17.2850, -0.6210



231.2670, -22.7410, -0.8610



201.9250, -12.6100, 8.2700



108.4770, -5.7770, 0.0710



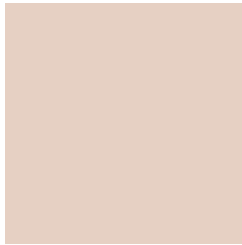
86.1500, -88.2590, -2.9070



24.5980, -25.1710, -0.8750

Previews

White Background



This preview shows how the YIQ color 213.0960, 17.2850, 0.6210 looks on a white background.

Color Contrast Check

Large Text (above 18pt) WCAG AA × Fail

Any Text WCAG AA × Fail

Large Text (above 18pt) WCAG AAA × Fail

Any Text WCAG AAA × Fail

Black Background



This preview shows how the YIQ color 213.0960, 17.2850, 0.6210 looks on a black background.

Color Contrast Check

Large Text (above 18pt) WCAG AA ✓ Pass

Any Text WCAG AA ✓ Pass

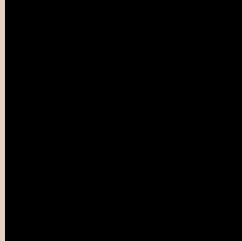
Large Text (above 18pt) WCAG AAA ✓ Pass

Any Text WCAG AAA ✓ Pass

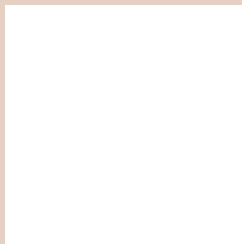
If you want to check with other color combinations, try the [Color Contrast Checker](#).

YIQ 213.0960, 17.2850, 0.6210

Background



This preview shows how black text looks on a background with the YIQ color 213.0960, 17.2850, 0.6210.



This preview shows how white text looks on a background with the YIQ color 213.0960, 17.2850,

0.6210.

Color Blindness Simulation

Color vision deficiency is a very complex topic, and I could not describe the different causes any better than Wikipedia does, so if you want to learn more, you should check out their [article about color blindness](#).

Dichromacy



Original Color

213.0960, 17.2850, 0.6210

Protanopia

212.0950, 9.8580, -2.4460

Deuteranopia

214.1400, 23.1530, 4.4090



Tritanopia

214.4950, 12.1480, 11.1240

Trichromacy



Original Color

213.0960, 17.2850, 0.6210

Protanomaly

212.5900, 12.8380, -1.3860

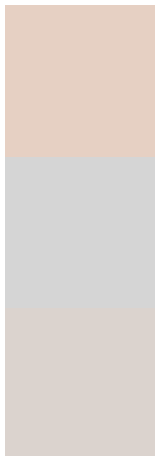
Deuteranomaly

213.8300, 21.0900, 3.2500

Tritanomaly

213.7570, 14.1660, 7.5900

Monochromacy



Original Color

213.0960, 17.2850, 0.6210

Achromatopsia

213.0000, -0.0000, 0.0000

Achromatomaly

212.8220, 6.3730, 0.1410

CSS Examples

Text

The CSS property to change the color of the text to YIQ 213.0960, 17.2850, 0.6210 is called "color". The color property can be set on classes, ids or directly on the HTML element.

This example shows how text in the color `rgb(230, 208, 195)` looks like.

```
.text, #text, p{  
    color:rgb(230, 208, 195)  
}
```

If you want to add a text shadow in that color use the text-shadow property, you can generate a text shadow directly with our [CSS Text Shadow Generator](#).

Here you see how black text with a 4 pixel rgb(230, 208, 195) colored shadow looks like.

```
.shadow{ text-shadow: 4px 4px 2px rgb(230, 208, 195) }
```

Border

The CSS property to change the border of an element to YIQ 213.0960, 17.2850, 0.6210 is called "border". The border property can be set on classes, ids or directly on the HTML element.

This example shows the color as border, it can be applied via the CSS property "border" or "border-color".

```
.border, #border, table{ border:4px solid rgb(230, 208, 195) }
```


If only the border color should be changed use the property `border-color`.

```
.border{ border-color:rgb(230, 208, 195) }
```

If you want to add a box shadow in that color use:

Here you see how a box with a 4 pixel `rgb(230, 208, 195)` colored shadow looks like.

```
.boxshadow{ -moz-box-shadow:4px 4px 4px  
4px rgb(230, 208, 195); -webkit-box-  
shadow:4px 4px 4px 4px rgb(230, 208, 195);  
box-shadow:4px 4px 4px 4px rgb(230, 208,  
195) }
```

Background

The CSS property to change the background color of an element to YIQ 213.0960, 17.2850, 0.6210 is called "background". The background property can be set on classes, ids or directly on the HTML element.

```
.background, #background, body{  
background: rgb(230, 208, 195) }
```

If only the background color should be changed can be used:

```
.background{ background-color: rgb(230,  
208, 195) }
```

This example shows the color as background, it is applied via the CSS property "background".

To optimize and compress your CSS code, you can use our [online CSS compressor and optimizer](#) based on csstidy. If you want to create a linear or radial gradient as background or border, check our [CSS Gradient Generator](#).

Hey! You found this booklet interesting? Support Converting Colors with the new Membership Option!

The pro membership hides all ads, plus gives you double the colors in the color bucket, and more awesome pro features!

[Learn more, Memberships starting at \\$2.50/m!](#)

**Follow me
on Twitter!**

@ConvertingColor