

Converting Colors

YIQ(213.8680, 17.9270, -0.0010)

Have a look what the booklet for
YIQ(213.8680, 17.9270, -0.0010)
contains.

YIQ(213.8680, 17.9270, -0.0010)	3
<i>Conversions</i>	4
<i>Details</i>	6
<i>Harmonies</i>	12
<i>Previews</i>	24
<i>Color Blindness Simulation</i>	28
<i>CSS Examples</i>	31

Color

**YIQ(213.8680, 17.9270,
-0.0010)**

Conversions

Conversions Part 1

Format	Color
Hex	E7D1C2
RGB	231, 209, 194
RGB Percent	91%, 82%, 76%
CMY	0.0941, 0.1804, 0.2391
CMYK	0.00, 0.10, 0.16, 0.09
HSL	24°, 44%, 83%
HSV	24°, 16%, 91%
XYZ	65.4967, 66.4831, 60.4318
YIQ	213.8680, 17.9270, -0.0010

Conversions

Conversions Part 2

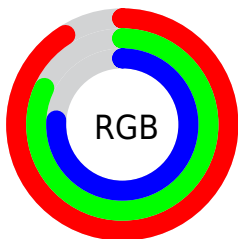
Format	Color
R _Y B	231, 219, 194
Decimal	15192514
CIE Lab	85.24, 5.25, 10.19
CIE LCh	85, 11.465, 62.770
Yxy	66.4831, 0.3404, 0.3455
Android (android.graphics.Color)	4293382594 (0xFFE7D1C2)
YUV	213.8680, -9.7949, 15.0248
Hunter-Lab	81.5372, 0.6944, 13.1328

Details

The YIQ color $213.8680, 17.9270, -0.0010$ is a light color, and the websafe version is hex `CCCCCC`. A complement of this color would be $211.1320, -17.9270, 0.0010$, and the grayscale version is $214.0000, -0.0000, 0.0000$.

A 20% lighter version of the original color is $254.4300, 1.6050, -1.5550$, and $159.2700, 16.7350, -0.4250$ is the 20% darker color. If you saturate the color by 10%, you get $203.0280, 29.1600, 0.1680$, and if you desaturate by 10%, it is $224.7080, 6.6940, -0.1700$.

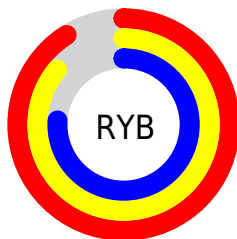
Distribution



Red (91%)

Green (82%)

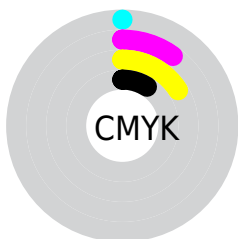
Blue (76%)



Red (91%)

Yellow (86%)

Blue (76%)

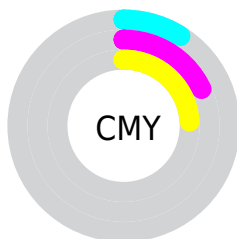


Cyan (0%)

Magenta (10%)

Yellow (16%)

Black (9%)



Cyan (9%)

Magenta (18%)

Yellow (24%)

Brightness & Saturation Gradients

These gradients show how the YIQ color 213.8680, 17.9270, -0.0010 changes by changing the brightness by 10 percent. The first figure shows a shift by +10% for each color and the second figure -10%.

Similar to the brightness gradients but the following saturation gradients show a change of the YIQ color 213.8680, 17.9270, -0.0010 by changing the saturation by 10% instead.

213.8680, 17.9270,
-0.0010

213.8680, 17.9270,
-0.0010

255.0000, -0.0000,
-0.0000

185.9820, 17.6060,
0.3100

254.5440, 1.2840,
-1.2440

159.2700, 16.7350,
-0.4250

133.0850, 15.8180,
-0.3260

107.7860, 15.2220,
-0.5380

83.6010, 14.3050,
-0.4390

60.4160, 13.3880,
-0.3400

38.2310, 12.4710,

-0.2410

■ 17.1880, 14.0300,
-0.9620

■ 0.0000, 0.0000,
0.0000

■ 213.8680, 17.9270,
-0.0010

■ 213.8680, 17.9270,
-0.0010

■ 203.0280, 29.1600,
0.1680

■ 224.7080, 6.6940,
-0.1700

■ 192.1880, 40.3930,
0.3370

■ 234.9610, -4.2640,
0.1840

■ 181.9350, 51.3510,
-0.0170

■ 244.8890,
-12.9290, -2.4730

■ 171.0950, 62.5840,
0.1520

■ 247.8240,
-14.3040, -5.0880

■ 160.2550, 73.8170,
0.3210

■ 149.3010, 85.3710,
0.1790

■ 139.0480, 96.3290,
-0.1750

■ 128.2080,
107.5620, -0.0060

■ 124.2470,
111.8260, -0.1900

Harmonies

Analogous

The Analogous color harmony consists of three colors that are next to each other on the color wheel.



214.5140, 19.1640, 5.1160



213.8680, 17.9270, -0.0010



212.2970, 12.1050, -4.6230

Triad

The Triadic color harmony groups three colors that are evenly spaced from another and form a triangle on the color wheel.



213.8680, 17.9270, -0.0010



209.7480, -17.1460, -8.6500



214.4870, -2.5690, 8.0150

Complementary

The Complementary color scheme is a pair of colors which are on the opposite of each other on the color wheel.



213.8680, 17.9270, -0.0010



211.1320, -17.9270, 0.0010

Split Complementary

Split-complementary colors differ from the complementary color scheme. The scheme consists of three colors, the original color and two neighbors of the complement color.



212.4040, -12.7010, 4.4110



213.8680, 17.9270, -0.0010



209.7030, -21.2730, -5.4410

Square

The Square scheme is like the rectangle color scheme, but the four colors are evenly spaced on the color wheel.



213.8680, 17.9270, -0.0010



210.0110, -7.7010, -9.1170



211.2350, -19.7150, -0.6350



215.1030, 7.3800, 9.4280

Rectangle

The Rectangle color scheme consists of four colors that form a rectangle on the color wheel.



213.8680, 17.9270, -0.0010



211.8940, 5.8700, -7.2660



211.2350, -19.7150, -0.6350



213.8070, -6.4660, 7.0540

Sweetspot

The Sweet Spot groups the original color and five complimentary colors.



213.8680, 17.9270, -0.0010



248.8220, 6.3730, 0.1410



207.5710, 14.9900, 14.6860



124.1530, 3.9430, 0.1270



0.0000, 0.0000, 0.0000



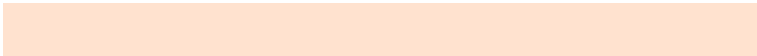
128.0000, -0.0000, -0.0000

Same Dimension

The Same Dimension uses a secret algorithm to generate beautiful new colors.



213.8680, 17.9270, -0.0010



232.5050, 23.3830, 0.2390



224.4340, 12.9770, -9.4150



109.5230, 5.7770, -0.0710



95.7850, 86.8840, 0.2920



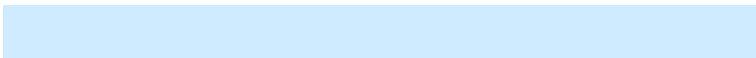
27.5760, 24.6210, -0.1710

Inverse Universe

The Inverse Universe completely reimagines the original color for something new.



211.1320, -17.9270, 0.0010



228.9080, -23.1080, 0.2840



200.5660, -12.9770, 9.4150



108.4770, -5.7770, 0.0710



82.6280, -86.6090, 0.2310



23.4240, -24.6210, 0.1710

Previews

White Background



This preview shows how the YIQ color 213.8680, 17.9270, -0.0010 looks on a white background.

Color Contrast Check

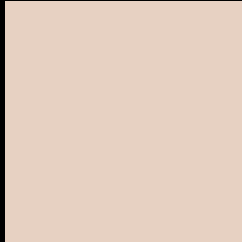
Large Text (above 18pt) WCAG AA × Fail

Any Text WCAG AA × Fail

Large Text (above 18pt) WCAG AAA × Fail

Any Text WCAG AAA × Fail

Black Background



This preview shows how the YIQ color 213.8680, 17.9270, -0.0010 looks on a black background.

Color Contrast Check

Large Text (above 18pt) WCAG AA ✓ Pass

Any Text WCAG AA ✓ Pass

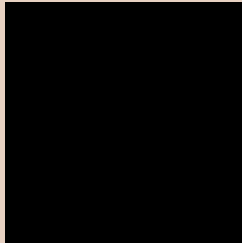
Large Text (above 18pt) WCAG AAA ✓ Pass

Any Text WCAG AAA ✓ Pass

If you want to check with other color combinations, try the [Color Contrast Checker](#).

YIQ 213.8680, 17.9270, -0.0010

Background



This preview shows how black text looks on a background with the YIQ color 213.8680, 17.9270, -0.0010.



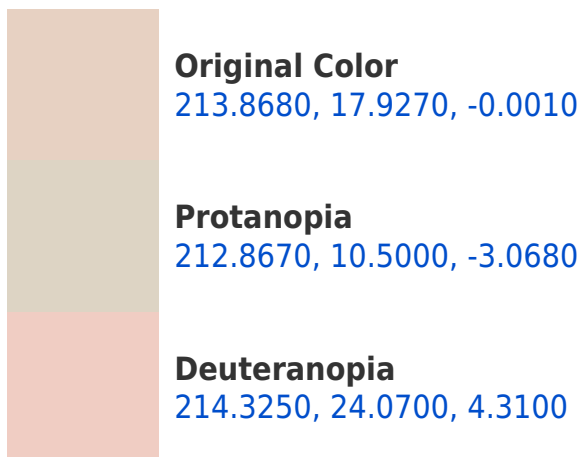
This preview shows how white text looks on a background with the YIQ color 213.8680, 17.9270, -0.0010.

-0.0010.

Color Blindness Simulation

Color vision deficiency is a very complex topic, and I could not describe the different causes any better than Wikipedia does, so if you want to learn more, you should check out their [article about color blindness](#).

Dichromacy





Tritanopia

215.7940, 12.7440, 11.3360

Trichromacy



Original Color

213.8680, 17.9270, -0.0010

Protanomaly

213.3620, 13.4800, -2.0080

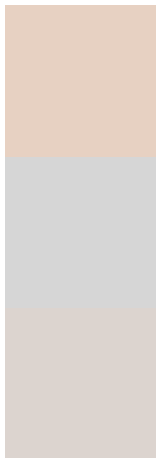
Deuteranomaly

214.0150, 22.0070, 3.1510

Tritanomaly

214.9420, 15.0830, 7.4910

Monochromacy



Original Color

213.8680, 17.9270, -0.0010

Achromatopsia

214.0000, -0.0000, 0.0000

Achromatomaly

213.8220, 6.3730, 0.1410

CSS Examples

Text

The CSS property to change the color of the text to YIQ 213.8680, 17.9270, -0.0010 is called "color". The color property can be set on classes, ids or directly on the HTML element.

This example shows how text in the color `rgb(231, 209, 194)` looks like.

```
.text, #text, p{  
    color:rgb(231, 209, 194)  
}
```

If you want to add a text shadow in that color use the text-shadow property, you can generate a text shadow directly with our [CSS Text Shadow Generator](#).

Here you see how black text with a 4 pixel rgb(231, 209, 194) colored shadow looks like.

```
.shadow{ text-shadow: 4px 4px 2px rgb(231, 209, 194) }
```

Border

The CSS property to change the border of an element to YIQ 213.8680, 17.9270, -0.0010 is called "border". The border property can be set on classes, ids or directly on the HTML element.

This example shows the color as border, it can be applied via the CSS property "border" or "border-color".

```
.border, #border, table{ border:4px solid rgb(231, 209, 194) }
```


If only the border color should be changed use the property `border-color`.

```
.border{ border-color:rgb(231, 209, 194) }
```

If you want to add a box shadow in that color use:

Here you see how a box with a 4 pixel `rgb(231, 209, 194)` colored shadow looks like.

```
.boxshadow{ -moz-box-shadow:4px 4px 4px  
4px rgb(231, 209, 194); -webkit-box-  
shadow:4px 4px 4px 4px rgb(231, 209, 194);  
box-shadow:4px 4px 4px 4px rgb(231, 209,  
194) }
```

Background

The CSS property to change the background color of an element to YIQ 213.8680, 17.9270, -0.0010 is called "background". The background property can be set on classes, ids or directly on the HTML element.

```
.background, #background, body{  
background: rgb(231, 209, 194) }
```

If only the background color should be changed can be used:

```
.background{ background-color: rgb(231,  
209, 194) }
```

This example shows the color as background, it is applied via the CSS property "background".

To optimize and compress your CSS code, you can use our [online CSS compressor and optimizer](#) based on csstidy. If you want to create a linear or radial gradient as background or border, check our [CSS Gradient Generator](#).

Hey! You found this booklet interesting? Support Converting Colors with the new Membership Option!

The pro membership hides all ads, plus gives you double the colors in the color bucket, and more awesome pro features!

[Learn more, Memberships starting at \\$2.50/m!](#)

**Follow me
on Twitter!**

@ConvertingColor