

# Converting Colors

YIQ(214.4660, 19.1190, 0.4230)

Have a look what the booklet for  
YIQ(214.4660, 19.1190, 0.4230)  
contains.

<b>YIQ(214.4660, 19.1190, 0.4230)</b> .....	3
<b><i>Conversions</i></b> .....	4
<b><i>Details</i></b> .....	6
<b><i>Harmonies</i></b> .....	12
<b><i>Previews</i></b> .....	24
<b><i>Color Blindness Simulation</i></b> .....	28
<b><i>CSS Examples</i></b> .....	31

# Color

**YIQ(214.4660, 19.1190,  
0.4230)**

# Conversions

## Conversions Part 1

Format	Color
Hex	E9D1C2
RGB	233, 209, 194
RGB Percent	91%, 82%, 76%
CMY	0.0862, 0.1804, 0.2391
CMYK	0.00, 0.10, 0.17, 0.09
HSL	23°, 47%, 84%
HSV	23°, 17%, 91%
XYZ	66.1463, 66.8177, 60.4629
YIQ	214.4660, 19.1190, 0.4230

# Conversions

## Conversions Part 2

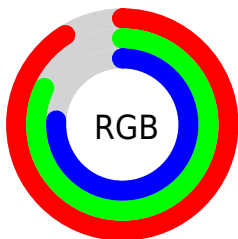
Format	Color
RYB	233, 218, 194
Decimal	15323586
CIELab	85.41, 5.97, 10.46
CIElCh	85, 12.043, 60.279
Yxy	66.8177, 0.3420, 0.3454
Android (android.graphics.Color)	4293513666 (0xFFE9D1C2)
YUV	214.4660, -10.0897, 16.2543
Hunter-Lab	81.7421, 1.3949, 13.3639

# Details

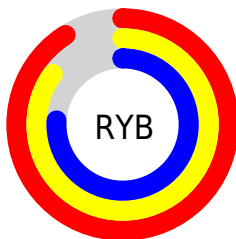
The YIQ color  $214.4660, 19.1190, 0.4230$  is a light color, and the websafe version is hex `CCCCCC`. A complement of this color would be  $212.5340, -19.1190, -0.4230$ , and the grayscale version is  $215.0000, -0.0000, -0.0000$ .

A 20% lighter version of the original color is  $254.4300, 1.6050, -1.5550$ , and  $159.8680, 17.9270, -0.0010$  is the 20% darker color. If you saturate the color by 10%, you get  $203.6260, 30.3520, 0.5920$ , and if you desaturate by 10%, it is  $225.3060, 7.8860, 0.2540$ .

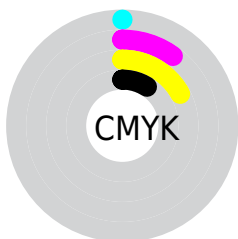
# Distribution



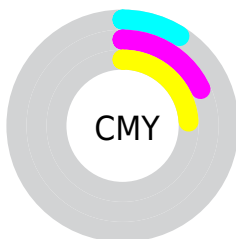
- Red (91%)
- Green (82%)
- Blue (76%)



- Red (91%)
- Yellow (85%)
- Blue (76%)



- Cyan (0%)
- Magenta (10%)
- Yellow (17%)
- Black (9%)



- Cyan (9%)
- Magenta (18%)
- Yellow (24%)

# Brightness & Saturation Gradients

These gradients show how the YIQ color 214.4660, 19.1190, 0.4230 changes by changing the brightness by 10 percent. The first figure shows a shift by +10% for each color and the second figure -10%.

Similar to the brightness gradients but the following saturation gradients show a change of the YIQ color 214.4660, 19.1190, 0.4230 by changing the saturation by 10% instead.



214.4660, 19.1190,  
0.4230

214.4660, 19.1190,  
0.4230

255.0000, -0.0000,  
-0.0000

186.5800, 18.7980,  
0.7340

254.5440, 1.2840,  
-1.2440

159.8680, 17.9270,  
-0.0010

133.6830, 17.0100,  
0.0980

108.3840, 16.4140,  
-0.1140

83.6120, 15.7720,  
0.5080

60.7150, 13.9840,  
-0.1280

38.5300, 13.0670,

-0.0290

■ 17.4870, 14.6260,  
-0.7500

■ 0.0000, 0.0000,  
0.0000

■ 214.4660, 19.1190,  
0.4230

■ 214.4660, 19.1190,  
0.4230

■ 203.6260, 30.3520,  
0.5920

■ 225.3060, 7.8860,  
0.2540

■ 192.0850, 42.1810,  
0.9730

■ 236.8470, -3.9430,  
-0.1270

■ 181.2450, 53.4140,  
1.1420

■ 246.6610,  
-12.2870, -3.0950

■ 170.4050, 64.6470,  
1.3110

■ 248.4220,  
-13.1120, -4.6640

■ 158.9780, 76.1550,  
2.0030

■ 148.0240, 87.7090,  
1.8610

■ 137.1840, 98.9420,  
2.0300

■ 125.7570,  
110.4500, 2.7220

■ 121.9100,  
114.3930, 2.8490

# Harmonies

## Analogous

The Analogous color harmony consists of three colors that are next to each other on the color wheel.



215.1120, 20.3560, 5.5400



214.4660, 19.1190, 0.4230



213.4820, 13.0220, -4.7220

# Triad

The Triadic color harmony groups three colors that are evenly spaced from another and form a triangle on the color wheel.



214.4660, 19.1190, 0.4230



209.6340, -16.8250, -8.9610



215.0030, -4.0820, 7.9020

# Complementary

The Complementary color scheme is a pair of colors which are on the opposite of each other on the color wheel.



214.4660, 19.1190, 0.4230



212.5340, -19.1190, -0.4230

# Split Complementary

Split-complementary colors differ from the complementary color scheme. The scheme consists of three colors, the original color and two neighbors of the complement color.



212.9200, -14.2140, 4.2980



214.4660, 19.1190, 0.4230



209.9910, -22.1440, -6.1760

# Square

The Square scheme is like the rectangle color scheme, but the four colors are evenly spaced on the color wheel.



214.4660, 19.1190, 0.4230



210.4840, -7.6550, -9.9510



211.3380, -21.5030, -1.2710



215.6300, 7.3340, 10.2620



# Rectangle

The Rectangle color scheme consists of four colors that form a rectangle on the color wheel.



214.4660, 19.1190, 0.4230



212.0790, 6.7870, -7.3650



211.3380, -21.5030, -1.2710



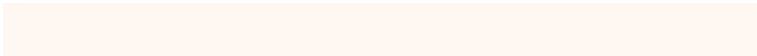
214.3230, -7.9790, 6.9410

# Sweetspot

The Sweet Spot groups the original color and five complimentary colors.



214.4660, 19.1190, 0.4230



248.8220, 6.3730, 0.1410



208.3970, 15.5400, 15.7320



124.1530, 3.9430, 0.1270



0.0000, 0.0000, 0.0000



128.0000, -0.0000, -0.0000

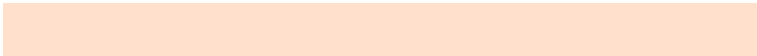


# Same Dimension

The Same Dimension uses a secret algorithm to generate beautiful new colors.



214.4660, 19.1190, 0.4230



230.9890, 24.8960, 0.3520



225.6190, 13.8940, -9.5140



111.6370, 5.4560, 0.2400



95.2090, 88.6260, 1.7620



28.4730, 26.4090, 0.4650

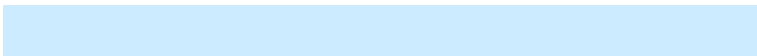


# Inverse Universe

The Inverse Universe completely reimagines the original color for something new.



212.5340, -19.1190, -0.4230



228.0110, -24.8960, -0.3520



201.3810, -13.8940, 9.5140



111.3630, -5.4560, -0.2400



86.3780, -88.9010, -2.2850

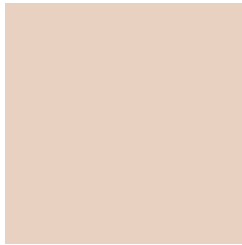


25.5270, -26.4090, -0.4650



# Previews

## White Background



This preview shows how the YIQ color 214.4660, 19.1190, 0.4230 looks on a white background.

## Color Contrast Check

Large Text (above 18pt) WCAG AA × Fail

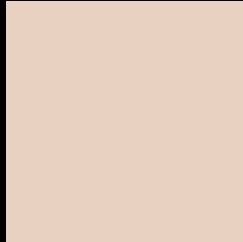
Any Text WCAG AA × Fail

Large Text (above 18pt) WCAG AAA × Fail

Any Text WCAG AAA × Fail



# Black Background



This preview shows how the YIQ color 214.4660, 19.1190, 0.4230 looks on a black background.

## Color Contrast Check

Large Text (above 18pt) WCAG AA ✓ Pass

Any Text WCAG AA ✓ Pass

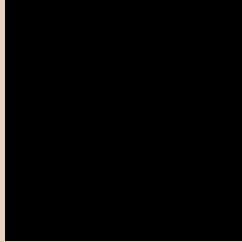
Large Text (above 18pt) WCAG AAA ✓ Pass

Any Text WCAG AAA ✓ Pass

If you want to check with other color combinations, try the [Color Contrast Checker](#).

**YIQ 214.4660, 19.1190, 0.4230**

## **Background**



This preview shows how black text looks on a background with the YIQ color 214.4660, 19.1190, 0.4230.



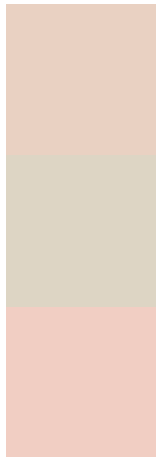
This preview shows how white text looks on a background with the YIQ color 214.4660, 19.1190,

0.4230.

# Color Blindness Simulation

Color vision deficiency is a very complex topic, and I could not describe the different causes any better than Wikipedia does, so if you want to learn more, you should check out their [article about color blindness](#).

## Dichromacy



### Original Color

214.4660, 19.1190, 0.4230

### Protanopia

213.4540, 10.2250, -3.5910

### Deuteranopia

215.2110, 24.3910, 3.9990



## Tritanopia

216.3920, 13.9360, 11.7600

# Trichromacy



## Original Color

214.4660, 19.1190, 0.4230

## Protanomaly

213.9490, 13.2050, -2.5310

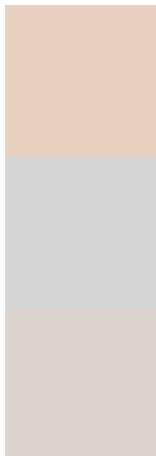
## Deuteranomaly

214.9010, 22.3280, 2.8400

## Tritanomaly

215.5400, 16.2750, 7.9150

# Monochromacy



## Original Color

214.4660, 19.1190, 0.4230

## Achromatopsia

214.0000, -0.0000, 0.0000

## Achromatomaly

214.1210, 6.9690, 0.3530

# CSS Examples

## Text

The CSS property to change the color of the text to YIQ 214.4660, 19.1190, 0.4230 is called "color". The color property can be set on classes, ids or directly on the HTML element.

This example shows how text in the color `rgb(233, 209, 194)` looks like.

```
.text, #text, p{  
    color:rgb(233, 209, 194)  
}
```

If you want to add a text shadow in that color use the text-shadow property, you can generate a text shadow directly with our [CSS Text Shadow Generator](#).

Here you see how black text with a 4 pixel rgb(233, 209, 194) colored shadow looks like.

```
.shadow{ text-shadow: 4px 4px 2px rgb(233, 209, 194) }
```

## Border

The CSS property to change the border of an element to YIQ 214.4660, 19.1190, 0.4230 is called "border". The border property can be set on classes, ids or directly on the HTML element.

This example shows the color as border, it can be applied via the CSS property "border" or "border-color".

```
.border, #border, table{ border:4px solid rgb(233, 209, 194) }
```



If only the border color should be changed use the property `border-color`.

```
.border{ border-color:rgb(233, 209, 194) }
```

If you want to add a box shadow in that color use:

Here you see how a box with a 4 pixel `rgb(233, 209, 194)` colored shadow looks like.

```
.boxshadow{ -moz-box-shadow:4px 4px 4px  
4px rgb(233, 209, 194); -webkit-box-  
shadow:4px 4px 4px 4px rgb(233, 209, 194);  
box-shadow:4px 4px 4px 4px rgb(233, 209,  
194) }
```

# Background

The CSS property to change the background color of an element to YIQ 214.4660, 19.1190, 0.4230 is called "background". The background property can be set on classes, ids or directly on the HTML element.

```
.background, #background, body{  
background: rgb(233, 209, 194) }
```

If only the background color should be changed can be used:

```
.background{ background-color: rgb(233,  
209, 194) }
```

This example shows the color as background, it is applied via the CSS property "background".

To optimize and compress your CSS code, you can use our [online CSS compressor and optimizer](#) based on csstidy. If you want to create a linear or radial gradient as background or border, check our [CSS Gradient Generator](#).

Hey! You found this booklet interesting? Support Converting Colors with the new Membership Option!

The pro membership hides all ads, plus gives you double the colors in the color bucket, and more awesome pro features!

**[Learn more, Memberships starting at \\$2.50/m!](#)**

**Follow me  
on Twitter!**

@ConvertingColor