

Converting Colors

YIQ(214.5200, 19.0270, 2.0910)

Have a look what the booklet for
YIQ(214.5200, 19.0270, 2.0910)
contains.

YIQ(214.5200, 19.0270, 2.0910)	3
<i>Conversions</i>	4
<i>Details</i>	6
<i>Harmonies</i>	12
<i>Previews</i>	24
<i>Color Blindness Simulation</i>	28
<i>CSS Examples</i>	31

Color

**YIQ(214.5200, 19.0270,
2.0910)**

Conversions

Conversions Part 1

Format	Color
Hex	EAD0C5
RGB	234, 208, 197
RGB Percent	92%, 82%, 77%
CMY	0.0823, 0.1843, 0.2274
CMYK	0.00, 0.11, 0.16, 0.08
HSL	18°, 47%, 85%
HSV	18°, 16%, 92%
XYZ	66.5700, 66.6334, 62.1891
YIQ	214.5200, 19.0270, 2.0910

Conversions

Conversions Part 2

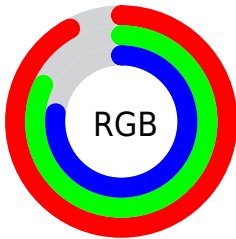
Format	Color
RYB	234, 213, 197
Decimal	15388869
CIELab	85.32, 7.32, 8.75
CIELCh	85, 11.405, 50.091
Yxy	66.6334, 0.3407, 0.3410
Android (android.graphics.Color)	4293578949 (0xFFEAD0C5)
YUV	214.5200, -8.6374, 17.0840
Hunter-Lab	81.6293, 2.7184, 11.9705

Details

The YIQ color $214.5200, 19.0270, 2.0910$ is a light color, and the websafe version is hex FFCCCC . A complement of this color would be $216.4800, -19.0270, -2.0910$, and the grayscale version is $215.0000, -0.0000, -0.0000$.

A 20% lighter version of the original color is $254.8860, 0.3210, -0.3110$, and $159.9220, 17.8350, 1.6670$ is the 20% darker color. If you saturate the color by 10%, you get $202.5060, 30.8100, 3.3060$, and if you desaturate by 10%, it is $226.5340, 7.2440, 0.8760$.

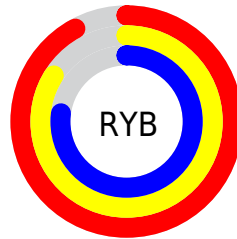
Distribution



Red (92%)

Green (82%)

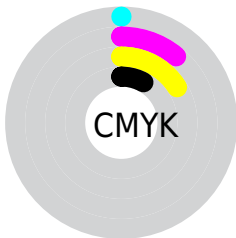
Blue (77%)



Red (92%)

Yellow (84%)

Blue (77%)

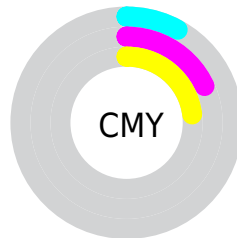


Cyan (0%)

Magenta (11%)

Yellow (16%)

Black (8%)



Cyan (8%)


Magenta (18%)


Yellow (23%)

Brightness & Saturation Gradients


These gradients show how the YIQ color 214.5200, 19.0270, 2.0910 changes by changing the brightness by 10 percent. The first figure shows a shift by +10% for each color and the second figure -10%.

Similar to the brightness gradients but the following saturation gradients show a change of the YIQ color 214.5200, 19.0270, 2.0910 by changing the saturation by 10% instead.


 214.5200, 19.0270,
2.0910


 214.5200, 19.0270,
2.0910


255.0000, -0.0000,
-0.0000


 186.6340, 18.7060,
2.4020


254.8860, 0.3210,
-0.3110

 159.9220, 17.8350,
1.6670

 133.7370, 16.9180,
1.7660

 108.4380, 16.3220,
1.5540

 84.1390, 15.7260,
1.3420

 60.6550, 14.2130,
1.2290

 38.4700, 13.2960,

1.3280

■ 17.1990, 15.4970,
-0.0150

■ 0.0000, 0.0000,
0.0000

■ 214.5200, 19.0270,
2.0910

■ 214.5200, 19.0270,
2.0910

■ 202.5060, 30.8100,
3.3060

■ 226.5340, 7.2440,
0.8760

■ 189.7910, 43.1890,
4.7330

■ 239.2490, -5.1350,
-0.5510

■ 177.7770, 54.9720,
5.9480

■ 248.7210,
-12.5160, -4.4520

■ 165.0620, 67.3510,
7.3750

■ 153.0480, 79.1340,
8.5900

■ 140.4470, 91.1920,
10.3280

■ 128.3190,
103.2960, 11.2320

■ 115.7180,
115.3540, 12.9700

■ 110.4690,
120.4890, 13.5210

Harmonies

Analogous

The Analogous color harmony consists of three colors that are next to each other on the color wheel.



215.2690, 18.4760, 6.5720



214.5200, 19.0270, 2.0910



213.3190, 15.0390, -2.7290

Triad

The Triadic color harmony groups three colors that are evenly spaced from another and form a triangle on the color wheel.



214.5200, 19.0270, 2.0910



209.4880, -13.4780, -9.0460



214.0950, -7.3370, 6.3190

Complementary

The Complementary color scheme is a pair of colors which are on the opposite of each other on the color wheel.



214.5200, 19.0270, 2.0910



216.4800, -19.0270, -2.0910

Split Complementary

Split-complementary colors differ from the complementary color scheme. The scheme consists of three colors, the original color and two neighbors of the complement color.



212.0830, -16.2310, 2.3050



214.5200, 19.0270, 2.0910



210.1330, -19.6680, -6.9960

Square

The Square scheme is like the rectangle color scheme, but the four colors are evenly spaced on the color wheel.



214.5200, 19.0270, 2.0910



211.0500, -3.4370, -9.3010



210.5830, -20.8150, -2.7270



214.9500, 3.4370, 9.3010

Rectangle

The Rectangle color scheme consists of four colors that form a rectangle on the color wheel.



214.5200, 19.0270, 2.0910



212.6880, 9.4460, -5.9940



210.5830, -20.8150, -2.7270



213.3010, -10.9130, 5.0470

Sweetspot

The Sweet Spot groups the original color and five complimentary colors.



214.5200, 19.0270, 2.0910



248.2350, 6.6480, 0.6640



211.1410, 13.3850, 16.2410



123.5660, 4.2180, 0.6500



0.0000, 0.0000, 0.0000



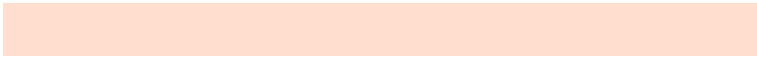
128.0000, -0.0000, -0.0000

Same Dimension

The Same Dimension uses a secret algorithm to generate beautiful new colors.



214.5200, 19.0270, 2.0910



229.5700, 24.7580, 2.8540



225.0860, 14.0770, -7.3230



111.0500, 5.7310, 0.7630



85.8170, 93.0260, 10.1300



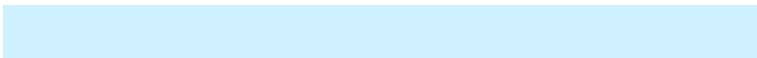
25.5380, 27.7840, 3.0800

Inverse Universe

The Inverse Universe completely reimagines the original color for something new.



216.4800, -19.0270, -2.0910



232.4300, -24.7580, -2.8540



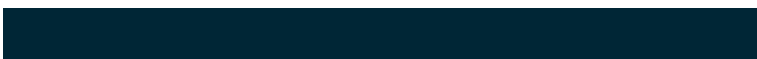
205.9140, -14.0770, 7.3230



111.9500, -5.7310, -0.7630



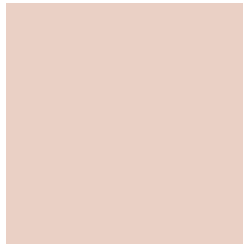
95.1830, -93.0260, -10.1300



28.4620, -27.7840, -3.0800

Previews

White Background



This preview shows how the YIQ color 214.5200, 19.0270, 2.0910 looks on a white background.

Color Contrast Check

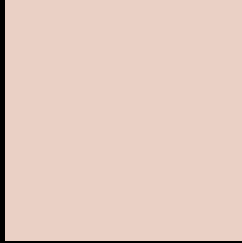
Large Text (above 18pt) WCAG AA × Fail

Any Text WCAG AA × Fail

Large Text (above 18pt) WCAG AAA × Fail

Any Text WCAG AAA × Fail

Black Background



This preview shows how the YIQ color 214.5200, 19.0270, 2.0910 looks on a black background.

Color Contrast Check

Large Text (above 18pt) WCAG AA ✓ Pass

Any Text WCAG AA ✓ Pass

Large Text (above 18pt) WCAG AAA ✓ Pass

Any Text WCAG AAA ✓ Pass

If you want to check with other color combinations, try the [Color Contrast Checker](#).

YIQ 214.5200, 19.0270, 2.0910

Background



This preview shows how black text looks on a background with the YIQ color 214.5200, 19.0270, 2.0910.



This preview shows how white text looks on a background with the YIQ color 214.5200, 19.0270,

Color Blindness Simulation

Color vision deficiency is a very complex topic, and I could not describe the different causes any better than Wikipedia does, so if you want to learn more, you should check out their [article about color blindness](#).

Dichromacy



Original Color

214.5200, 19.0270, 2.0910

Protanopia

212.9100, 8.9410, -2.3470

Deuteranopia

215.1400, 23.1530, 4.4090



Tritanopia

215.6910, 14.5320, 11.9720

Trichromacy



Original Color

214.5200, 19.0270, 2.0910

Protanomaly

213.7040, 12.5170, -1.0750

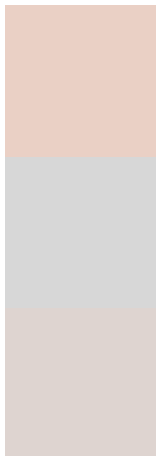
Deuteranomaly

215.1290, 21.6860, 3.4620

Tritanomaly

215.0670, 16.2290, 8.7490

Monochromacy



Original Color

214.5200, 19.0270, 2.0910

Achromatopsia

215.0000, -0.0000, -0.0000

Achromatomaly

214.5340, 7.2440, 0.8760

CSS Examples

Text

The CSS property to change the color of the text to YIQ 214.5200, 19.0270, 2.0910 is called "color". The color property can be set on classes, ids or directly on the HTML element.

This example shows how text in the color `rgb(234, 208, 197)` looks like.

```
.text, #text, p{  
    color:rgb(234, 208, 197)  
}
```

If you want to add a text shadow in that color use the text-shadow property, you can generate a text shadow directly with our [CSS Text Shadow Generator](#).

Here you see how black text with a 4 pixel rgb(234, 208, 197) colored shadow looks like.

```
.shadow{ text-shadow: 4px 4px 2px rgb(234, 208, 197) }
```

Border

The CSS property to change the border of an element to YIQ 214.5200, 19.0270, 2.0910 is called "border". The border property can be set on classes, ids or directly on the HTML element.

This example shows the color as border, it can be applied via the CSS property "border" or "border-color".

```
.border, #border, table{ border:4px solid rgb(234, 208, 197) }
```


If only the border color should be changed use the property `border-color`.

```
.border{ border-color:rgb(234, 208, 197) }
```

If you want to add a box shadow in that color use:

Here you see how a box with a 4 pixel `rgb(234, 208, 197)` colored shadow looks like.

```
.boxshadow{ -moz-box-shadow:4px 4px 4px  
4px rgb(234, 208, 197); -webkit-box-  
shadow:4px 4px 4px 4px rgb(234, 208, 197);  
box-shadow:4px 4px 4px 4px rgb(234, 208,  
197) }
```

Background

The CSS property to change the background color of an element to YIQ 214.5200, 19.0270, 2.0910 is called "background". The background property can be set on classes, ids or directly on the HTML element.

```
.background, #background, body{  
background: rgb(234, 208, 197) }
```

If only the background color should be changed can be used:

```
.background{ background-color: rgb(234,  
208, 197) }
```

This example shows the color as background, it is applied via the CSS property "background".

To optimize and compress your CSS code, you can use our [online CSS compressor and optimizer](#) based on csstidy. If you want to create a linear or radial gradient as background or border, check our [CSS Gradient Generator](#).

Hey! You found this booklet interesting? Support Converting Colors with the new Membership Option!

The pro membership hides all ads, plus gives you double the colors in the color bucket, and more awesome pro features!

[Learn more, Memberships starting at \\$2.50/m!](#)

**Follow me
on Twitter!**

@ConvertingColor