

# Converting Colors

YIQ(214.6350, 26.1330, 5.4690)

Have a look what the booklet for  
YIQ(214.6350, 26.1330, 5.4690)  
contains.

<b>YIQ(214.6350, 26.1330, 5.4690)</b> .....	3
<b><i>Conversions</i></b> .....	4
<b><i>Details</i></b> .....	6
<b><i>Harmonies</i></b> .....	12
<b><i>Previews</i></b> .....	24
<b><i>Color Blindness Simulation</i></b> .....	28
<b><i>CSS Examples</i></b> .....	31

# Color

**YIQ(214.6350, 26.1330,  
5.4690)**

# Conversions

## Conversions Part 1

<b>Format</b>	<b>Color</b>
Hex	F3CCC3
RGB	243, 204, 195
RGB Percent	95%, 80%, 76%
CMY	0.0470, 0.2000, 0.2352
CMYK	0.00, 0.16, 0.20, 0.05
HSL	11°, 67%, 86%
HSV	11°, 20%, 95%
XYZ	68.4123, 66.1780, 60.8144
YIQ	214.6350, 26.1330, 5.4690

# Conversions

## Conversions Part 2

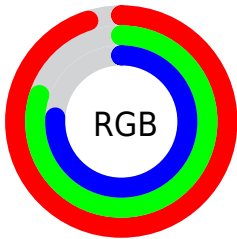
Format	Color
R <sub>Y</sub> B	243, 206, 195
Decimal	15977667
CIE Lab	85.09, 12.37, 9.58
CIE LCh	85, 15.649, 37.752
Yxy	66.1780, 0.3501, 0.3387
Android (android.graphics.Color)	4294167747 (0xFFFF3CCC3)
YUV	214.6350, -9.6801, 24.8761
Hunter-Lab	81.3498, 7.7499, 12.6217

# Details

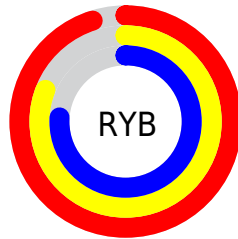
The YIQ color  $214.6350, 26.1330, 5.4690$  is a light color, and the websafe version is hex  $\text{FFCCCC}$ . A complement of this color would be  $223.3650, -26.1330, -5.4690$ , and the grayscale version is  $215.0000, -0.0000, -0.0000$ .

A 20% lighter version of the original color is  $254.6580, 0.9630, -0.9330$ , and  $159.7380, 24.3450, 4.8330$  is the 20% darker color. If you saturate the color by 10%, you get  $200.1590, 39.3370, 8.4650$ , and if you desaturate by 10%, it is  $229.1110, 12.9290, 2.4730$ .

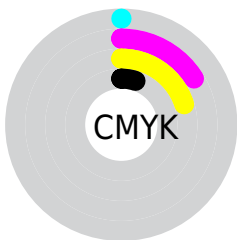
# Distribution



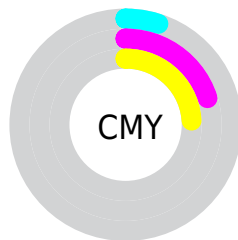
- Red (95%)
- Green (80%)
- Blue (76%)



- Red (95%)
- Yellow (81%)
- Blue (76%)



- Cyan (0%)
- Magenta (16%)
- Yellow (20%)
- Black (5%)



- Cyan (5%)
- Magenta (20%)
- Yellow (24%)

# Brightness & Saturation Gradients

These gradients show how the YIQ color 214.6350, 26.1330, 5.4690 changes by changing the brightness by 10 percent. The first figure shows a shift by +10% for each color and the second figure -10%.

Similar to the brightness gradients but the following saturation gradients show a change of the YIQ color 214.6350, 26.1330, 5.4690 by changing the saturation by 10% instead.



214.6350, 26.1330,  
5.4690

214.6350, 26.1330,  
5.4690

255.0000, -0.0000,  
-0.0000

187.0370, 24.9410,  
5.0450

254.6580, 0.9630,  
-0.9330

159.7380, 24.3450,  
4.8330

133.5530, 23.4280,  
4.9320

107.9550, 22.2360,  
4.5080

83.7700, 21.3190,  
4.6070

60.2860, 19.8060,  
4.4940

38.3890, 18.0180,

3.8580

■ 15.7590, 19.8520,  
3.6600

■ 0.0000, 0.0000,  
0.0000

■ 214.6350, 26.1330,  
5.4690

■ 214.6350, 26.1330,  
5.4690

■ 200.1590, 39.3370,  
8.4650

■ 229.1110, 12.9290,  
2.4730

■ 185.5690, 52.8620,  
11.1500

■ 243.7010, -0.5960,  
-0.2120

■ 171.6800, 65.7910,  
13.6230

■ 251.4120, -7.1520,  
-2.5440

■ 157.2040, 78.9950,  
16.6190

■ 142.7280, 92.1990,  
19.6150

■ 128.1380,  
105.7240, 22.3000

■ 114.2490,  
118.6530, 24.7730

■ 99.7730, 131.8570,  
27.7690

■ 99.0720, 132.4530,  
27.9810

# Harmonies

## Analogous

The Analogous color harmony consists of three colors that are next to each other on the color wheel.



215.0570, 22.1890, 10.8690



214.6350, 26.1330, 5.4690



213.5650, 23.1540, -1.1180

# Triad

The Triadic color harmony groups three colors that are evenly spaced from another and form a triangle on the color wheel.



214.6350, 26.1330, 5.4690



208.2660, -12.9730, -12.6930



212.1310, -16.1860, 6.9980

# Complementary

The Complementary color scheme is a pair of colors which are on the opposite of each other on the color wheel.



214.6350, 26.1330, 5.4690



223.3650, -26.1330, -5.4690

# Split Complementary

Split-complementary colors differ from the complementary color scheme. The scheme consists of three colors, the original color and two neighbors of the complement color.



209.9400, -26.1340, 0.0580



214.6350, 26.1330, 5.4690



207.2740, -24.6190, -10.8830

# Square

The Square scheme is like the rectangle color scheme, but the four colors are evenly spaced on the color wheel.



214.6350, 26.1330, 5.4690



209.9210, 1.2400, -11.4640



207.6850, -30.0300, -6.4300



214.7800, -1.8360, 11.2520



# Rectangle

The Rectangle color scheme consists of four colors that form a rectangle on the color wheel.



214.6350, 26.1330, 5.4690



212.2930, 17.9280, -5.5280



207.6850, -30.0300, -6.4300



211.5110, -20.3120, 4.6800

# Sweetspot

The Sweet Spot groups the original color and five complimentary colors.



214.6350, 26.1330, 5.4690



246.2460, 8.1150, 1.6110



213.7980, 16.0890, 22.3050



122.2780, 5.0890, 1.3850



0.0000, 0.0000, 0.0000



128.0000, -0.0000, -0.0000



# Same Dimension

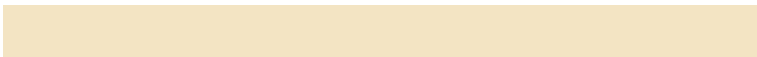
The Same Dimension uses a secret algorithm to generate beautiful new colors.



214.6350, 26.1330, 5.4690



218.6960, 33.3310, 7.1790



228.7230, 19.5330, -7.0830



114.7620, 6.6020, 1.4980



76.1590, 101.2310, 21.1270



24.0980, 32.1390, 6.7550



# Inverse Universe

The Inverse Universe completely reimagines the original color for something new.



223.3650, -26.1330, -5.4690



230.3040, -33.3310, -7.1790



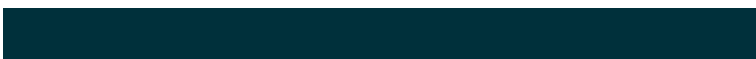
209.2770, -19.5330, 7.0830



117.2380, -6.6020, -1.4980



109.8410, -101.2310, -21.1270



34.9020, -32.1390, -6.7550



# Previews

## White Background



This preview shows how the YIQ color 214.6350, 26.1330, 5.4690 looks on a white background.

## Color Contrast Check

Large Text (above 18pt) WCAG AA × Fail

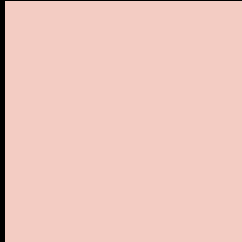
Any Text WCAG AA × Fail

Large Text (above 18pt) WCAG AAA × Fail

Any Text WCAG AAA × Fail



# Black Background



This preview shows how the YIQ color 214.6350, 26.1330, 5.4690 looks on a black background.

## Color Contrast Check

Large Text (above 18pt) WCAG AA ✓ Pass

Any Text WCAG AA ✓ Pass

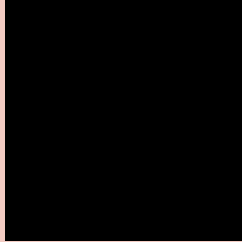
Large Text (above 18pt) WCAG AAA ✓ Pass

Any Text WCAG AAA ✓ Pass

If you want to check with other color combinations, try the [Color Contrast Checker](#).

# YIQ 214.6350, 26.1330, 5.4690

## Background



This preview shows how black text looks on a background with the YIQ color 214.6350, 26.1330, 5.4690.



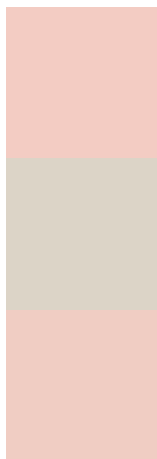
This preview shows how white text looks on a background with the YIQ color 214.6350, 26.1330,

5.4690.

# Color Blindness Simulation

Color vision deficiency is a very complex topic, and I could not describe the different causes any better than Wikipedia does, so if you want to learn more, you should check out their [article about color blindness](#).

## Dichromacy



### Original Color

214.6350, 26.1330, 5.4690

### Protanopia

212.9100, 8.9410, -2.3470

### Deuteranopia

214.3250, 24.0700, 4.3100



## Tritanopia

216.1650, 22.0050, 14.2050

# Trichromacy



## Original Color

214.6350, 26.1330, 5.4690

## Protanomaly

213.4270, 14.8550, 0.6070

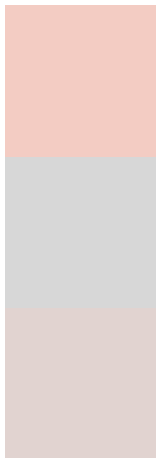
## Deuteranomaly

214.6240, 24.6660, 4.5220

## Tritanomaly

215.5410, 23.7020, 10.9820

# Monochromacy



## Original Color

214.6350, 26.1330, 5.4690

## Achromatopsia

215.0000, -0.0000, -0.0000

## Achromatomaly

214.8440, 9.3070, 2.0350

# CSS Examples

## Text

The CSS property to change the color of the text to YIQ 214.6350, 26.1330, 5.4690 is called "color". The color property can be set on classes, ids or directly on the HTML element.

This example shows how text in the color `rgb(243, 204, 195)` looks like.

```
.text, #text, p{  
    color:rgb(243, 204, 195)  
}
```

If you want to add a text shadow in that color use the text-shadow property, you can generate a text shadow directly with our [CSS Text Shadow Generator](#).

Here you see how black text with a 4 pixel rgb(243, 204, 195) colored shadow looks like.

```
.shadow{ text-shadow: 4px 4px 2px rgb(243, 204, 195) }
```

## Border

The CSS property to change the border of an element to YIQ 214.6350, 26.1330, 5.4690 is called "border". The border property can be set on classes, ids or directly on the HTML element.

This example shows the color as border, it can be applied via the CSS property "border" or "border-color".

```
.border, #border, table{ border:4px solid rgb(243, 204, 195) }
```



If only the border color should be changed use the property `border-color`.

```
.border{ border-color:rgb(243, 204, 195) }
```

If you want to add a box shadow in that color use:

Here you see how a box with a 4 pixel `rgb(243, 204, 195)` colored shadow looks like.

```
.boxshadow{ -moz-box-shadow:4px 4px 4px  
4px rgb(243, 204, 195); -webkit-box-  
shadow:4px 4px 4px 4px rgb(243, 204, 195);  
box-shadow:4px 4px 4px 4px rgb(243, 204,  
195) }
```

# Background

The CSS property to change the background color of an element to YIQ 214.6350, 26.1330, 5.4690 is called "background". The background property can be set on classes, ids or directly on the HTML element.

```
.background, #background, body{  
background: rgb(243, 204, 195) }
```

If only the background color should be changed can be used:

```
.background{ background-color: rgb(243,  
204, 195) }
```

This example shows the color as background, it is applied via the CSS property "background".

To optimize and compress your CSS code, you can use our [online CSS compressor and optimizer](#) based on csstidy. If you want to create a linear or radial gradient as background or border, check our [CSS Gradient Generator](#).

Hey! You found this booklet interesting? Support Converting Colors with the new Membership Option!

The pro membership hides all ads, plus gives you double the colors in the color bucket, and more awesome pro features!

**[Learn more, Memberships starting at \\$2.50/m!](#)**

**Follow me  
on Twitter!**

@ConvertingColor