

# Converting Colors

YIQ(214.7240, 9.7650, 4.7490)

Have a look what the booklet for  
YIQ(214.7240, 9.7650, 4.7490)  
contains.

<b>YIQ(214.7240, 9.7650, 4.7490)</b> .....	3
<b><i>Conversions</i></b> .....	4
<b><i>Details</i></b> .....	6
<b><i>Harmonies</i></b> .....	12
<b><i>Previews</i></b> .....	24
<b><i>Color Blindness Simulation</i></b> .....	28
<b><i>CSS Examples</i></b> .....	31

# Color

**YIQ(214.7240, 9.7650,  
4.7490)**

# Conversions

## Conversions Part 1

Format	Color
Hex	E3D1D4
RGB	227, 209, 212
RGB Percent	89%, 82%, 83%
CMY	0.1098, 0.1804, 0.1686
CMYK	0.00, 0.08, 0.07, 0.11
HSL	350°, 24%, 85%
HSV	350°, 8%, 89%
XYZ	66.3656, 66.6839, 71.6669
YIQ	214.7240, 9.7650, 4.7490

# Conversions

## Conversions Part 2

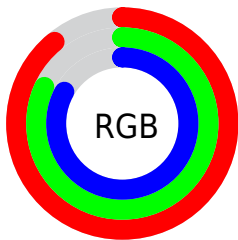
Format	Color
R <sub>Y</sub> B	227, 209, 212
Decimal	14930388
CIE Lab	85.34, 6.75, 0.76
CIE LCh	85, 6.794, 6.403
Yxy	66.6839, 0.3242, 0.3257
Android (android.graphics.Color)	4293120468 (0xFFE3D1D4)
YUV	214.7240, -1.3429, 10.7661
Hunter-Lab	81.6602, 2.1623, 5.1278

# Details

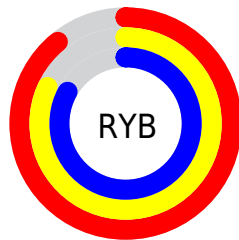
The YIQ color **214.7240, 9.7650, 4.7490** is a light color, and the websafe version is hex **CCCCCC**. A complement of this color would be **221.2760, -9.7650, -4.7490**, and the grayscale version is **215.0000, -0.0000, -0.0000**.

A 20% lighter version of the original color is **255.0000, -0.0000, -0.0000**, and **160.3110, 9.4900, 4.2260** is the 20% darker color. If you saturate the color by 10%, you get **199.0570, 22.1890, 10.8690**, and if you desaturate by 10%, it is **230.3910, -2.6590, -1.3710**.

# Distribution



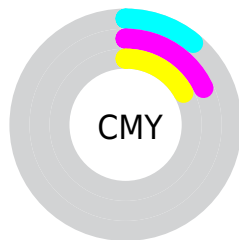
- Red (89%)
- Green (82%)
- Blue (83%)



- Red (89%)
- Yellow (82%)
- Blue (83%)



- Cyan (0%)
- Magenta (8%)
- Yellow (7%)
- Black (11%)



- Cyan (11%)
- Magenta (18%)
- Yellow (17%)

# Brightness & Saturation Gradients

These gradients show how the YIQ color 214.7240, 9.7650, 4.7490 changes by changing the brightness by 10 percent. The first figure shows a shift by +10% for each color and the second figure -10%.

Similar to the brightness gradients but the following saturation gradients show a change of the YIQ color 214.7240, 9.7650, 4.7490 by changing the saturation by 10% instead.



■ 214.7240, 9.7650,  
4.7490

■ 214.7240, 9.7650,  
4.7490

255.0000, -0.0000,  
-0.0000

■ 186.7240, 9.7650,  
4.7490

■ 160.3110, 9.4900,  
4.2260

■ 134.0120, 8.8940,  
4.0140

■ 108.7130, 8.2980,  
3.8020

■ 83.8270, 7.9770,  
4.1130

■ 61.4140, 7.7020,  
3.5900

■ 39.2290, 6.7850,

3.6890

■ 18.5280, 7.3810,  
3.9010

■ 0.0000, 0.0000,  
0.0000

■ 214.7240, 9.7650,  
4.7490

■ 214.7240, 9.7650,  
4.7490

■ 199.0570, 22.1890,  
10.8690

■ 230.3910, -2.6590,  
-1.3710

■ 183.9770, 34.3380,  
16.4660

■ 245.4710,  
-14.8080, -6.9680

■ 168.3100, 46.7620,  
22.5860

■ 246.6280,  
-16.6880, -5.9360

■ 152.6430, 59.1860,  
28.7060

■ 136.9760, 71.6100,  
34.8260

■ 122.0100, 83.4380,  
40.7340

■ 106.3430, 95.8620,  
46.8540

■ 90.6760, 108.2860,  
52.9740

■ 75.5960, 120.4350,  
58.5710

# Harmonies

## Analogous

The Analogous color harmony consists of three colors that are next to each other on the color wheel.



214.7990, 5.1800, 5.2440



214.7240, 9.7650, 4.7490



214.6270, 11.4160, 2.3600

# Triad

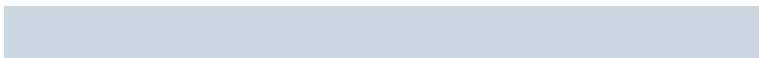
The Triadic color harmony groups three colors that are evenly spaced from another and form a triangle on the color wheel.



214.7240, 9.7650, 4.7490



212.1370, 0.8720, -4.7920



212.2530, -10.9580, 0.3540

# Complementary

The Complementary color scheme is a pair of colors which are on the opposite of each other on the color wheel.



214.7240, 9.7650, 4.7490



221.2760, -9.7650, -4.7490

# Split Complementary

Split-complementary colors differ from the complementary color scheme. The scheme consists of three colors, the original color and two neighbors of the complement color.



211.7750, -12.6080, -2.7840



214.7240, 9.7650, 4.7490



211.7880, -5.4550, -5.7670

# Square

The Square scheme is like the rectangle color scheme, but the four colors are evenly spaced on the color wheel.



214.7240, 9.7650, 4.7490



212.8280, 6.2360, -2.8840



211.2760, -9.7650, -4.7490



212.9870, -7.1530, 2.9830



# Rectangle

The Rectangle color scheme consists of four colors that form a rectangle on the color wheel.



214.7240, 9.7650, 4.7490



214.2740, 10.9120, 0.4800



211.2760, -9.7650, -4.7490



212.1280, -12.1040, -0.9040

# Sweetspot

The Sweet Spot groups the original color and five complimentary colors.



214.7240, 9.7650, 4.7490



251.6090, 2.6590, 1.3710



215.5370, 3.1620, 8.7780



125.8970, 1.7880, 0.6360



0.0000, 0.0000, 0.0000



128.0000, -0.0000, -0.0000



# Same Dimension

The Same Dimension uses a secret algorithm to generate beautiful new colors.



214.7240, 9.7650, 4.7490



237.9310, 13.6160, 6.5440



217.9040, 9.0780, 0.6780



106.8160, 6.5100, 3.1660



56.9410, 97.0540, 47.2780



16.2750, 27.5070, 13.6110

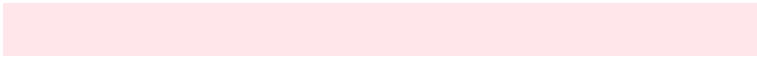


# Inverse Universe

The Inverse Universe completely reimagines the original color for something new.



214.7240, 9.7650, 4.7490



237.9310, 13.6160, 6.5440



218.0960, -9.0780, -0.6780



106.8160, 6.5100, 3.1660



56.9410, 97.0540, 47.2780

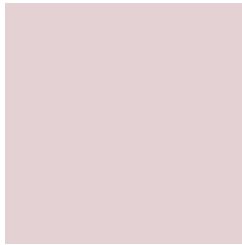


16.2750, 27.5070, 13.6110



# Previews

## White Background



This preview shows how the YIQ color 214.7240, 9.7650, 4.7490 looks on a white background.

## Color Contrast Check

Large Text (above 18pt) WCAG AA × Fail

Any Text WCAG AA × Fail

Large Text (above 18pt) WCAG AAA × Fail

Any Text WCAG AAA × Fail



# Black Background



This preview shows how the YIQ color 214.7240, 9.7650, 4.7490 looks on a black background.

## Color Contrast Check

Large Text (above 18pt) WCAG AA ✓ Pass

Any Text WCAG AA ✓ Pass

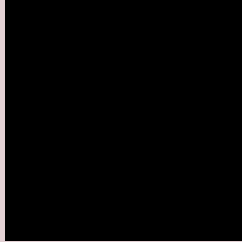
Large Text (above 18pt) WCAG AAA ✓ Pass

Any Text WCAG AAA ✓ Pass

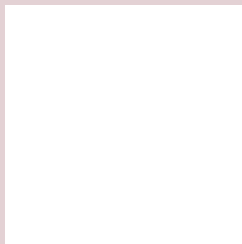
If you want to check with other color combinations, try the [Color Contrast Checker](#).

**YIQ 214.7240, 9.7650, 4.7490**

## **Background**



This preview shows how black text looks on a background with the YIQ color 214.7240, 9.7650, 4.7490.



This preview shows how white text looks on a background with the YIQ color 214.7240, 9.7650,

4.7490.

# Color Blindness Simulation

Color vision deficiency is a very complex topic, and I could not describe the different causes any better than Wikipedia does, so if you want to learn more, you should check out their [article about color blindness](#).

## Dichromacy



### Original Color

214.7240, 9.7650, 4.7490

### Protanopia

213.7230, 2.3380, 1.6820

### Deuteranopia

215.1700, 14.4410, 8.1130



## Tritanopia

215.4020, 7.9760, 9.6400

# Trichromacy



## Original Color

214.7240, 9.7650, 4.7490

## Protanomaly

214.2180, 5.3180, 2.7420

## Deuteranomaly

214.8600, 12.3780, 6.9540

## Tritanomaly

215.2340, 8.3890, 7.6610

# Monochromacy



## Original Color

214.7240, 9.7650, 4.7490

## Achromatopsia

215.0000, -0.0000, -0.0000

## Achromatomaly

214.9080, 3.2550, 1.5830

# CSS Examples

## Text

The CSS property to change the color of the text to YIQ 214.7240, 9.7650, 4.7490 is called "color". The color property can be set on classes, ids or directly on the HTML element.

This example shows how text in the color `rgb(227, 209, 212)` looks like.

```
.text, #text, p{  
    color:rgb(227, 209, 212)  
}
```

If you want to add a text shadow in that color use the text-shadow property, you can generate a text shadow directly with our [CSS Text Shadow Generator](#).

Here you see how black text with a 4 pixel rgb(227, 209, 212) colored shadow looks like.

```
.shadow{ text-shadow: 4px 4px 2px rgb(227, 209, 212) }
```

## Border

The CSS property to change the border of an element to YIQ 214.7240, 9.7650, 4.7490 is called "border". The border property can be set on classes, ids or directly on the HTML element.

This example shows the color as border, it can be applied via the CSS property "border" or "border-color".

```
.border, #border, table{ border:4px solid rgb(227, 209, 212) }
```



If only the border color should be changed use the property border-color.

```
.border{ border-color:rgb(227, 209, 212) }
```

If you want to add a box shadow in that color use:

Here you see how a box with a 4 pixel rgb(227, 209, 212) colored shadow looks like.

```
.boxshadow{ -moz-box-shadow:4px 4px 4px  
4px rgb(227, 209, 212); -webkit-box-  
shadow:4px 4px 4px 4px rgb(227, 209, 212);  
box-shadow:4px 4px 4px 4px rgb(227, 209,  
212) }
```

# Background

The CSS property to change the background color of an element to YIQ 214.7240, 9.7650, 4.7490 is called "background". The background property can be set on classes, ids or directly on the HTML element.

```
.background, #background, body{  
background: rgb(227, 209, 212) }
```

If only the background color should be changed can be used:

```
.background{ background-color: rgb(227,  
209, 212) }
```

This example shows the color as background, it is applied via the CSS property "background".

To optimize and compress your CSS code, you can use our [online CSS compressor and optimizer](#) based on csstidy. If you want to create a linear or radial gradient as background or border, check our [CSS Gradient Generator](#).

Hey! You found this booklet interesting? Support Converting Colors with the new Membership Option!

The pro membership hides all ads, plus gives you double the colors in the color bucket, and more awesome pro features!

**[Learn more, Memberships starting at \\$2.50/m!](#)**

**Follow me  
on Twitter!**

@ConvertingColor