

Converting Colors

YIQ(214.7740, 15.4960, 5.5120)

Have a look what the booklet for
YIQ(214.7740, 15.4960, 5.5120)
contains.

YIQ(214.7740, 15.4960, 5.5120)	3
<i>Conversions</i>	4
<i>Details</i>	6
<i>Harmonies</i>	12
<i>Previews</i>	24
<i>Color Blindness Simulation</i>	28
<i>CSS Examples</i>	31

Color

**YIQ(214.7740, 15.4960,
5.5120)**

Conversions

Conversions Part 1

Format	Color
Hex	E9CFCF
RGB	233, 207, 207
RGB Percent	91%, 81%, 81%
CMY	0.0862, 0.1883, 0.1882
CMYK	0.00, 0.11, 0.11, 0.09
HSL	360°, 37%, 86%
HSV	360°, 11%, 91%
XYZ	67.1840, 66.4524, 68.3272
YIQ	214.7740, 15.4960, 5.5120

Conversions

Conversions Part 2

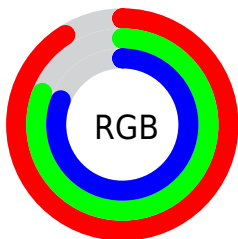
Format	Color
R _Y B	233, 207, 207
Decimal	15323087
CIE Lab	85.23, 9.07, 3.30
CIE LCh	85, 9.655, 19.991
Yxy	66.4524, 0.3327, 0.3290
Android (android.graphics.Color)	4293513167 (0xFFE9CFCF)
YUV	214.7740, -3.8326, 15.9842
Hunter-Lab	81.5183, 4.4551, 7.3671

Details

The YIQ color **214.7740, 15.4960, 5.5120** is a light color, and the websafe version is hex **FFCCCC**. A complement of this color would be **225.2260, -15.4960, -5.5120**, and the grayscale version is **215.0000, -0.0000, -0.0000**.

A 20% lighter version of the original color is **255.0000, -0.0000, -0.0000**, and **160.1760, 14.3040, 5.0880** is the 20% darker color. If you saturate the color by 10%, you get **198.6510, 29.2040, 10.3880**, and if you desaturate by 10%, it is **230.8970, 1.7880, 0.6360**.

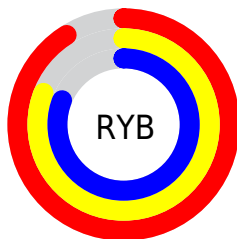
Distribution



Red (91%)

Green (81%)

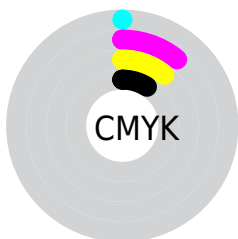
Blue (81%)



Red (91%)

Yellow (81%)

Blue (81%)

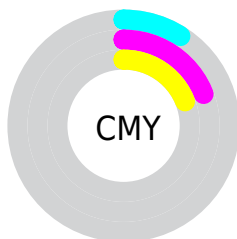


Cyan (0%)

Magenta (11%)

Yellow (11%)

Black (9%)



Cyan (9%)

Magenta (19%)

Yellow (19%)

Brightness & Saturation Gradients

These gradients show how the YIQ color 214.7740, 15.4960, 5.5120 changes by changing the brightness by 10 percent. The first figure shows a shift by +10% for each color and the second figure -10%.

Similar to the brightness gradients but the following saturation gradients show a change of the YIQ color 214.7740, 15.4960, 5.5120 by changing the saturation by 10% instead.

■ 214.7740, 15.4960,
5.5120

■ 214.7740, 15.4960,
5.5120

255.0000, -0.0000,
-0.0000

■ 186.8880, 15.1750,
5.8230

■ 160.1760, 14.3040,
5.0880

■ 133.8770, 13.7080,
4.8760

■ 108.5780, 13.1120,
4.6640

■ 84.2790, 12.5160,
4.4520

■ 60.9800, 11.9200,
4.2400

■ 38.7950, 11.0030,

4.3390

■ 17.8660, 12.2410,
3.9290

■ 0.0000, 0.0000,
0.0000

■ 214.7740, 15.4960,
5.5120

■ 214.7740, 15.4960,
5.5120

■ 198.6510, 29.2040,
10.3880

■ 230.8970, 1.7880,
0.6360

■ 181.8270, 43.5080,
15.4760

■ 247.7210,
-12.5160, -4.4520

■ 165.7040, 57.2160,
20.3520

■ 248.4220,
-13.1120, -4.6640

■ 149.5810, 70.9240,
25.2280

■ 132.8710, 84.9070,
30.6270

■ 116.6340, 98.9360,
35.1920

■ 100.5110,
112.6440, 40.0680

■ 84.3880, 126.3520,
44.9440

■ 69.6670, 138.8680,
49.3960

Harmonies

Analogous

The Analogous color harmony consists of three colors that are next to each other on the color wheel.



214.9030, 10.8190, 7.6750



214.7740, 15.4960, 5.5120



214.4380, 16.3220, 1.5540

Triad

The Triadic color harmony groups three colors that are evenly spaced from another and form a triangle on the color wheel.



214.7740, 15.4960, 5.5120



210.9900, -3.2080, -7.9440



212.3390, -14.0760, 1.7960

Complementary

The Complementary color scheme is a pair of colors which are on the opposite of each other on the color wheel.



214.7740, 15.4960, 5.5120



225.2260, -15.4960, -5.5120

Split Complementary

Split-complementary colors differ from the complementary color scheme. The scheme consists of three colors, the original color and two neighbors of the complement color.



210.9640, -17.5140, -1.9780



214.7740, 15.4960, 5.5120



210.0970, -10.8190, -7.6750

Square

The Square scheme is like the rectangle color scheme, but the four colors are evenly spaced on the color wheel.



214.7740, 15.4960, 5.5120



211.9480, 5.7780, -5.5980



210.0410, -16.4130, -5.4130



213.7530, -6.3740, 5.3860

Rectangle

The Rectangle color scheme consists of four colors that form a rectangle on the color wheel.



214.7740, 15.4960, 5.5120



213.4870, 14.6260, -0.7500



210.0410, -16.4130, -5.4130



211.9150, -15.8180, 0.3260

Sweetspot

The Sweet Spot groups the original color and five complimentary colors.



214.7740, 15.4960, 5.5120



249.3920, 4.7680, 1.6960



217.7380, 7.1500, 13.5980



123.7940, 3.5760, 1.2720



0.0000, 0.0000, 0.0000



128.0000, -0.0000, -0.0000

Same Dimension

The Same Dimension uses a secret algorithm to generate beautiful new colors.



214.7740, 15.4960, 5.5120



231.8670, 19.6680, 6.9960



222.4050, 11.9210, -1.2870



109.2890, 6.5560, 2.3320



54.1190, 107.8760, 38.3720



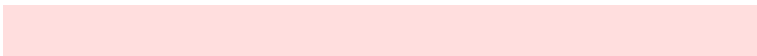
16.1460, 32.1840, 11.4480

Inverse Universe

The Inverse Universe completely reimagines the original color for something new.



214.7740, 15.4960, 5.5120



231.8670, 19.6680, 6.9960



217.5950, -11.9210, 1.2870



109.2890, 6.5560, 2.3320



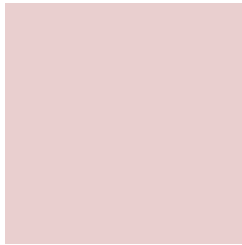
54.1190, 107.8760, 38.3720



16.1460, 32.1840, 11.4480

Previews

White Background



This preview shows how the YIQ color 214.7740, 15.4960, 5.5120 looks on a white background.

Color Contrast Check

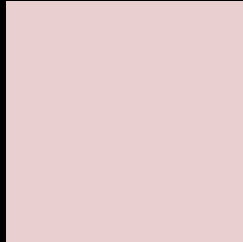
Large Text (above 18pt) WCAG AA × Fail

Any Text WCAG AA × Fail

Large Text (above 18pt) WCAG AAA × Fail

Any Text WCAG AAA × Fail

Black Background



This preview shows how the YIQ color 214.7740, 15.4960, 5.5120 looks on a black background.

Color Contrast Check

Large Text (above 18pt) WCAG AA ✓ Pass

Any Text WCAG AA ✓ Pass

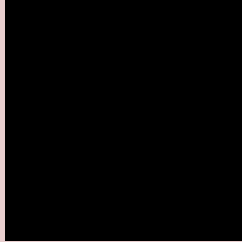
Large Text (above 18pt) WCAG AAA ✓ Pass

Any Text WCAG AAA ✓ Pass

If you want to check with other color combinations, try the [Color Contrast Checker](#).

YIQ 214.7740, 15.4960, 5.5120

Background



This preview shows how black text looks on a background with the YIQ color 214.7740, 15.4960, 5.5120.



This preview shows how white text looks on a background with the YIQ color 214.7740, 15.4960,

Color Blindness Simulation

Color vision deficiency is a very complex topic, and I could not describe the different causes any better than Wikipedia does, so if you want to learn more, you should check out their [article about color blindness](#).

Dichromacy



Original Color

214.7740, 15.4960, 5.5120

Protanopia

213.2670, 3.6220, 0.4380

Deuteranopia

215.0840, 17.5590, 6.6710



Tritanopia

215.7940, 12.7440, 11.3360

Trichromacy



Original Color

214.7740, 15.4960, 5.5120

Protanomaly

213.7730, 8.0690, 2.4450

Deuteranomaly

214.7850, 16.9630, 6.4590

Tritanomaly

215.5120, 13.4780, 9.0460

Monochromacy



Original Color

214.7740, 15.4960, 5.5120

Achromatopsia

215.0000, -0.0000, -0.0000

Achromatomaly

214.9900, 5.9600, 2.1200

CSS Examples

Text

The CSS property to change the color of the text to YIQ 214.7740, 15.4960, 5.5120 is called "color". The color property can be set on classes, ids or directly on the HTML element.

This example shows how text in the color `rgb(233, 207, 207)` looks like.

```
.text, #text, p{  
    color:rgb(233, 207, 207)  
}
```

If you want to add a text shadow in that color use the text-shadow property, you can generate a text shadow directly with our [CSS Text Shadow Generator](#).

Here you see how black text with a 4 pixel rgb(233, 207, 207) colored shadow looks like.

```
.shadow{ text-shadow: 4px 4px 2px rgb(233, 207, 207) }
```

Border

The CSS property to change the border of an element to YIQ 214.7740, 15.4960, 5.5120 is called "border". The border property can be set on classes, ids or directly on the HTML element.

This example shows the color as border, it can be applied via the CSS property "border" or "border-color".

```
.border, #border, table{ border:4px solid rgb(233, 207, 207) }
```


If only the border color should be changed use the property border-color.

```
.border{ border-color:rgb(233, 207, 207) }
```

If you want to add a box shadow in that color use:

Here you see how a box with a 4 pixel rgb(233, 207, 207) colored shadow looks like.

```
.boxshadow{ -moz-box-shadow:4px 4px 4px  
4px rgb(233, 207, 207); -webkit-box-  
shadow:4px 4px 4px 4px rgb(233, 207, 207);  
box-shadow:4px 4px 4px 4px rgb(233, 207,  
207) }
```

Background

The CSS property to change the background color of an element to YIQ 214.7740, 15.4960, 5.5120 is called "background". The background property can be set on classes, ids or directly on the HTML element.

```
.background, #background, body{  
background: rgb(233, 207, 207) }
```

If only the background color should be changed can be used:

```
.background{ background-color: rgb(233,  
207, 207) }
```

This example shows the color as background, it is applied via the CSS property "background".

To optimize and compress your CSS code, you can use our [online CSS compressor and optimizer](#) based on csstidy. If you want to create a linear or radial gradient as background or border, check our [CSS Gradient Generator](#).

Hey! You found this booklet interesting? Support Converting Colors with the new Membership Option!

The pro membership hides all ads, plus gives you double the colors in the color bucket, and more awesome pro features!

[Learn more, Memberships starting at \\$2.50/m!](#)

**Follow me
on Twitter!**

@ConvertingColor