

Converting Colors

YIQ(214.7760, 21.1820, 1.5820)

Have a look what the booklet for
YIQ(214.7760, 21.1820, 1.5820)
contains.

YIQ(214.7760, 21.1820, 1.5820)	3
<i>Conversions</i>	4
<i>Details</i>	6
<i>Harmonies</i>	12
<i>Previews</i>	24
<i>Color Blindness Simulation</i>	28
<i>CSS Examples</i>	31

Color

**YIQ(214.7760, 21.1820,
1.5820)**

Conversions

Conversions Part 1

Format	Color
Hex	ECD0C2
RGB	236, 208, 194
RGB Percent	93%, 82%, 76%
CMY	0.0744, 0.1843, 0.2391
CMYK	0.00, 0.12, 0.18, 0.07
HSL	20°, 53%, 84%
HSV	20°, 18%, 93%
XYZ	66.8903, 66.8375, 60.4286
YIQ	214.7760, 21.1820, 1.5820

Conversions

Conversions Part 2

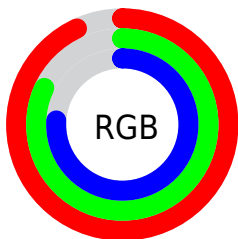
Format	Color
RYB	236, 215, 194
Decimal	15519938
CIELab	85.42, 7.58, 10.51
CIELCh	85, 12.957, 54.184
Yxy	66.8375, 0.3445, 0.3442
Android (android.graphics.Color)	4293710018 (0xFFECD0C2)
YUV	214.7760, -10.2426, 18.6134
Hunter-Lab	81.7542, 2.9766, 13.4038

Details

The YIQ color $214.7760, 21.1820, 1.5820$ is a light color, and the websafe version is hex `FFCCCC`. A complement of this color would be $215.2240, -21.1820, -1.5820$, and the grayscale version is $215.0000, -0.0000, -0.0000$.

A 20% lighter version of the original color is $254.4300, 1.6050, -1.5550$, and $160.1780, 19.9900, 1.1580$ is the 20% darker color. If you saturate the color by 10%, you get $202.6480, 33.2860, 2.4860$, and if you desaturate by 10%, it is $226.9040, 9.0780, 0.6780$.

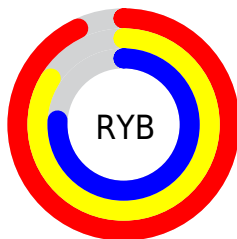
Distribution



Red (93%)

Green (82%)

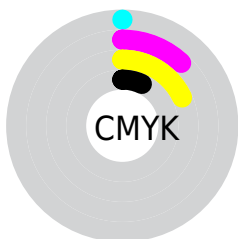
Blue (76%)



Red (93%)

Yellow (84%)

Blue (76%)

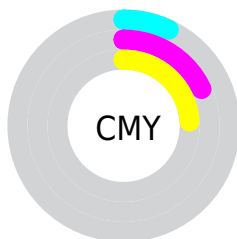


Cyan (0%)

Magenta (12%)

Yellow (18%)

Black (7%)



Cyan (7%)

Magenta (18%)

Yellow (24%)

Brightness & Saturation Gradients

These gradients show how the YIQ color 214.7760, 21.1820, 1.5820 changes by changing the brightness by 10 percent. The first figure shows a shift by +10% for each color and the second figure -10%.

Similar to the brightness gradients but the following saturation gradients show a change of the YIQ color 214.7760, 21.1820, 1.5820 by changing the saturation by 10% instead.

214.7760, 21.1820,
1.5820

214.7760, 21.1820,
1.5820

255.0000, -0.0000,
-0.0000

186.8900, 20.8610,
1.8930

254.5440, 1.2840,
-1.2440

160.1780, 19.9900,
1.1580

133.9930, 19.0730,
1.2570

108.6940, 18.4770,
1.0450

84.2100, 16.9640,
0.9320

61.0250, 16.0470,
1.0310

38.5410, 14.5340,

0.9180

■ 17.4980, 16.0930,
0.1970

■ 0.0000, 0.0000,
0.0000

■ 214.7760, 21.1820,
1.5820

■ 214.7760, 21.1820,
1.5820

■ 202.6480, 33.2860,
2.4860

■ 226.9040, 9.0780,
0.6780

■ 190.6340, 45.0690,
3.7010

■ 238.3310, -2.4300,
-0.0140

■ 179.0930, 56.8980,
4.0820

■ 249.3190,
-11.3240, -4.0280

■ 167.0790, 68.6810,
5.2970

■ 154.9510, 80.7850,
6.2010

■ 142.8230, 92.8890,
7.1050

■ 131.3960,
104.3970, 7.7970

■ 119.2680,
116.5010, 8.7010

■ 116.9370,
118.9310, 8.7150

Harmonies

Analogous

The Analogous color harmony consists of three colors that are next to each other on the color wheel.



215.9380, 20.9060, 6.5860



214.7760, 21.1820, 1.5820



213.5640, 15.7270, -4.1850

Triad

The Triadic color harmony groups three colors that are evenly spaced from another and form a triangle on the color wheel.



214.7760, 21.1820, 1.5820



209.6940, -17.0540, -10.3180



214.4480, -6.8330, 8.1990

Complementary

The Complementary color scheme is a pair of colors which are on the opposite of each other on the color wheel.



214.7760, 21.1820, 1.5820



215.2240, -21.1820, -1.5820

Split Complementary

Split-complementary colors differ from the complementary color scheme. The scheme consists of three colors, the original color and two neighbors of the complement color.



212.4250, -17.1940, 3.2380



214.7760, 21.1820, 1.5820



209.8660, -23.2900, -7.4340

Square

The Square scheme is like the rectangle color scheme, but the four colors are evenly spaced on the color wheel.



214.7760, 21.1820, 1.5820



210.7400, -5.5000, -10.4600



210.7290, -24.1620, -2.6420



215.3740, 5.1790, 10.7710

Rectangle

The Rectangle color scheme consists of four colors that form a rectangle on the color wheel.



214.7760, 21.1820, 1.5820



212.1610, 9.4920, -6.8280



210.7290, -24.1620, -2.6420



214.2410, -10.6840, 6.4040

Sweetspot

The Sweet Spot groups the original color and five complimentary colors.



214.7760, 21.1820, 1.5820



248.2350, 6.6480, 0.6640



209.8640, 15.7230, 17.9230



123.5660, 4.2180, 0.6500



0.0000, 0.0000, 0.0000



128.0000, -0.0000, -0.0000

Same Dimension

The Same Dimension uses a secret algorithm to generate beautiful new colors.



214.7760, 21.1820, 1.5820



227.7120, 27.2340, 2.0340



226.5160, 15.6820, -8.8780



111.0500, 5.7310, 0.7630



89.3390, 91.3760, 6.9920



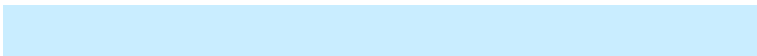
26.7120, 27.2340, 2.0340

Inverse Universe

The Inverse Universe completely reimagines the original color for something new.



215.2240, -21.1820, -1.5820



228.2880, -27.2340, -2.0340



203.4840, -15.6820, 8.8780



111.3630, -5.4560, -0.2400



91.6610, -91.3760, -6.9920



27.2880, -27.2340, -2.0340

Previews

White Background



This preview shows how the YIQ color 214.7760, 21.1820, 1.5820 looks on a white background.

Color Contrast Check

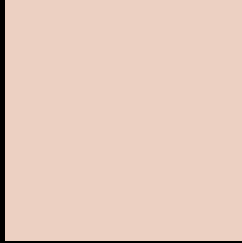
Large Text (above 18pt) WCAG AA × Fail

Any Text WCAG AA × Fail

Large Text (above 18pt) WCAG AAA × Fail

Any Text WCAG AAA × Fail

Black Background



This preview shows how the YIQ color 214.7760, 21.1820, 1.5820 looks on a black background.

Color Contrast Check

Large Text (above 18pt) WCAG AA ✓ Pass

Any Text WCAG AA ✓ Pass

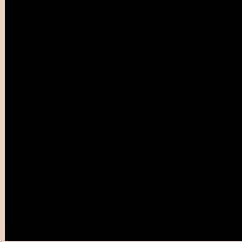
Large Text (above 18pt) WCAG AAA ✓ Pass

Any Text WCAG AAA ✓ Pass

If you want to check with other color combinations, try the [Color Contrast Checker](#).

YIQ 214.7760, 21.1820, 1.5820

Background



This preview shows how black text looks on a background with the YIQ color 214.7760, 21.1820, 1.5820.



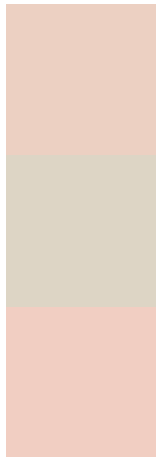
This preview shows how white text looks on a background with the YIQ color 214.7760, 21.1820,

1.5820.

Color Blindness Simulation

Color vision deficiency is a very complex topic, and I could not describe the different causes any better than Wikipedia does, so if you want to learn more, you should check out their [article about color blindness](#).

Dichromacy



Original Color

214.7760, 21.1820, 1.5820

Protanopia

213.5680, 9.9040, -3.2800

Deuteranopia

215.0970, 24.7120, 3.6880



Tritanopia

216.2890, 15.7240, 12.3960

Trichromacy



Original Color

214.7760, 21.1820, 1.5820

Protanomaly

213.7750, 13.7550, -1.4850

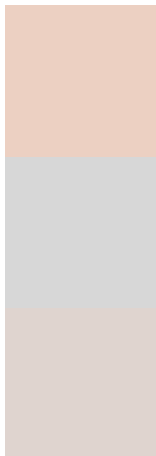
Deuteranomaly

215.0860, 23.2450, 2.7410

Tritanomaly

215.5510, 17.7420, 8.8620

Monochromacy



Original Color

214.7760, 21.1820, 1.5820

Achromatopsia

215.0000, -0.0000, -0.0000

Achromatomaly

214.7190, 8.1610, 0.7770

CSS Examples

Text

The CSS property to change the color of the text to YIQ 214.7760, 21.1820, 1.5820 is called "color". The color property can be set on classes, ids or directly on the HTML element.

This example shows how text in the color `rgb(236, 208, 194)` looks like.

```
.text, #text, p{  
    color:rgb(236, 208, 194)  
}
```

If you want to add a text shadow in that color use the text-shadow property, you can generate a text shadow directly with our [CSS Text Shadow Generator](#).

Here you see how black text with a 4 pixel rgb(236, 208, 194) colored shadow looks like.

```
.shadow{ text-shadow: 4px 4px 2px rgb(236, 208, 194) }
```

Border

The CSS property to change the border of an element to YIQ 214.7760, 21.1820, 1.5820 is called "border". The border property can be set on classes, ids or directly on the HTML element.

This example shows the color as border, it can be applied via the CSS property "border" or "border-color".

```
.border, #border, table{ border:4px solid rgb(236, 208, 194) }
```


If only the border color should be changed use the property `border-color`.

```
.border{ border-color:rgb(236, 208, 194) }
```

If you want to add a box shadow in that color use:

Here you see how a box with a 4 pixel `rgb(236, 208, 194)` colored shadow looks like.

```
.boxshadow{ -moz-box-shadow:4px 4px 4px  
4px rgb(236, 208, 194); -webkit-box-  
shadow:4px 4px 4px 4px rgb(236, 208, 194);  
box-shadow:4px 4px 4px 4px rgb(236, 208,  
194) }
```

Background

The CSS property to change the background color of an element to YIQ 214.7760, 21.1820, 1.5820 is called "background". The background property can be set on classes, ids or directly on the HTML element.

```
.background, #background, body{  
background: rgb(236, 208, 194) }
```

If only the background color should be changed can be used:

```
.background{ background-color: rgb(236,  
208, 194) }
```

This example shows the color as background, it is applied via the CSS property "background".

To optimize and compress your CSS code, you can use our [online CSS compressor and optimizer](#) based on csstidy. If you want to create a linear or radial gradient as background or border, check our [CSS Gradient Generator](#).

Hey! You found this booklet interesting? Support Converting Colors with the new Membership Option!

The pro membership hides all ads, plus gives you double the colors in the color bucket, and more awesome pro features!

[Learn more, Memberships starting at \\$2.50/m!](#)

**Follow me
on Twitter!**

@ConvertingColor