

Converting Colors

YIQ(215.0250, 16.0470, 1.0310)

Have a look what the booklet for
YIQ(215.0250, 16.0470, 1.0310)
contains.

YIQ(215.0250, 16.0470, 1.0310)	3
<i>Conversions</i>	4
<i>Details</i>	6
<i>Harmonies</i>	12
<i>Previews</i>	24
<i>Color Blindness Simulation</i>	28
<i>CSS Examples</i>	31

Color

**YIQ(215.0250, 16.0470,
1.0310)**

Conversions

Conversions Part 1

Format	Color
Hex	E7D2C7
RGB	231, 210, 199
RGB Percent	91%, 82%, 78%
CMY	0.0941, 0.1765, 0.2195
CMYK	0.00, 0.09, 0.14, 0.09
HSL	21°, 40%, 84%
HSV	21°, 14%, 91%
XYZ	66.3139, 67.2039, 63.5206
YIQ	215.0250, 16.0470, 1.0310

Conversions

Conversions Part 2

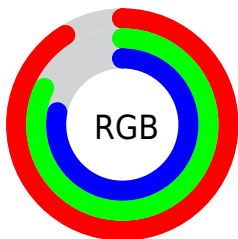
Format	Color
R _Y B	231, 216, 199
Decimal	15192775
CIE Lab	85.61, 5.50, 8.07
CIE LCh	86, 9.768, 55.704
Yxy	67.2039, 0.3366, 0.3411
Android (android.graphics.Color)	4293382855 (0xFFE7D2C7)
YUV	215.0250, -7.9003, 14.0101
Hunter-Lab	81.9780, 0.9312, 11.4438

Details

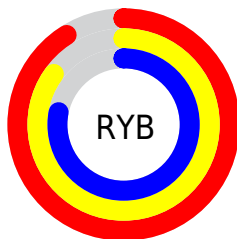
The YIQ color **215.0250, 16.0470, 1.0310** is a light color, and the websafe version is hex **CCCCCC**. A complement of this color would be **214.9750, -16.0470, -1.0310**, and the grayscale version is **215.0000, -0.0000, -0.0000**.

A 20% lighter version of the original color is **255.0000, -0.0000, -0.0000**, and **160.4270, 14.8550, 0.6070** is the 20% darker color. If you saturate the color by 10%, you get **203.5980, 27.5550, 1.7230**, and if you desaturate by 10%, it is **226.4520, 4.5390, 0.3390**.

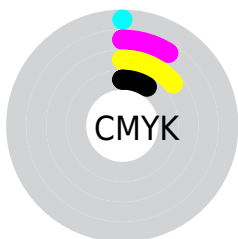
Distribution



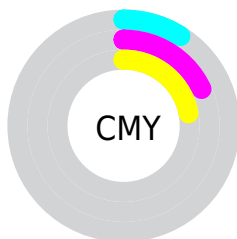
- Red (91%)
- Green (82%)
- Blue (78%)



- Red (91%)
- Yellow (85%)
- Blue (78%)



- Cyan (0%)
- Magenta (9%)
- Yellow (14%)
- Black (9%)



- Cyan (9%)
- Magenta (18%)
- Yellow (22%)

Brightness & Saturation Gradients

These gradients show how the YIQ color 215.0250, 16.0470, 1.0310 changes by changing the brightness by 10 percent. The first figure shows a shift by +10% for each color and the second figure -10%.

Similar to the brightness gradients but the following saturation gradients show a change of the YIQ color 215.0250, 16.0470, 1.0310 by changing the saturation by 10% instead.

■ 215.0250, 16.0470,
1.0310

■ 215.0250, 16.0470,
1.0310

255.0000, -0.0000,
-0.0000

■ 187.1390, 15.7260,
1.3420

■ 160.4270, 14.8550,
0.6070

■ 134.2420, 13.9380,
0.7060

■ 108.3560, 13.6170,
1.0170

■ 84.0570, 13.0210,
0.8050

■ 60.8720, 12.1040,
0.9040

■ 39.2740, 10.9120,

0.4800

■ 18.1880, 14.0300,
-0.9620

■ 0.0000, 0.0000,
0.0000

■ 215.0250, 16.0470,
1.0310

■ 215.0250, 16.0470,
1.0310

■ 203.5980, 27.5550,
1.7230

■ 226.4520, 4.5390,
0.3390

■ 192.1710, 39.0630,
2.4150

■ 237.8790, -6.9690,
-0.3530

■ 180.1570, 50.8460,
3.6300

■ 247.8240,
-14.3040, -5.0880

■ 168.7300, 62.3540,
4.3220

■ 157.3030, 73.8620,
5.0140

■ 145.7620, 85.6910,
5.3950

■ 134.3350, 97.1990,
6.0870

■ 122.9080,
108.7070, 6.7790

■ 115.4420,
115.9510, 7.6550

Harmonies

Analogous

The Analogous color harmony consists of three colors that are next to each other on the color wheel.



215.5460, 16.1380, 4.8900



215.0250, 16.0470, 1.0310



214.0520, 11.4170, -3.1670

Triad

The Triadic color harmony groups three colors that are evenly spaced from another and form a triangle on the color wheel.



215.0250, 16.0470, 1.0310



211.3140, -12.9280, -8.0000



214.7640, -4.9070, 6.3330

Complementary

The Complementary color scheme is a pair of colors which are on the opposite of each other on the color wheel.



215.0250, 16.0470, 1.0310



214.9750, -16.0470, -1.0310

Split Complementary

Split-complementary colors differ from the complementary color scheme. The scheme consists of three colors, the original color and two neighbors of the complement color.



213.3500, -12.6090, 2.7430



215.0250, 16.0470, 1.0310



210.9700, -17.6510, -5.0030

Square

The Square scheme is like the rectangle color scheme, but the four colors are evenly spaced on the color wheel.



215.0250, 16.0470, 1.0310



211.5060, -4.7210, -8.0570



212.0780, -17.8350, -1.6670



215.4940, 4.7210, 8.0570

Rectangle

The Rectangle color scheme consists of four colors that form a rectangle on the color wheel.



215.0250, 16.0470, 1.0310



213.4320, 7.2910, -5.4850



212.0780, -17.8350, -1.6670



214.2690, -7.8870, 5.2730

Sweetspot

The Sweet Spot groups the original color and five complimentary colors.



215.0250, 16.0470, 1.0310



249.7510, 5.1350, 0.5510



210.9620, 12.3310, 13.3150



124.2670, 3.6220, 0.4380



0.0000, 0.0000, 0.0000



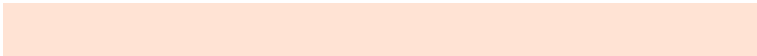
128.0000, -0.0000, -0.0000

Same Dimension

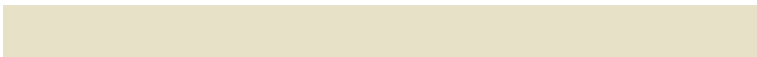
The Same Dimension uses a secret algorithm to generate beautiful new colors.



215.0250, 16.0470, 1.0310



233.6620, 21.5030, 1.2710



224.4170, 11.6470, -7.3370



108.9360, 6.0520, 0.4520



89.3280, 89.9090, 6.0450



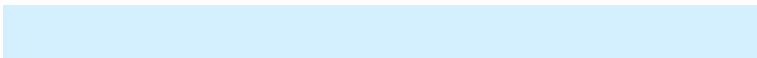
25.2280, 25.7210, 1.9210

Inverse Universe

The Inverse Universe completely reimagines the original color for something new.



214.9750, -16.0470, -1.0310



233.3380, -21.5030, -1.2710



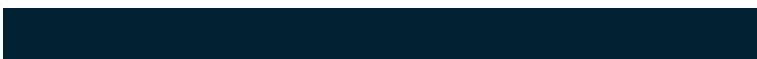
205.5830, -11.6470, 7.3370



109.0640, -6.0520, -0.4520



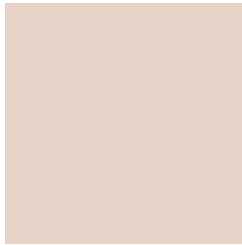
89.0850, -89.6340, -5.5220



25.7720, -25.7210, -1.9210

Previews

White Background



This preview shows how the YIQ color 215.0250, 16.0470, 1.0310 looks on a white background.

Color Contrast Check

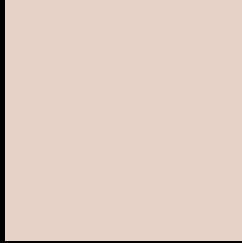
Large Text (above 18pt) WCAG AA × Fail

Any Text WCAG AA × Fail

Large Text (above 18pt) WCAG AAA × Fail

Any Text WCAG AAA × Fail

Black Background



This preview shows how the YIQ color 215.0250, 16.0470, 1.0310 looks on a black background.

Color Contrast Check

Large Text (above 18pt) WCAG AA ✓ Pass

Any Text WCAG AA ✓ Pass

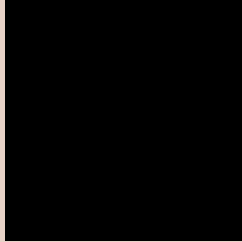
Large Text (above 18pt) WCAG AAA ✓ Pass

Any Text WCAG AAA ✓ Pass

If you want to check with other color combinations, try the [Color Contrast Checker](#).

YIQ 215.0250, 16.0470, 1.0310

Background



This preview shows how black text looks on a background with the YIQ color 215.0250, 16.0470, 1.0310.

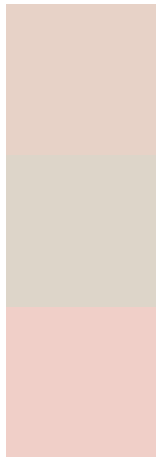


This preview shows how white text looks on a background with the YIQ color 215.0250, 16.0470,

Color Blindness Simulation

Color vision deficiency is a very complex topic, and I could not describe the different causes any better than Wikipedia does, so if you want to learn more, you should check out their [article about color blindness](#).

Dichromacy



Original Color

215.0250, 16.0470, 1.0310

Protanopia

214.0240, 8.6200, -2.0360

Deuteranopia

216.0690, 21.9150, 4.8190



Tritanopia

216.3100, 11.2310, 11.2230

Trichromacy



Original Color

215.0250, 16.0470, 1.0310

Protanomaly

214.5190, 11.6000, -0.9760

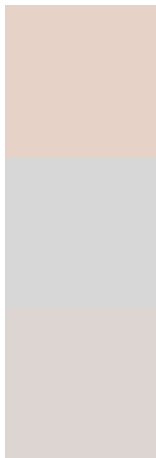
Deuteranomaly

215.7590, 19.8520, 3.6600

Tritanomaly

215.5720, 13.2490, 7.6890

Monochromacy



Original Color

215.0250, 16.0470, 1.0310

Achromatopsia

215.0000, -0.0000, -0.0000

Achromatomaly

214.9360, 6.0520, 0.4520

CSS Examples

Text

The CSS property to change the color of the text to YIQ 215.0250, 16.0470, 1.0310 is called "color". The color property can be set on classes, ids or directly on the HTML element.

This example shows how text in the color `rgb(231, 210, 199)` looks like.

```
.text, #text, p{  
    color:rgb(231, 210, 199)  
}
```

If you want to add a text shadow in that color use the text-shadow property, you can generate a text shadow directly with our [CSS Text Shadow Generator](#).

Here you see how black text with a 4 pixel rgb(231, 210, 199) colored shadow looks like.

```
.shadow{ text-shadow: 4px 4px 2px rgb(231, 210, 199) }
```

Border

The CSS property to change the border of an element to YIQ 215.0250, 16.0470, 1.0310 is called "border". The border property can be set on classes, ids or directly on the HTML element.

This example shows the color as border, it can be applied via the CSS property "border" or "border-color".

```
.border, #border, table{ border:4px solid rgb(231, 210, 199) }
```


If only the border color should be changed use the property `border-color`.

```
.border{ border-color:rgb(231, 210, 199) }
```

If you want to add a box shadow in that color use:

Here you see how a box with a 4 pixel `rgb(231, 210, 199)` colored shadow looks like.

```
.boxshadow{ -moz-box-shadow:4px 4px 4px 4px rgb(231, 210, 199); -webkit-box-shadow:4px 4px 4px 4px rgb(231, 210, 199); box-shadow:4px 4px 4px 4px rgb(231, 210, 199) }
```

Background

The CSS property to change the background color of an element to YIQ 215.0250, 16.0470, 1.0310 is called "background". The background property can be set on classes, ids or directly on the HTML element.

```
.background, #background, body{  
background: rgb(231, 210, 199) }
```

If only the background color should be changed can be used:

```
.background{ background-color: rgb(231,  
210, 199) }
```

This example shows the color as background, it is applied via the CSS property "background".

To optimize and compress your CSS code, you can use our [online CSS compressor and optimizer](#) based on csstidy. If you want to create a linear or radial gradient as background or border, check our [CSS Gradient Generator](#).

Hey! You found this booklet interesting? Support Converting Colors with the new Membership Option!

The pro membership hides all ads, plus gives you double the colors in the color bucket, and more awesome pro features!

[Learn more, Memberships starting at \\$2.50/m!](#)

**Follow me
on Twitter!**

@ConvertingColor